

2.4G WiFi Antenna

Revision History:

Rev. V1.02

1. MODEL: QHY-006

P/N: E12-01542-01

2. Applications

This antenna is designed for 2.4G BLE.

3. Electrical Characteristics

Frequency Band: 2400MHz~2500MHz

Polarization *Gain :

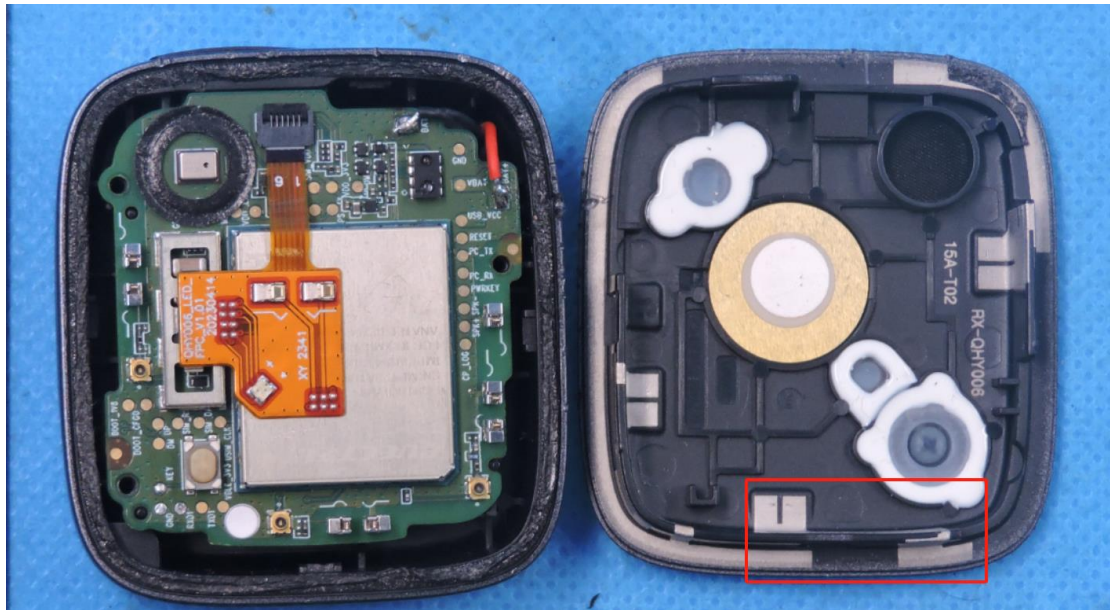
Max peak gain: 0.8 dBi

Impedance: 50Ω

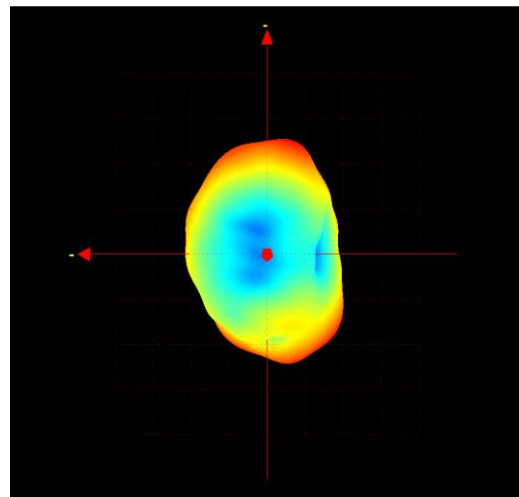
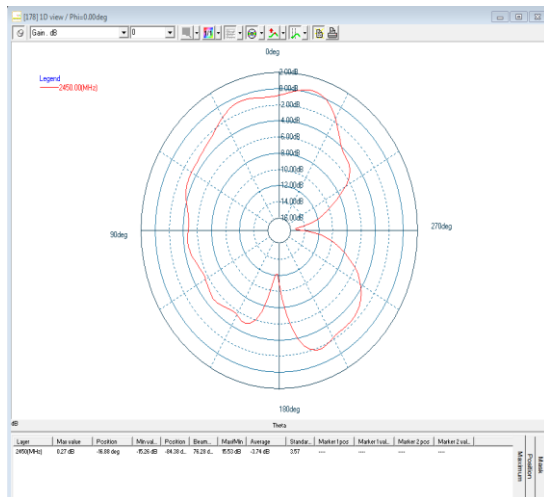
Antenna Type: FPC

Prepared	Checked	Approved
liang	wangyuhua	kenny

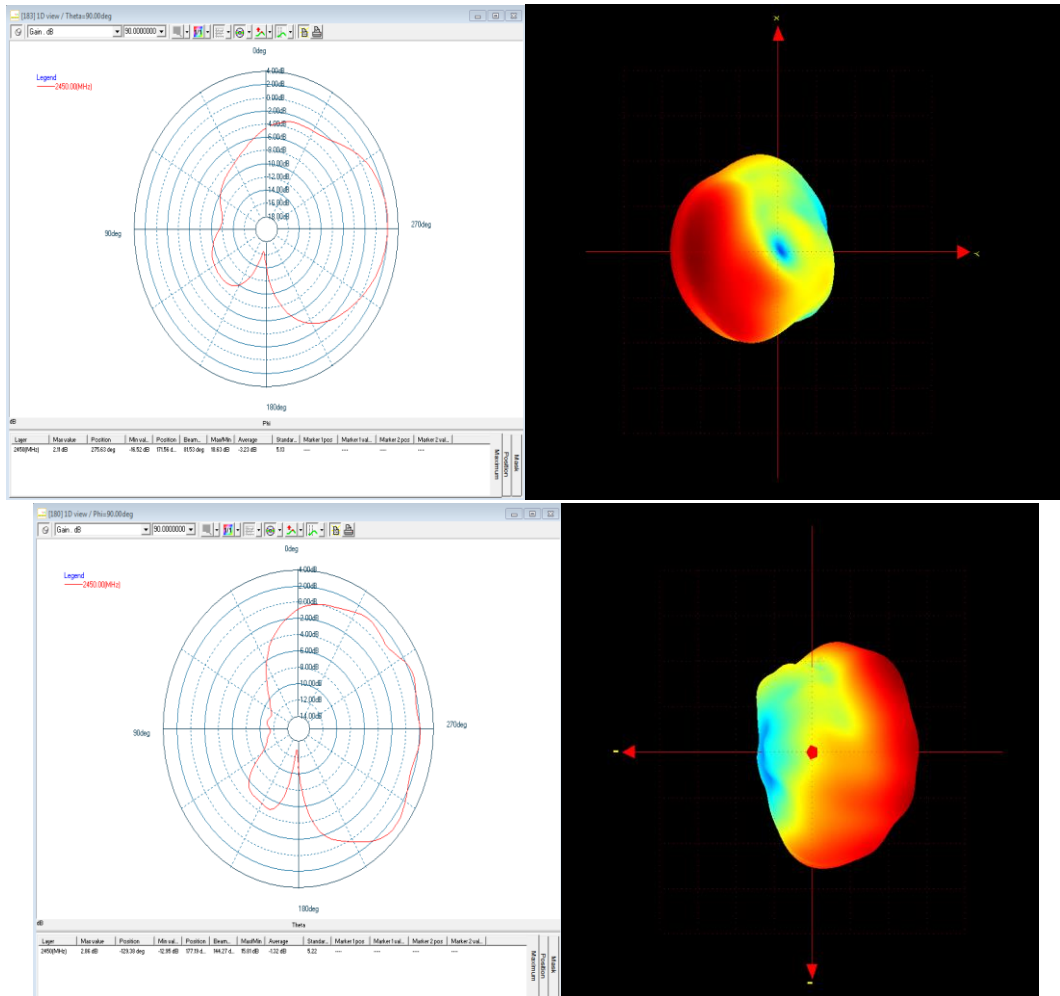
4. Antenna Dimension



5. Typical Free Space Radiation Pattern 3D&2D Radiation Pattern



Prepared	Checked	Approved
liang	wangyuhua	kenny



6. Antenna Gain

Fre (MHz)	Effi (%)	Effi (dB)	Max Gain
2400	40%	-4.0	-0.1
2410	40%	-3.9	-0.1
2420	41%	-3.9	0.0
2430	44%	-3.6	0.5
2440	45%	-3.5	0.8
2450	44%	-3.5	0.7
2460	45%	-3.5	0.7
2470	42%	-3.7	0.3
2480	41%	-3.8	0.1
2490	38%	-4.2	-0.2
2500	39%	-4.1	-0.1

Prepared	Checked	Approved
liang	wangyuhua	kenny