
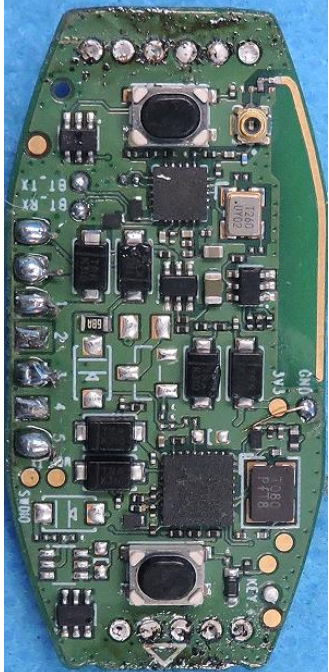


Product Similarity Declaration

Product name: Display Instrument
Model name: B06U, B06C
FCC ID: 2A5B3-B06

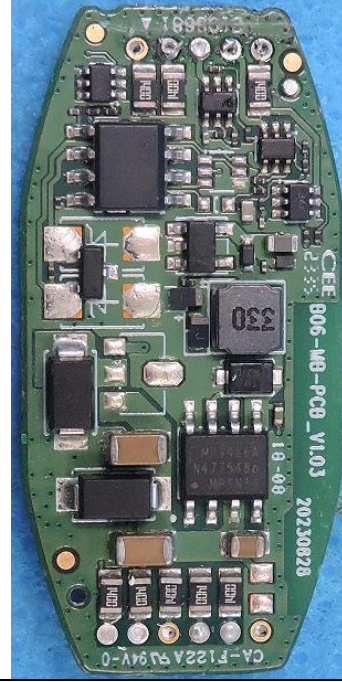
We (**Chongqing Huiye Iot Technology Co., Ltd.**) hereby state that all the models are electrical identical including the same software parameter and hardware design (i.e., circuit design, PCB Layout, RF module/circuit, antenna type(s) and antenna location, etc.), There are differences in the components pasted on different models of PCBs, The functional difference is that B06U communicates with the external controller through the UART interface, while B06C communicates with the external controller through the CAN interface. Choose one of the two.

Demonstrate the detail (descriptions and pictures) as to the difference list above.

Model Name	B06U	B06C
Front PCB	 The image shows the front view of the B06U PCB. It is a green printed circuit board with various electronic components. Key features include a large black integrated circuit (IC) in the center, several smaller ICs, resistors, and capacitors. There are two circular components, likely antennas or sensors, one near the top and one near the bottom. The board has a complex layout of traces and components.	 The image shows the front view of the B06C PCB. It is a green printed circuit board, very similar in layout to the B06U model. It features the same large central IC, smaller ICs, resistors, and capacitors. The two circular components are also present in the same positions. The primary difference from the B06U model is the specific components pasted on the board, particularly the interface-related components.

Chongqing Huiye Iot Technology Co., Ltd.

Back PCB



Signature:

Guo.Lei

Name: Guo Lei

Title: Hardware Test

Place, date: Chongqing, 2023.12.13