

## System Check\_H2450

Frequency: 2450 MHz; Duty Cycle: 1:1; Room Ambient Temperature: 23.0°C; Liquid Temperature: 22.0°C

Medium parameters used (interpolated):  $f = 2450$  MHz;  $\sigma = 1.779$  S/m;  $\epsilon_r = 40.314$ ;  $\rho = 1000$  kg/m<sup>3</sup>

DASY5 Configuration:

- Area Scan Setting: Find Secondary Maximum Within: 2.0 dB and with a peak SAR value greater than 0.0012W/kg
- Electronics: DAE3 Sn528; Calibrated: 2024/4/24
- Probe: EX3DV4 - SN7346; ConvF(7.87, 7.17, 7.26) @ 2450 MHz; Calibrated: 2024/4/24
- Sensor-Surface: 1.4mm (Mechanical Surface Detection)
- Phantom: ELI V5.0 (20deg probe tilt); Type: QD OVA 002 AA; Serial: 1240

### System Performance Check at Frequencies above 1 GHz/Pin=250mW/Area Scan (9x9x1):

Measurement grid: dx=12mm, dy=12mm

Maximum value of SAR (measured) = 20.0 W/kg

### System Performance Check at Frequencies above 1 GHz/Pin=250mW/Zoom Scan (7x7x7)/Cube 0:

Measurement grid: dx=5mm, dy=5mm, dz=5mm

Reference Value = 113.3 V/m; Power Drift = -0.12 dB

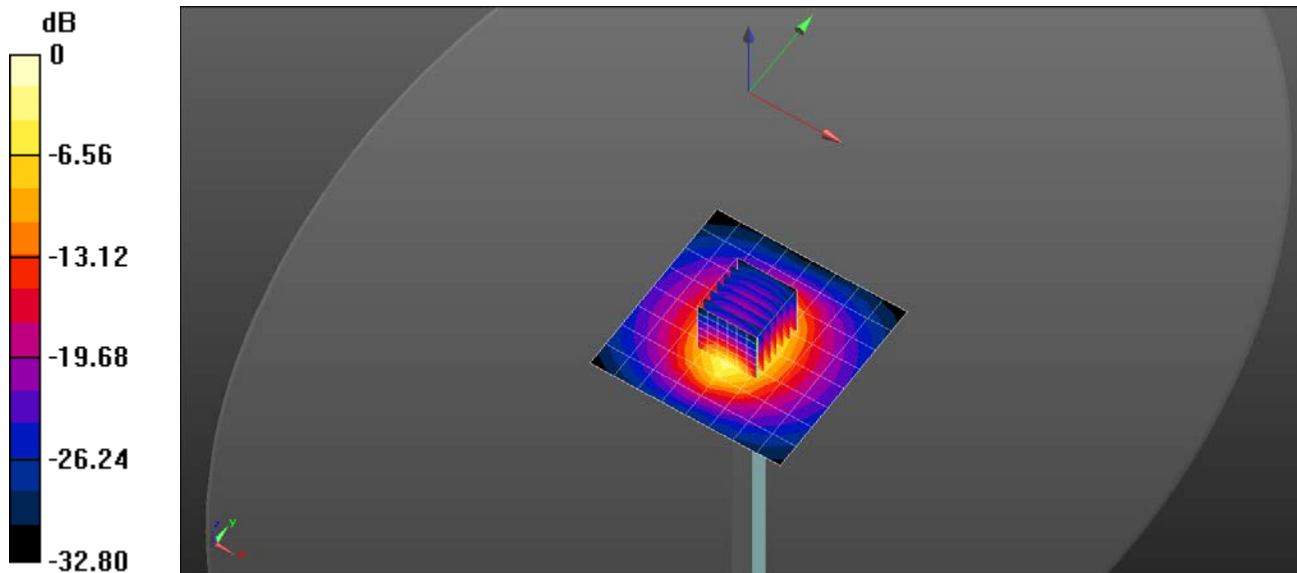
Peak SAR (extrapolated) = 24.3 W/kg

**SAR(1 g) = 12.3 W/kg; SAR(10 g) = 5.78 W/kg**

Smallest distance from peaks to all points 3 dB below = 9 mm

Ratio of SAR at M2 to SAR at M1 = 51.5%

Maximum value of SAR (measured) = 20.1 W/kg



0 dB = 20.0 W/kg = 13.00 dBW/kg