

EDIKUN Foot Switch FS2 Series Quick Start Guide for Windows

A. Introduction

(1) The FS2 series of EDIKUN foot switch that is developed, manufactured, and marketed by Japan Ergonomics Inc. was developed in Japan. EDIKUN is our former company name, but it will be used as the brand name for our foot switches and other products.

This foot switch can output keyboard keys, mouse clicks and pointer movement, and various combinations of keyboard and mouse outputs. What is output when each pedal is pressed can be set via an application (application software) running on a PC, and the settings are stored in the memory in the foot switch.

The FS2 series includes five types, from type FS2P1 with one pedal to type FS2P5 with five pedals.

(2) Each pedal is factory set to the following outputs. FS2P1 has the left mouse click. FS2P2 has the Enter key on the left pedal and the left mouse click on the right pedal. FS2P3 has the Enter key on the left pedal, the left mouse click on the center pedal and the right mouse click on the right pedal. FS2P4 has, from left to right, left arrow key, Enter key, left mouse click, and right mouse click. FS2P5 has, from left to right, left arrow key, Enter key, left mouse click, right mouse click, and right arrow key.

If you do not need to change these output contents, the following steps are not necessary. Connect the foot switch to an appropriate USB port on your computer. After a short time, the PC will recognize it and you can start using it.

Note that the standard driver (HID) in the PC is used, so there is no need to install a new driver.

(3) Settings (programming) for each pedal can be done on Windows or Mac computers. There are two types of settings: standard settings and advanced settings; an application for Windows (application software) allows both standard and advanced settings.

The Mac app can be used up to standard settings, so a foot switch set in the Windows app can be used on the Mac. Also, foot switches set in the Mac app can be used in Windows.

(4) This guide explains up to standard settings. For advanced settings, please refer to the instruction manual below.

<https://www.--->

(5) This FS2 series foot switch is RoHS compliant.

B. Download and Run the Application

(1) The process of changing the settings on a Windows PC from the factory defaults is done using an application for Windows. Please download the compressed zip file of the application from the following link:

<https://www.--->

Unzip the zip file to obtain the FootSwitch2.exe application for Windows. Copy FootSwitch2.exe to the top of your computer desktop or to an appropriate folder.

(2) Execute FootSwitch2.exe by double-clicking the icon or by using "Run" to display the main window shown at right.

Note that this document is explained using Windows 10 screens. Depending on other versions of Windows, the service pack number applied, or the environment, different screens may appear or the order of settings may differ.

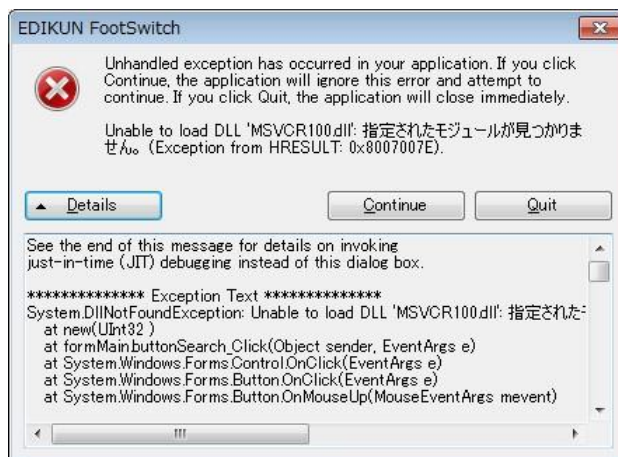
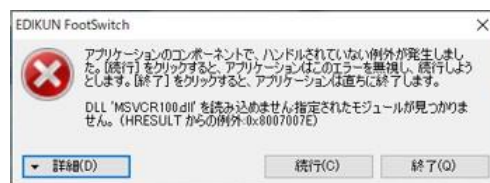
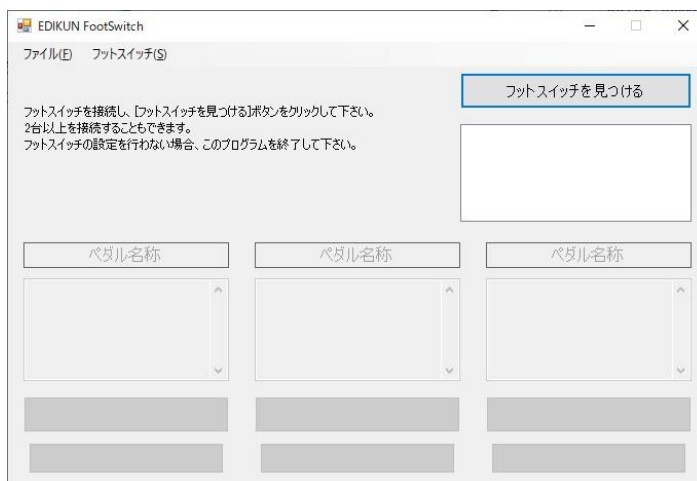
Also, you do not need to install this application.

(3) If you see a message like the one on the right or below right, you need to install the .NET Framework in your computer. Here are two examples.

.NET Framework can usually be installed via Windows Update. For Windows Update, in Windows 10, go to Start button → Settings → Update and Security → Windows Update.

If you were unable to install the .NET Framework from Windows Update, please refer to the following web page, for example, to install the .NET Framework suitable for your Windows.

<https://--->



C. Main Window

(1) If you have not yet connected the foot switch, do so here. Please wait a moment until the PC recognizes it.

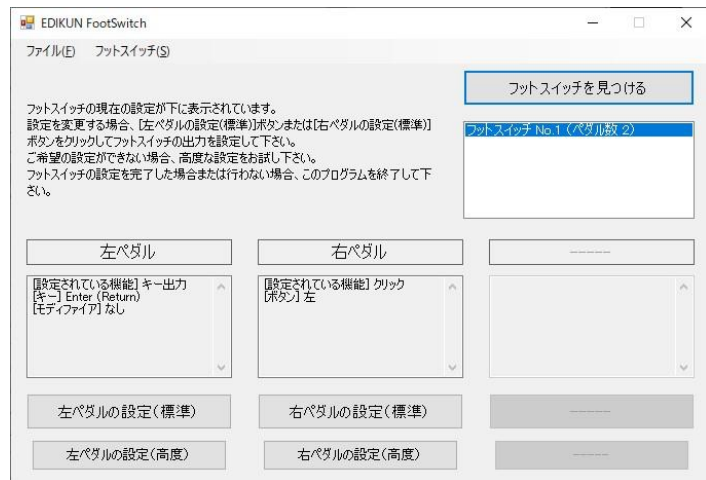
(2) In the window shown above, click on the "Find Foot Switch" button. The window will change as shown to the right. This is an example of type FS2P2 with two pedals. In the middle of the window, you will see what is set for each pedal in the foot switch.

Please use "FootSwitch2.exe" to

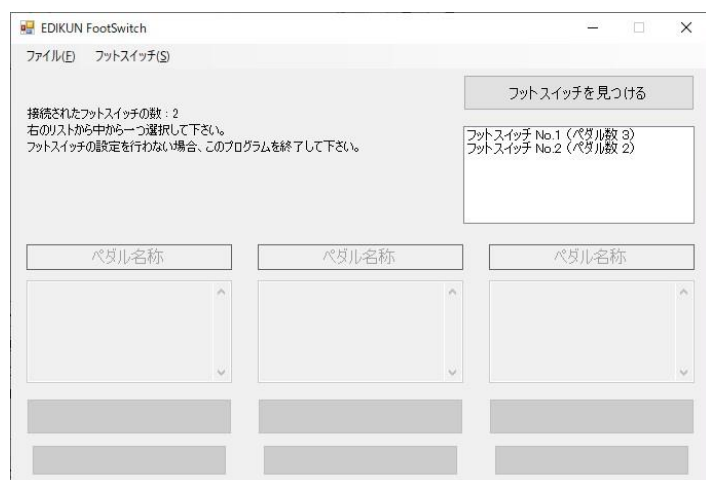
configure FS2 series. The

configuration application software for the former FS1 series cannot be used.

The window expands horizontally when a foot switch with four or more pedals is connected.



(3) If you have more than one foot switch connected, the window shown to the right will appear. In the list box at the top right of the window, the foot switches connected to your computer are lined up, so select one of them.



Selecting one of the foot switches in the list box will result in the window shown to the right.

When a pedal with a selected foot switch is pressed, the area corresponding to that pedal turns red, as shown below. Pressing a pedal with an unselected foot switch will not turn red. This feature makes it clear which pedal of which foot switch you are trying to set. This is especially useful if you have many foot switches connected.

Even when only one foot switch is connected, pressing a certain pedal will cause the area corresponding to that pedal to turn red. The corresponding area on the main window will turn red even if the standard settings window described below or advanced settings window (see the operation manual) is open.

Please note that when you press the

pedal, the keyboard and mouse signals set for that pedal will be output toward the computer. If you press the pedal to make the corresponding area on the main window turn red, it is safe to open a new text file in a notepad application or similar so that the signal from the foot switch goes to the notepad application.

If a non-standard signal is set, the corresponding area may not turn red.

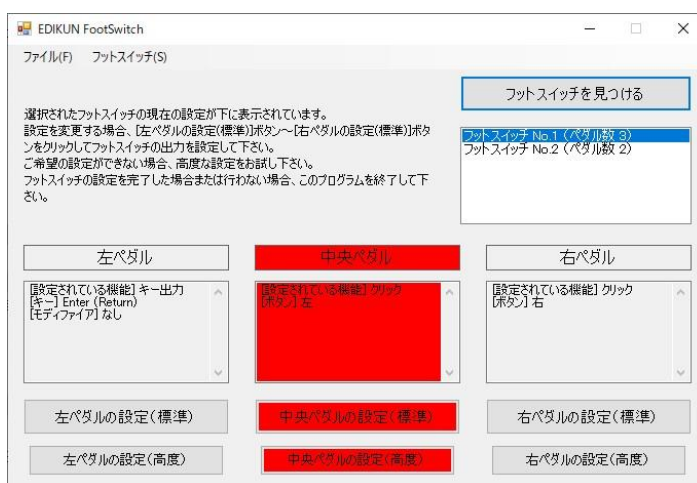
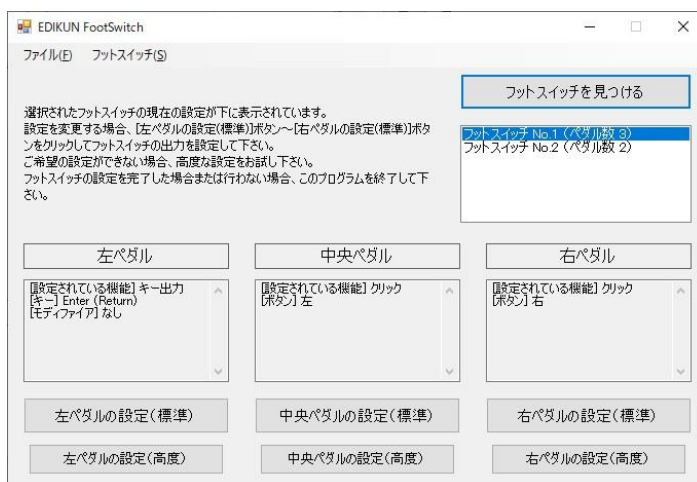
In addition, up to 127 foot switches can be connected (when no other USB devices are present).

(4) You can make various settings (programming) to the foot switch pedals in the manner described below. To restore these settings, select "Restore Factory Settings" from the "Foot Switch" menu.

When the message on the right appears, click "OK" to restore the foot switch settings to the factory defaults.

The factory default state is as described in "A. Introduction (2)".

(5) The functions set for a pedal can be saved to a text file.



As shown at right, select "Save Settings to File" from the "Foot Switch" menu, then select which pedal settings you wish to save. A file save dialog will open, so save the settings file in the folder of your choice. The file name is the name of the pedal beforehand.

You may rename the file. The file extension "edk" and the contents of the file may not be changed.

(6) Settings can also be read from a text file.

As shown at right, after selecting "Read Settings from File" from the "Foot Switch" menu, select which pedal the settings will be written to. Select the configuration file from the dialog that opens. You will need to save the configuration file yourself or get it from another user.

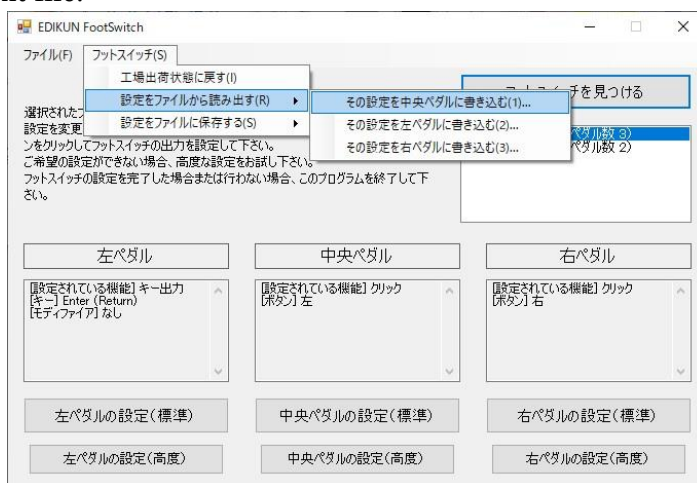
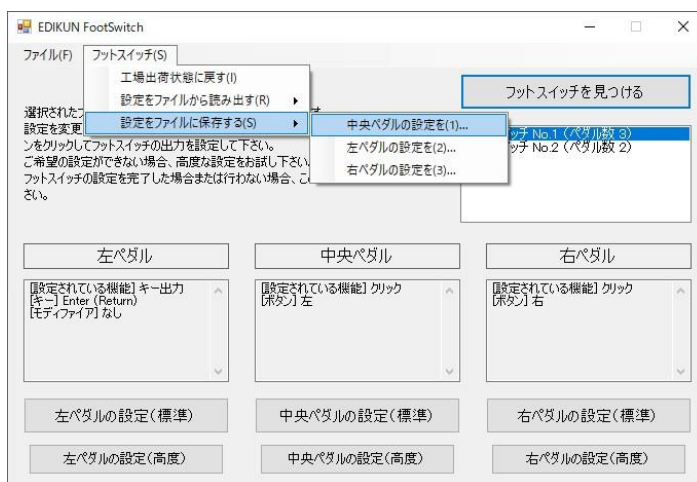
(7) A "function experience mode" is available for those

who are considering purchasing the FS2 series foot switches.

Select "Experience the function without connection" from the "Foot Switch" menu, as shown on the right.

On the left side of the upper half of the window, red text indicates that you are in the function experience mode. If you click on the "Foot Switch" menu again, you will see that you are in the function experience mode, as shown on the right, with the "Try function without connection" checked.

The function experience mode allows the user to experience standard and advanced settings by being able to click on the standard and advanced setting buttons without the foot switch connected. You can also use the functions to restore factory settings, save settings to a text file, and read settings from a text file.



Note that if you enter the experience mode with a foot switch connected, the settings will not be written to that foot switch.

To exit from the functional experience mode, click on the checked "Try function without connection". You will then exit from the functional experience mode and the "Try function without connection" check will disappear.

(8) Clicking on the "Help" menu brings you to a state where you can select from three menu items, "Quick Start Guide," "User's Manual," and "About" as shown on the right. When these are selected, the URL (Internet address) of the download source will be displayed for the first two, and the version of the Windows application will be displayed for "About".

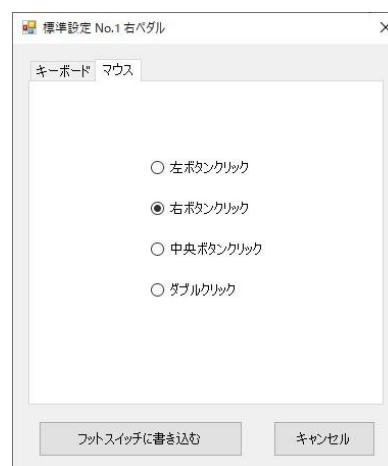


(9) To close the main window and exit this application, select "Exit" from the "File" menu or click the close button ([X] button) in the upper right corner of the window.

D. Standard Setting

(1) In the main window, for example, clicking the "Right Pedal Settings (Standard)" button will display the Standard Settings window shown at right.

The first content displayed in this window is what is stored in the memory of the foot switch. For example, if the window is displayed as shown on the right, the content "Output mouse click, content of click is right button" is stored in the memory. Note that the "No. 1" shown in the window title (top part) is a number to distinguish between two or more foot switches when they are connected. If only one foot switch is connected, this number is not displayed.



(2) After making a selection in the standard settings window, click the "Write to Foot Switch" button to write the selection to the foot switch's memory. Since the settings are written to the foot switch side, not to the PC side, the set functions can be used on another PC (including Mac). When writing to the memory is successfully completed, the message shown on the right will be displayed, telling you that the setting has been successfully completed. For



models FS2P2 to FS2P5 with multiple pedals, the message also indicates which pedal is being set.

After reviewing the message, click the "OK" button. You will be returned to the main window. If you do not need to set any other pedals, close the main window and exit this application.

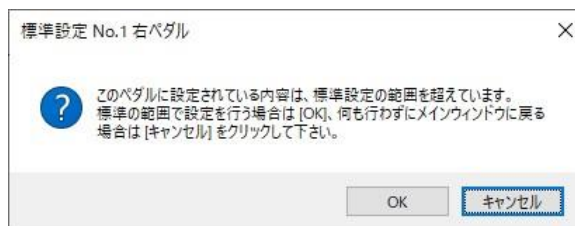
(3) Clicking the "Cancel" button in the standard settings window closes the standard settings window and returns to the main window. In this case, no settings are made to the foot switch and the contents of the foot switch memory remain unchanged. If the close button ([X] button) in the upper right corner of the standard setting window is clicked, it is the same as the [Cancel] button.

(4) In the standard settings, you can configure the keys on the keyboard and the mouse clicks. These can be selected by clicking on the "Keyboard" and "Mouse" tabs.

On the keyboard, you can set the standard keys used in Japanese Windows. Modifiers (Ctrl, Shift, Alt, and Windows keys) can also be added.

The mouse can be set to click the left, right, and middle buttons (middle button), as well as double-click the left button.

(5) Note that if you click the Standard Setting button when the corresponding pedal is set to a value that can only be set in the Advanced Setting (refer to the instruction manual), the message shown on the right will appear. To rewrite the memory of the corresponding pedal to that of the standard range, click the [OK] button. To return to the main window without doing anything, click the [Cancel] button. Even if you click the "OK" button here, the memory in the foot switch will not be changed until you click the "Write to Foot Switch" button.



D-1. Keyboard Key Settings

(1) [After clicking on the "Keyboard" tab, the Standard Settings window will look like the one shown to the right, for example. When you select a key in the list box at the top of the window, its description will appear in the "Description" column. Some keys do not display a description.

The "Keyboard" key settings in the standard settings probably cover most of the keys normally used in Japanese Windows, but if you want to use other keys, please set the "Key Output Settings" in the advanced settings (see "E-1 Key Output Settings" in the User's Manual).



In the example on the right, the radio button [Ctrl, Shift, Alt, without WindowsKey] is selected, so the four checkboxes [Ctrl], [Shift], [Alt], and [Windows Key] are light in color and cannot be selected.

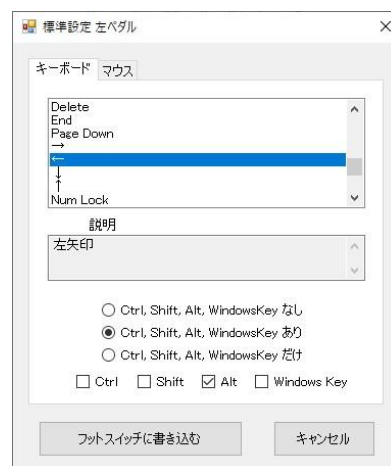
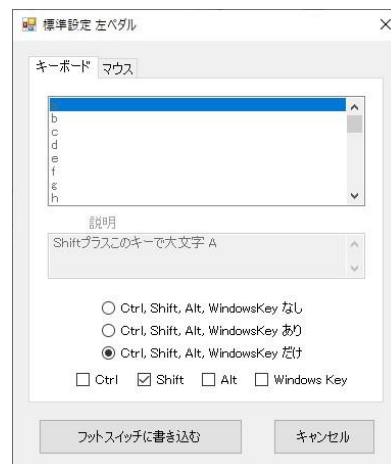
(2) If the radio button [Ctrl, Shift, Alt, WindowsKey Yes] is selected, the Standard Settings window will look like the one shown on the right. In this example, none of the four checkboxes [Ctrl], [Shift], [Alt], and [Windows Key] are checked, so the [Write to Foot Switch] button is light in color. If all necessary selections have not been made, as in this example, the "Write to Foot Switch" button is dimmed in color and cannot be clicked.

For example, you can set Shift + a for capital A, Ctrl + c for copy, and Ctrl + v for paste.

(3) If the radio button [Ctrl, Shift, Alt, WindowsKey only] is selected, the Standard Settings window will look like the one shown to the right. In this figure, an additional checkbox [Shift] is selected. Since there is no key output from the foot switch, the key list box at the top of the window is lightcolored and not selectable.

In this case, you can create a state where only the Ctrl key is pressed, the Shift key is pressed, or the Ctrl and Alt keys are pressed, etc. For example, if you output the Shift key from the foot switch and press the [A] key on the keyboard, you will get a capital A.

(4) Note that the Mac will not recognize the combined input from the two USB devices. In the above example, the Mac output will be a lowercase a. To output an uppercase A on the Mac, select [Ctrl, Shift, Alt, WindowsKey Yes] and choose Shift + a. (5) The "browser back button," which is often provided on the mouse, is Alt key + left-pointing arrow, and can be output by setting it as shown on the right. The "forward button of the browser" is Alt key + right-pointing arrow, and can be output in the same way.



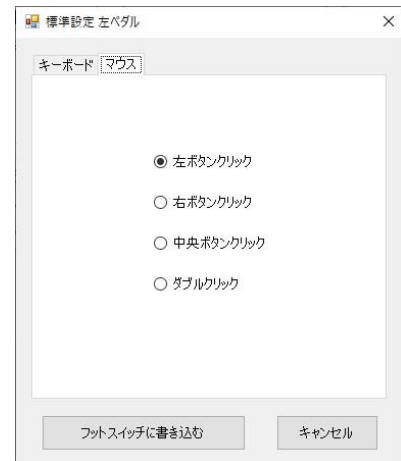
(6) When the [Write to Foot Switch] button is clicked, the message on the right appears, telling you that the settings have been made successfully. For models FS2P2 to FS2P5 with multiple pedals, the message also indicates which pedal is the setting.



D-2. Mouse Click Settings

(1) When the [Mouse] tab is clicked, the standard settings window will look as shown to the right. Depending on the selected radio button, the output will be left button click, right button click, center button (middle button) click, or double left button click.

(2) When the [Write to Foot Switch] button is clicked, a message appears in the upper right corner, as in "D-1 Keyboard Key Settings (6)," telling you that the settings have been made successfully.



This guide explains everything up to the standard configuration of the application for Windows.

The data for this guide can be downloaded from

https://www.edikun.co.jp/edikun-footswitch/qsg_windows_3-4.pdf

For advanced settings, please refer to the instruction manual below.

https://www.edikun.co.jp/edikun-footswitch/manual_windows_3-4.pdf

FCC Warning

This device complies with part 15 of the FCC rules. Operation is subject to the following two conditions: (1) this device may not cause harmful interference, and (2) this device must accept any interference received, including interference that may cause undesired operation.

Changes or modifications not expressly approved by the party responsible for compliance could void the user's authority to operate the equipment.

NOTE: This equipment has been tested and found to comply with the limits for a Class B digital device, pursuant to part 15 of the FCC Rules. These limits are designed to provide reasonable protection against harmful interference in a residential installation. This equipment generates uses and can radiate radio frequency energy and, if not installed and used in accordance with the instructions, may cause harmful interference to radio communications. However, there is no guarantee that interference will not occur in a particular installation. If this equipment does cause harmful interference to radio or television reception, which can be determined by turning the equipment off and on, the user is encouraged to try to correct the interference by one or more of the following measures:

- Reorient or relocate the receiving antenna.
- Increase the separation between the equipment and receiver.
- Connect the equipment into an outlet on a circuit different from that to which the receiver is connected.
- Consult the dealer or an experienced radio/TV technician for help.