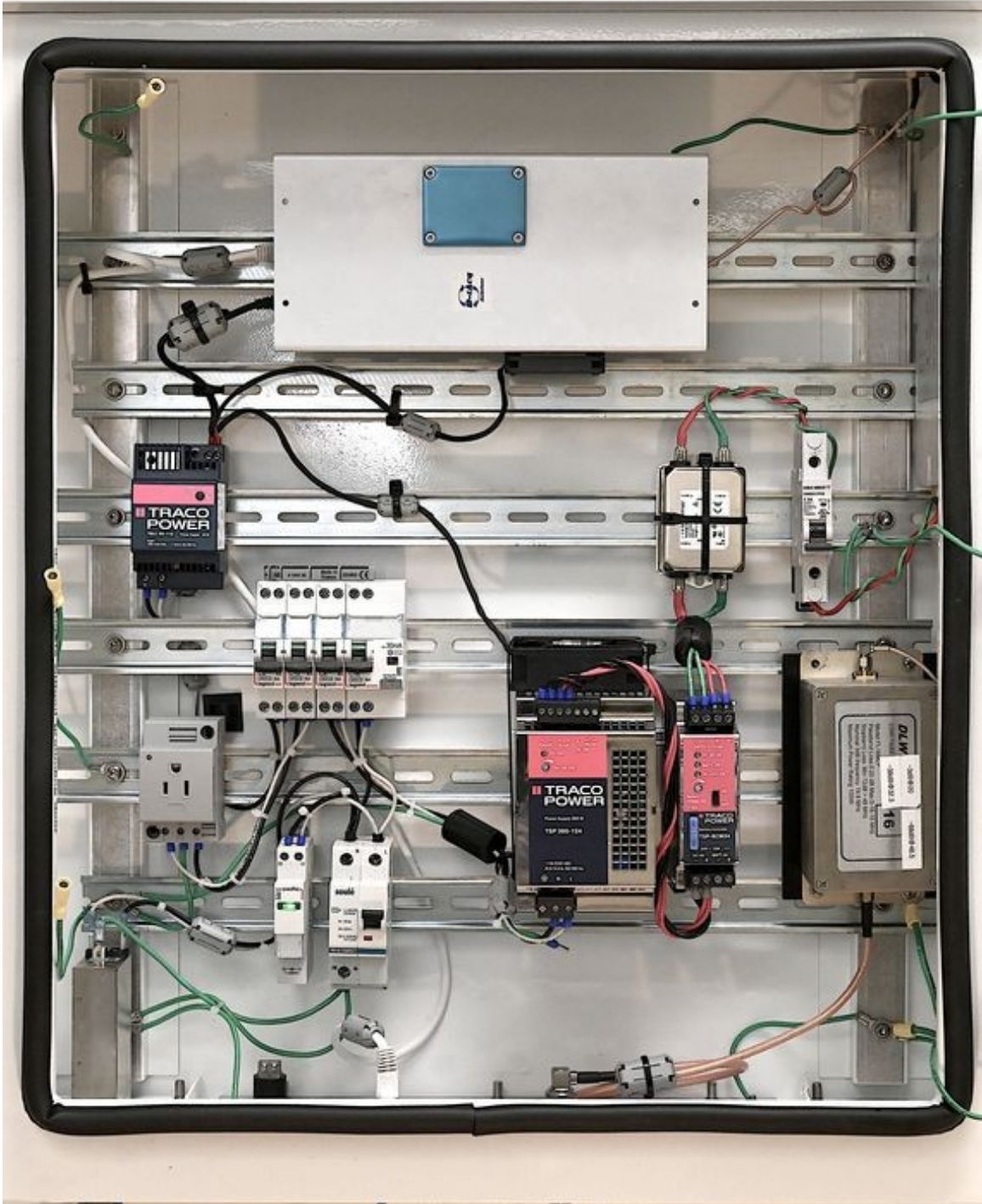


Internal photos of Synthesizer-Transmitter Unit, model MK3-PW-PA-TX.



*Figure 1. Synthesizer-Transmitter Unit, door open.
Bottom rails: power supplies with circuit breakers.
Upper rail: digital synthesizer and controller processor with blue thermal bell.*

On the right wall: the power amplifier module and the low-pass filter.



Figure 2. Synthesizer-Transmitter Unit, door open, slanted view. The power amplifier module (top) and the low-pass filter (bottom) are seen on the right inner wall.



Figure 3. Upper rail enlarged from Figure 1 and 2, after removal of the aluminum lid and thermal bell, showing the Triple DDS Radar Controller board.

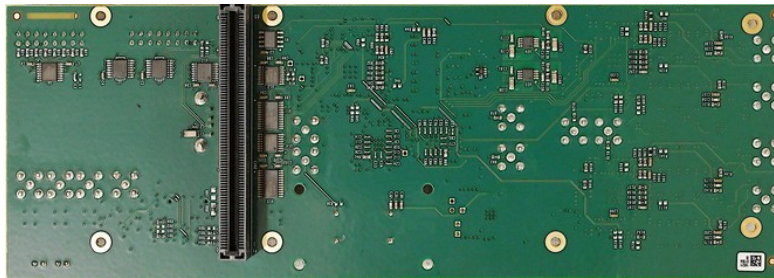


Figure 4. Bottom face of the Triple DDS Radar Controller board.

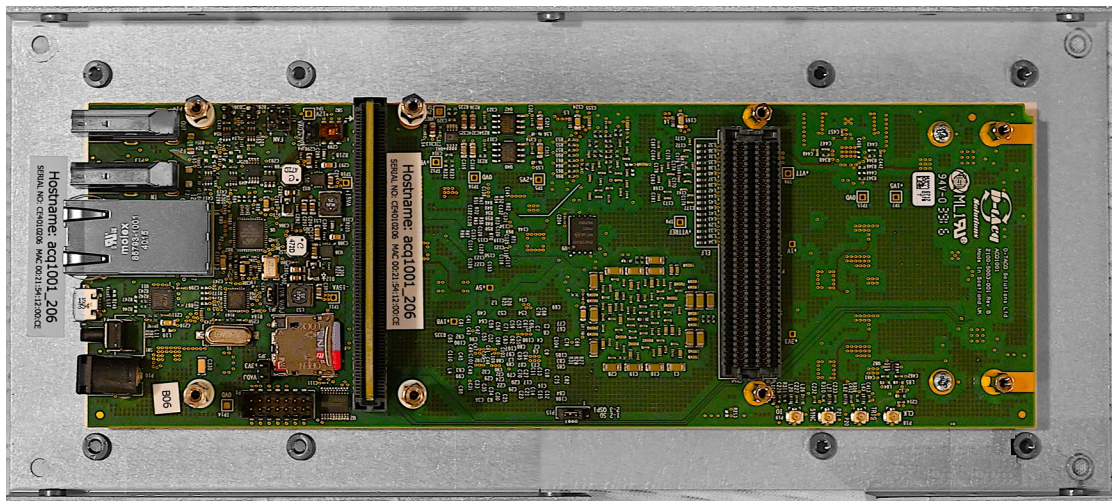


Figure 5. Carrier board with FPGA, after removal of the Triple DDS Radar Controller board (top face; bottom face not accessible).