

# Antenna Specification

Manufacture: Shenzhen TFIRETEK Technology Co, Ltd.

Product Name: FPC Antenna

Model Number: X7B-Ant

Frequency Range (MHz) : 2400-2500 MHz; 5100-5850 MHz

Gain (dBi) : 2400-2500: 2.0dBi; 5100-5850: 2.2 dBi

VSWR:  $\leq 2$

Input Impedance ( $\Omega$ ) : 50

Input connector type: 1代IPEX

Tested by: *Peggy Biao*

Approved by: *Peggy Fahu*

# 测试设备 Test equipment and environment

## 测试设备



SATIMO-24



ETS



模拟人头手



安捷伦8960



安利MT8820C



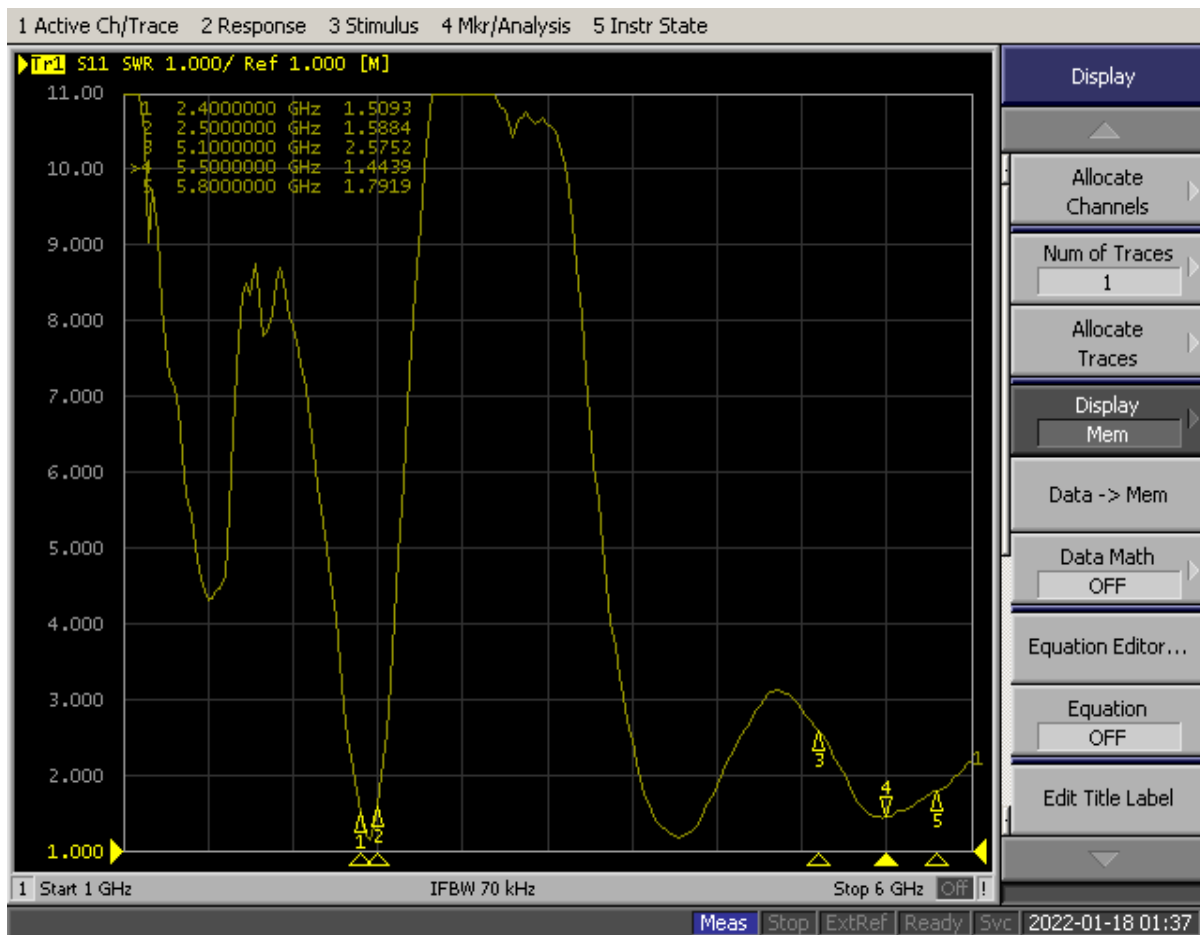
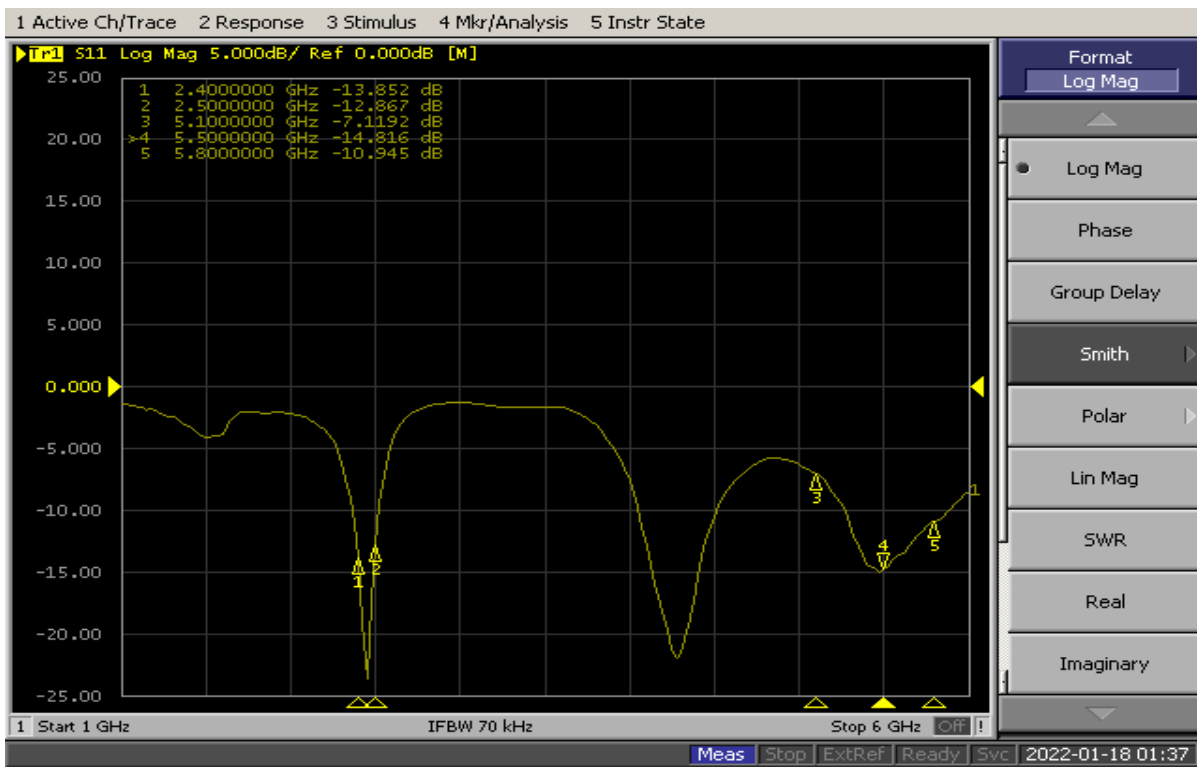
CMW500



安捷伦E5071C

测试系统	测试环境	有源测试	无源测试
SATIMO—24	温度：22°C ± 3°C	支持2G/3G/4G	400MHZ——6G
ETS	湿度：50% ± 15%	BT/WIFI/GPS	

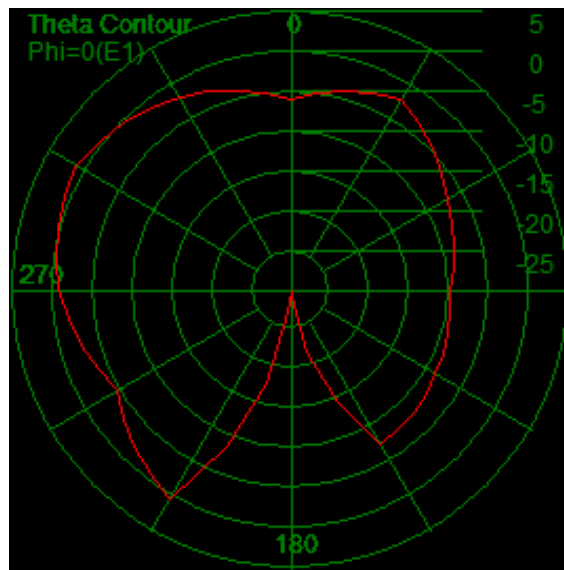
# 天线回损与驻波 Antenna Return Loss (RL) and SWR



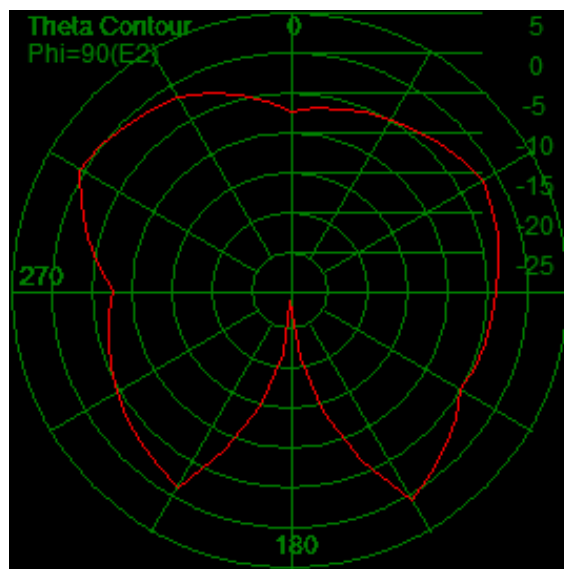
天线无源数据 Antenna passive test data

Test Point ID	Freq. (MHz)	Gain (dBi)	Efficiency (%)
1	2400.0	1.8	48.3%
2	2450.0	2.0	48.8%
3	2500.0	1.9	46.1%
4	5100.0	1.7	47.3%
5	5200.0	1.9	48.1%
6	5300.0	1.9	49.6%
7	5400.0	2.2	52.1%
8	5500.0	2.1	52.0%
9	5600.0	2.2	52.3%
10	5700.0	1.9	50.9%
11	5850.0	1.8	50.0%

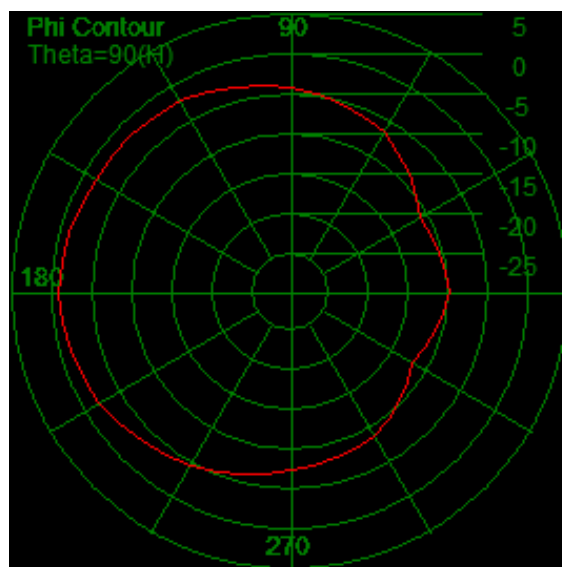
**Frequency: 2400MHz**



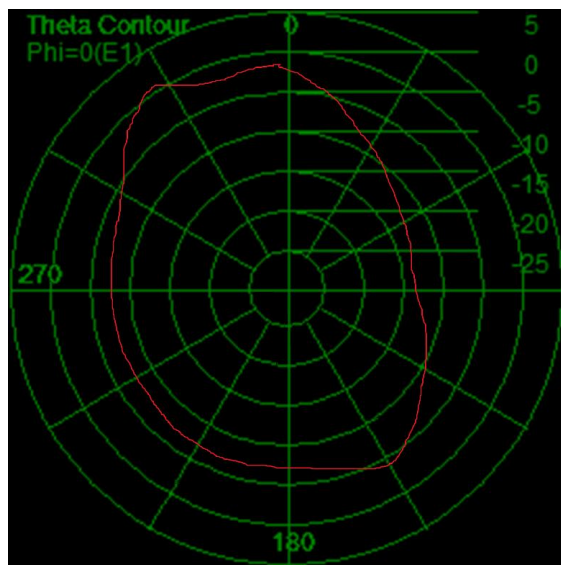
**Frequency: 2450MHz**



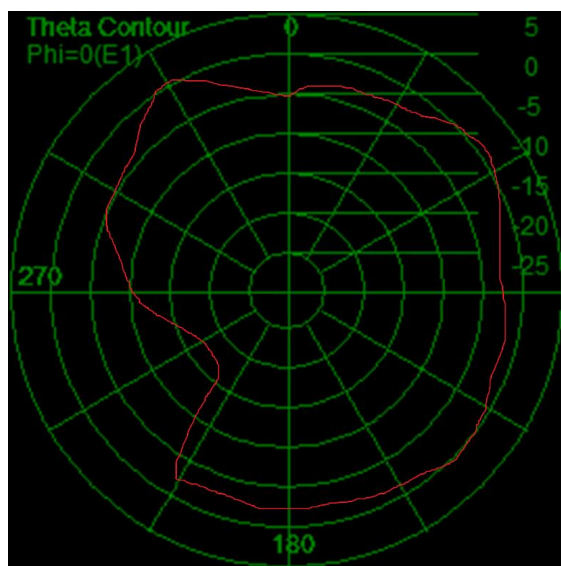
**Frequency: 2500MHz**



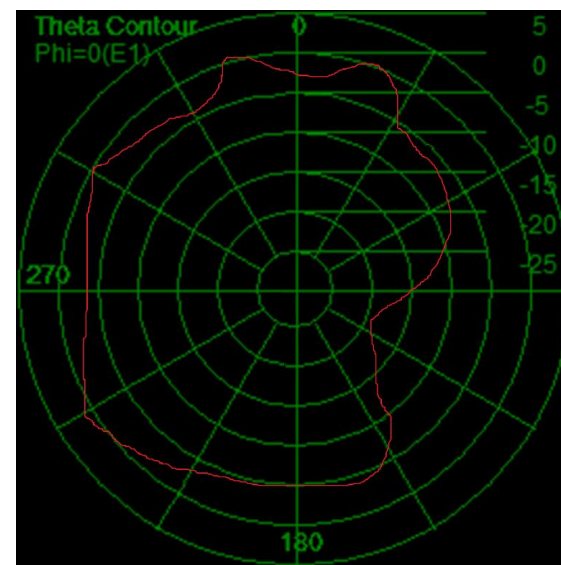
**Frequency: 5100MHz**



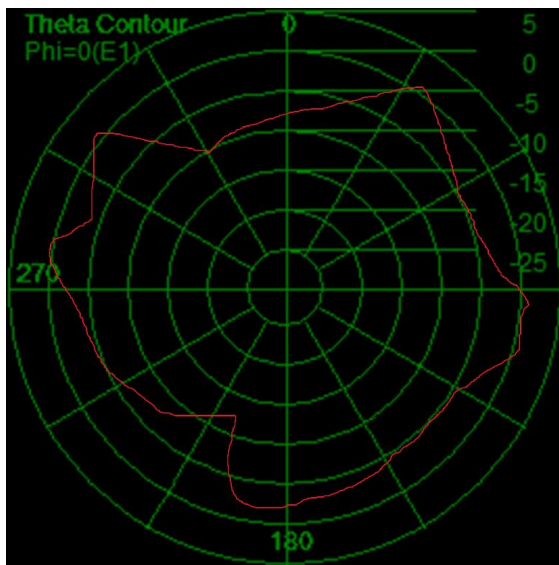
**Frequency: 5200MHz**



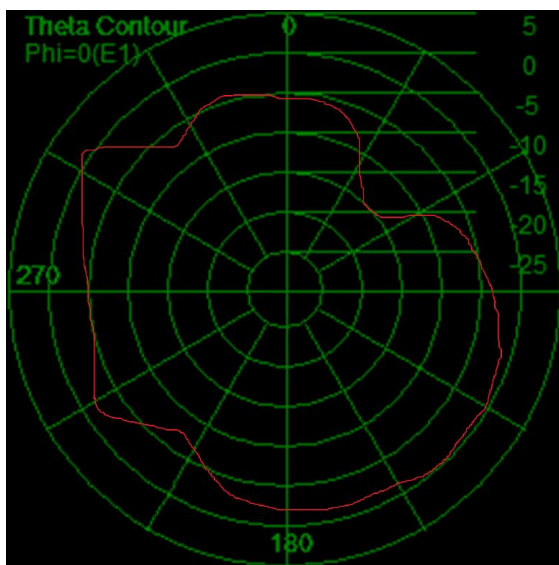
**Frequency: 5300MHz**



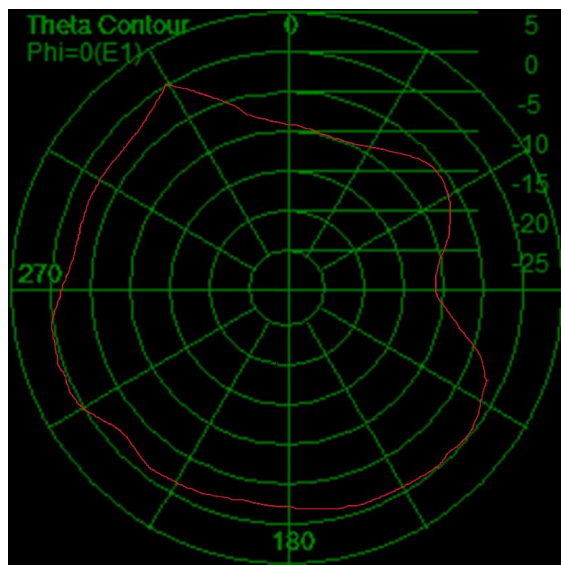
**Frequency: 5600MHz**



**Frequency: 5700MHz**



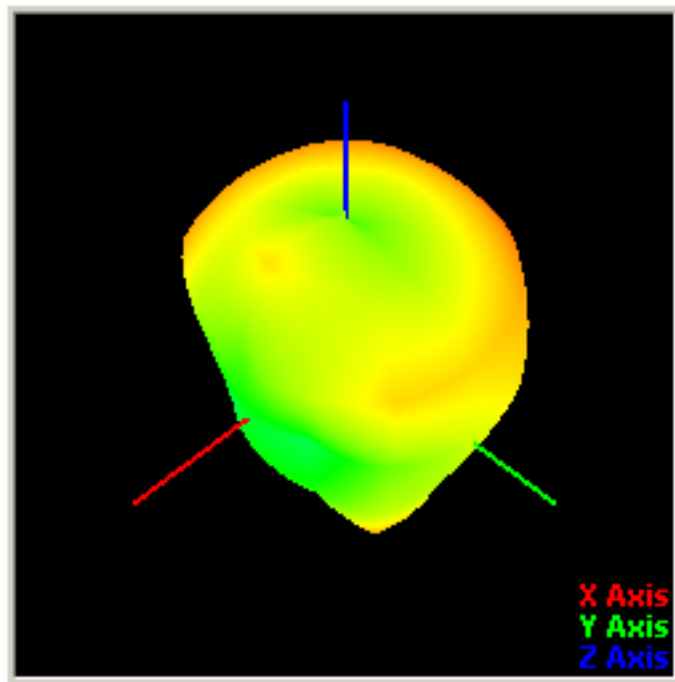
**Frequency: 5850MHz**



## OTA测试 OTA TEST

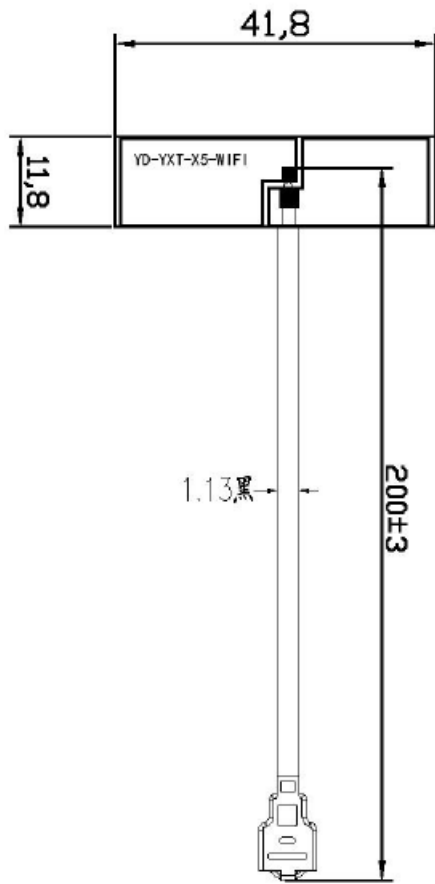
CHN	1	6	11	36	149	165
TRP	14.4	14.7	14.5	13.1	13.3	13.5
TIS	-75.3	-75.8	-75.6	-70.1	-70.2	-70.3

## 天线方向图 Antenna Pattern





# Antenna Dimensions



IPEX → 代