



1. Graphic for reference



Figure 2 0.8*20mmBT

Name	ANTENNA
Model	LT13
Frequency	2.4Ghz
Input impedance	50Ω
Allowed power	5mW
Working temp.	-25 ~ +65 °C
Storage temp.	-40 ~ +85 °C
Weight	0.25g
Antenna gain	2dBi

2. OTA(Free Space)

Channel	TRP (dBm)	TIS (dBm)
0	6.3	-91.1
39	6.5	-91.3
78	6.6	-91.2



3. BT Test

Test term	Environment	Max pairing distance	BT Call distance	
BT	Office	16-18m	10-12m	



4. Blueprint

注:

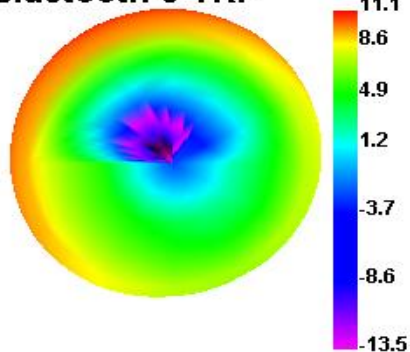
规格: 直径0.80*长度20.0mm

芯线需上锡

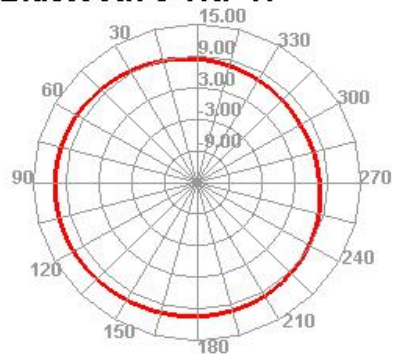
第三角法		机种	日期	页码	1 of 1
φ~10	±0.10	品名	设计	审核	
10~20	±0.12	料号	审核	工程	long
20~40	±0.15	材质	确认	制膜	
40~	±0.20	表面处理	单位	比例	1:1
特殊规格/位置	0.02	表面处理	比例	1:1	版本
		表面处理	比例	1:1	图号

5.Field

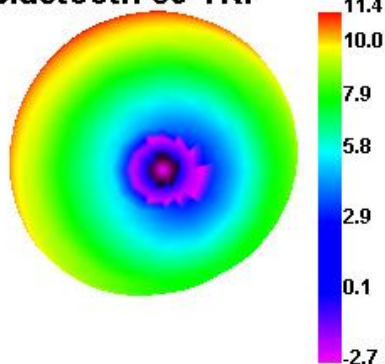
Bluetooth 0 TRP



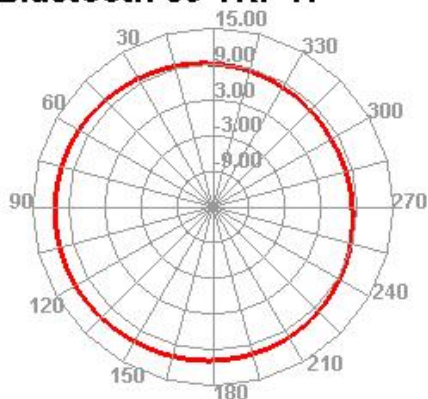
Bluetooth 0 TRP H



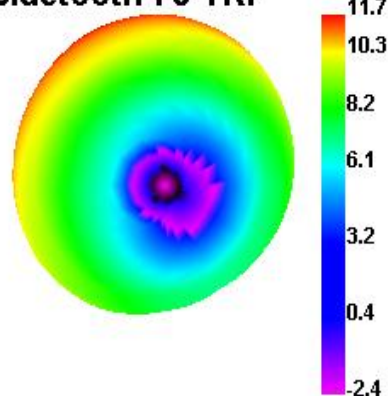
Bluetooth 39 TRP



Bluetooth 39 TRP H



Bluetooth 78 TRP



Bluetooth 78 TRP H

