
FS2016BT1_D Product Description

Product picture



Function description

FS2016BT1_D is a button bluetooth foot switch, keys can be customized to keyboard, mouse and other functions, can be connected through Bluetooth or USB cable connection. Users can define keys for keyboard function, mouse function, string printing function, multimedia function and macro definition function through the supporting software.

1. Keyboard function: can be set to any key value or combination key (including F 13 to F 24 etc.), such as key value A or CTRL+A function.
2. Mouse function: can be set to left, middle, right of mouse button or scrolling wheel either in horizontal or vertical direction.
3. String input: a maximum of 38 characters can be set, such as www.pcsensor.com.
4. Multimedia function: support multimedia function, such as the previous, the next, volume up, volume down and so on.
5. Macro definition function: can define a series of keyboard and mouse action combination, for example, set Ctrl+P delay 100ms after the return to realize automatic printing function.

Product parameters

1. Product Name: A one-key bluetooth foot switch
2. Product model: FS2016BT1_D
3. Bluetooth coverage radius: $\geq 10\text{m}$
4. Bluetooth version: Bluetooth 4.2
5. Power Supply Voltage: AAA(No.7)*2 battery
6. working current : $< 2\text{mA}$
7. Switch service life: More than a million times
8. Connection method : Bluetooth/USB

Bluetooth pairing

The product is compatible with android, Windows8, Windows10, IOS and Mac OS systems. The blinking red and green light indicates that the device is in pairing mode, you can connect the device with your mobile phone or computer.

Blinking red and green: In pairing mode, users can search for the device through bluetooth enabled devices, such as computers and mobile phones, and then pair the device.

Blinking red: In connection back mode, the device is connecting to the device that was paired last time.

Blinking green: Data is normally sent after the pairing succeeds.

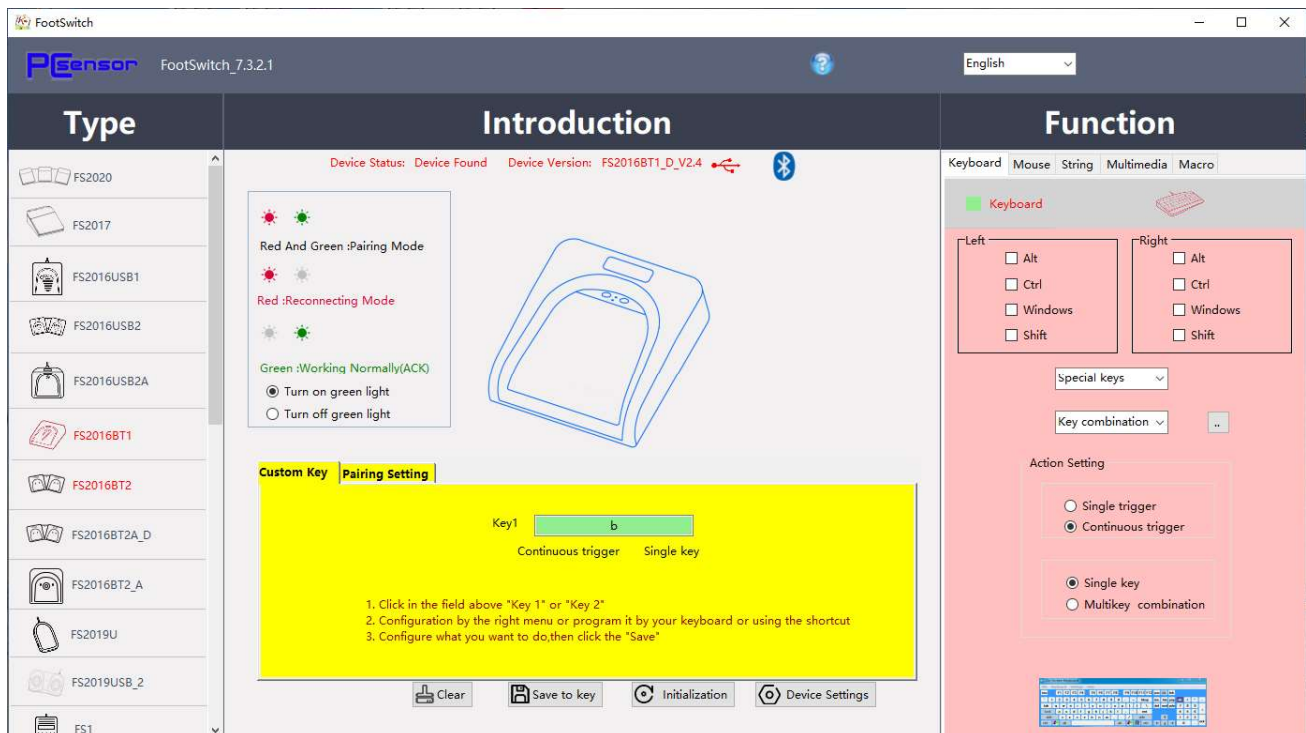
Operating Instructions:





First, press the "connect" key for 2 seconds to make the device enter the pairing mode (the red and green light in pairing mode flash simultaneously), turn on the Bluetooth function of the mobile phone or computer, search the nearby Bluetooth device, find "FS2016BT1_D" and click to connect, when the device is connected, the green light blinks twice to indicate that the connection is successful.

Hold down the ON/OFF button for 2 seconds to power OFF the device. To power ON the device, press the ON/OFF button again.

Software description

Software download address: www.pcsensor.com/software1, Download and install the latest version of FootSwitch software, which only supports Windows system at present. The software interface is as follows:



Clear button  can delete the currently set key value, Save to key button  used to save the current Settings, Initialization button  used to restore the function to factory Settings, Device Settings  used to set low power alarm function, When low power

alarm is turned on, the red light will flash once every three seconds when the equipment power is lower than 10%.

Function set :

1. Connect the device to the USB port of the computer;
2. Run FootSwitch software;
3. Click the Select function window;
4. Select or enter the key value to be set;
5. Click the "Save to key" button to complete the setting.

Modify bluetooth name: You can modify the name of Bluetooth in Pairingsetting. Click "Pairingsetting", enter the character to be added in the input box of device name, and click "Save to key" to complete the modification of Bluetooth name, as shown below:

Set the sleep time: Click "Pairing Setting" to set the sleep time in the input box of sleep time. The sleep time indicates how long the device will enter the sleep state after no action (Pedal no action).

FCC Statement

This equipment has been tested and found to comply with the limits for a Class B digital device, pursuant to part 15 of the FCC rules. These limits are designed to provide reasonable protection against harmful interference in a residential installation. This equipment generates, uses and can radiate radio frequency energy and, if not installed and used in accordance with the instructions, may cause harmful interference to radio communications. However, there is no guarantee that interference will not occur in a particular installation. If this equipment does cause harmful interference to radio or television reception, which can be determined by turning the equipment off and on, the user is encouraged to try to correct the interference by one or more of the following measures:

- Reorient or relocate the receiving antenna.
- Increase the separation between the equipment and receiver.
- Connect the equipment into an outlet on a circuit different from that to which the receiver is connected.
- Consult the dealer or an experienced radio/TV technician for help.

To assure continued compliance, any changes or modifications not expressly approved by the party.

Responsible for compliance could void the user's authority to operate this equipment. (Example- use only shielded interface cables when connecting to computer or peripheral devices).

This equipment complies with Part 15 of the FCC Rules. Operation is subject to the following two conditions:

- (1) This device may not cause harmful interference, and
- (2) This device must accept any interference received, including interference that may cause undesired operation.

RF warning statement:

The device has been evaluated to meet general RF exposure requirement.
The device can be used in portable exposure condition without restriction.