

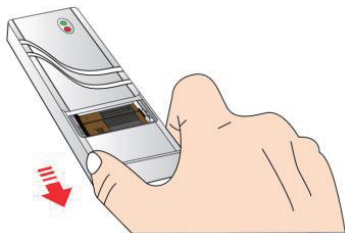
Nexx Wireless Sensor works with Nexx Garage 200 to determine if your garage door is open or closed.

WARNING

Read instructions carefully BEFORE beginning. Please make sure your garage door is closed before you start installation. The Nexx Garage product and our door sensors are meant to be used with garage door openers equipped with photoelectric safety sensors (manufactured after 1993).

BATTERY REPLACEMENT

Pull down the bottom to open the battery compartment. Replace the battery with 12V Alkaline Battery (type 23A).



Video tutorial of the installation process:

getnexx.com/nxg200/videos

For up-to-date information and help with Nexx Wireless Sensor you can visit our website or contact us directly by email:

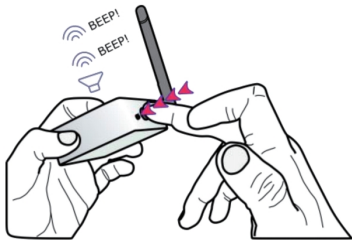
www.getnexx.com/support

support@getnexx.com

1. SENSOR PAIRING

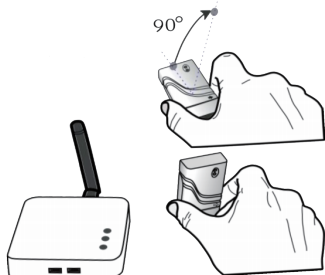
Press the pairing button on the device.

The device will beep 2 times.



2. SENSOR PAIRING

Move the wireless sensor horizontally and vertically. One of the LED lights will turn on for a few seconds.



3. SENSOR PAIRING

✓ PAIRED

When pairing is successful, the device will beep 3 times.



✗ NOT PAIRED

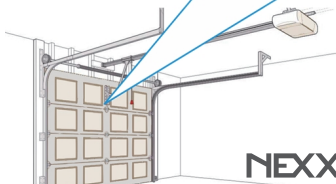
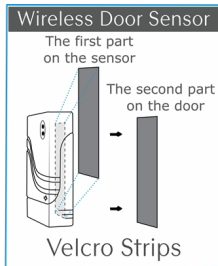
If pairing has failed, the device will beep once for two seconds.

⇒ Retry sensor pairing from step 1.



4. SENSOR INSTALLATION

Attach the sensor using the Velcro provided **to the top middle of your garage door**.



Federal Communications Commission (FCC) Statement. This device complies with part 15 of the FCC Rules. Operation is subject to the following two conditions:

- (1) This device may not cause harmful interference, and
- (2) this device must accept any interference received,

including interference that may cause undesired operation. Note: This equipment has been tested and found to comply with the limits for a Class B digital device, pursuant to part 15 of the FCC Rules. These limits are designed to provide Reasonable protection against harmful interference in a residential installation. This equipment generates, uses and can radiate radio frequency energy and, if not installed and used in accordance with the instructions, may cause harmful interference to radio communications. However, there is no guarantee that interference will not occur in a particular installation. If this equipment does cause harmful interference to radio or television reception, which can be determined by turning the equipment off and on, the user is encouraged to try to correct the interference by one or more of the following measures:

- Reorient or relocate the receiving antenna.
- Increase the separation between the equipment and receiver.
- Connect the equipment into an outlet on a circuit different from that to which the receiver is connected.
- Consult the dealer or an experienced radio/TV technician for help.

Warning: Changes or modifications made to this device not expressly approved by **Ampula Inc** may void the FCC authorization to operate this device. Note: The manufacturer is not responsible for any radio or TV interference caused by unauthorized modifications to this equipment. Such modifications could void the user's authority to operate the equipment.

RF exposure statement:

This device complies with FCC RF radiation exposure limits set forth for an uncontrolled environment. The device is installed and operated without restriction.