

产品承认书

Product acknowledgment

版本编号： _____ V1.3

Version number: _____ V1.3

客户名称： _____

Client Name:

产品型号： _____ G509(P03)

Product Model Number: _____ G509(P03)

产品类型： _____

Product Type: _____

拟定 Protocol	审核 Examine and verify	批准 Approve

客户确认	签名 Sign one`s	日期 Data

Client affirm	name	

目录 Catalogue

- 1、 无线充电器发射端描述 Wireless charger transmitting terminal description
- 2、 发射端电器性能 Transmitting terminal electrical performance
 - 2.1 发射端输入 Transmitting terminal input
 - 2.2 发射端额定输出 Transmitting terminal rated output
 - 2.3 发射端工作指示状态 Launch the Work instructions state
- 3、发射端线圈参数 Transmitting terminal coils parameter
 - 3.1 线圈参数 The parameter of coil
 - 3.2 发射端线圈尺寸 Transmitting terminal coils size
- 4、性能 Performance
 - 4.1 发射端性能 Transmitting terminal performance
- 5、 发射端原理 Transmitting terminal principle
 - 5.1 原理图 Schematic diagram
- 6、PCBA
 - 6.1 发射端 PCB 原件位置正面 Transmitting terminal PCB original location front
 - 6.2 发射端 PCB 背面 Transmitting terminal PCB back
 - 6.3 发射端 PCB 布线图正面 Transmitting terminal PCB wiring diagram front
 - 6.4 发射板尺寸 Launch plate size
- 7、物料清单 BOM
 - 7.1 接收端清单 Receiving end inventory
- 8、气候条件规格 Weather conditions standard
 - 8.1 条件 Condition

1、无线充电器发射端描述 Wireless charger transmitting terminal description

本产品适合手机、家具等产品实现 无线充电功能。以及基于其他 5V2A 的电池无线充电或者无线供电。

This product is suitable for mobile phones, furniture for wireless charging. And based on the other battery of 5V 2A for wireless charging or wireless power supply.

2、发射端电器性能 Transmitting terminal electrical performance

2.1发射端输入 Transmitting terminal input

输入电压范围 Input voltage range	9.6V----40V DC
额定输入电压范围 Range Input voltage range	11V----32V DC
最大输入电流 Maximum incoming current(adapter)	0.5Amax. 在满载条件下 0.5Amax. In the condition of full load

2.2 发射端额定输出 Transmitting terminal rated output

额定输出电压范围 Range Output voltage range	5V----9V DC
最大输出电流 Maximum current Output	1.1Amax. 在满载条件下 1.1Amax. In the condition of full load

2.3 发射端工作指示状态 Launch the Work instructions state

指示灯 Indicator light	空闲状态 Idle state	充电状态 Charging State	保护状态 Protection State
绿色 Green	常亮 Open	熄灭 Close	熄灭 Close
红色 Red	熄灭 Close	常亮 Open	闪烁 Glitter

3、发射端线圈参数 Transmitting terminal Coil's parameter

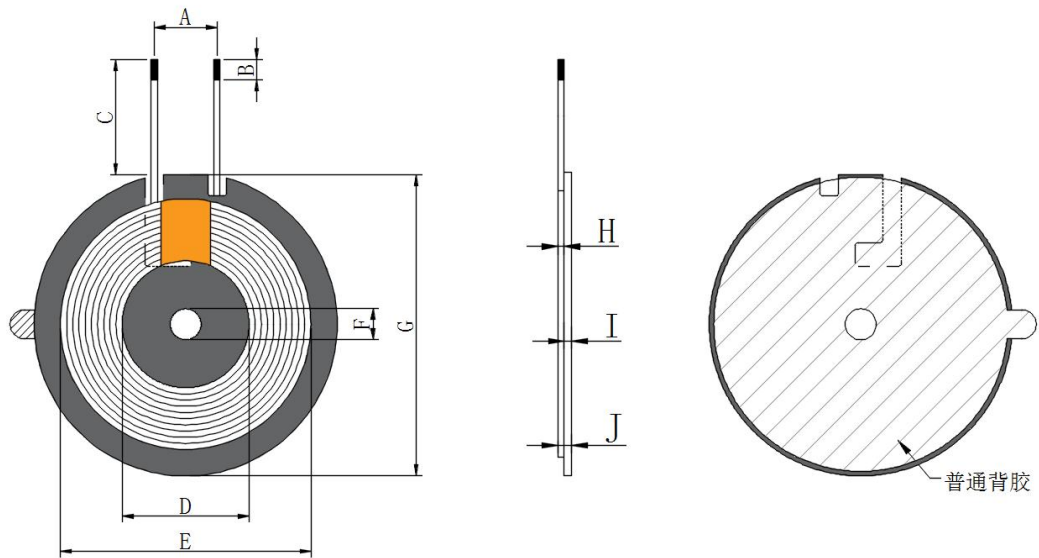
3.1 线圈参数 The parameter of coil

测试项目 Test item	参数特征 Parameter characteristic	建议误差值 Suggest error value
(μH)	6.3	10%
($\text{m}\Omega$)	75.0	MAX最大

3.2 发射端线圈尺寸

Transmitting terminal coil's size

A	B	C	D	E	F	G	H	I	J
10 ± 2	3 ± 1.5	100 ± 2	20.5 ± 0.5	43 ± 2	5.3 ± 0.5	50 ± 1	1.25MA X	0.8 ± 0.15	2.6MA X



单位(Unit):毫米(mm)

圈数 Turns	线径 Wire Dia.	绕线方式 疏/密 Wdg. Type Spred/Close	绕线方向 Wdg. Direction	相交 是/ 否 Intersect Yes/Not	线圈 正/反贴 Coil Positive/Anti Paste
10TS	0.08*105P 丝包 线 (Silk-Covered Wire)	密绕 (Close)	逆时针 (Anticlockwise)	是 (Yes)	反贴 (Anti-Paste)
所有材料要求合格 ROHS 标准					

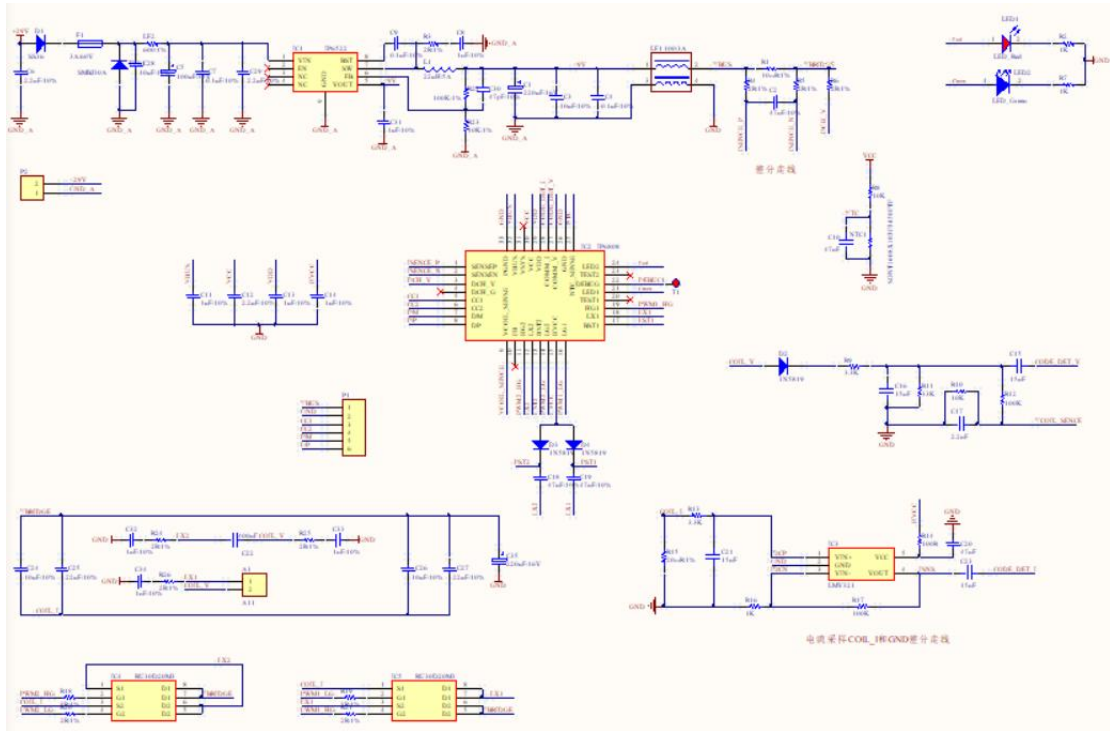
4、发射端线圈参数 Transmitting terminal Coil's parameter

4.1 发射端性能 Transmitting terminal performance

Parameter	Notes and Conditions	Min	Type	Max	Unit
INPUT CHARACTERISTICS					
VIN	Input Voltage	11	24	32	
IIN	Input Current		0.25	0.5	A
	Input No Load Current		20	50	mA
OUTPUT CHARACTERISTICS					
VOUT	Output Voltage	5	9	9.1	V
	Output Ripple			200	mVPP
IOUT	VIN=Min to Max	0		1	A

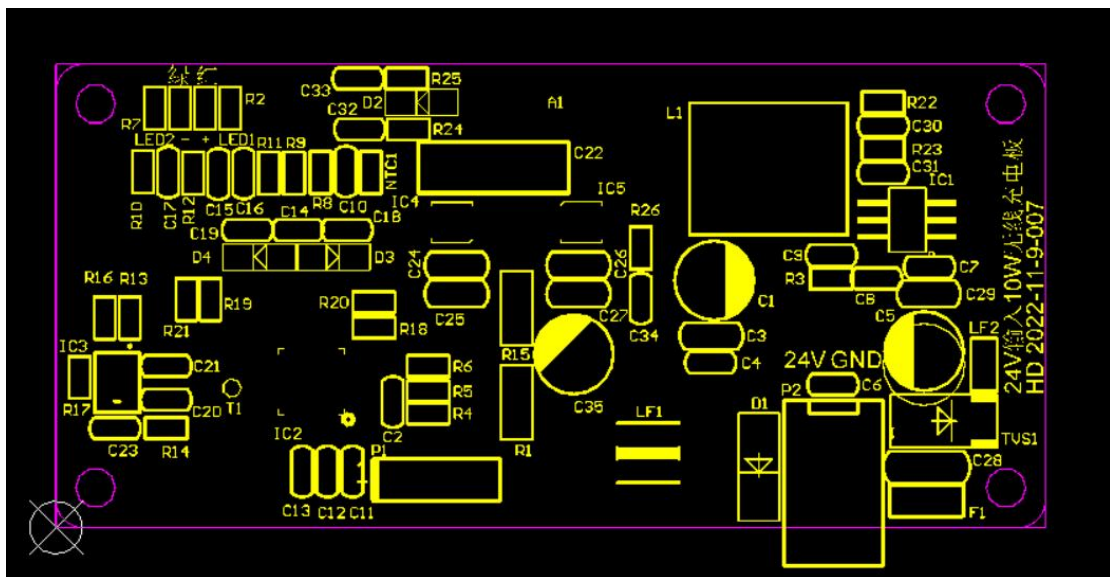
5、发射端原理图 Transmitting terminal principle

5.1 原理图 (部分) Schematic Diagram (Part)

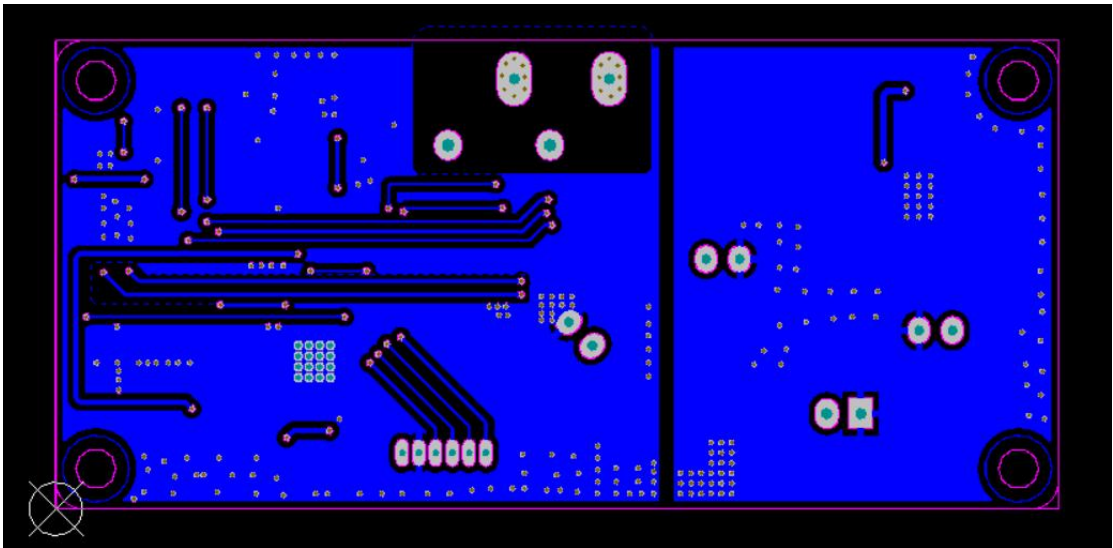


6、PCBA

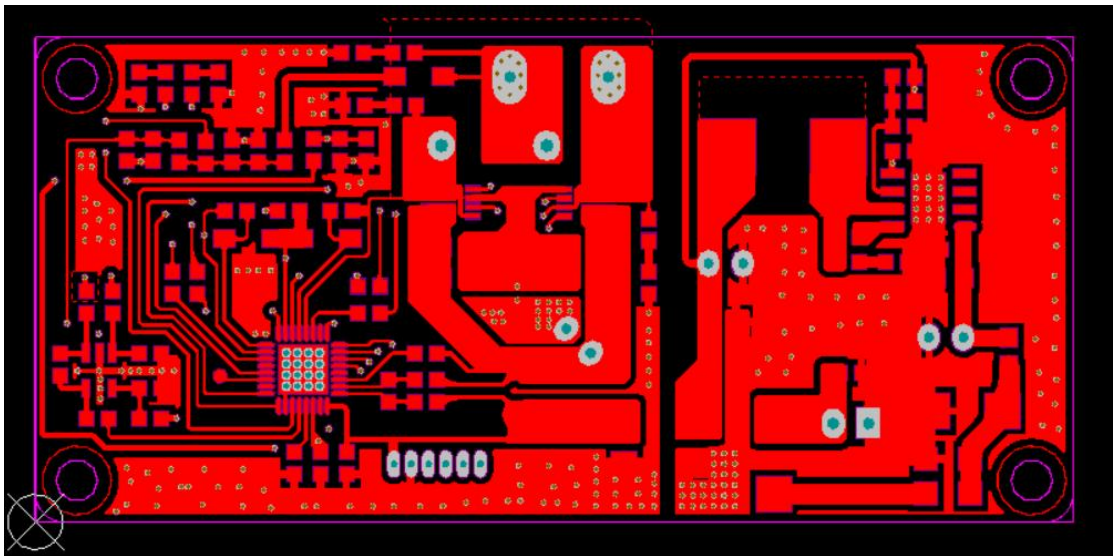
6.1 发射端 PCB 原件位置正面 Transmitting terminal PCB original location front



6.2 发射端 PCB 背面 Transmitting terminal PCB back



6.3 发射端 PCB 布线图正面 Transmitting terminal PCB wiring diagram front



6.4 发射板尺寸 Launch plate size

35 X 75mm

7、物料清单 BOM

7.1 发射端清单 transmitting terminal end inventory

序号	Comment	Designator	Footprint	Quantity
1	线路板			1
2	47nF/10%/50V	C2, C10,C18, C19,C20	HT_0603_C	5
3	10uF/10%/16V	C3, C24, C26	HT_0805_C	3
4	0.1uF/10%/50V	C4, C7, C9	HT_0603_C	3
5	2.2nF/10%/50V	C6,C17	HT_0603_C	2
6	1nF/10%/50V	C8	HT_0603_C	1
7	1uF/10%/16V	C11, C13, C14	HT_0603_C	3
8	2.2uF/10%/16V	C12	HT_0603_C	1
9	15nF/50V	C15, C16, C21, C23	HT_0603_C	4
10	22uF/10%/16V	C25, C27	HT_0805_C	2
11	SS36	D1	SMA	1
12	1N5819 (k14)	D2, D3, D4	SOD-123	3
13	1206/3A/60V	F1	HT_1206_R	1
14	IP6522U	IC1	SO-8	1
15	IP6808	IC2	HT_IP6808	1
16	LM321	IC3	HT_SOT_23_5	1
17	KJ0603QD	IC4, IC5	HT_KJ0603QD	2

18	LED_Red 红	LED1	HT_0603_R	1
19	LED_Green 绿	LED2	HT_0603_R	1
20	SDNT1608X103F3450FTF	NTC1	HT_0603_R	1
21	10mR/1%	R1	HT_1206_R	1
22	1K/1%	R2, R7, R16	HT_0603_R	3
23	2R/5%	R3, R4, R5, R18, R19, R20, R21	HT_0603_R	7
24	10K/1%	R10	HT_0603_R	1
25	3.3K/1%	R8, R9, R13	HT_0603_R	3
26	33K/1%	R11	HT_0603_R	1
27	100K/1%	R12, R17	HT_0603_R	2
28	100R/5%	R14	HT_0603_R	1
29	20mR/1%	R15	HT_1206_R	1
30	100Ω电感	LF1	HT_1206_R	1
31	SMBJ30A	TVS1	HT_SMBJ_D	1
32	22uH/5A	L1	HT_10X10	1
33	A11	A1	HT_SIP2	1
34	220uF/16V 高频低阻 (蓝色)	C1	HT_220UF/16V	1
35	100uF/35V 高频低阻 (蓝色)	C5	HT_100UF/35V	1
36	CBB 电容	C22	404J/100V	1
37	Header 2 带卡扣 (HA-2WAP)	P2	HT_2.54MM_2P_W	1

8、气候条件规格 Weather conditions standard

8.1 气候条件 **Weather condition**

工作温度: **0°C ~40°C.**

Operating temperature 0°C ~40°C.

工作湿度: 10% ~80%(没有水气凝结)

Operating humidity: 10% ~80% (No steam condensation)

存储温度: **-20°C~70°C**

Storage temperature: -20°C ~70°C

存储湿度: **to 20,000ft.**

Storage humidity: to 20,000ft.