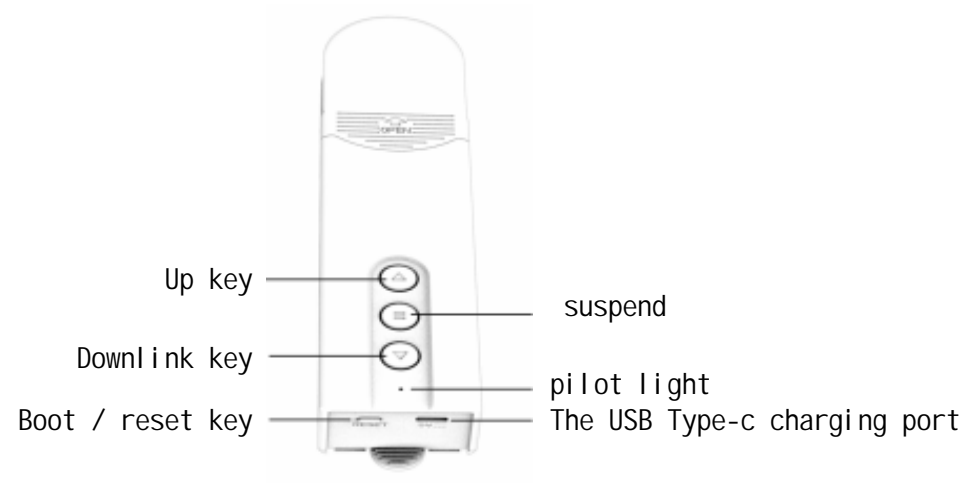
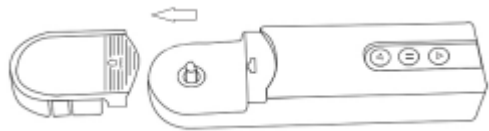


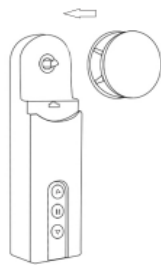
Blinds motor



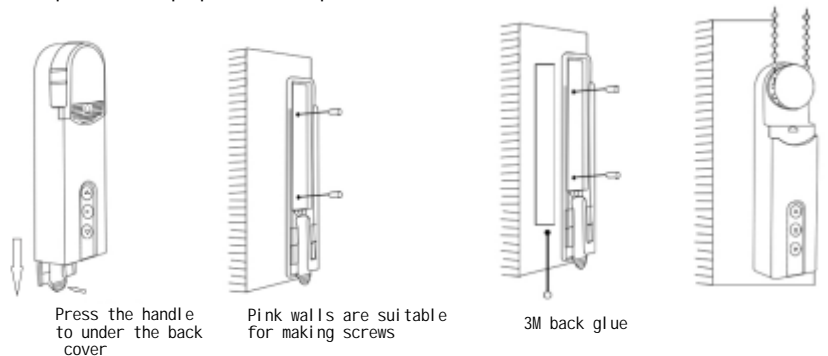
1. Determine the installation position and remove the equipment head cover first



2. Select the turntable according to the following matching relationship of the turntable-pull, and install it on the output shaft of the equipment



5. Take off the back cover of the equipment and fix it in the 3-5mm position just marked down.
 Note: for the rough surface of powder increase, it is recommended to screw and fix, for the smooth surface of ceramic tile, it can be fixed with double-sided glue. After fixing the good cover, put the equipment and pull beads on the net to the back cover

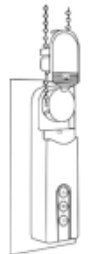


Press the handle to under the back cover

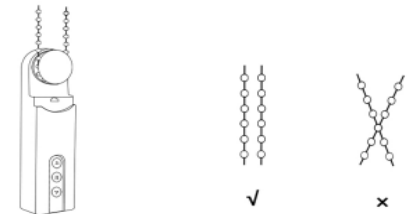
Pink walls are suitable for making screws

3M back glue

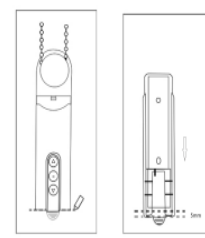
6. Remove the tooth piece on the head cover, reinstall the head cover back to the equipment, and complete the installation
 Note: When the equipment is installed, do not pull the bead rope by hand to damage the original curtain



3. Will pull on the equipment turntable, and pull down (not too tight), keep bead pull the equipment to the wall, and find the right position, single press the equipment upward or downward key, ensure pull bead stable rotation, not skid (pay attention to the bead than too tight, ensure pull bead end is straight, do not slip phenomenon)



4. Install the settings in the selected position and trace the wall along the bottom edge with a pen



Remote control pairing mode.
 1, Bluetooth, built-in wireless network, matching method: press the remote control left and right button, red light constant flash, first press the shutter motor RESET button to shut down, hold the RESET button to the light embroidery slowly flashing. Express presses the machine RESET button twice, the two lights of the machine and the red light of the sprinkler controller flicker, indicating that it is matching, and the light is turned off after the machine is successful pairing

essential parameter
 Product color: white
 Product name: Blinds motor
 Product model: LY-1690
 Connection: Bluetooth
 Operating temperature: -10 -50
 Working humidity: 0-95% RH, no condensation
 The package includes: shutter motor * 1, remote control * 1, spare turntable * 4, screw * 2, Expansion tube * 2, 3M glue * 1, instructions * 1.

This device complies with Part 15 of the FCC Rules. Operation is subject to the following two conditions: (1) this device may not cause harmful interference, and (2) this device must accept any interference received, including interference that may cause undesired operation

NOTE: This equipment has been tested and found to comply with the limits for a Class B digital device, pursuant to Part 15 of the FCC Rules. These limits are designed to provide reasonable protection against harmful interference in a residential installation. This equipment generates, uses and can radiate radio frequency energy and, if not installed and used in accordance with the instructions, may cause harmful interference to radio communications. However, there is no guarantee that interference will not occur in a particular installation.

If this equipment does cause harmful interference to radio or television reception, which can be determined by turning the equipment off and on, the user is encouraged to try to correct the interference by one or more of the following measures:

- Reorient or relocate the receiving antenna.
- Increase the separation between the equipment and receiver.
- Connect the equipment into an outlet on a circuit different from that to which the receiver is connected.
- Consult the dealer or an experienced radio/TV technician for help.

Warning: changes or modifications not expressly approved by the party responsible for compliance could void the user's authority to operate the equipment

The device has been evaluated to meet general RF exposure requirements, the device can be used in portable exposure condition without restriction