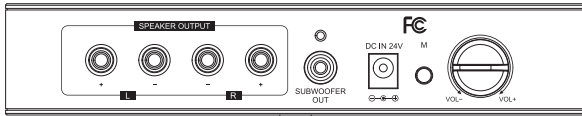


Please read this user's guide before using your new speaker kit.

User's Guide



Package Contents

- Transmitter
- Receiver
- 9V AC Adapter
- 24V AC Adapter
- User's Guide

Features

- 5.8GHz digital wireless link provides crystal-clear audio signals.
- Auto channel selection.
- Up to 100 feet (30.5m) operation distance between transmitter and receiver (line of sight).

Install the Transmitter

1. Make sure your amplifier is off. Connect the transmitter to your amplifier's speaker output terminals with the speaker wire, matching polarities. Or connect your transmitter to the amplifier's RCA output ports with RCA cables (not included).

2. Connect the supplied AC adapter (9V, 1.3 A) to the DC IN 9V jack, then plug it into a standard household outlet.

Install the Receiver

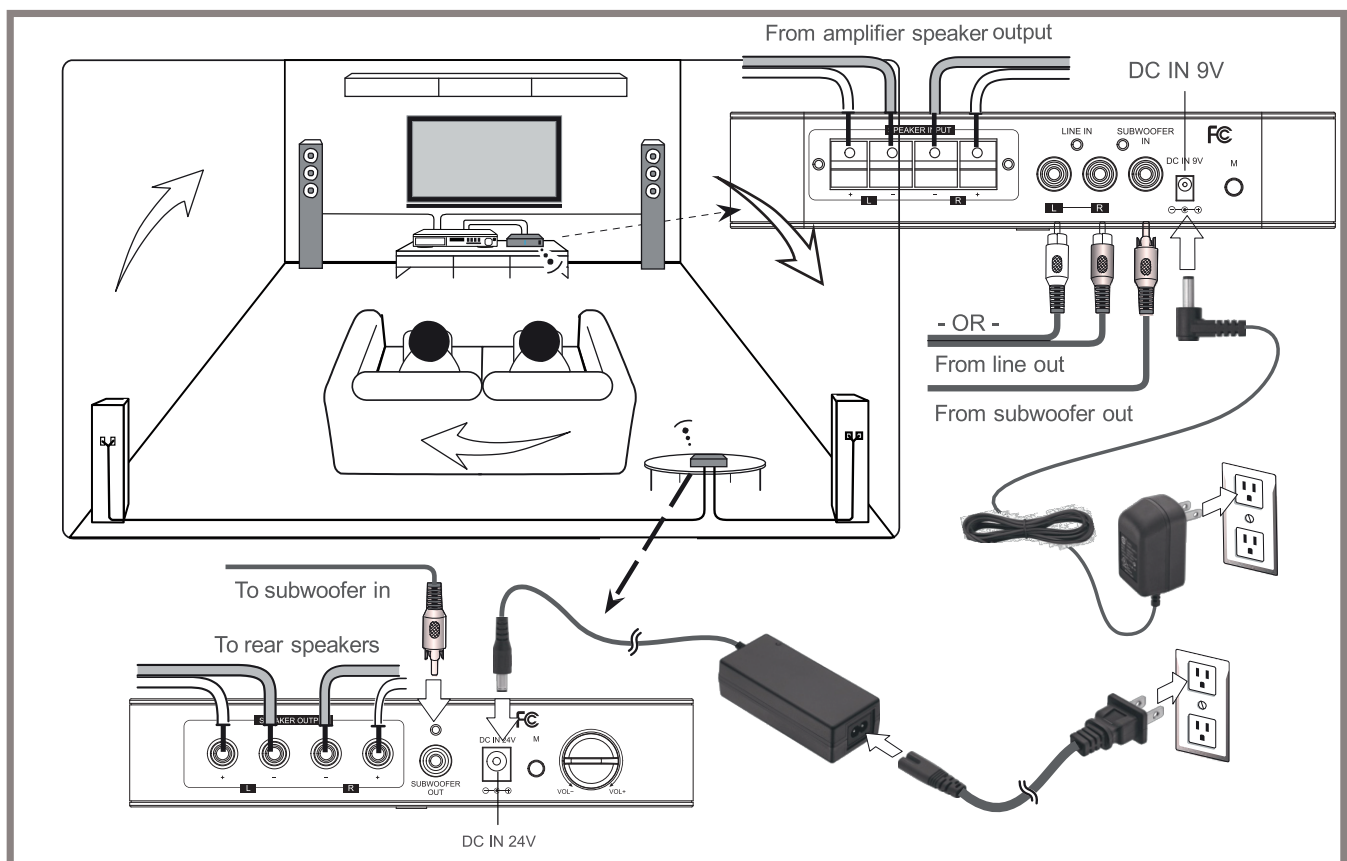
1. Connect the rear speakers to the receiver with speaker wires, matching polarities.
2. Connect the supplied AC adapter (24V, 4A) to the DC IN 24V jack, and then plug it into a standard household outlet.

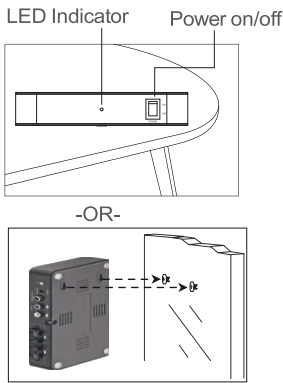
Note:

- Make sure the exposed tips of the speaker wires do not touch each other, and make sure they are fully inserted into the terminals.
- This speaker kit is designed for connecting to your amplifier surround speaker terminals only.
- For speaker wires that have proprietary connectors, you may need to strip the end of the wires to allow connection to the receiver. However, check with the speaker manufacturer before doing this, as it may void the warranty.
- When the RCA cables are connected, audio input from the speaker terminal will be mixed.
- Unplug the AC adapters from the AC outlet before unplugging it from the transmitter or receiver.
- Use the supplied AC adapters only. Using an AC adapter not designed for this product may cause damage.

Place the Transmitter and Receiver

The transmitter and receiver must be placed within 100 feet for proper operation. They can be placed horizontally on a flat surface, or mounted on a wall using the mounting holes on the bottom.





Note :

If you need to mount the receiver on a wall, install it against the wall in such a way that the ventilation slots are not blocked.

To optimize the reception performance, place the transmitter and receiver in the same orientation.

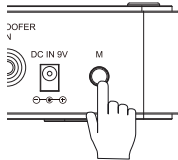
Use Your Speaker Kit

1. Once the AC adapters are connected, the receiver LEDs light green. The speaker kit enters standby mode.
2. Turn on your amplifier and then play the audio or video source through your amplifier.
3. When an audio signal is detected by the transmitter and the transmitter signal is detected by the receiver, the speaker kit will automatically go into active mode. The transmitter and receiver LEDs will both turn blue.

Note : After powering on, if there is no signal input within 17 minutes, the speaker kit enters standby mode.

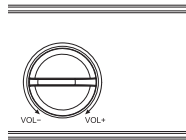
Change the Channel

If you experience any interference, press and hold the M button on both units. The units will then automatically pair.



Adjust the Volume Balance

1. Power on the transmitter and receiver, and then turn on the amplifier and adjust it to your normal listening level.
2. Adjust the receiver's VOL +/- control to balance the front and rear speaker sound level. This step is only necessary during first-time installation of the speaker kit with your system.
3. After balance setup, simply use the volume control on your amplifier to adjust speaker volume during playback.



Optimize Your Surround Sound

Many surround-sound systems let you adjust the delay between the front and rear speakers. To optimize your setup, adjust the rear speaker delay response by about 20 milliseconds.

Specifications

Audio Output Level	Subwoofer out: 470mV
.....	Speaker out: 50W (Load at 4Ω)
Input Sensitivity	Line in: 470mV
.....	Subwoofer in: 470mV
.....	Speaker in: 7V

Frequency Response	Subwoofer: 20Hz-200Hz
.....	Speaker: 20Hz-20kHz
Audio Distortion	Subwoofer: <1%
.....	Speaker: <10%
Signal to Noise Ratio	>80dB
Operation Distance	100 ft (30.5m)
Dimensions (H×W×D)	7.3 x 3.9 x 1.4 inch
.....	185 x 100 x 35.5mm
Weight	3.3 lb. (1.5kg)

Specifications are subject to change and improvement without notice. Actual product may vary from the images found in this document.

FCC Information

This equipment has been tested and found to comply with the limits for a Class B digital device, pursuant to Part 15 of the FCC Rules. These limits are designed to provide reasonable protection against harmful interference in a residential installation. This equipment generates, uses and can radiate radio frequency energy and, if not installed and used in accordance with the instructions, may cause harmful interference to radio communications. However, there is no guarantee that interference will not occur in a particular installation. If this equipment does cause harmful interference to radio or television reception, which can be determined by turning the equipment off and on, the user is encouraged to try to correct the interference by one or more of the following measures:

- Reorient or relocate the receiving antenna.
- Increase the separation between the equipment and receiver.
- Connect the equipment into an outlet on a circuit different from that to which the receiver is connected.
- Consult the dealer or an experienced radio/TV technician for help.

If you cannot eliminate the interference, the FCC requires that you stop using your product. Changes or modifications not expressly by the party responsible for compliance could void the user's authority to operate the equipment.

This device complies with Part 15 of the FCC Rules. Operation is subject to the following two conditions: (1) This device may not cause harmful interference, and (2) this device must accept any interference received, including interference that may cause undesired operation.

Limited Warranty

All OSD AUDIO electronics have (2) year Limited Warranty against defects in materials and workmanship. Proof of purchase must accompany all claims. During the warranty period OSD AUDIO will replace any defective part and correct any defect in workmanship without charge for either parts or labor

OSD AUDIO may replace returned electronics with a product of equal value and performance. In such cases, some modifications to the mounting may be necessary and are not OSD AUDIO's responsibility.

For this warranty to apply, the unit must be installed and used according to its written instructions. If necessary, repairs must be performed by OSD AUDIO. The unit must be returned to OSD AUDIO at the owner's expense and with prior written permission. Accidental damage and shipping damage are not considered defects, nor is damaged resulting from abuse or from servicing performed by an agency or person not specifically authorized in writing by OSD Audio

OSD AUDIO sells products only through authorized dealers and distributors to ensure that customers obtain proper support and service. Any OSD AUDIO product purchased from an unauthorized dealer or other source, including retailers, mail order dealers and online sellers will not be honored or serviced under existing OSD AUDIO warranty policy. Any sale of product by an unauthorized source or other manner not authorized by OSD AUDIO shall void the warranty on the applicable product.

Damage to or destruction of components due to application of excessive power voids the warranty on those parts. In these cases, repairs will be made on the basis of the retail value of the parts and labor. To return for repairs, you must email customer service at RMA@OSDAUDIO.com for a Returned Merchandise Authorization (RMA) number then the unit must be shipped to OSD AUDIO at the owner's expense, along with a note explaining the nature of service required. Be sure to pack the product(s) in a corrugated container with at least 3 inches of resilient material to protect the unit from damage in transit.

This Warranty Does Not Cover: Damage caused by abuse, accident, misuse, negligence, or improper operation (installation) • Any products that have been altered or modified • Any product whose identifying number of decal, serial #, etc. has been altered, defaced or removed • Normal wear and maintenance.

Complies with the European Union's "Restriction of Hazardous Substances Directive," which protects the environment by restricting specific hazardous materials and products.

