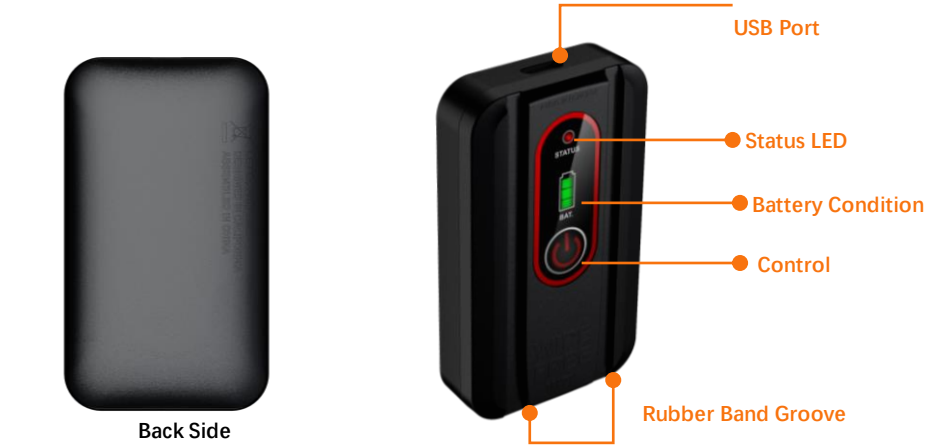
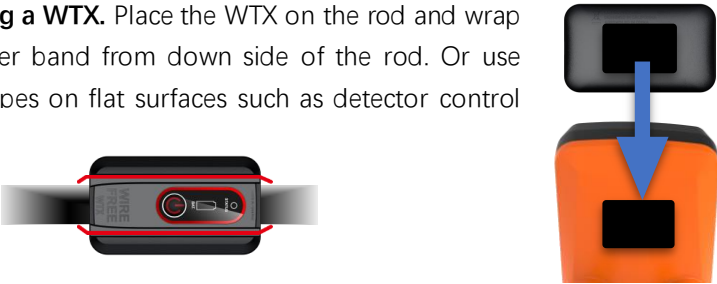


INTRODUCTION



Mounting a WTX. Place the WTX on the rod and wrap the rubber band from down side of the rod. Or use Velcro tapes on flat surfaces such as detector control



Connecting the WTX with Detectors.



Power on/off a WTX. Press the power button once to turn on the transmitter. Hold for 2 seconds to turn it off.



SPECIFICATIONS

Technology	2.4G wireless
Audio Cable	25CM/10" straight
Audio Connector	Come with 1/4" 90° audio jack. Customized connector available for Garrett AT Pro ATX AT Max, White's MXSPORT
Attaching methods	Clip on rod by rubber band(included), attach to surface by Velcro pad (included)
Transmitting distance	10meters in open area
Protection level	Splash-proof, not submersible underwater
Control	One touch button control
Indications	Battery condition and status
Dimensions	65mmx38x13mm Weight 38gram
Battery	900mAh Li-Po battery for 24Hrs continuously working
Charging time	Around 4 hours
Recharge port	USB Type-C

HOW TO WORK?

1, If the transmitter works with Receiver WRX

1.1 CONNECT A RECEIVER WRX. Insert the 6.35mm or 1/4" jack of the wire headphones into the female port of WRX.



1.2 POWER ON THE TRANSMITTER.

1.3 POWER ON THE RECEIVER WRX AND PAIR IT WITH THE TRANSMITTER. Hold the knob and turn to clockwise direction to turn it on. Keep turning to set the volume higher. Turn it anti-clockwise direction to set the volume lower. Turn it to the end to power off.

The WRX will pair with the last transmitter automatically. Quick turn the WRX "on-off-on" to pair a new transmitter.



2, If the transmitter WTX works with Lite Headphones

2.1 HEADPHONE ADJUSTMENT

Before wearing the lite headphone for the first time you should adjust it properly to achieve the best sound and ambient noise attenuation.



Unfold the headphone pad as the figure 1. and 2. Select the appropriate lock-in position on both sides of the headband as figure 3. The pads will adjust the angle automatically according to your head size.

2.2 POWER ON TRANSMITTER

Make sure the transmitter is fully charged and press the power button for 1 second. The LED indicator will start to flash. The battery condition LED will indicate the battery life for 3 seconds.

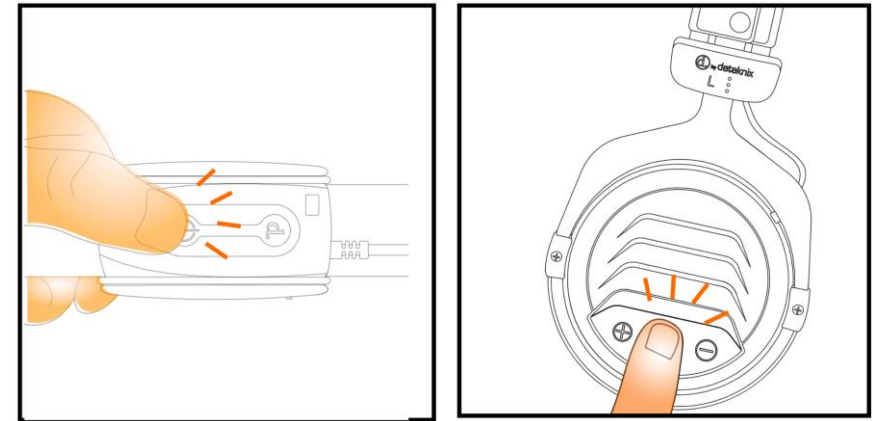
2.3 POWER ON HEADPHONE

Make sure the headphones are fully charged and press the power button (between two volume buttons) for 1 second. The LED indicator will start to flash.

2.4 PARING (when necessary)

If you need to pair them again, please place the Lite Headphones to within 10cm of the transmitter, press and release the power button of the headphone quickly. The LED indicator of the transmitter will change to steady condition.

3, If the transmitter works with Pro Headphones



3.1 POWER ON THE TRANSMITTER

Make sure the transmitter is fully charged and press the power button for 1 second. The LED indicator will start to flash RED light. The LED indicator will turn to still when connected with the Pro headphones.

3.2 POWER ON THE PRO HEADPHONES

Keep press the power button for 2 seconds to power on. The status LED will start blinking when powered on. The headphones will connect with the last paired transmitter (powered on condition) automatically.

3.3 PARING (when necessary)

When the Pro headphones is not connected with the last transmitter it will blink at a fast frequency. You just need to press the headphones power button once quickly near the new transmitter (powered on condition). The headphones LED will blinks at a slow frequency when pairing successfully.

FCC Statement

This equipment has been tested and found to comply with the limits for a Class B digital device, pursuant to part 15 of the FCC Rules. These limits are designed to provide reasonable protection against harmful interference in a residential installation. This equipment generates, uses and can radiate radio frequency energy and, if not installed and used in accordance with the instructions, may cause harmful interference to radio communications. However, there is no guarantee that interference will not occur in a particular installation. If this equipment does cause harmful interference to radio or television reception, which can be determined by turning the equipment off and on, the user is encouraged to try to correct the interference by one or more of the following measures:

- Reorient or relocate the receiving antenna.
- Increase the separation between the equipment and receiver.
- Connect the equipment into an outlet on a circuit different from that to which the receiver is connected.
- Consult the dealer or an experienced radio/TV technician for help.

Caution: Any changes or modifications to this device not explicitly approved by manufacturer could void your authority to operate this equipment.

This device complies with part 15 of the FCC Rules. Operation is subject to the following two conditions: (1) This device may not cause harmful interference, and (2) this device must accept any interference received, including interference that may cause undesired operation.

RF Exposure Information

The device has been evaluated to meet general RF exposure requirement.

The device can be used in portable exposure condition, compliance with exposure requirements.