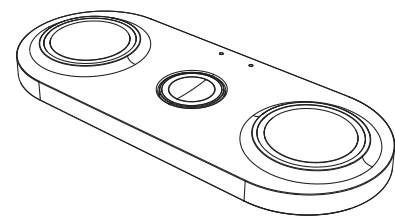


80mm

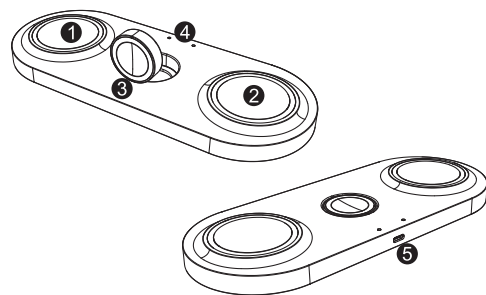
G901 Instruction Manual



3 in 1 Magnetic Wireless Charging Pad

1. Introduction:

- 1 Magnetic wireless charging area for iPhone.
- 2 Wireless charging area for Airpods/enabled wireless charging phones.
- 3 Wireless charging area for iWatch.
- 4 Indicator light: red light, blue light.
- 5 TYPE-C Female.

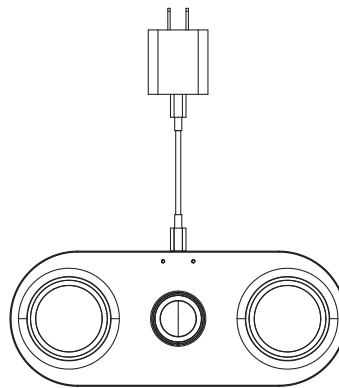


EN-1

2. Operation instructions:

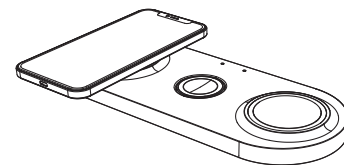
2.1 It's recommended to use the QC3.0 or PD adapter to connect Type-c port (When QC3.0 and PD adapter are used, the product defaults to 9V voltage input).

2.2 The red light is on when the product is powered.



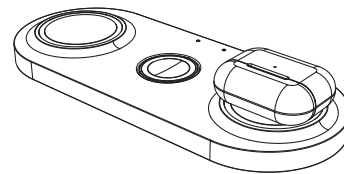
EN-2

2.3 Charging for iPhone: Place the iPhone flat on the side of the area with magnetic wireless charger, and the indicator light is blue, indicating that it is charging normally.



EN-3

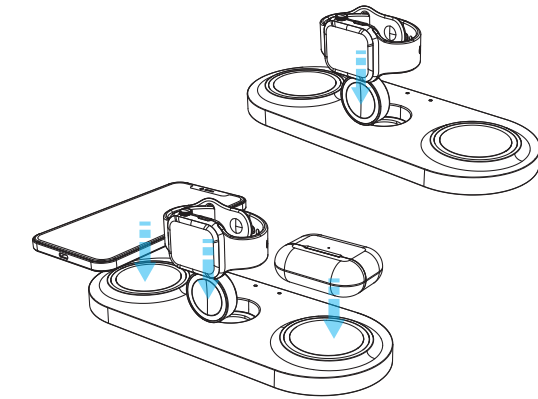
2.4 Charging for Airpod: Put the Airpods flat on the other side of the wireless charger area to charge, and the indicator light is blue, indicating that it is charging normally.



EN-4

2.5 Wireless charging mode of Apple watch: (1) Place the iWatch wireless charger flat to charge. (2) Move the wireless charger of the iWatch to the vertical position to charge.

2.6 iWatch charging: Put the iWatch on the wireless charging area of the iWatch, align the magnetic attraction, and the watch will light up the "charging sign", indicating that it is charging normally.



3. Specifications:

Name	3 in 1 Magnetic Wireless Charging Pad	Model	G901
Product Size	234 * 95 * 12 (mm)	Power supply Port	Type-C
Input	9V --- 2A	output power	18W (Max)

4. Cautions:

4.1 This product is a three-in-one wireless charger. When all functions are used at the same time, the power demand is large. It is recommended to use a power adapter above 18W to power the product, and use a 3A cable to prevent affecting the charging speed.

4.2 Please fully plug the Type-C power into the port to make sure the charger is charging.

4.3 Do not put metal foreign objects in the charging area of iPhone, Airpod, iWatch to ensure effective charging of devices.

4.4 It is recommended that the temperature should not exceed 28°C, which will affect the charging speed.

EN-5

80mm

IC Warning

This device complies with Industry Canada's licence-exempt RSSs. Operation is subject to the following two conditions:

- (1) This device may not cause interference;
- (2) This device must accept any interference, including interference that may cause undesired operation of the device.

Le présent appareil est conforme aux CNR d'Industrie Canada applicables aux appareils radio exempts de licence. L'exploitation est autorisée aux deux conditions suivantes:

- (1) l'appareil ne doit pas produire de brouillage, et

(2) l'utilisateur de l'appareil doit accepter tout brouillage radioélectrique subi, même si le brouillage est susceptible d'en compromettre le fonctionnement.

The information listed above provides the user with information needed to make him or her aware of a RF exposure, and what to do to assure that this radio operates within the FCC exposure limits of this radio.

The device complies with RF specifications when the device used at 10cm from the body. Third-party belt-clips, holsters, and similar accessories used by this device should not contain any metallic components. Body-worn accessories that do not meet these

requirements may not comply with RF exposure requirements and should be avoided. Use only the supplied or an approved antenna.

FCC Warning

15.19 Labeling requirements.

This device complies with part 15 of the FCC Rules. Operation is subject to the following two conditions: (1) This device may not cause harmful interference, and (2) this device must accept any interference received, including interference that may cause undesired operation.

15.21 Information to user.

Any Changes or modifications not expressly approved by the party responsible for

compliance could void the user's authority to operate the equipment.

15.105 Information to the user.

Note: This equipment has been tested and found to comply with the limits for a Class B digital device, pursuant to part 15 of the FCC Rules. These limits are designed to provide reasonable protection against harmful interference in a residential installation. This equipment generates uses and can radiate radio frequency energy and, if not installed and used in accordance with the instructions, may cause harmful interference to radio communications. However, there is no guarantee that interference will not occur in a particular installation. If this equipment does

cause harmful interference to radio or television reception, which can be determined by turning the equipment off and on, the user is encouraged to try to correct the interference by one or more of the following measures:

- Reorient or relocate the receiving antenna.
- Increase the separation between the equipment and receiver.
- Connect the equipment into an outlet on a circuit different from that to which the receiver is connected.
- Consult the dealer or an experienced radio/TV technician for help

FCC RF Radiation Exposure Statement:

1. This Transmitter must not be co-

located or operating in conjunction with any other antenna or transmitter.

2. This equipment complies with RF radiation exposure limits set forth for an uncontrolled environment.

This equipment should be installed and operated with minimum distance 15cm between the radiator and your body.