

G603 使用说明书



三合一无线充电器

产品介绍

- ① 15W手机无线充电区域
- ② 5W耳机无线充电区域
- ③ 3W手表无线充电区域
- ④ 绿色指示灯

- ⑤ Type-C电源接口



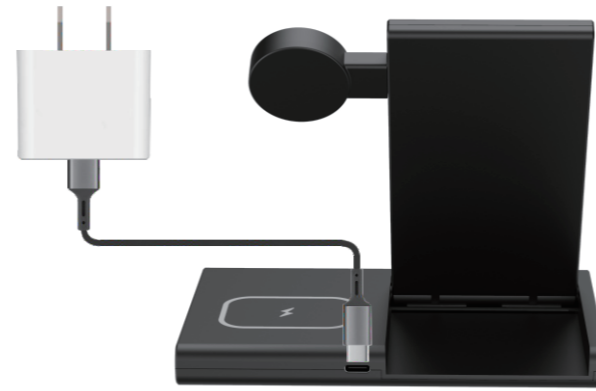
1. 使用步骤

只需将手机/手表/耳机放至无线充电模块就可开始充电。



2. 连接外部电源, 接通电源

2.1 使用支持QC3.0的适配器并连接它通过Type-C型电源线连接到G603无线充电器。



2.2 Type-C电源插头请充分插入端口, 以免接触不良导致产品无法供电。

2.3接通电源后,手机无线充电区域LED指示灯为蓝色,耳机无线充电区域LED指示灯为绿色,指示灯分别闪烁三次后熄灭,进入待机状态。

3. 充电说明

3.1 手机竖立或横放在15W无线充电区域,居中对准放置,绿色指示灯常亮后表示充电正常。

3.2 耳机放置在5W无线充电区域,放置在白色方框区域上,耳机指示灯常亮后表示充电正常。

3.3 将手表放置在安装好的手表无线充电模块上,手表会被磁吸固定,当手表屏幕显示充电图标表示已在正常充电。

3.4 手机背面禁止粘贴金属片或者含金属的手机保护壳,会造成无法充电。



4. 指示灯介绍

4.1 配备蓝绿两种LED颜色指示显示手机充电状态。

4.2 接通电源后,蓝色和绿色LED指示灯闪烁三次后熄灭,进入待机状态。

4.3 手机充电时蓝色LED常亮,耳机充电时绿色LED常亮,同时充电时显示青色。

4.4 手机与耳机无线充电区域充电时,充电异常时蓝,青三色交替闪烁提醒。比如金属异物报警。

4.5 手机无线充电区域充电正常,耳机无线充电区域充电异常时,蓝,青两种颜色交替闪烁提醒。

4.6 耳机无线充电区域充电正常,手机无线充电区域充电异常时,绿,青两种颜色交替闪烁提醒。

名称	无线充电器	型号	G603
产品尺寸	146×153×14mm	电源端口	≤5mm
输入	9V---3A 12V---2A	输出	顶部:最大3W 前面:最大15W 底部:最大5W

FCC警告声明

⚠警告:未经合规责任方明确批准的变更或修改将使用户操作设备的权限失效。

注:根据FCC规则第15部分,本设备已经过测试,符合b类数字设备的限制。这些限制是为了对住宅设备的有害干扰提供合理的保护。这台设备产生、使用和辐射无线电频率能量,如果不按照说明安装和使用,可能对无线电通信造成有害干扰。但是,不能保证在特定的安装中不会发生干扰。如果这个设备对无线电或其他设备造成有害干扰电视接收,可以通过关闭设备来确定,鼓励用户尝试通过以下一种或多种措施来纠正干扰:

- 重新定位或调整接收天线。
- 加大设备与接收器之间的距离。
- 将设备连接到与接收器连接的电路不同的插座上。
- 向经销商或经验丰富的电台/电视技术人员寻求帮助。

该设备必须按照提供的说明安装和操作。用于该发射机的天线必须安装到与所有人至少15厘米的距离,不得与任何其他天线或发射机一起安装或操作。必须向终端用户和安装人员提供天线安装说明和发射机操作条件,以满足射频暴露要求。

G603 Instruction manual

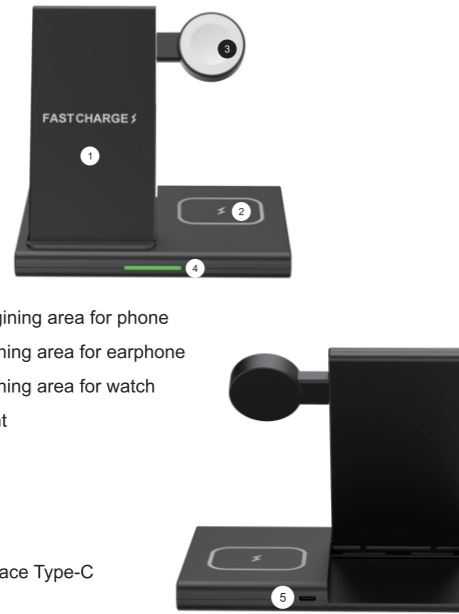


3 in 1 fast wireless charger

Product Introduction

- ① 15W wireless charging area for phone
- ② 5W wireless charging area for earphone
- ③ 3W wireless charging area for watch
- ④ Green indicator light

- ⑤ Power supply interface Type-C



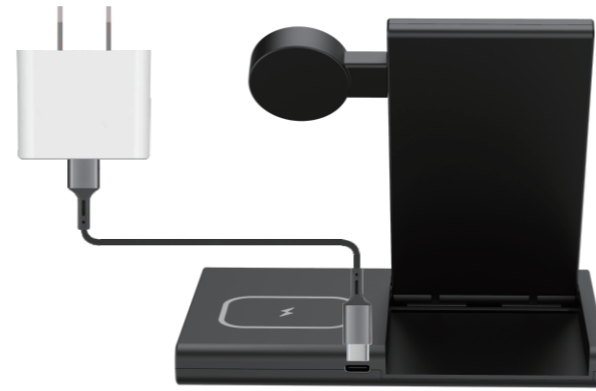
1. Steps for Usage

Just put your phone/watch/earphone in the wireless charging module and start charging.



2. Connect external power supply to power on

2.1 Use an adapter that supports QC3.0, connect the Type-C power cord into G603 wireless charging socket interface.



2.2 Please fully insert the type-C power plug into the port, to avoid poor contact resulting in product power supply failure.

2.3 After the power is turned on, the LED indicator in the wireless charging area of the mobile phone is blue, and the LED indicator in the wireless charging area of the headset is green. The indicator lights flash three times and then go out, and enter the standby state. Indicator lights introduction

3. Charging description

3.1 The mobile phone is placed vertically or horizontally in the 15W wireless charging area, symmetrically placed in the middle, and the green indicator light is always on, indicating that the charging is normal.

3.2 The earphone is placed in the 5W wireless charging area in white bracket. When the earphone indicator light is always on, it means that the charging is normal.

3.3 Place the watch on the installed wireless charging module of the watch, and the watch will be fixed by magnetic suction. When the charging icon is displayed on the watch screen, it indicates that it is charging normally.

3.4 It is forbidden to paste metal sheet or metal protective case on the back of the mobile phone, which will lead to the failure of charging.



4. Introduction to indicator lights (just for phone)

4.1 Equipped with blue and green LED color indicators to show the charging status of the phone.

4.2 After the power is turned on, the blue and green LED indicators flash three times and then go out, and enter the standby state.

4.3 The blue LED is always on when the mobile phone is charging, the green LED is always on when the headset is charging, it shows cyan when charging both at the same time.

4.4 When the mobile phone and earphone are charged in the wireless charging area, the blue, green and cyan alternately flash to remind when the charging is abnormal. Such as metal foreign body alarm.

4.5 When the mobile phone wireless charging area is charging normally, and the headset wireless charging area is charging abnormally, the blue and cyan colors alternately flash to remind.

4.6 The headset wireless charging area is charging normally, and the mobile phone wireless charging area is charging abnormally, the green and cyan colors alternately flash to remind.

Name	Wireless charger	Model	G603
Product size	146×153×14mm	Power supply port	≤5mm
Input	9V---3A 12V---2A	Output	Top : 3W Max Front : 15W Max Back : 5W Max

FCC WARNING STATEMENT

⚠ Warning: Changes or modifications not expressly approved by the party responsible for compliance could void the user's authority to operate the equipment.

NOTE: This equipment has been tested and found to comply with the limits for a Class B digital device, pursuant to Part 15 of the FCC Rules. These limits are designed to provide reasonable protection against harmful interference in residential installation. This equipment generates, uses and can radiate radiofrequency energy and, if not installed and used in accordance with the instructions, may cause harmful interference to radio communications.

However, there is no guarantee that interference will not occur in a particular installation. If this equipment does cause harmful interference to radio or television reception, which can be determined by turning the equipment off and on, the user is encouraged to try to correct the interference by one or more of the following measures: - Reorient or relocate the receiving antenna. - Increase the separation between the equipment and receiver. - Connect the equipment into an outlet on a circuit different from that to which the receiver is connected. - Consult the dealer or an experienced radio/TV technician for help.

This equipment must be installed and operated in accordance with provided instructions and the antenna(s) used for this transmitter must be installed top provide a separation distance of at least 15cm from all persons and must not be co-located or operating in conjunction with any other antenna or transmitter. End-users and installers must be provided with antenna installation instructions and transmitter operating conditions for satisfying RF exposure compliance.

FCC WARNING

This device complies with part 15 of the FCC Rules. Operation is subject to the following two conditions: (1) this device may not cause harmful interference, and (2) this device must accept any interference received, including interference that may cause undesired operation.

Any changes or modifications not expressly approved by the party responsible for compliance could void the user's authority to operate the equipment.

NOTE: This equipment has been tested and found to comply with the limits for a Class B digital device, pursuant to Part 15 of the FCC Rules. These limits are designed to provide reasonable protection against harmful interference in a residential installation. This equipment generates, uses and can radiate radio frequency energy and, if not installed and used in accordance with the instructions, may cause harmful interference to radio communications.

However, there is no guarantee that interference will not occur in a particular installation.

If this equipment does cause harmful interference to radio or television reception, which can be determined by turning the equipment off and on, the user is encouraged to try to correct the interference by one or more of the following measures:

- Reorient or relocate the receiving antenna.
- Increase the separation between the equipment and receiver.
- Connect the equipment into an outlet on a circuit different from that to which the receiver is connected.
- Consult the dealer or an experienced radio/TV technician for help.

RF warning for WPT device:

The equipment complies with FCC radiation exposure limits set forth for an uncontrolled environment. During the operation of device a distance of 15cm surrounding the device and 20 cm above the top surface of the device must be respected.