

Instruction Manual

MP5 & FM Receiver

7.0 inch TFT LCD & Manual Telescopic

9601

9601G

Instruction Manual



1. HOME

In the task bar click to enter the main menu interface.



- ① Click here to enter radio player interface.
- ② Click here to enter the music player interface.
- ③ Click here to enter the video player interface.
- ④ Click here to go to photo browsing interface.



- ⑤ Click to go to AV IN interface.
- ⑥ Click to go to aux input interface.
- ⑦ Click here to go to the Bluetooth player interface.
- ⑧ Click to go to GPS interface.
- ⑨ Click to go to the prev/next page.
- ⑩ Click here to adjust the screen brightness and off screen.
- ⑪ Click to go to System Settings interface.

1

2. MUSIC

In the main menu interface, touch MUSIC icon to enter the music state.

2.1 Features taskbar icon



- ① Click here to enter the menu setting.
- ② The volume regulation, padding can adjust the volume.
- ③ Return
- ④ Enter the main menu



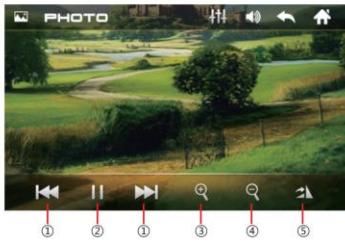
- ⑤ Click here to play the prev/next song.
- ⑥ Click here to play / pause.
- ⑦ Click here to Shuffle.
- ⑧ Click here loop.
- ⑨ Playback progress display.

3. PHOTO

In the main menu interface, touch PHOTO icon to enter the photo state.

- ① Click here to play the prev/next picture.
- ② Click here to play / pause.
- ③ Click here zoom in.
- ④ Click here zoom out.
- ⑤ Click here to rotate image.

2



4. VIDEO

In the main menu interface, touch VIDEO icon to enter the video state.



- ① Click here to play the prev/next video.
- ② Click here to play / pause.
- ③ Click here loop.
- ④ Click here to Shuffle.
- ⑤ Playback progress display.Touch paddling can fast forward and rewind.
- ⑥ Next page

3

5. RADIO

In the main menu interface, touch RADIO icon to enter the radio state.



- ① Click here to manually scan radio.
- ② In radio state, each band has six frequency points, press any frequency, you can store your favorite radio stations.
- ③ LOC/DX Switch
- ④ Stereo
- ⑤ Press to automatically search for radio stations and store the FM1- FM2- FM3 18 radio stations, short press to navigate through the radio.
- ⑥ Band Switch

6. BT

In the main menu interface, touch BT icon to enter the bluetooth state.



4

6.1 Click into the dial-up interface.

- ① Bluetooth dial number keys can be used to enter a phone number to dial.
- ② Backspace
- ③ Bluetooth is available under the call state will host the button to switch the sound to the phone.
- ④ hang up the phone.
- ⑤ Dial / answer a call.

6.2 Click to go to the call log interface



- ① Missed record, received record dial record list.
- ② Received record
- ③ Dial record
- ④ Missed record

6.3 Click into contact interface



5

6.4 Click to go to the Bluetooth music interface.



- ① Prev / Next , play / pause function.

7. SETUP

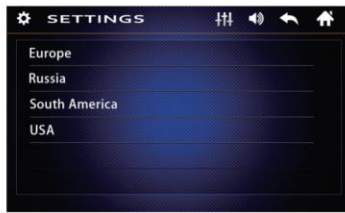
In the main menu interface, touch SETUP icon to enter the setup state.



- ① Click to sound settings.
- ② Click on the language Set up.
- ③ Other settings.
- ④ Click to go to the radio region selection.
- ⑤ Click on the steering wheel control settings.
- ⑥ Click to set the time.

6

7.1 Touch Radio Area ,select the radio region.



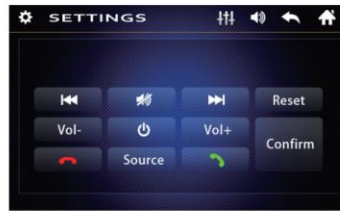
7.2 Touch TIME, into the time setting.



- ① Touch to set the time and date
- ② 12/24 standard switch

7

7.3 Touch Wheel Control , Steering wheel control interface.



Enter the learning state:

- ① long press button on the steering wheel use left hand, then touch screen corresponding function use right hand, make it highlight, mean learn OK;
- ② When the learning was completed, click Confirm.
- ③ When learning has failed, it should be not respond in the steering wheel.
- ④ If operating mistake in the learning process, click Reset to re-learning.

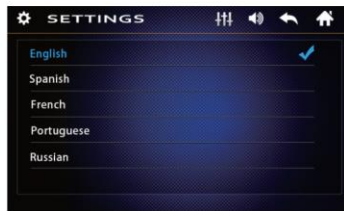
7.4 Other settings interface.



- ① Software Update
- ② Factory Data Reset
- ③ Calibration
- ④ Background Set

8

7.5 Touch Language, select the national language.



8. GPS NAVIGATION (Optional)

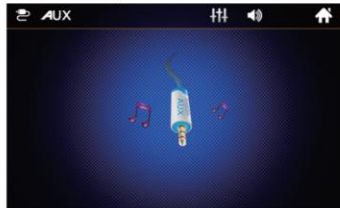
In the main menu interface, touch GPS icon to enter the Navigation.



9

9. AUX IN

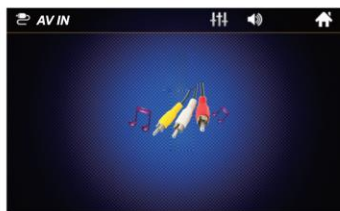
In the main menu interface, touch aux in icon to enter the aux in state.



Front panel 3.5mm audio input.

10. AV IN

In the main menu interface, touch av in icon to enter the av in state.



RCA audio/video input.

10

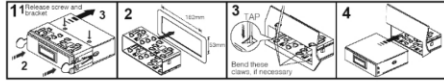
11. INSTALLATION

PRECAUTIONS

- Choose the mounting location carefully so that the unit will not interfere with the normal driving functions of the driver.
- Avoid installing the unit where it would be subject to high temperatures, from direct sunlight or hot air from the heater, or where it would be subject to dust, dirt or excessive vibration.
- Use only the supplied mounting hardware for a safe and secure installation.
- Adjust the mounting angle as desired.

MOUNTING EXAMPLE

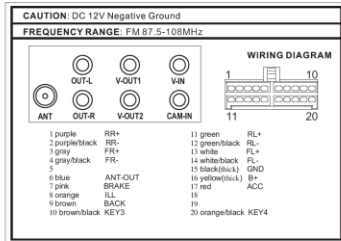
Installation in the dashboard



Note: Keep the release Key in the safe place as you may need it in future to remove the unit from the car.

12. WARNING

Use the specified amperage fuse for each lead. Using a higher amperage fuse may cause serious damage.



11

13. FEATURES

The Unit Features MP5/USB/SD Ports and 7.0 inch TFT LCD

- Electronic P11 Tuning Control with 18 Programmable Stations
- MP3/WMA Compatible
- Preamplified Line-out
- Front Audio Aux-in
- USB Port and SD/MMC Input
- Last Track Memory (RADIO & SD/MMC & USB)
- 7.0 inch TFT LCD

14. SPECIFICATIONS

FM TUNER

Frequency Range	87.5-108MHz
Sensitivity	10 dBu
I.F. Frequency	10.7MHz
Frequency Response	80Hz - 12kHz (± 3dB)
Stereo Separation	>25dB
S/N Ratio	>50dB

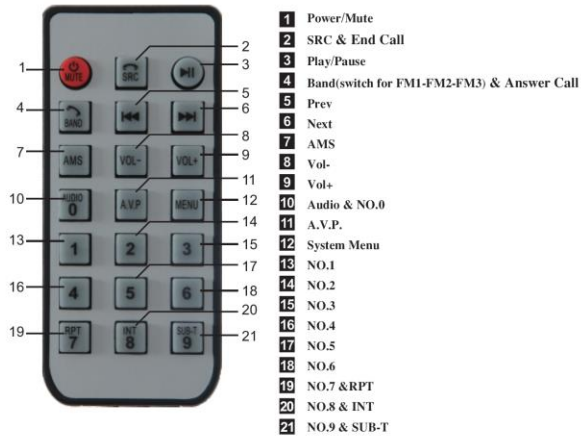
GENERAL

Power Supply Voltage	12 V DC, Negative Ground
Max Current Consumption	15 A
Max Output Power	4 x 55W

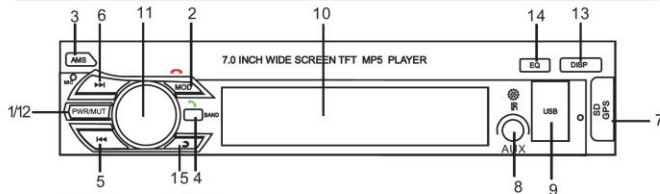
Note: Specifications and the design are subject to possible modification without notice due to improvement.

12

15. REMOTE CONTROL GUIDE



16. LOCATION OF CONTROL



1. PWR: Power ON/OFF
2. MODE: Function Selector (radio/usb/sd/aux-in/bt) & End Call
3. AMS: Auto Seek Search Tuning
4. BAND: Band Button (FM1-FM2-FM3) & Answer Call
- 5./6. VOL- / VOL+: Short press: Prev/Next, Long press: Fast forward / rewind; Manual Auto Search Radio
7. SD: Micro SD Card Slot, GPS navigation map card slot (optional model)
8. AUX IN: AUX IN Jack
9. USB: USB Port
10. LCD: LCD Display
11. VOL/SEL: Volume / Select Control
12. MUTE: Mute ON/OFF
13. DISP: Clock Display
14. EQ: flat-pop-classic-rock / NAVI: Enter the navigation interface (optional model)
15. ↶: Return to the previous level

13

FCC Statement

This equipment has been tested and found to comply with the limits for a Class B digital device, pursuant to Part 15 of the FCC Rules. These limits are designed to provide reasonable protection against harmful interference in a residential installation. This equipment generates uses and can radiate radio frequency energy and, if not installed and used in accordance with the instructions, may cause harmful interference to radio communications. However, there is no guarantee that interference will not occur in a particular installation. If this equipment does cause harmful interference to radio or television reception, which can be determined by turning the equipment off and on, the user is encouraged to try to correct the interference by one or more of the following measures:

- Reorient or relocate the receiving antenna.
- Increase the separation between the equipment and receiver.
- Connect the equipment into an outlet on a circuit different from that to which the receiver is connected.
- Consult the dealer or an experienced radio/TV technician for help.

This device complies with part 15 of the FCC Rules. Operation is subject to the following two conditions: (1) This device may not cause harmful interference, and (2) this device must accept any interference received, including interference that may cause undesired operation.

Changes or modifications not expressly approved by the party responsible for compliance could void the user's authority to operate the equipment.