

Z3D

USER GUIDE

Table of Contents

1	Introduction	2
1.1	Features	2
1.2	What's in the Box	2
1.3	Product Overview	3
2	Getting Started	4
2.1	Inserting the Memory Card	4
2.2	Installation	5
2.3	Adjust Device Position	6
2.4	Connecting to Power	7
2.5	Set Date & Time	8
2.6	Default Settings	8
2.7	Factory Reset	8
2.8	Rear Camera Installation	9
3	Using the Car Dash Cam	10
3.1	Recording Videos	10
3.2	Recording Screen	10
3.3	Adjusting the Settings	11
3.4	Loop Recording	11
3.5	Emergency Video Protection	11
3.6	Motion Detection	12
3.7	Vibration Detection	12
3.8	Parking Monitoring	12
3.9	Taking a Snapshot	12
3.10	Playback Videos & Photos	12
3.11	Managing Video & Photo Files	13
3.12	GPS	13
4	Menu Overview	15
5	FAQs	17
6	Customer Support	18
7	Warranty	18
8	Product Specifications	19

1 Introduction

Welcome to buy the Z3D car dash cam. Protect you and your vehicle with real-time video and audio recording whilst you're driving. Featuring a stealth size design and dual-lens for recording front and back. Please read this manual carefully before using this product. We hope you enjoy using this product.

1.1 Features

- 2560x1440P resolutions
- 2.7" LCD Color screen
- Up to 150-degree wide angle lens
- Built-in G-Sensor
- Motion Detection
- Parking Mode
- Audio Recording
- GPS

1.2 What's in the Box

Car Dash Cam



Car Mount with
Built-in GPS



Rear Camera with 26-foot
USB Cable



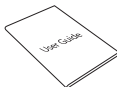
Car Charger with
USB Cable



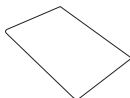
USB Cable



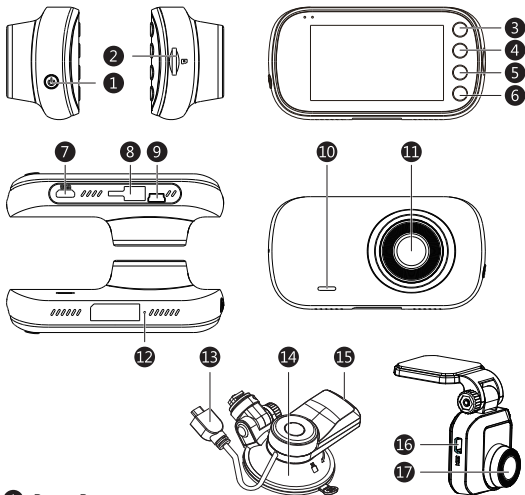
User Guide



Warranty Card



1.3 Product Overview



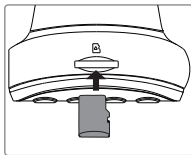
- ① Power Button
- ② TF/MicroSD Card Slot
- ③ ESC/Menu Button
- ④ Up Button
- ⑤ Down Button
- ⑥ OK/Record Button
- ⑦ Micro USB Port
- ⑧ Suction Mount Slot
- ⑨ Mini USB Port

- ⑩ Speaker
- ⑪ Front-View Lens
- ⑫ Mic
- ⑬ USB cable
- ⑭ Suction Cup Mount
- ⑮ USB connector
- ⑯ Mini USB Port
- ⑰ Rear-View Lens

2 Getting Started

2.1 Inserting the Memory Card

Insert the memory card, with the pins facing towards the back of the device, until it clicks into place.



Remove Memory Card

Push the edge of the memory card inward until you feel it click, then allow it to push out until you can remove it from the slot.



WARNING:

It is recommended to format the memory card in the dash cam directly in Menu>General Setting>Format SD card before initial use. Please note that all data saved on the memory card will be erased after formatting.

Note:

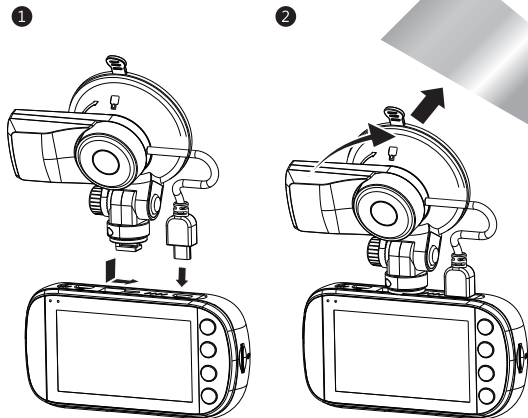
- Supports Micro SDXC cards up to 256GB.
- Do not remove or insert memory card whilst the device is powered on - this may damage the memory card.

Storage Capacity	Video Recording Time
16GB	1.5 Hours
32GB	3 Hours
64GB	6 Hours
128GB	12 Hours
256GB	24 Hours
For reference only	

2.2 Installation

Please follow the below instructions for mounting your dash cam to your vehicles windshield:

1. Slide the car mount into the slot on top of the device until a click sound is heard.
2. Press the suction-cup firmly against your windshield, and rotate the lever clockwise (12 o'clock) to secure.

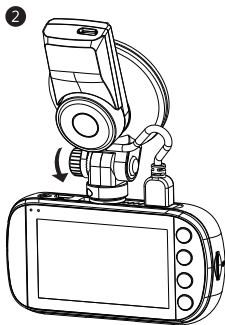
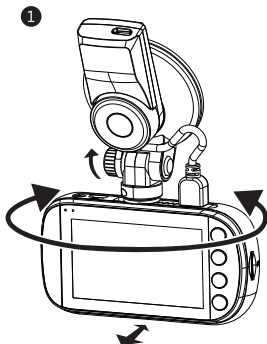


WARNING:

Do not install the device on a tinted window - doing so may damage the tint film.

2.3 Adjust Device Position

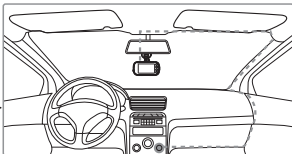
1. Loosen the nut to swivel the device vertically. Click into place and secure by tightening the nut.
2. Swivel the device horizontally for a clear view.



2.4 Powering the Dash Cam

Use only the supplied car charger to power the dash cam and charge the built-in battery.

1. Plug the USB cable (13) on the car mount into the car dash cam's USB connector (7).
2. Plug one end of the USB charging cable into the USB Connector on the car mount (15).
3. Plug the other end into the car charger, and insert that into your vehicles lighter socket.

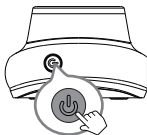


Automatic Power

- Once the vehicle's engine is switched on, the dash cam will automatically power on.
- When the vehicle engine is switched off, the dash cam will automatically save the recording and power off within 10 seconds.

Manual Power

- To manually turn the power on, press and hold the 'Power' Button (1) for up to 3 seconds.
- To manually turn the power off, press and hold the 'Power' Button (1) for 3 seconds.



WARNING:

If the environment reaches 115-degrees Fahrenheit or above, the car charger may stop charging the dash cam battery. This is characteristic of a Lithium Polymer battery and is not a malfunction.

2.5 Set Date & Time

Before using the device, we recommend you set the correct date and time:

1. If the device is recording, short press the 'OK/REC' button (6) to stop and enter Standby Mode.
2. Press the 'Esc/Menu' button (3) to enter the General Settings menu.
3. Press the 'Up' and 'Down' buttons (4 & 5) to select Date/Time and press 'OK/REC' button (6) to confirm.
4. Press the 'Up' and 'Down' buttons (4 & 5) to adjust the value and then press 'OK/REC' button (6) to confirm and move to the next field.
5. With all fields correct, press the 'OK/REC' button (6) to save and exit the menu.



WARNING:

Date/Time settings may automatically reset themselves if the battery is allowed to completely drain. To ensure the correct time you must set the time to your local time zone.

2.6 Default Settings

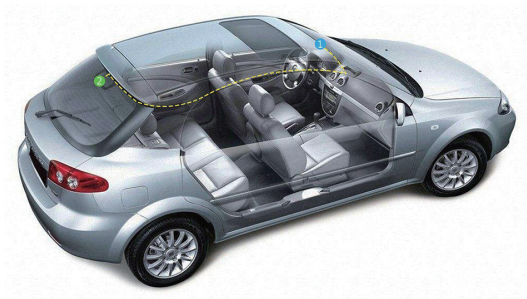
Default Settings			
Resolution	1080P 30,1080P 30	Button Beep	ON
Loop Recording	3 mins	Language	English
Motion Detect	OFF	Frequency	60 Hz
Voice Setup	ON	LCD auto Off	3 Minutes
Date Stamp	ON	Auto Power Off	OFF
G-Sensor sensitivity	Normal	Parking monitoring	OFF

2.7 Factory Reset

To reset the dash cam to factory default settings long press the 'Power' button (1) for 7 seconds.

2.8 Rear Camera Installation

1. Connect one end of the Mini USB cable into the Mini USB Port (9) on the dash camera. Connect the other end into the Mini USB Port (16) on the rear camera.
2. Turn the camera on. The rear-lens view will automatically appear on the display screen in Dual (PiP) format.
Tip: To view full-screen, press the 'Esc/Menu' button (3) to enter the General Settings menu. Use the 'Up' and 'Down' buttons (4 & 5) to select the Screen Display option and press the 'OK/REC' button (6) to confirm. Then select Rear Camera using 'Up' and 'Down' buttons (4 & 5) and confirm with the 'OK/REC' button (6).
3. Whilst looking at the display screen and without removing the adhesive backing, find a suitable location for installing your rear-lens camera on your rear windshield.
4. Having found a suitable location on your rear windshield, peel off the protective plastic backing from the adhesive mount. Press firmly against your rear windshield to secure.
5. For a more organized car environment, the rear camera USB cable can be routed as indicated by the dashed line in the diagram.

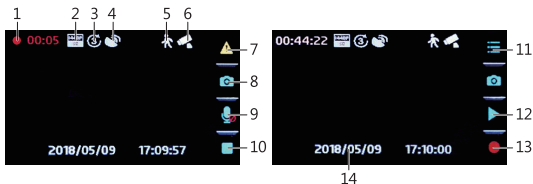


3 Using the Car Dash Cam

3.1 Recording Videos

With an SD card inserted and the device connected to power, when the car engine is switched on the dash cam will automatically power on and start recording. When the vehicle engine is switched off, the dash cam will automatically save the recording and power off within 10 seconds. Alternatively, short press the 'OK/REC' button (6) to stop/start video recording manually.

3.2 Recording Screen



No.	Item	Description
1	Recording	Flashing red light indicates device is recording with time showing current duration of recording.
2	Resolution	Indicates current resolution settings.
3	Loop Recording	Indicates loop recordings length 1, 2 or 3 minutes.
4	GPS	Indicates if the GPS is connected.
5	Motion Detection	Indicates if motion detection on/off.
6	Parking Monitor	Indicates if parking monitor is on/off.
7	Video Protection	Indicates if video protection is active. Press 'Esc/Menu' button (3) to activate when recording.
8	Camera button	Press 'Up' button (4) to enter camera mode.
9	Audio recording	Indicates if audio recording active, press 'Down' button (5) to turn on/off when recording.

No.	Item	Description
10/ 13	Record / Stop	Indicates if device is recording, press 'OK/REC' button (6) to start/stop recording.
11	Menu	Press 'Esc/Menu' button (3) to enter menu.
12	Preview	Press 'Down' button (5) to preview video/photo.
14	Time Stamp	Time and date

3.3 Adjusting the Settings

Customize the video recording and other general settings via the on-screen display (OSD) menus:

If the device is recording, short press the 'OK/REC' button (6) to stop and enter Standby Mode.

1. Press the 'Esc/Menu' button (3) to enter the General Settings menu.
2. Press the 'Up' and 'Down' buttons (4 & 5) to select a menu option and press the 'OK/REC' button (6) to enter the selected menu.
3. Press the 'Up' and 'Down' buttons (4 & 5) to select the desired setting and press the 'OK/REC' button (6) to confirm the setting.
4. From the General Settings menu Press the 'Esc/Menu' button (3) to enter the Feature Settings menu.
5. Press the 'Up' and 'Down' buttons (4 & 5) to select the desired setting and press the 'OK/REC' button (6) to confirm the setting.

3.4 Loop Recording

Videos are recorded and saved to the memory card in set intervals. Once the memory card is full, Loop Recording automatically overwrites the earliest unprotected saved file. This prevents long duration video clips from being lost in a single overwrite. Video files can be saved to the memory card in 1, 2 or 3 mins intervals. **General Settings > Loop Recording**

3.5 Emergency Video Protection

If Vibration Detection is enabled and senses an unusual impact or collision the dash cam will automatically protect the currently recorded video file from being overwritten. A ▲ icon appears top left to signify the current recording is protected. To manually protect a video file during a recording, short press the 'Esc/Menu' button (3).

3.6 Motion Detection

With Motion Detection enabled, video recording is automatically started when movement is detected by the camera lens. After approximately 10 seconds with no movement detected, video recording is automatically paused.

Enable/disable feature: **Feature Settings > Motion Detect**

3.7 Vibration Detection

The Vibration Detection feature senses for unusual impacts or collisions detected by the built-in G-Sensor. It automatically triggers the Emergency Video Protection and Parking Mode features.

Set the sensitivity to automatically trigger these features with smaller or larger vibrations (feature can also be turned Off): **Feature Settings > G-Sensor Sensitivity**

3.8 Parking Monitoring

Enable Parking Monitoring for the dash cam to continue monitoring your vehicle for unusual impact or collision when the engine is turned off and parked. If a vibration is detected, the device will automatically turn on and begin recording. Approximately 20 seconds after the motion or vibration is finished, the device will automatically return to monitoring mode. All recordings are automatically protected from being overwritten.

Enable/disable feature: **Feature Settings > Parking Monitoring**

Please note: When protection space (30% TF card capacity) is full, The protected files will be overwritten with newly recorded protected files

3.9 Taking a Snapshot

1. If the device is recording, short press the 'OK/REC' button (6) to stop and enter Standby Mode.
2. Short press the 'Up' button (4) to enter Photo Mode.
3. Press the 'Up' button (4) to take a snapshot.

3.10 Playback Videos & Photos

1. If the device is recording, short press the 'OK/REC' button (6) to stop and enter Standby Mode.
2. Press the 'Down' button (5) to enter Playback Mode.

3. Press the 'Up' and 'Down' buttons (4 & 5) to select between Normal Video, Emergency Video or Photo. Press the 'OK/REC' button (6) to select or press the 'ESC/Menu' button (3) to return to standby mode.
4. Press the 'Up' and 'Down' buttons (4 & 5) to choose the file to preview and 'OK/REC' button (6) to select.
5. Press the 'OK/REC' button (6) to preview the file.
6. Press the 'ESC/Menu' button (3) to return to the playlist menu.

3.11 Managing Video & Photo Files

1. Go to the Playlist menu (see 3.10).
2. Navigate to the file you wish to manage and press the 'OK/REC' button (6) to select.
3. Press the 'Up' button (4) to delete the file.
4. Press the 'Up' and 'Down' buttons (4 & 5) to select between Yes and No.
5. Use the 'OK/REC' button (6) to confirm choice.



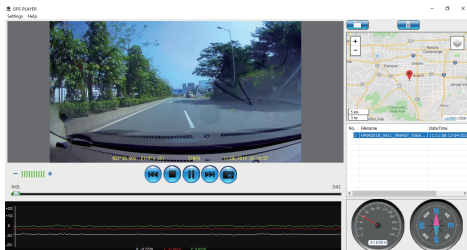
WARNING:

Deleted files cannot be recovered. Please ensure you backup important files before deleting them.

3.12 GPS

Integrated into the car mount suction cup is a GPS receiver which can pinpoint the location of your car dash cam anywhere on Earth. Video recordings include GPS tracking data which records location, speed, time and other variables that can be viewed on a GPS Multimedia Player.

1. Ensure the car mount USB cable is plugged into the car dash cams' USB connector to enable GPS tracking.
2. Go to <http://zeroedgetechnology.com/downloads/> to download the compatible GPS Multimedia Player.
3. Install GPS Multimedia Player on your laptop or computer.
4. Run the program and click 'Open File' to search and playback a video recording.



Note:

- GPS Multimedia Player compatible with Microsoft Windows and Apple Mac.
- GPS tracking data may not be viewable using other GPS Players.
- Car dash cam videos can be played from the SD card or from the car dash cam when connected to a computer via the USB port.

4 Menu Overview

Menu	Feature	Description	Available option
General Settings	Resolution	Set the resolution of the videos to be recorded.	Front camera and rear camera connected: 1080P30, 1080P30 Front camera only: 2560x1440P 30 fps 2304x1296P 30 fps 1920x1080P 60 fps 1920x1080P 30 fps 1280x720P 120 fps 1280x720P 60 fps 1280x720P 30 fps
	Screen Display	Sets the screen display	Front Camera, Rear Camera, PIP
	Loop Recording	Set the duration of each video file recorded to the memory card (see 3.4).	1 min / 2 mins / 3 mins
	Voice Setup	Enable/disable audio recording.	On / Off
	Exposure	Set the dash cam exposure	+2.0, +5/3, +4/3, +1.0, +2/3, +1/3, +0.0, -1/3, -2/3, -1.0, -4/3, -5/3, -2.0
	Stamp Setup	Add/remove a date and time stamp, Driver ID, and Logo stamp visible on saved video recordings.	Date Stamp On / Off, Driver ID Setting On / Off, Logo Stamp On / Off
	Language	Set dash cam language	English, French, German, Portuguese, Spanish, Italian
	Time Setup	Set the date/time (see 2.5).	YYYY / DD / MM / GMT HH : MM : SS
	Driver ID Setting	Input Driver ID setting	
	Button Beep	Enable/Disable Key Tone	On / Off

Menu	Feature	Description	Available option
General Settings	Auto Power Off	Set the duration for Auto Power Off	1 min / 3 mins / 5 mins / Off
	LCD Auto Off	Set the duration for LCD Auto Off	1 min / 3 mins / Off
	WDR	Enable/Disable Wide Dynamic Range	On / Off
	Frequency	Change frequency	50Hz / 60Hz
	Format	Format the micro SD card	OK / Return
	Default	Restore the car dash cam to default settings	OK / Return
	Version Info	Displays firmware version	
Feature Settings	Driver fatigue alarm	Set the fatigue alarm	1 Hour, 2 Hours, 4 Hours, Off
	Remind lights	Enable/Disable remind light	On / Off
	Motion Detect	Enable/Disable the motion detection feature	On / Off
	Parking Monitoring	Enable/Disable to protect your vehicle from hit-and-run incidents when the engine is off (see 3.8).	On/Off
	G-Sensor Sensitivity	Adjust the light G-Sensor Sensitivity	Off / High / Normal / Low

5 FAQs

Where should I place the dash cam?

- We recommend that you mount the car dash cam as close to the center of the windshield as possible. This should neither distract the driver nor block the drivers view (see 2.4).

Why does the dash cam stop recording after some time?

- If motion detection is enabled, the dash cam will automatically stop recording when no movements is detected for more than 15 seconds (see 3.6).
- Your micro SD card may be full and need to be formatted before using again. 1080P HD videos are big in size and G-sensor locked videos cannot be erased automatically. We recommend formatting your memory card every 14 days.

Why do you recommend Class 10 micro SD card or above?

- 1080P HD video has a bigger data flow and hence requires a micro SD card with faster writing speed. If memory cards below Class 10 are used, they may cause the dash cam to freeze or other related video recording/erasing issues.

How do I turn off audio during recording?

- To turn off the Audio Recording, short press the 'Down' button (5) during recording. (Please note: this does not interrupt the video recording).

How long will my battery last after a full charge?

- The dash cam battery usually takes 2-3 hours to fully charge. This can happen simultaneously whilst the dash cam is plugged into your car and recording. The battery can last 15 mins on a full charge depending on the model and environmental temperature.

How do I record videos?

- All dash cams are programmed to automatically record when there is power connected and a memory card inserted. When the engine is turned off, or power is disconnected, the dash cam will stop recording approximately after 3-10 secs. Manually start/stop recording by pressing the 'OK/Rec' button (6).

6 Customer Support

For customer support inquiries please contact via Email:
support@z-edge.com
Or visit our official website: www.z-edge.com



@zeroedgeGA
facebook.com/zeroedgeGA/



@zeroedgeGA
pinterest.com/zeroedgeGA



@zeroedgeGA
twitter.com/zeroedgeGA



@zeroedge
youtube.com/zeroedge

Follow us to get the latest updates, your opinion is important to us!

7 Warranty

Thank you for choosing Z-EDGE. Your satisfaction is always our first priority.

All Z-Edge customers have a 30-day money back guarantee, to make sure your shopping experience is worry-free.

By default, the unit warranty-period is set to **12 months** from the unit-shipped date.

You can be corrected to **18 months** by register your product in our official website.

Product Registration URL:

www.z-edge.com/pages/register

8 Product Specifications

Item	Description
Image Sensor	CMOS sensor
Effective Pixels	2560x1440P
Storage Media	Supports Micro SDXC, up to 256GB
LCD Display	2.7" LCD color TFT
Lens	Wide Angle Fixed Focus lens F2.0
Focus Range	1.5m~Infinity
Movie Clip	Resolution: Front camera and rear camera connected: 1920x1080P 30fps + 1920x1080P 30fps Front camera only: 2560x1440P 30fps 2304x1296P 30fps 1920x1080P 60fps 1920x1080P 30fps 1280x720P 120fps 1280x720P 60fps 1280x720P 30fps
	MP4
Still Image (Photo Mode)	Sensor Resolution: 4032x3024 (12M)
	JPEG
G-Sensor	Yes
Microphone	Yes
Speaker	Yes
Interface	Micro USB x1, Mini USB x1
Battery	Internal Li-ion battery rechargeable (This battery is NOT replaceable)

Item	Description
Operating Temperature	-10 to 60°C / 14 to 140°F
Storage Temperature	-20 to 70°C / -4 to 158°F
Dimensions	Front camera: 3.82 inch x 1.97 inch x 1.28 inch (97mm x 50mm x 32.5mm)(LxWxH)
	Rear camera: 2.1 inch x 1.6 inch x 1.3 inch (54.5 mm x 40mm x 32mm)(LxWxH)
Weight	Front camera: 3.0oz/85g Rear camera: 1.4oz / 40g
Car Charger	INPUT: DC 12-24V, OUTPUT: DC 5V 2.4A
GPS Logger	Built-in

FCC Statement

This equipment has been tested and found to comply with the limits for a Class B digital device, pursuant to Part 15 of the FCC Rules. These limits are designed to provide reasonable protection against harmful interference in a residential installation. This equipment generates, uses and can radiate radio frequency energy and, if not installed and used in accordance with the instructions, may cause harmful interference to radio communications. However, there is no guarantee that interference will not occur in a particular installation. If this equipment does cause harmful interference to radio or television reception, which can be determined by turning the equipment off and on, the user is encouraged to try to correct the interference by one or more of the following measures:

- Reorient or relocate the receiving antenna.
- Increase the separation between the equipment and receiver.
- Connect the equipment into an outlet on a circuit different from that to which the receiver is connected.
- Consult the dealer or an experienced radio/TV technician for help.

This device complies with Part 15 of the FCC Rules. Its operation is subject to the following two conditions: (1) This device may not cause harmful interference, and (2) this device must accept any interference received, including interference that may cause undesired operation.

FCC Caution: Any changes or modifications not expressly approved by the party responsible for compliance could void the user's authority to operate this equipment.



www.z-edge.com
Email: support@z-edge.com
Z3DZ21UM-03