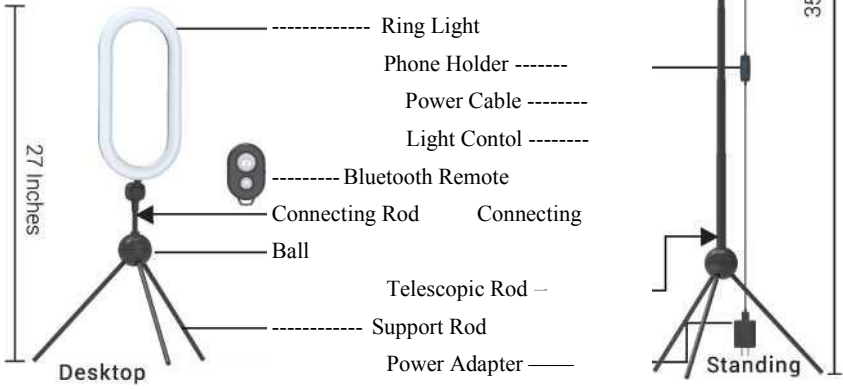


PACKAGE INCLUDES

1x Ring Light with Cable
1x AC Adapter
1x Connecting Ball 1x Connecting
Rod 1x Telescopic Rod 3x Support
Rod
1 x Tripod Mount Phone Holder
1 x Remote Shutter with Battery 1x
User Manual

PRODUCT INTRODUCTION



Two Methods Of Use

LIGHT CONTROL

- 1.Connect the USB cord to adaptor and turn the power on.
- 2.Press "to turn the light on.
- 3.Press "•B" to choose white light, blended light and natural light.
- 4.Press "■9" o " to adjust the brightness.



REMOTE SHUTTER

- 1.turn on the remote. The light indicator turns blue and keeps blinking.
- 2.turn on your Bluetooth on your phone and find device named *AB Shutter3" to pair with it. The blue light turns off after successful connection.
- 3.Press "CAMERA 360 IOS" or "ANDROID" to take photo or start/end video.

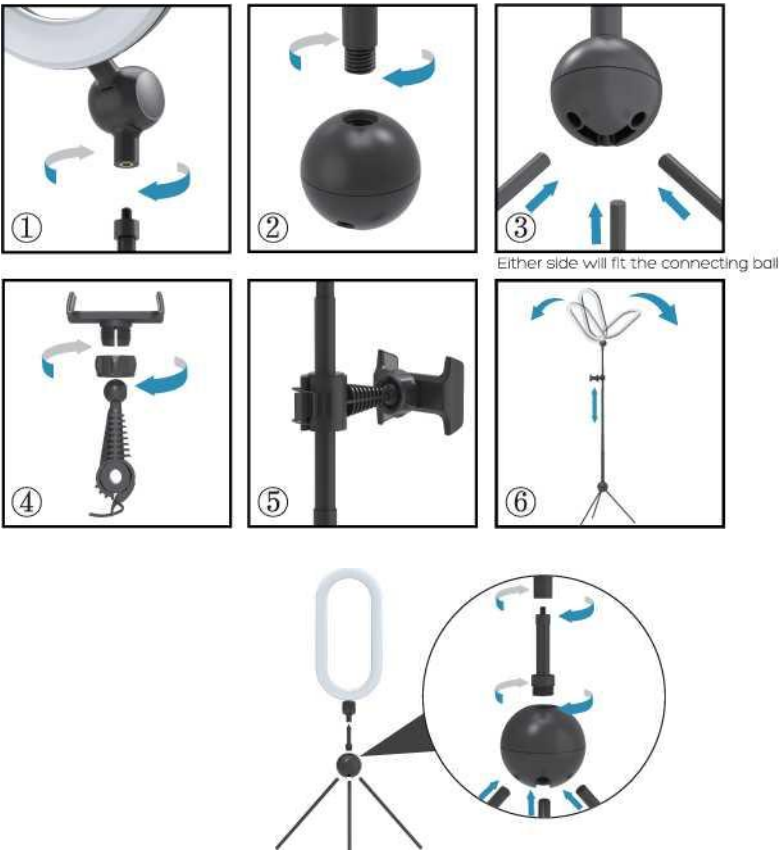
QUICK START

Please install the ring light in the following order.

Kindly Note:

For installation video or any other information needed, [please contact us via service-happycard@hotmail.com](mailto:service-happycard@hotmail.com)

1. Screw the ring light clockwise into the telescopic rod.
2. Screw the telescopic rod with ring light clockwise into the connecting ball.
3. Install the three support rods into the connecting ball.
4. Set up the phone holder with accessories, loosen the nut, put the ball through it, then tighten it.
5. Install the phone holder onto the telescopic rod.
- >6. Choose the height and perfect angle that you want.
(The telescopic rod can be directly stretched to the ideal height without twisting or any buckles, which is simple and durable)



To have a low profile desktop ring light, just use the connecting rod included to replace the telescopic rod.

SPECIFICATIONS

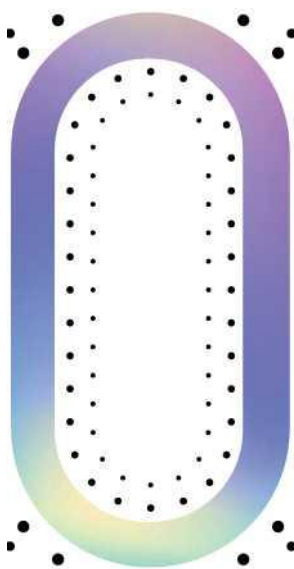
Product Name	Ring Light with Tripod Stand & Phone Holder
Ring Light Size	14 Inches x 7 Inches
LED Model	2835
Light Efficiency	10W
Brightness	1,500LM
Index	>90
Color Temperature	3,500K-6,000K
Input for Light	5V 2A
Output for Adapter	5V 3A
Material	Aluminum + ABS
Power Cable Length	78.74 Inches
Tripod Height with Connecting Rod	13 Inches
Tripod Height with Telescopic Rod	21-63 Inches
Battery in Bluetooth Remote	CR 2032

GUARANTEE

1. With 30 days of item arrival, please email us (service-happycard@hotmail.com) with your order ID to initiate your 12-Month Warranty and Lifetime Support.
2. This item has been checked for accuracy prior to leaving the factory and has a guarantee against any defect in either workmanship or materials for a period of 1 year.
3. If in any case, you are not 100% happy with the item received, would you please contact us first and give us a chance to make it right for you? All of our products are covered by warranty and we will do our best to address any of your concerns.

QIAYA
—YOU ARE BEAUTIFUL—

03 PLUS



QIAYA
Ring Light with Stand User Manual

Caution: The user is cautioned that changes or modifications not expressly approved by the party responsible for compliance could void the user's authority to operate the equipment.

This device complies with Part 15 of the FCC Rules. Operation is subject to the following two conditions: (1) this device may not cause harmful interference, and (2) this device must accept any interference received, including interference that may cause undesired operation.

NOTE: This equipment has been tested and found to comply with the limits for a Class B digital device, pursuant to Part 15 of the FCC Rules. These limits are designed to provide reasonable protection against harmful interference in a residential installation. This equipment generates, uses and can radiate radio frequency energy and, if not installed and used in accordance with the instructions, may cause harmful interference to radio communications. However, there is no guarantee that interference will not occur in a particular installation.

If this equipment does cause harmful interference to radio or television reception, which can be determined by turning the equipment off and on, the user is encouraged to try to correct the interference by one or more of the following measures:

- Reorient or relocate the receiving antenna.
- Increase the separation between the equipment and receiver.
- Connect the equipment into an outlet on a circuit different from that to which the receiver is connected.
- Consult the dealer or an experienced radio/TV technician for help.

FCC Radiation Exposure Statement

This equipment complies with FCC radiation exposure limits set forth for an uncontrolled environment.

This transmitter must not be co-located or operating in conjunction with any other antenna or transmitter.