



Foldable 3-in-1 wireless charger

Manual B-27

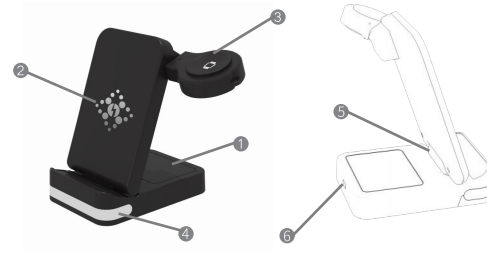
Foreword

Dear users, thank you for purchasing our products. In order to learn more about the product. Please read this manual carefully before use. Have a nice experience.

Product parts and their descriptions

Foldable 3-in-1 wireless charger

- | | |
|-----------------------------|----------------------|
| ① Headphone induction area | ④ LED light |
| ② Mobile phone sensing area | ⑤ foldable card slot |
| ③ Watch induction area | ⑥ TYPE-C power port |



Type-C charging cable



Ambient light description

According to customer needs, you can freely choose to turn on/off the light.

Use Ambient Temperature Instructions

For normal use, please keep it below the room temperature of 26 degrees; when the room temperature exceeds 28 degrees, the watch may not be charged. When fully charged, the charging time of the mobile phone will be extended.

How to solve abnormal charging

Please confirm whether your mobile phone has wireless charging function before use; Check if the phone deviates from the wireless inductive charging area of the charger; Whether to use a non-metallic protective case for charging the mobile phone, and the thickness of the protective case is not recommended more than 4 mm; When a metal object rotates in the charging area, the charger will automatically identify and power off Protect.

When the charger temperature is too high, the protection will be automatically activated. Please unplug the power first, wait for the charger, Return to temperature before use.

Frequently Asked Questions

Why do wireless charging and induction products generate heat when charging? During the charging process, there will be a certain loss of magnetoelectric conversion, and this part of the loss will be converted into heat, it is normal for the phone and charger to generate heat.

Suggest: When the device is fully charged, please disconnect the charging in time to avoid long-term cycle charging, resulting in

The product and charger continue to heat up; When the mobile phone is charging, please close the mobile phone background software to run the software.

Precautions

It can only be used indoors or in a dry environment, avoid placing it in high temperature, humidity, strong static electricity and Place or use in the environment of strong magnetic field; For your safety, please do not plug and unplug electrical appliances with wet hands; Keep out of reach of babies and children; Do not use if the product gets into water or is stuck with dirt or dust; Non-professionals are not allowed to disassemble and repair without authorization.

Product parameters

Model: B-27
 Input: 9V---2A, 12V---3A
 Mobile phone output: 15W Max
 Headphone output: 5W
 Watch output: 0.5W-2W
 Material: ABS+PC
 Color: black and white

Packing list

Wireless charging stand	x 1
TYPE-C Charging Cable	x 1
Manual	x 1

FCC Statement

This device complies with part 15 of the FCC Rules. Operation is subject to the following two conditions: (1) This device may not cause harmful interference, and (2) this device must accept any interference received, including interference that may cause undesired operation.

Note: This equipment has been tested and found to comply with the limits for a Class B digital device, pursuant to part 15 of the FCC Rules. These limits are designed to provide reasonable protection against harmful interference in a residential installation. This equipment generates, uses and can radiate radio frequency energy and, if not installed and used in accordance with the instructions, may cause harmful interference to radio communications. However, there is no guarantee that interference will not occur in a particular installation. If this equipment does cause harmful interference to radio or television reception, which can be determined by turning the equipment off and on, the user is encouraged to try to correct the interference by one or more of the following measures:

- Reorient or relocate the receiving antenna.
- Increase the separation between the equipment and receiver.
- Connect the equipment into an outlet on a circuit different from that to which the receiver is connected.
- Consult the dealer or an experienced radio/TV technician for help.

Note: The Grantee is not responsible for any changes or modifications not expressly approved by the party responsible for compliance. such modifications could void the user's authority to operate the equipment.

The device has been evaluated to meet general RF exposure requirement. To maintain compliance with FCC's RF exposure guidelines, the distance must be at least 20 cm between the radiator and your body, and fully supported by the operating and installation configurations of the transmitter and its antenna(s).