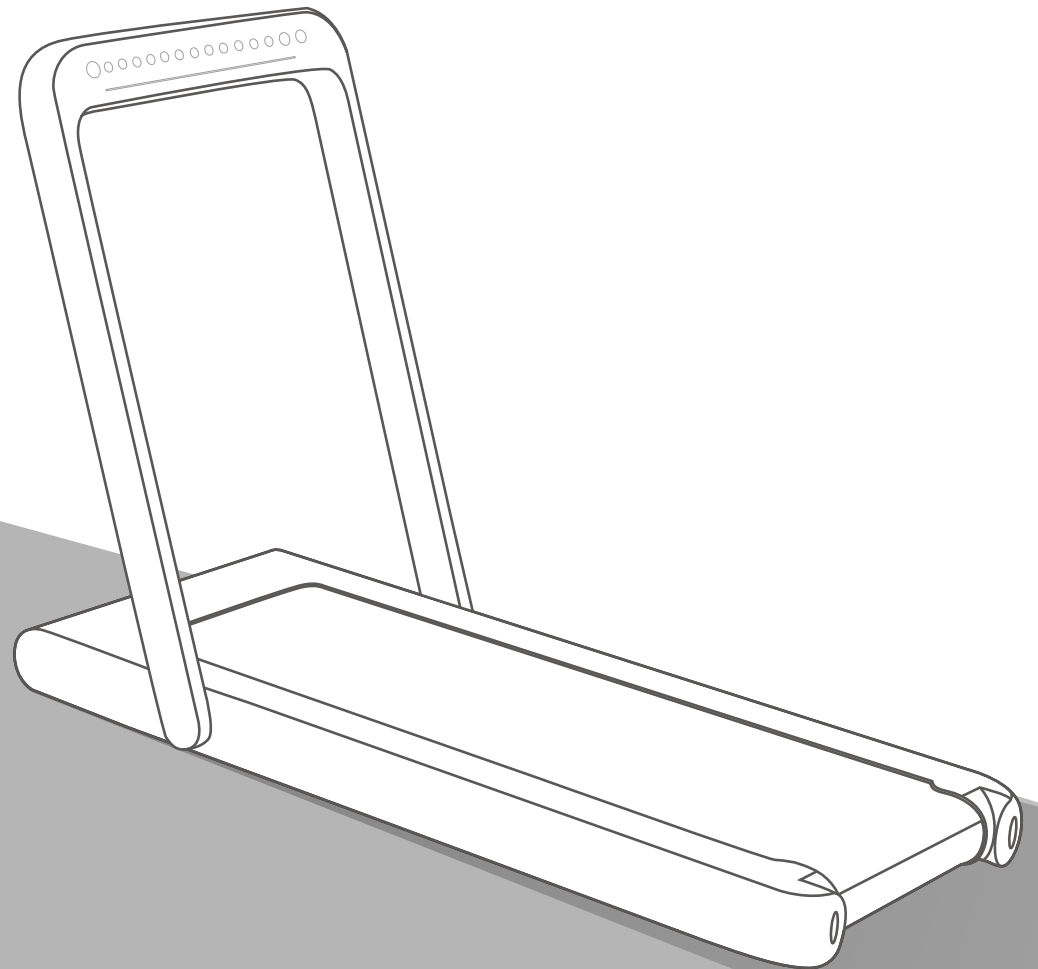


Product Instruction manual

TREADMILL



Model: T4000

Content

Safety precautions Warning instructions	—	02
Exploded-Views	_____	06
Details of Exploded-Views	_____	07
Product introductions	_____	08
Installation procedure	_____	10
Method for replacing fuse	_____	11
Folding handle strength adjustment	_____	11
Sports advice and guidelines	_____	12
Operating Instructions	_____	14
Common failures and processing method	—	16
Product maintenance	_____	17
Service commitment	_____	18

1. Safety precautions Warning instructions

NOTE: Please read the instruction carefully before using and pay attention to the following safety precautions.

- ★ The treadmill is suitable to be placed indoors, to avoid moisture, splash water on the treadmill and place any foreign matter.
- ★ Please wear appropriate sportswear and sports shoes before exercise. Don't run barefoot on the treadmill, and keep stretching body.
- ★ The power plug must be connected reliably grounded, and the socket must have a dedicated circuit to avoid sharing with other electrical equipment.
- ★ Children should keep away from the machine to avoid accidents.
- ★ It is necessary to avoid overload operation for a long time, otherwise the motor and controller will be damaged. The bearing, running belt and running plate will be worn and aged, please keep regular maintenance.
- ★ Reduce indoor dust, maintain a certain indoor humidity, avoid strong static electricity, otherwise it may interfere with the electronic meter. Keep controller normally working.
- ★ Please turn off the treadmill power after the use of sports.
- ★ Keep the clean and fresh air in the room when you use the treadmill
- ★ Please fasten the safety lock cable clip on the clothes when exercising in case of emergency.
- ★ Please stop exercising and consult your doctor if you feel uncomfortable and abnormal during using.
- ★ Please put silicone oil in a place out of the reach of children to avoid serious consequences caused by accidental ingestion after using the silicone oil.

Warning: Please observe the following regulations in order to reduce accidents or injuries to others.

- ★ Please check your clothing or zipped before using the treadmill.
- ★ Don't wear clothes that can get caught on the treadmill.
- ★ Do not place the power cord near a hot object.
- ★ Keep children away from the treadmill.
- ★ Don't use the treadmill out of the door.
- ★ The power must be cut off before moving treadmill.
- ★ Non-professional personnel shall not open the upper guard cover and the left and right rear housing without authorization.
- ★ This treadmill can only be used in circuit of 15A.
- ★ Only one person can exercise on the treadmill when the machine starts.
- ★ Please stop exercising immediately and consult a fitness instructor when you feel dizziness, chest pain, nausea or shortness of breath during exercise.

WARNING! ENFORCEMENT!

Please be sure to discuss with a professional doctor before using if you are receiving medical treatment from a doctor or the following patient.

- (1) Having back pain now or injury for leg, waist and neck in the past and the people who have problem with Leg (those with chronic diseases such as disc herniation, spondylolisthesis, cervical herniation)
 - (2) Having deformed sex arthritis, rheumatism, gout.
 - (3) Abnormal people with osteoporosis.
 - (4) Having circulatory system obstacle (disease of heart, blood-vessel, hypertension)
 - (5) Having difficulty in breathing.
 - (6) Using artificial pacemakers or implantable medical electronic devices.
 - (7) Having malignant tumors.
 - (8) Having thrombosis or serious dynamic environment tumor, acute environment tumor and other blood circulation disorders or a variety of skin infections and other symptoms.
 - (9) Having perceptual disabilities caused by diabetes and high peripheral circulation disorders.
 - (10) Having skin injuries.
 - (11) Having a high fever (38°C or above) due to illness and so on.
 - (12) Having abnormal dorsal bones or crooked dorsal bones.
 - (13) Having pregnancy or possible pregnancy or menstruation.
 - (14) Feeling abnormal and have to rest
 - (15) Poor physical condition obviously
 - (16) Users for rehabilitation purposes.
 - (17) Feeling uncomfortable in a certain region of the body except the above circumstances.
—It's likely to cause accident or poor health.
- ◆ Please stop using immediately and consult your doctor when you feel pain in your back, numbness in your legs, dizziness, abnormal heartbeats and other body aches that are different from normal or poor coordination or other abnormal feelings during exercise.
 - ◆ Do not allow children to use or play around the product.
—If not followed, there may be a risk of injury.
 - ◆ Do not allow children to play with this product for child protectors.
—If not followed, there may be a risk of injury.
 - ◆ Please make sure if there is person or pet around (rear, lower, front) during using or taking out product.

Prohibition

- ◆ Do not use in the state of shell cracked, detached (internal structure exposed) or weld detached.
—Otherwise, it's easy to cause accident or injuries.

- ◆ Do not jump up or down during exercise.
—It's likely to fall or cause injury.
- ◆ Do not use or keep in damp places such as outdoors or near the bathroom, or in places where water drops are caught.
- ◆ Do not use or keep in places with direct sunlight such as high-temperature places of around the stove and heating appliances or electric heating carpets.
—Otherwise, it's easy to cause electricity leakage, fire.
- ◆ Do not use when the power cord or plug is damaged or the socket is loose.
—Otherwise, it's easy to cause electric shock, short circuit and fire.
- ◆ Do not damage or forcibly bend or twist the power cord. At the same time, do not place heavy objects on it or not let the line be clamped.
—Otherwise, it's easy to cause fire or electric shock
- ◆ Do not use it with two or more people at the same time. Do not let the people around get close when using.
—Otherwise, it's easy to cause accident and injuries from falls.
- ◆ Do not use it if you can't express consciousness by yourself or operation.
—It's likely to occur accident or inquiry.

Do not disassemble the treadmill.

- ◆ Disassembly, repair or re-election are strictly prohibited
—There is a risk of injury due to mechanical failure

Avoid touching with water

- ◆ Do not spray water or other conductive liquid on main body or operation part.
—It may cause electric shock and fire.

Prohibition

- ◆ People who don't usually exercise shouldn't suddenly do strenuous exercise.
- ◆ Do not use after eating or when you are tired. Especially after exercising or when you are in an abnormal physical state.
—It may cause damage to health.
- ◆ This product is suitable for the home use, do not use in the school, the gymnasium and so on or for non-specific users.
—There would be injury risk.
- ◆ Do not use when eating, drinking, or other activities.
- ◆ Do not use it after drinking until you feel sluggish.
—It's easy to cause accident or injury.
- ◆ Do not use it with something hard in your pants pocket.
—It's easy to cause accident or injury.

- ◆ Do not use the power plug with needles, garbage or water.
 - It may cause electric shock, short circuit and fire.
- ◆ Do not pull out the power plug or switch the power switch to “off” during use.
 - It may cause injury.

Never use it with wet hands

- ◆ Do not pull out or insert the power plug with wet hands.
 - It’s likely to cause electric shock or injury

Pull out the power plug

- ◆ Please pull out the power plug from socket when you don’t use it.
 - Dust and moisture make it insulation deterioration and lead to electricity leakage and fire.
- ◆ Please be sure to pull the power plug from the socket during maintenance.
 - Failure to comply may result in electric shock or injury.
- ◆ Please stop using it if the device does not start or runs abnormally. Immediately pull out the power plug and entrust inspection and repair.
 - Failure to comply may result in electric shock or injury.
- ◆ Pull out the power plug immediately in case of power failure.
 - Otherwise it’s likely to occur accidents or injuries when the power restored.
- ◆ Do not hold the cable tight. Hold the power plug to pull out the plug.
 - Otherwise, it may cause short circuit, electric shock and fire.

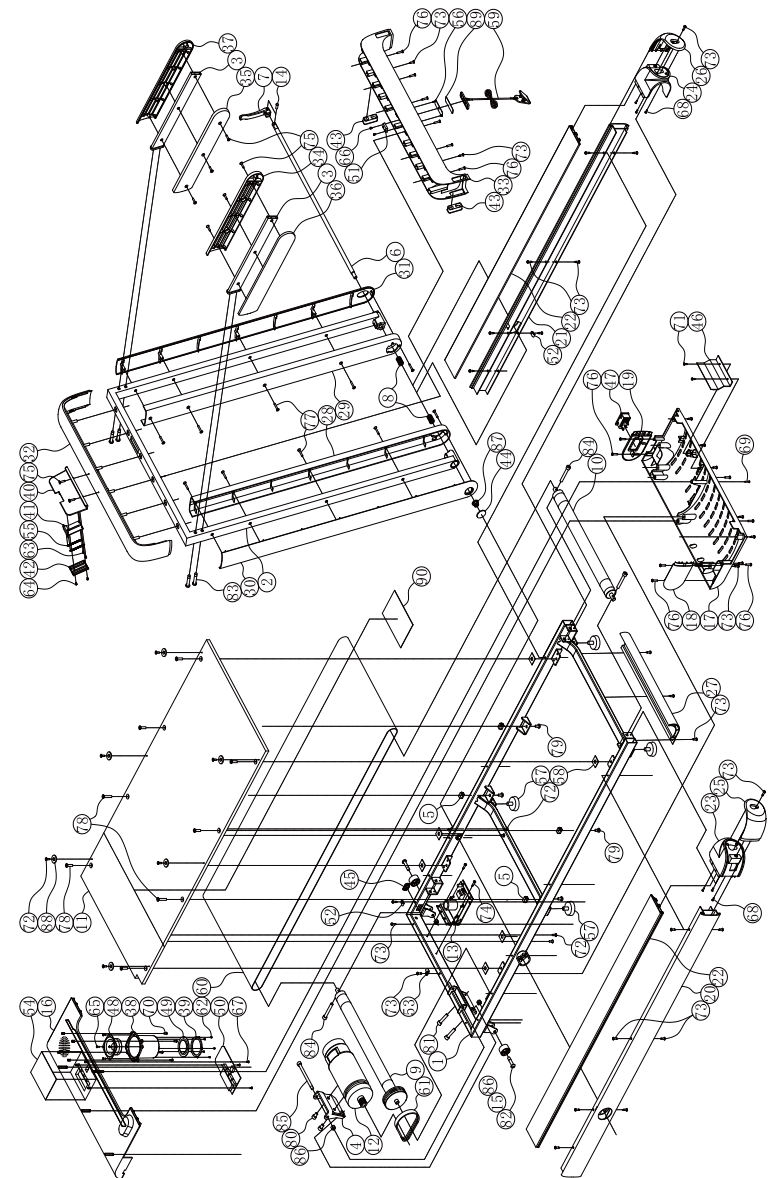
Grounding instructions

- ◆ The product must be grounded. Grounding provides the channel with the least resistance to current to minimize the risk of electric shock if the function of this machine does not work normally.
- ◆ This product is equipped with a grounded conductor and a plug for the device. The plug must be properly installed, grounded and plugged into an appropriate electrical outlet in accordance with local codes or regulations.

Dangerous

- ◆ There is a risk of electric shock if the device is not properly grounded. Please contact an electrician to check if the grounding of the product is correct, if the plug does not fit into the socket it can not be changed. Please inform a qualified electrician with the installation of a suitable socket.
- ◆ This product has a grounding plug. Make sure that the product is connected to an outlet of the same shape. this product can not be used with an adapter socket.

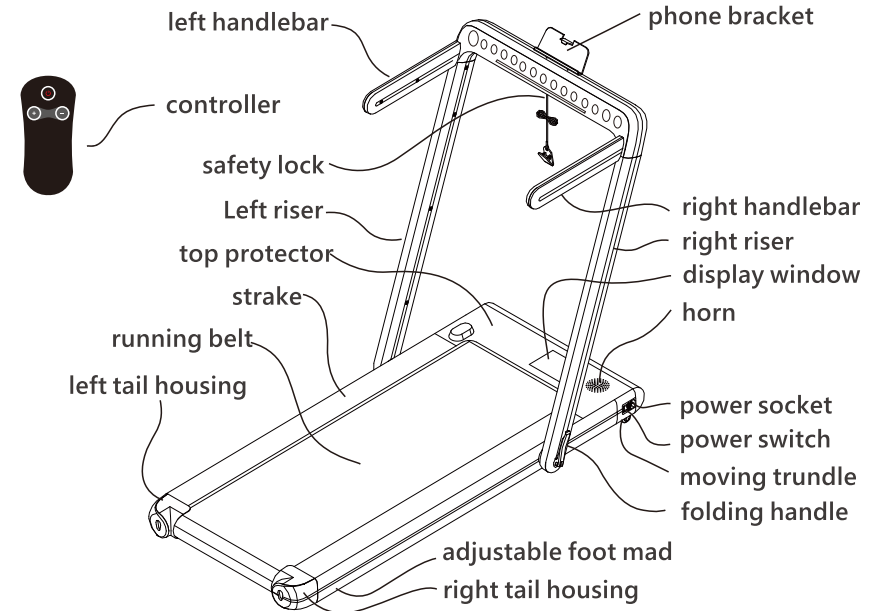
2, Exploded-Views



3、Details of Exploded-Views

NO.	Name	Qty.	NO.	Name	Qty.
1	Main frame welding parts	1	47	Power switch2.0	1
2	Riser welding parts	1	48	Horn	1
3	Handlebar welding parts	2	49	Bass membrane	1
4	Motor fixed housing	1	50	PCB panel	1
5	Ling shaped cushion	4	51	Sense block	1
6	Pull rod	1	52	3.2 wire clipper	2
7	Folding handle	1	53	6.4 wire clipper	1
8	Press spring	2	54	sticker on electronic meter	1
9	Front roller	1	55	Phone bracket pull spring	2
10	Rear roller	1	56	Safety lock flap	1
11	Running board	1	57	Adjustable feet pad	4
12	Motor	1	58	Running board EVA pad	4
13	Controller	1	59	Safety lock assembly parts	1
14	Rivet	1	60	Running belt	1
15	Moving wheels	2	61	Poly V-belt	1
16	Up protect cover	1	62	STF 2.2*4.5 bolts	5
17	Down protect cover	1	63	STF 2.2*8 bolts	2
18	Left side cover of protector	1	64	STF2.6*8 bolts	2
19	Right side cover of protector	1	65	STF2.6*9.5 bolts	4
20	Left tube	1	66	STF2.9*4.5 bolts	2
21	Right tube	1	67	STF2.9*6.5 bolts	3
22	Tube	2	68	STF2.9*9.5 bolts	6
23	Left tail housing	1	69	ST2.9*19 bolts	1
24	Right tail housing	1	70	STF3.3*9.5 bolts	4
25	Left tail housing cover	1	71	ST3.5*13 bolts	2
26	Right tail housing cover	1	72	ST4.2*16 bolts	6
27	Tail trim	1	73	ST4.2*16 bolts	31
28	Inner cover of left riser	1	74	ST4.2**19 bolts	2
29	Inner cover of right riser	1	75	ST4.2*22 bolts	8
30	Outer cover of left riser	1	76	ST4.2*22 bolts	13
31	Outer cover of right riser	1	77	ST4.2*30 bolts	10
32	Up cover of electronic meter	1	78	M8*25 bolts	8
33	Down cover of electronic meter	1	79	M8*10 bolts	4
34	Inner cover on left handle	1	80	M8*12 bolts	2
35	Inner cover on right handle	1	81	M8*35 bolts	2
36	Outer cover on left handle	1	82	M8*35-10 bolts	2
37	Outer cover on right handle	1	83	M8*45-10 bolts	4
38	Speaker shell	1	84	M8*55 bolts	3
39	Bass film fixer	1	85	M8*105-10 bolts	1
40	Phone bracket panel	1	86	M8 screws	3
41	Phone bracket splint	1	87	M10 screws	1
42	Phone bracket back panel	1	88	Side guide block	6
43	Riser square plug	4	89	Safety lock sticker	1
44	Riser round plug	1	90	EVA single-sided adhesive tape 30*435*1	1
45	Square spacer	1			
46	Anti-dust board	1			

4、Product introductions



packing list:

No.	Name	Qty.	Remark
1	Main body	1	
2	Left handlebar	1	
3	Right handlebar	1	
4	Spare parts package	1	See table

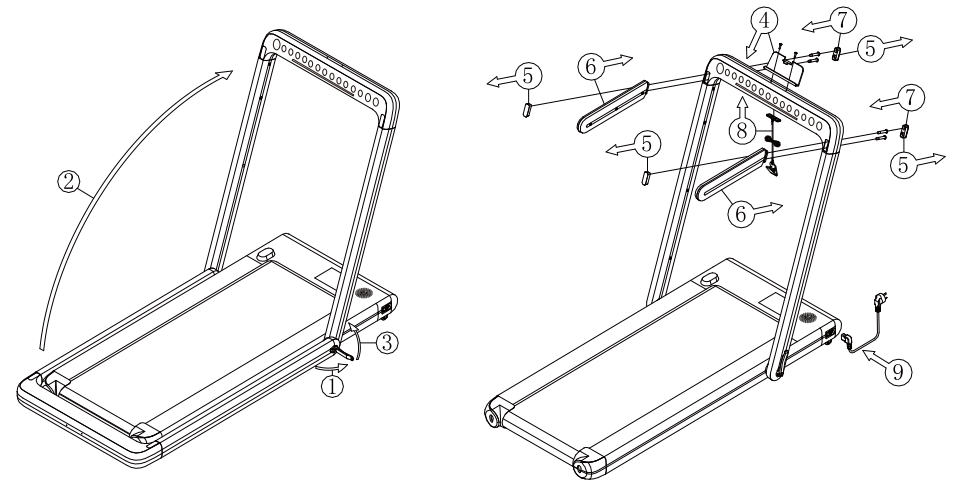
Technical Parameters

Working voltage	AC 110V 60Hz
Max load	120kg
outsize	Fold: 1425*685*112 mm
	unfold: 1335*685*1065 mm
running area	1100*400 mm
motor power	0.75HP
speed	1.0-12.0Km/h
control method	touch button controller
weight	35Kg
Function	walking pattern running pattern

Spare parts list

NO.	Name	Qty.	Remark
1	ST4.2*22 bolts	2	fix phone bracket
2	M8*45 bolts	4	fix left and right
3	5mm internal hexagonal wrench	1	others
4	6mm internal hexagonal wrench	1	adjust running belt
5	13-16 open wrench	1	others
6	15mm socket wrench	1	Folding handle force adjustment
7	power wire	1	
8	safety lock	1	
9	methyl silicone oil	2	
10	phone bracket	1	
11	controller	1	
12	manual ,Qualification certification	1	

5. Installation procedure



Put the main body on the carpet or cushion as shown in the picture after taking out from packing carton.

As shown in the step1 of the left picture.Open the folding handle in the direction shown in the picture.meanwhile the lower end of the riser will naturally expand to the two sides. Raise the riser upward to the upper limit position as shown in the step2 of the left picture.Press “folding handle” and locked riser as shown in the step3 of the left picture.

Fix “phone bracket” with two pieces ST4.2*22 bolts on riser beam as shown in the step4 of right picture.Cutout 4pieces “square rubber plugs” as shown in the step5 of right picture.insert left and right handlebar into the corresponding positions and lock them into the corresponding screw holes of the handlebar through the riser with two pieces M8*45 bolts.Put 2pieces “square rubber plugs” back into the previous square hole. And keep the remaining two pieces by yourself as shown in the step of 7 of right picture.

Put the “safety lock” into the corresponding position under the beam of the riser as shown in the step 8 of right picture.Insert the power cord into the socket of the power switch and install it.

Note:Please check again whether all bolts are locked after the assembly of this machine.