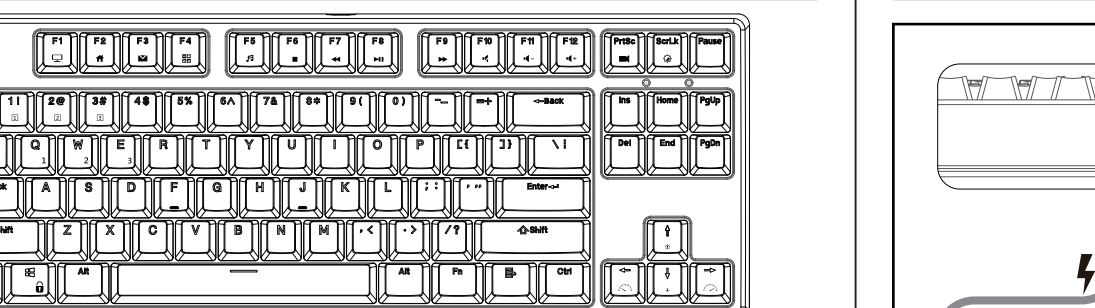


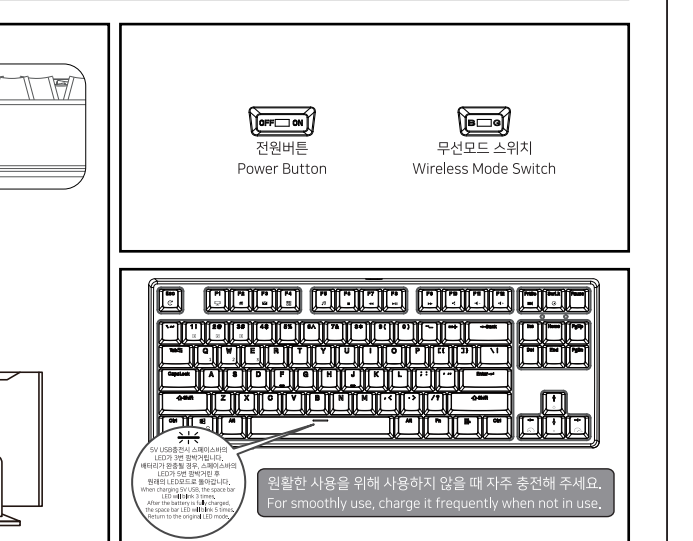


NINJA87PRO

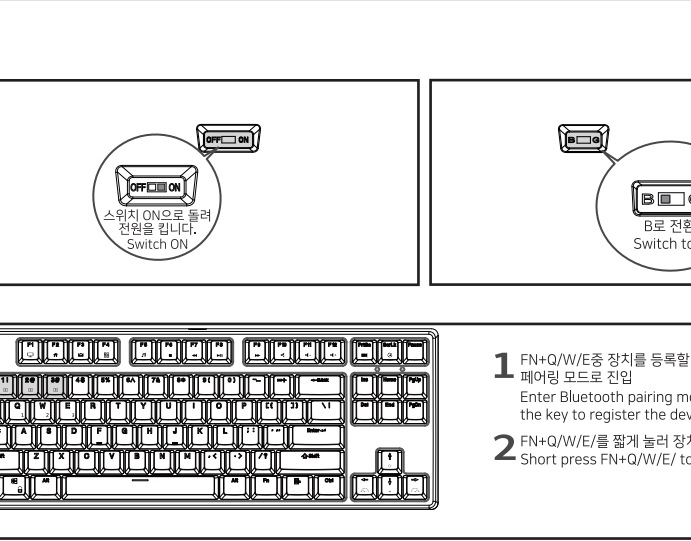


규격	364(L)×137(W)×40(H)±2	SIZE	364(L)×137(W)×40(H)±2	구성품	Components
키수	87 키	KEYS	87 keys	키보드 1ea	Keyboard 1ea
LED	단색/RGB	LED	Single/RGB	설명서 1ea	Manual 1ea
스위치	기계식 스위치(Cherry MX 계열)	SWITCH	mechanical switch (Cherry MX like)	키캡리무버 1ea	Keycap remover 1ea
버전	유선(USB)/무선	Connect	Wired(USB)/Bluetooth	수신기 1ea	Dongle 1ea
보증기간	사용자 과실이 아닌 제품 불량인 경우 12개월 무상 A/S.	GUARANTEE	12 months free A/S service in case of product defect, not the user's negligence.	USB Type-C 케이블 1ea	USB Type-C Cable 1ea

유선 모드 및 충전 Wired Mode & Charging

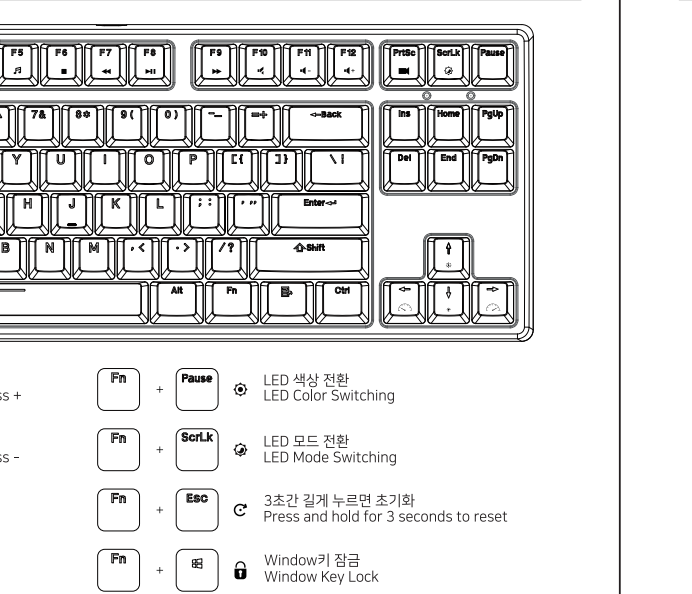


Bluetooth 모드 Bluetooth Mode

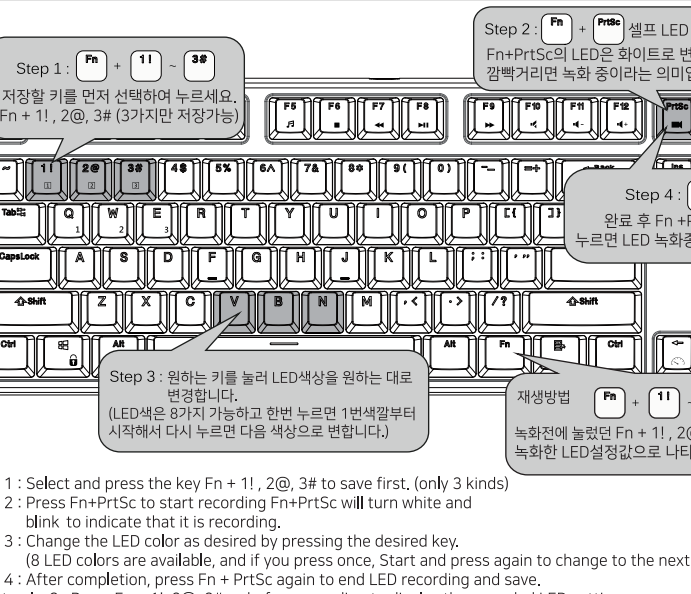


- FN+Q/W/E 중 정지를 등록할 키를 길게 눌러 블루투스 페어링 모드로 진입
Enter Bluetooth pairing mode by pressing and holding the key to register the device among FN+Q/W/E
- FN+Q/W/E 를 짧게 눌러 장치 전환
Short press FN+Q/W/E / to switch devices

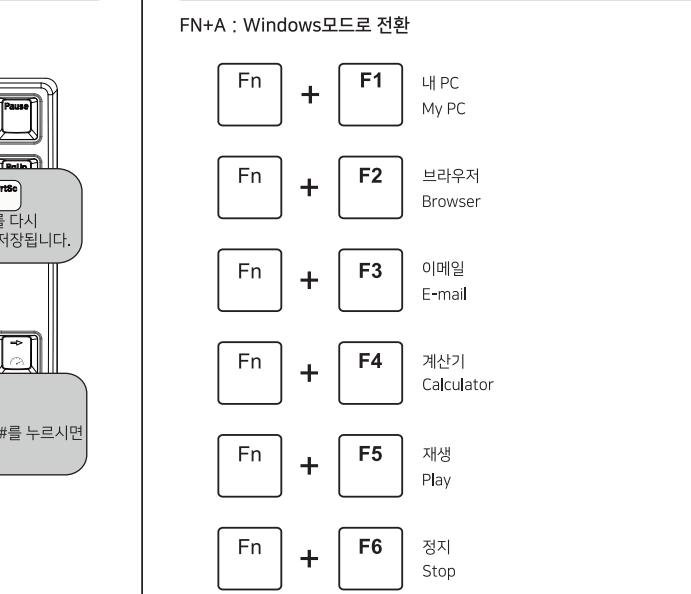
LED 조절 LED Control



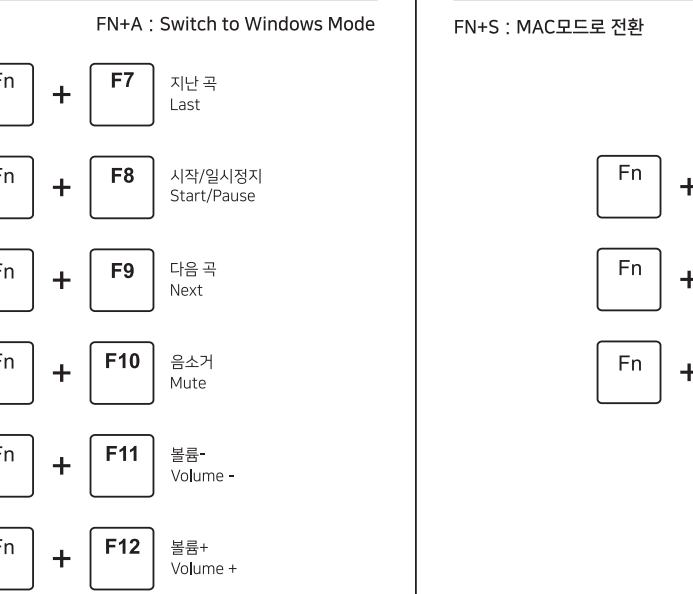
커스텀 LED 녹화 방법 Custom LED recording method



WINDOWS 멀티미디어 키 WINDOWS Multimedia Keys



MAC 멀티미디어 키 MAC Multimedia Keys



필요 사양 Required Specifications

- 블루투스 모드 Bluetooth Mode**
- 블루투스 모드 3.0, 블루투스 5.1 이상
 - PC: Windows® 7 이상
 - Mac: macOS X 10.6 Snow Leopard 이상
 - ios : 모든 iPad/ 아이폰5 이상
 - Android: 5.0 이상
- Bluetooth Mode**
- More than Bluetooth Mode 3.0, Bluetooth 5.1
 - PC: More than Windows® 7
 - Mac: More than macOS X 10.6 Snow Leopard
 - ios : All of iPad/ More than iPhone 5
 - Android: More than 5.0

소프트웨어 설치 시 인터넷 연결이 필요합니다.
Internet connection required for software installation.
소프트웨어 다운로드 : <https://www.monstargear.co.kr/59>
Software download : <https://www.monstargear.com/75>

Monstar Corp.
329, Hakjang-ro, Sasang-gu,
Busan, Republic of Korea
몬스타중심회사
부산광역시 사상구 학장로 329
<https://www.monstargear.co.kr/>

This device complies with Part 15 of the FCC Rules. Operation is subject to the following two conditions: (1) this device may not cause harmful interference, and (2) this device must accept any interference received, including interference that may cause undesired operation

NOTE: This equipment has been tested and found to comply with the limits for a Class B digital device, pursuant to Part 15 of the FCC Rules. These limits are designed to provide reasonable protection against harmful interference in a residential installation. This equipment generates, uses and can radiate radio frequency energy and, if not installed and used in accordance with the instructions, may cause harmful interference to radio communications. However, there is no guarantee that

interference will not occur in a particular installation.

If this equipment does cause harmful interference to radio or television reception, which can be determined by turning the equipment off and on, the user is encouraged to try to correct the interference by one or more of the following measures:

- Reorient or relocate the receiving antenna.
- Increase the separation between the equipment and receiver.
- Connect the equipment into an outlet on a circuit different from that to which the receiver is connected.
- Consult the dealer or an experienced radio/TV technician for help.

Warning: changes or modifications not expressly approved by the party responsible for compliance could void the user's authority to operate the equipment

The device has been evaluated to meet general RF exposure requirements, the device can be used in portable exposure conditions without restriction