

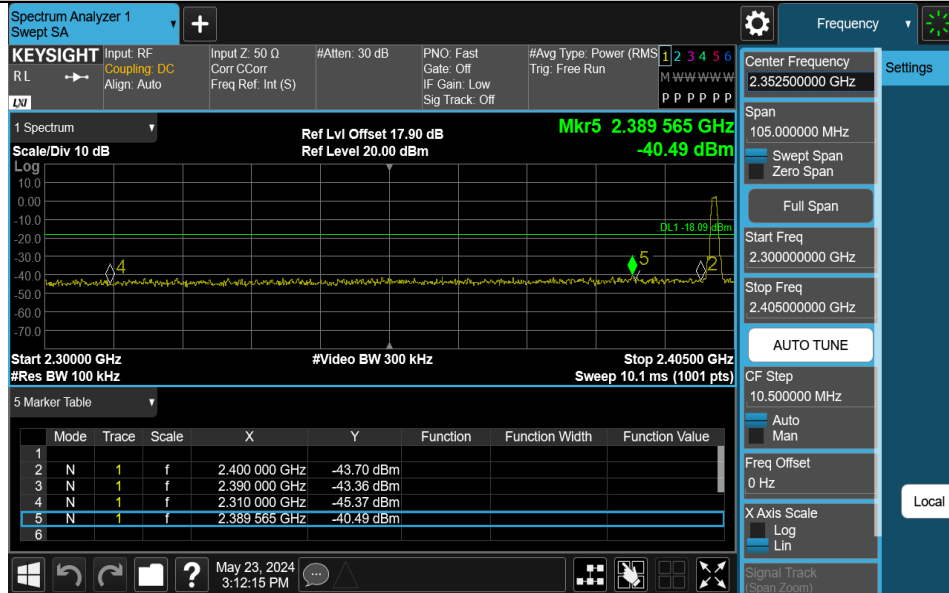
## Appendix E: Band edge measurements

## Test Result

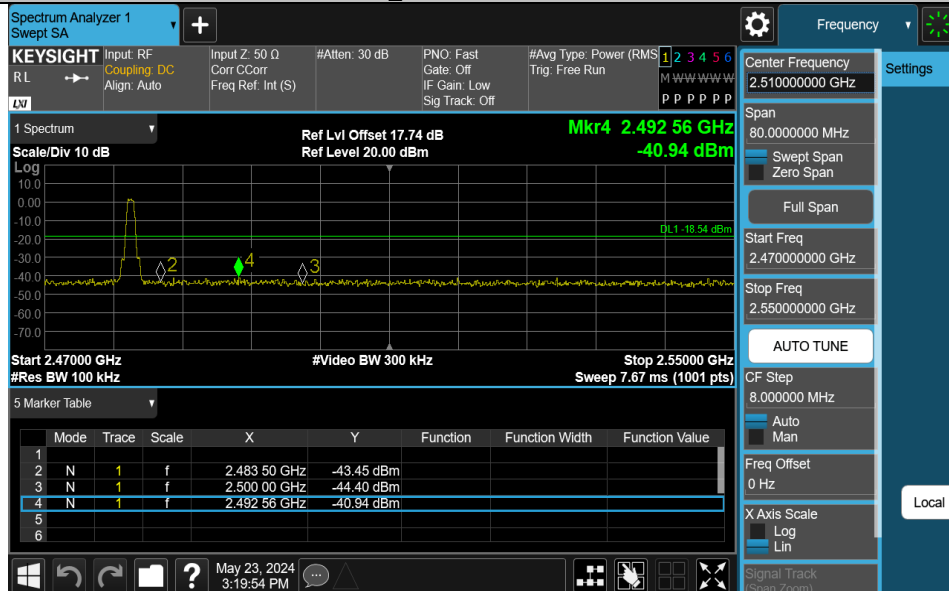
Test Mode	Antenna	ChName	Frequency[MHz]	RefLevel[dBm]	Result[dBm]	Limit[dBm]	Verdict
BLE_1M	Ant1	Low	2402	1.91	-40.49	≤-18.09	PASS
BLE_1M	Ant1	High	2480	1.46	-40.94	≤-18.54	PASS
BLE_2M	Ant1	Low	2402	0.34	-33.68	≤-19.66	PASS
BLE_2M	Ant1	High	2480	-0.25	-41.04	≤-20.25	PASS

### Test Graphs

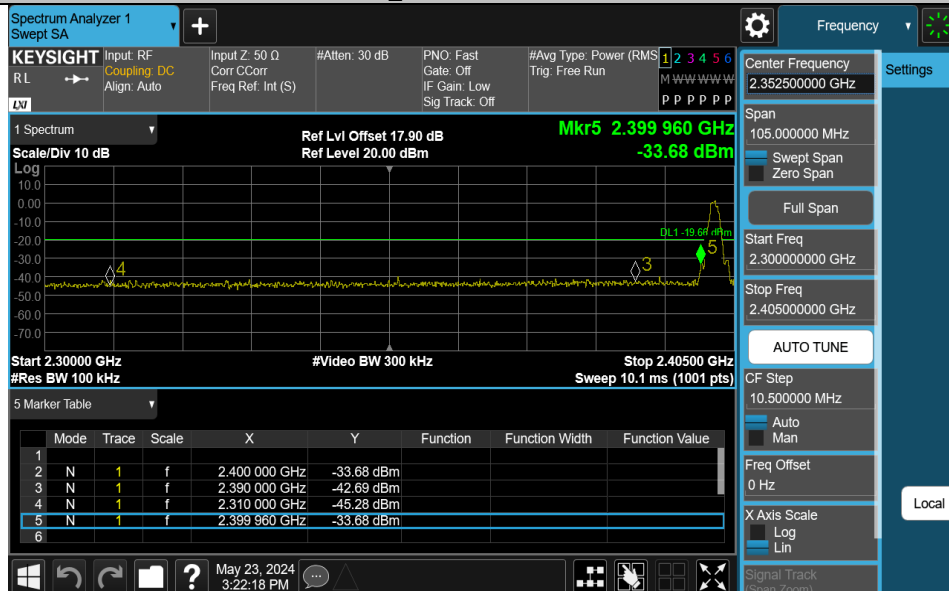
#### BLE\_1M-Ant1-2402-PASS



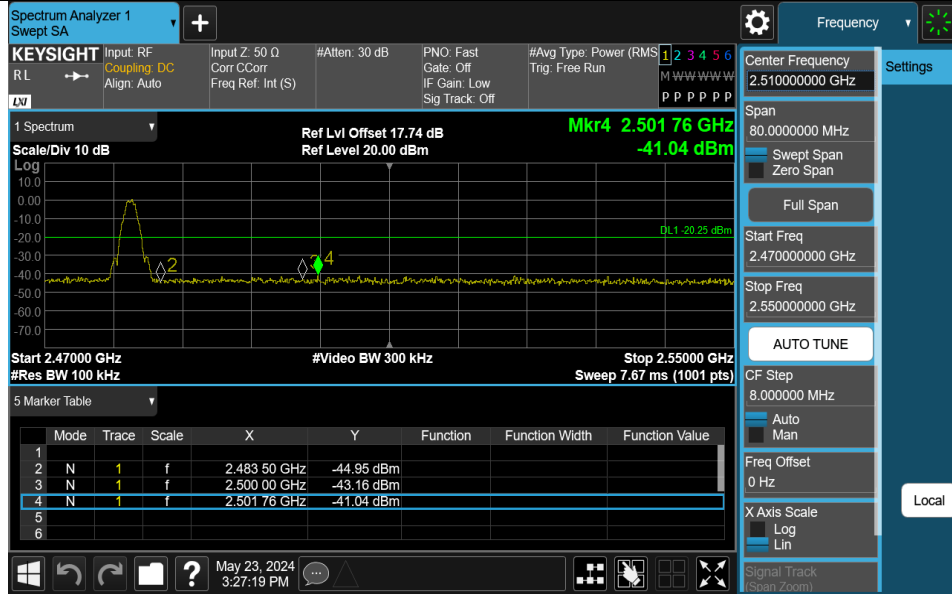
#### BLE\_1M-Ant1-2480-PASS



#### BLE\_2M-Ant1-2402-PASS



BLE\_2M-Ant1-2480-PASS

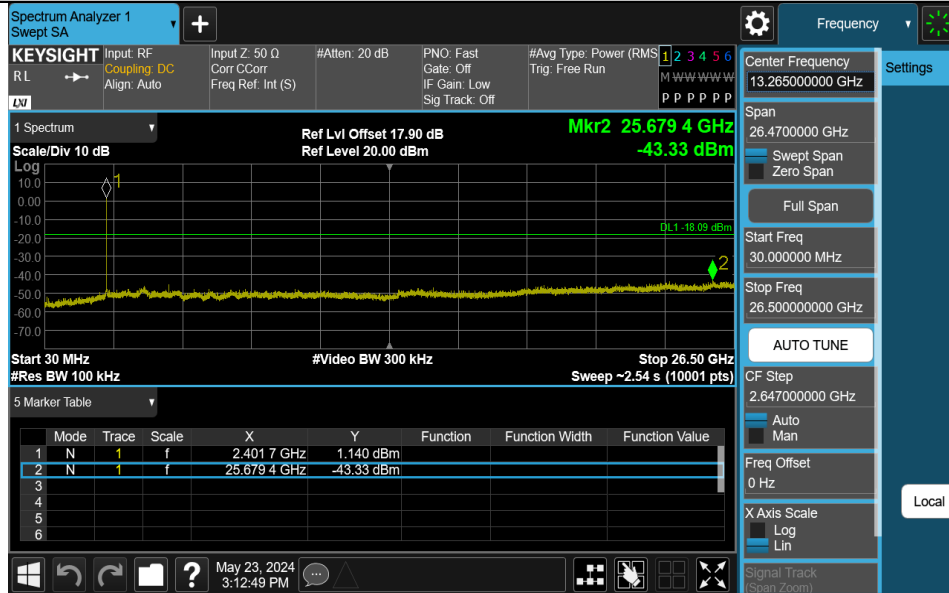


## Appendix F: Conducted Spurious Emission Test Result

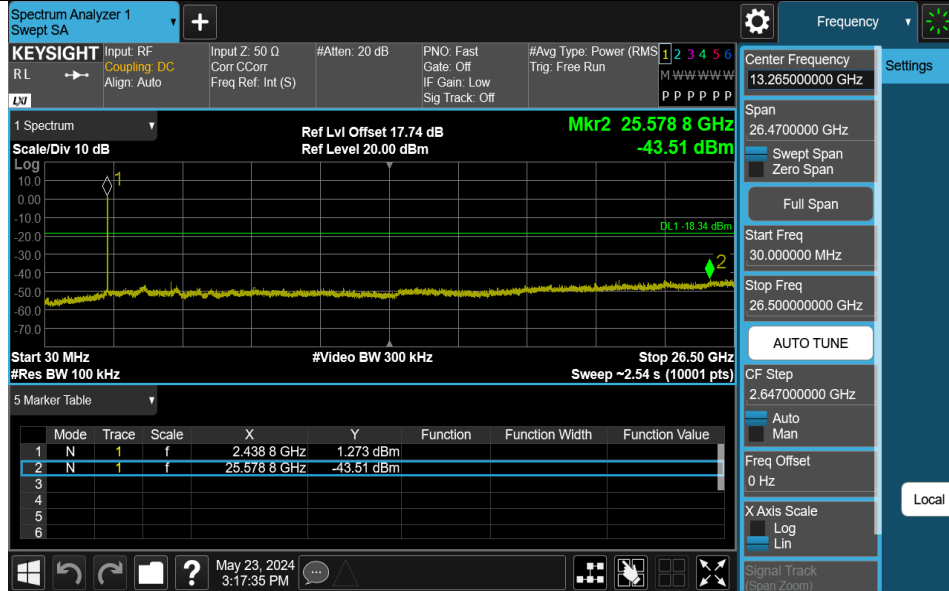
Test Mode	Antenna	Frequency[MHz]	FreqRange [MHz]	RefLevel [dBm]	Result[dBm]	Limit[dBm]	Verdict
BLE_1M	Ant1	2402	30~26500	1.91	-43.33	≤-18.09	PASS
BLE_1M	Ant1	2440	30~26500	1.66	-43.51	≤-18.34	PASS
BLE_1M	Ant1	2480	30~26500	1.46	-42.75	≤-18.54	PASS
BLE_2M	Ant1	2402	30~26500	0.34	-43.72	≤-19.66	PASS
BLE_2M	Ant1	2440	30~26500	0.00	-43.2	≤-20	PASS
BLE_2M	Ant1	2480	30~26500	-0.25	-43.15	≤-20.25	PASS

### Test Graphs

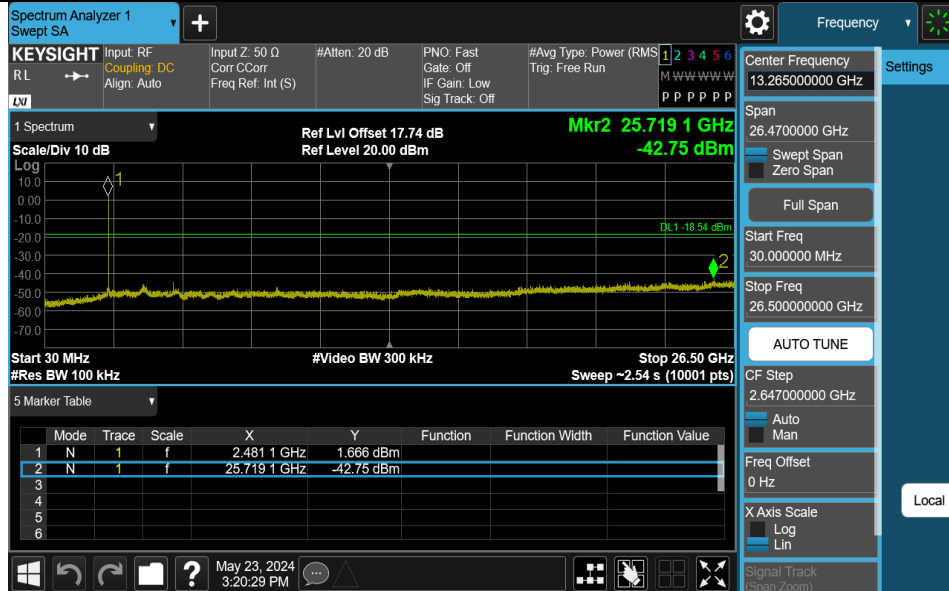
BLE\_1M-Ant1-2402-30~26500-PASS



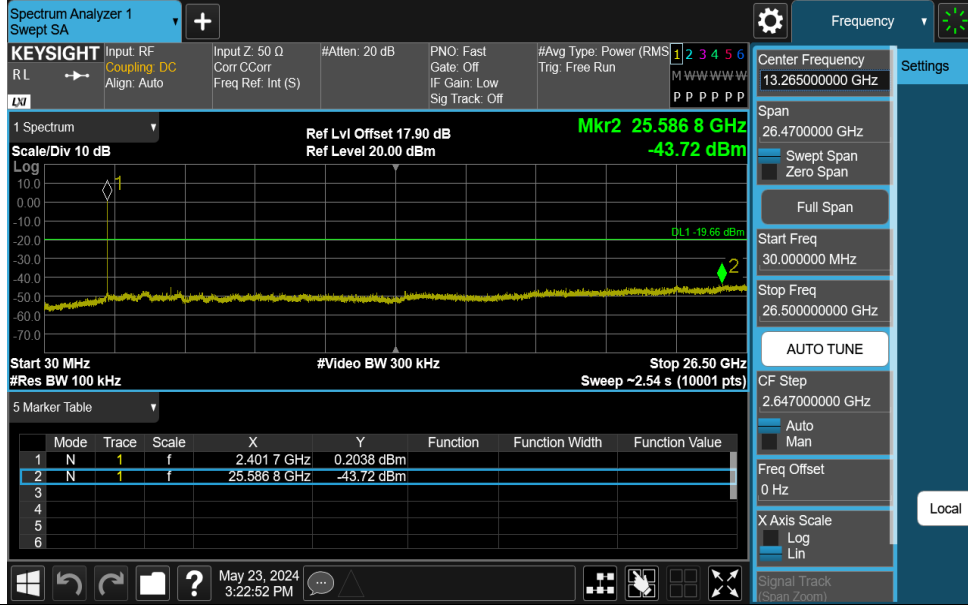
BLE\_1M-Ant1-2440-30~26500-PASS



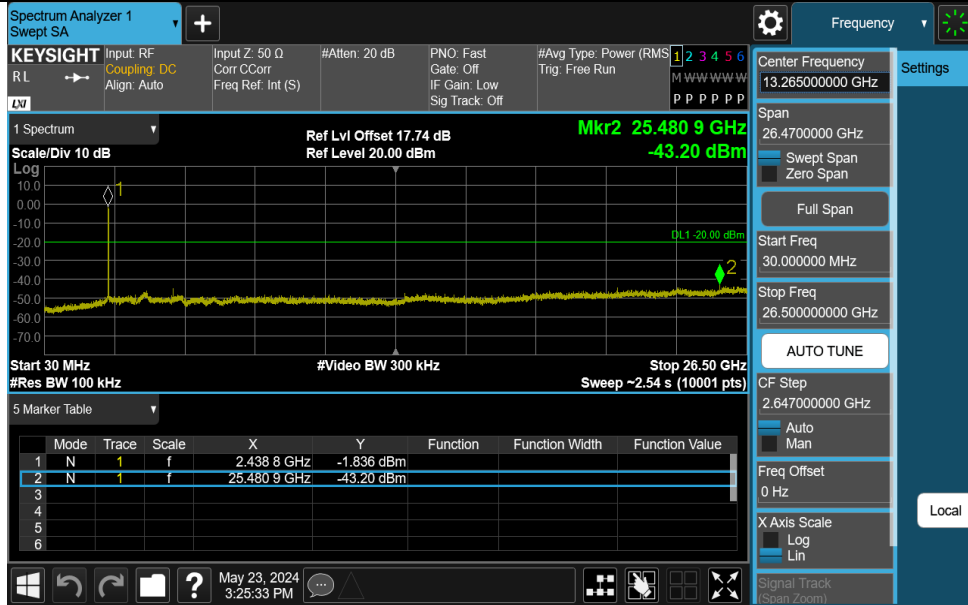
BLE\_1M-Ant1-2480-30~26500-PASS



BLE\_2M-Ant1-2402-30~26500-PASS



BLE\_2M-Ant1-2440-30~26500-PASS



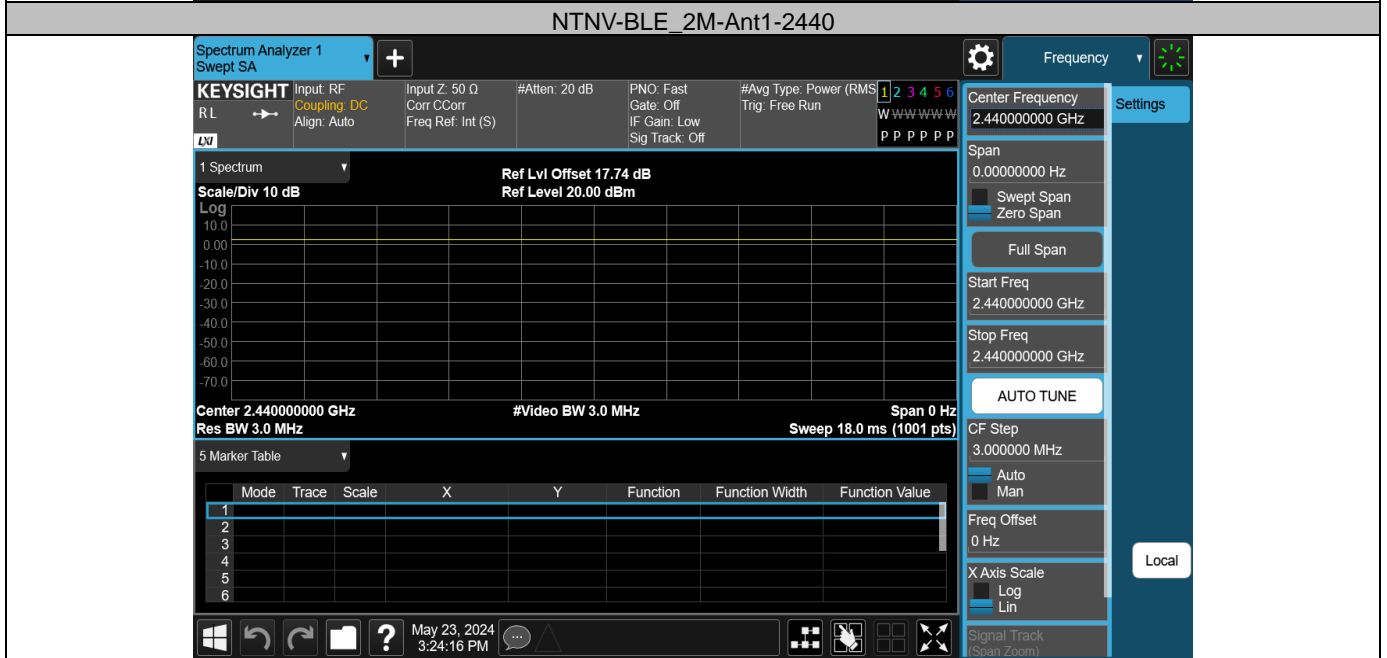
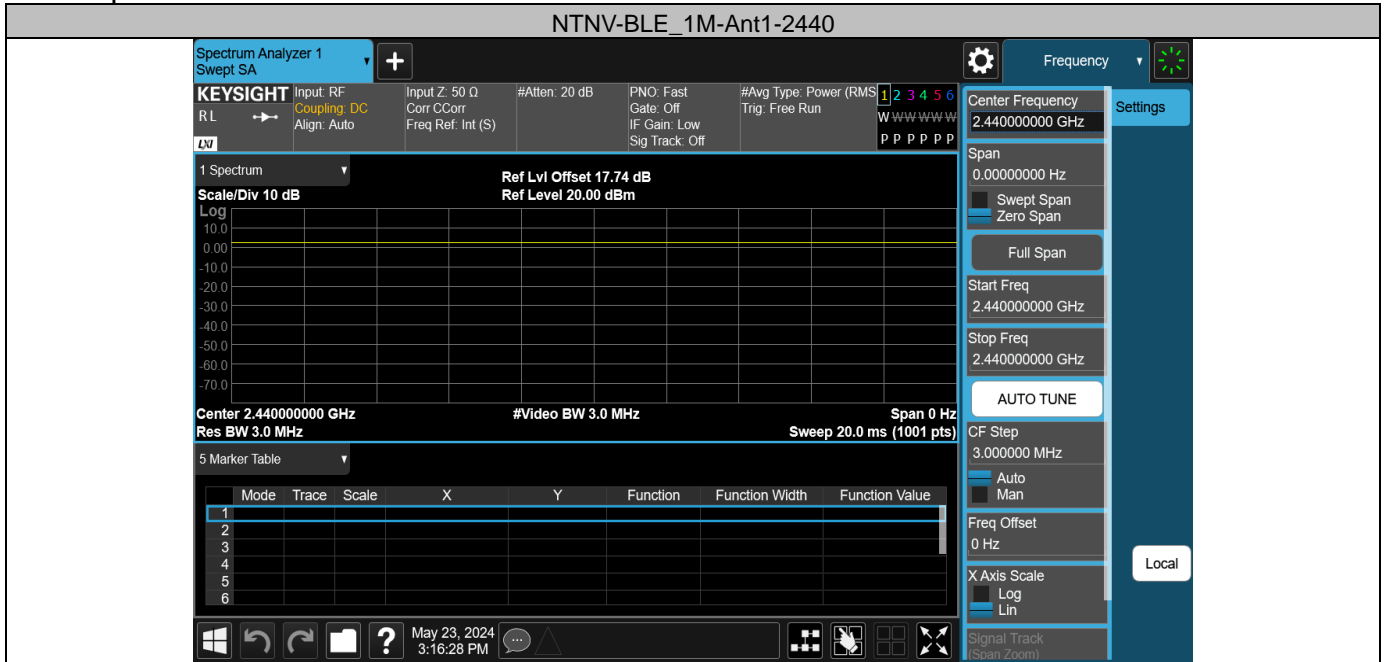
BLE\_2M-Ant1-2480-30~26500-PASS



### Appendix G: Duty Cycle Test Result

Test Mode	Antenna	Frequency[MHz]	ON Time [ms]	Period [ms]	Duty Cycle [%]	Duty Cycle Factor[dB]
BLE_1M	Ant1	2440	20.00	20.00	100.00	0.00
BLE_2M	Ant1	2440	18.00	18.00	100.00	0.00

### Test Graphs



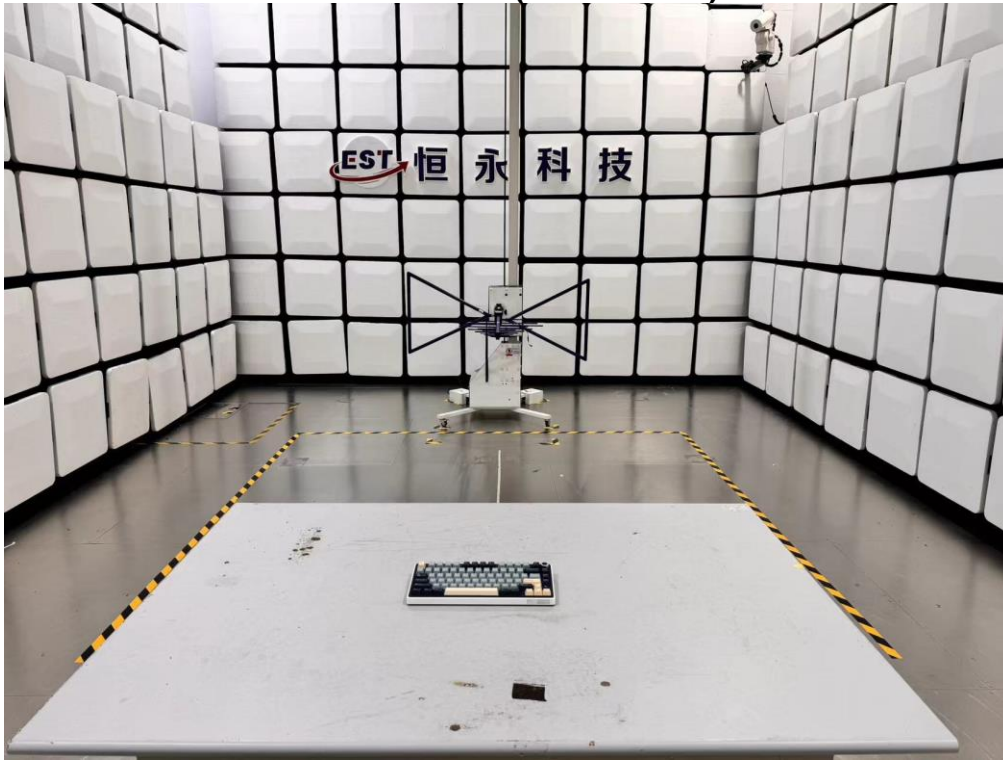
## 12. TEST SETUP PHOTO

### Conducted Test





**Radiated Test (Below 1GHz)**



**Radiated Test (Above 1GHz)**



### 13. EUT PHOTO

External Photos  
M/N: R75Pro



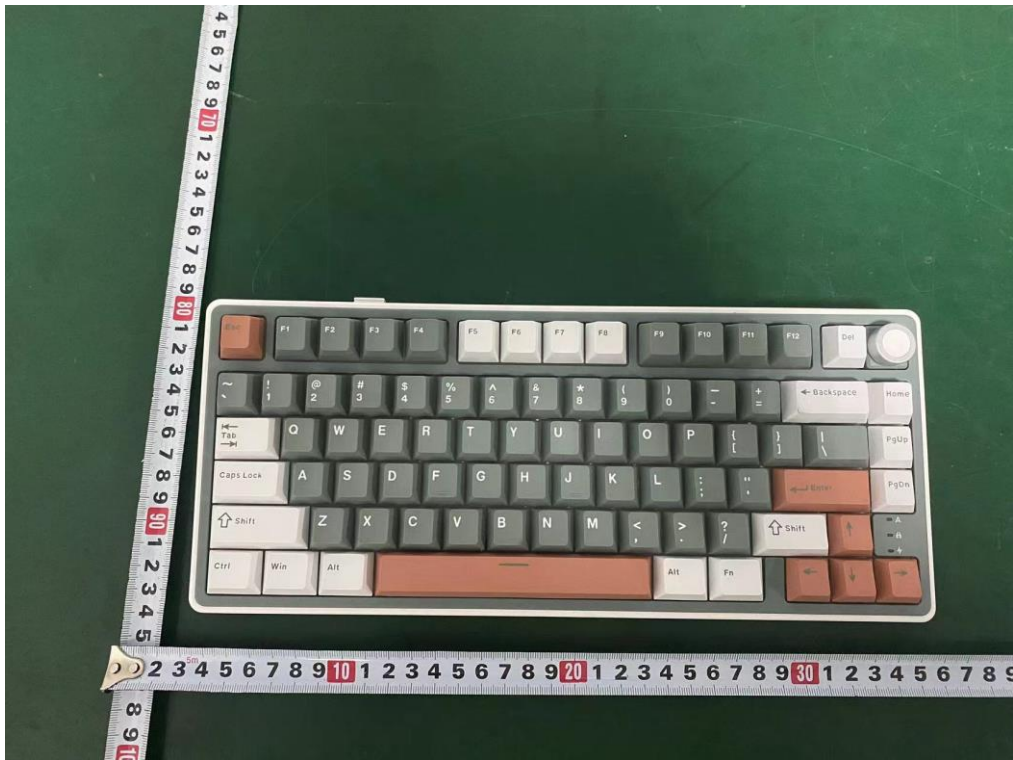
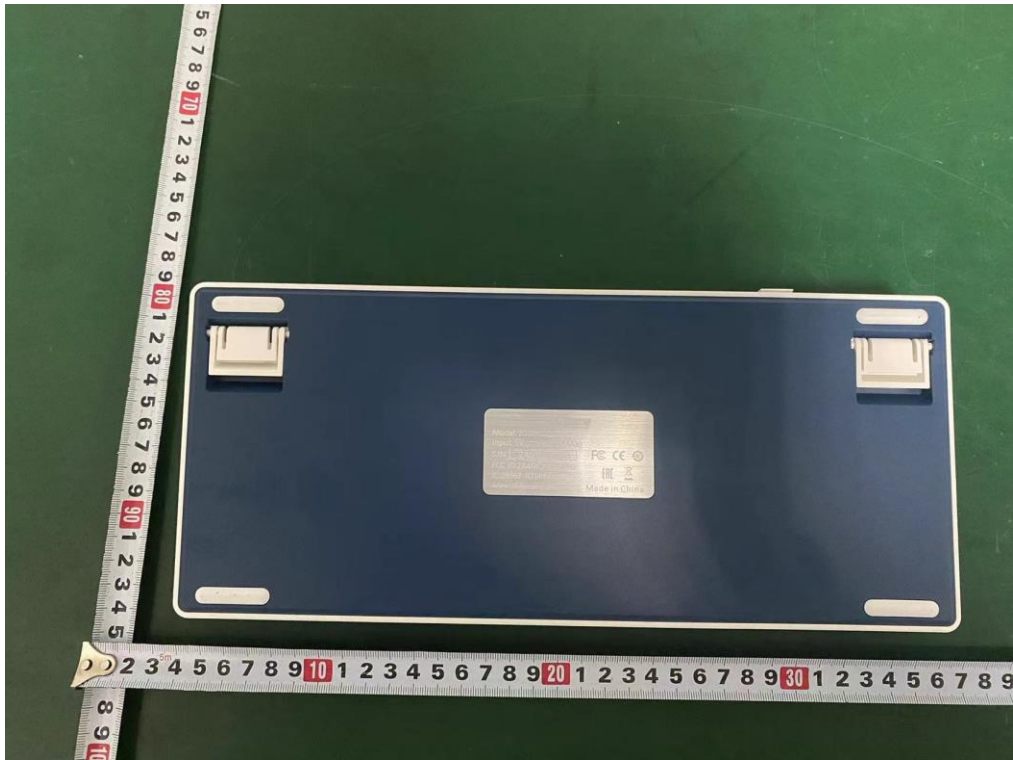
**External Photos**  
M/N: R75Pro



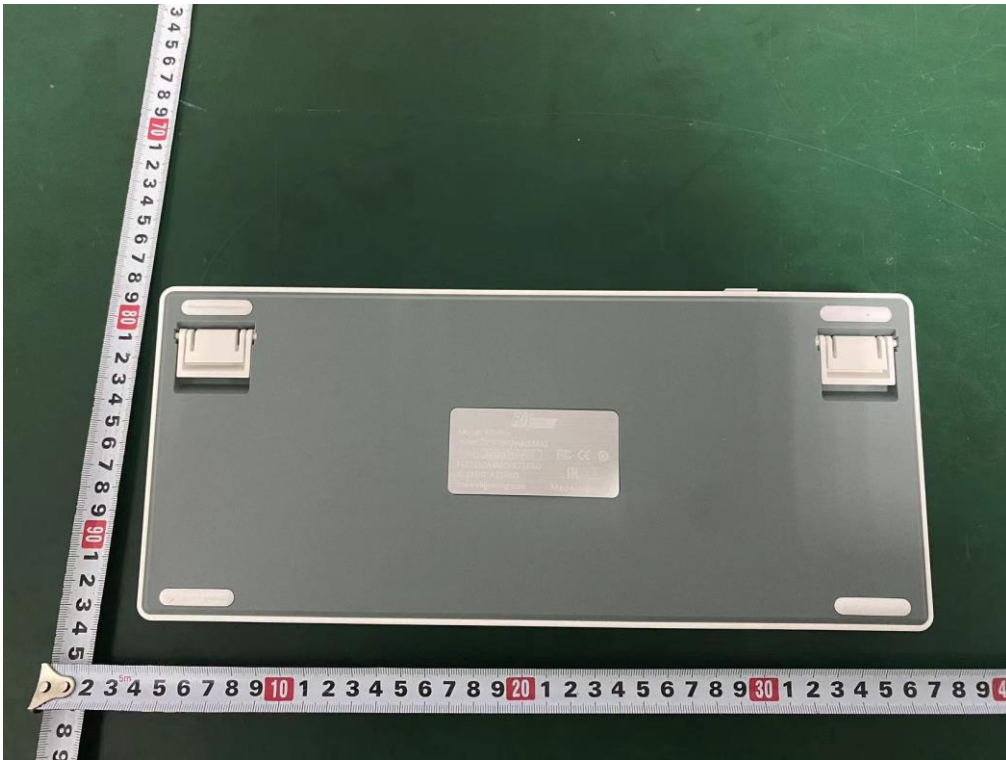
**External Photos**  
M/N: R75Pro



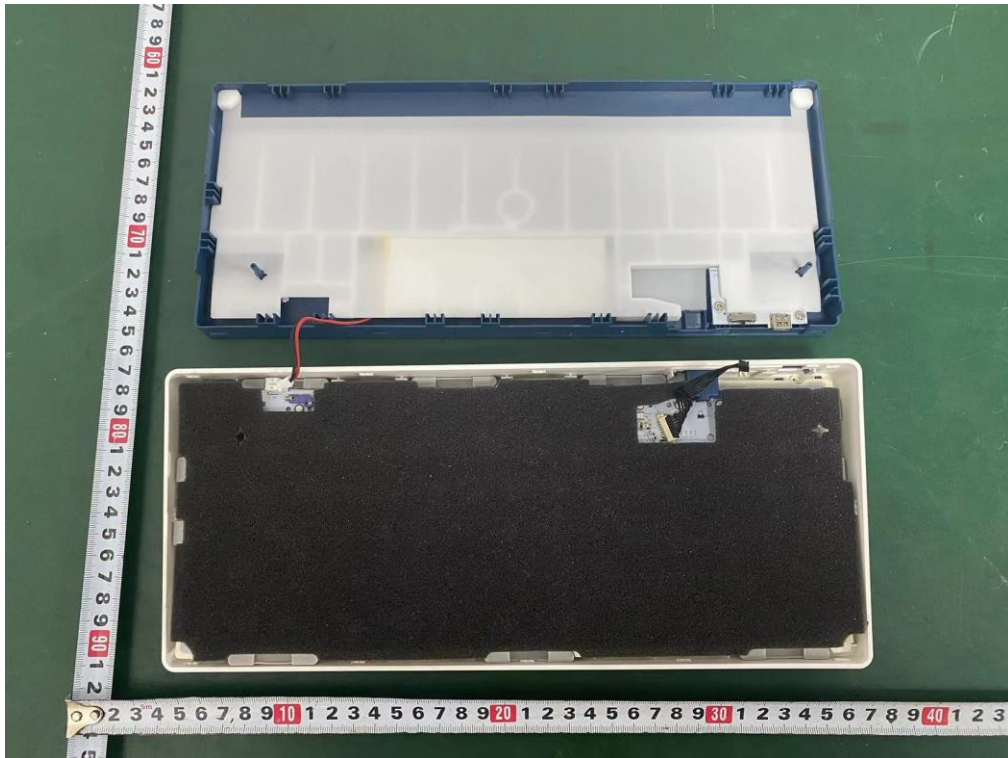
**External Photos**  
M/N: R75Pro



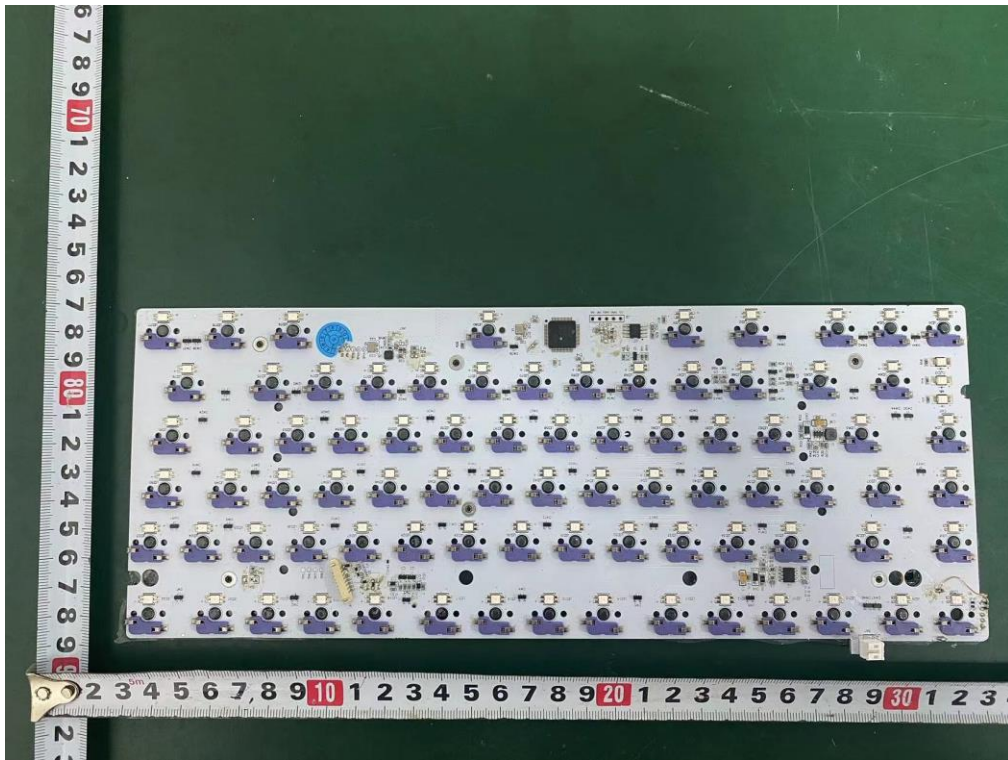
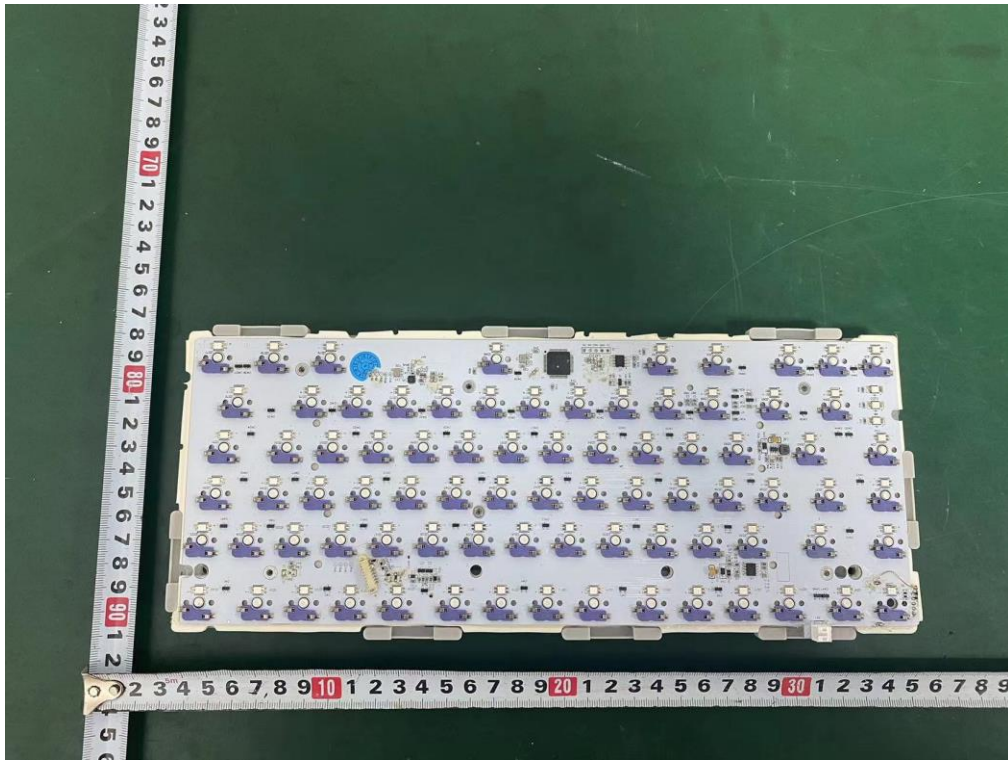
**External Photos**  
M/N: R75Pro



**Internal Photos**  
M/N: R75Pro

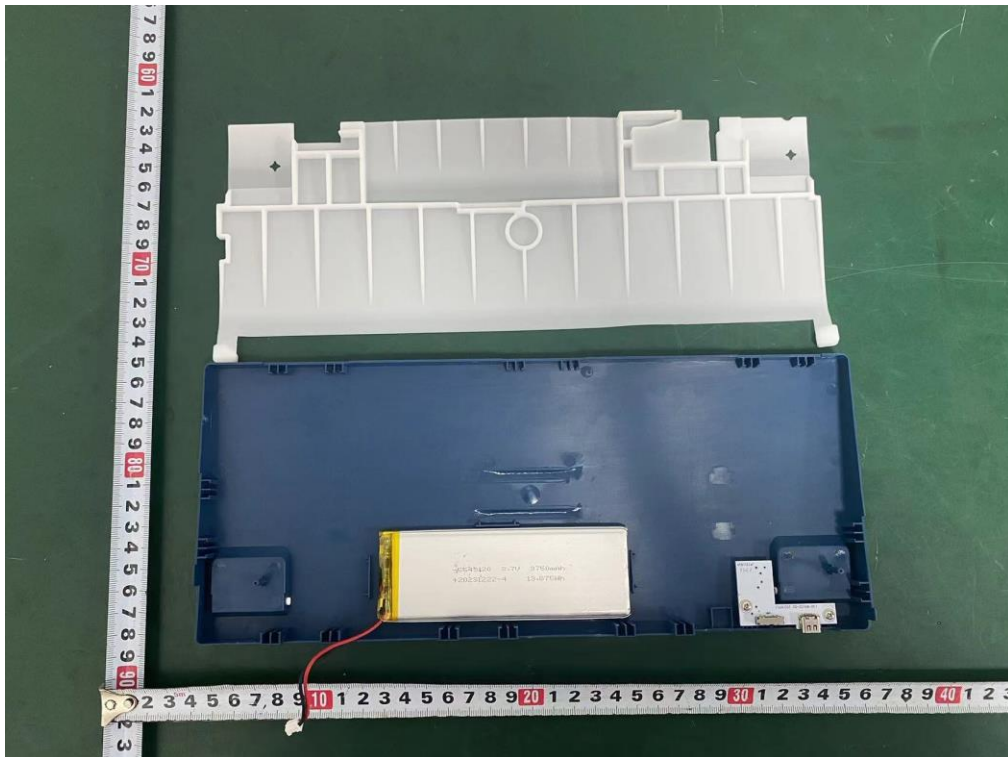
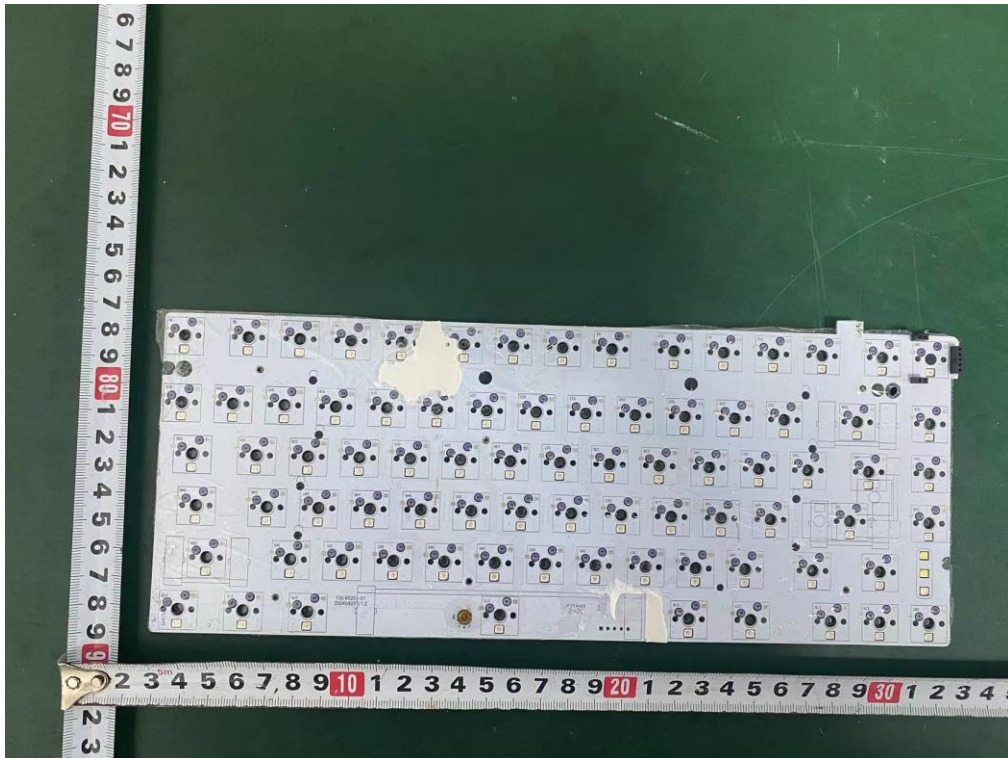


**Internal Photos**  
M/N: R75Pro

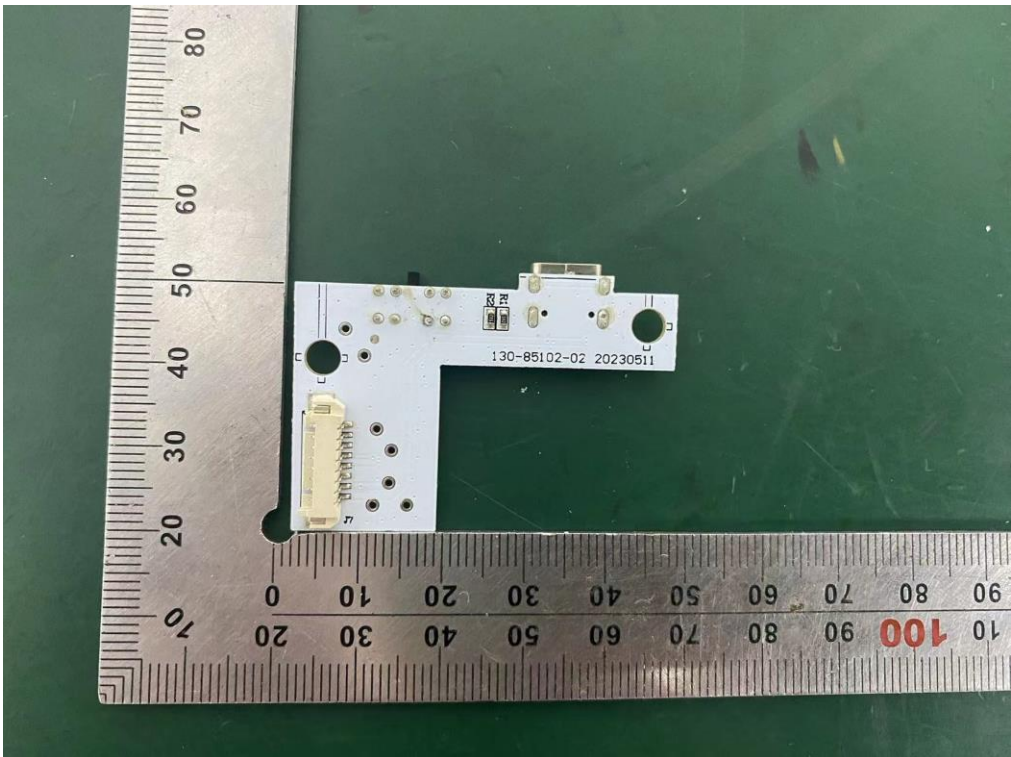
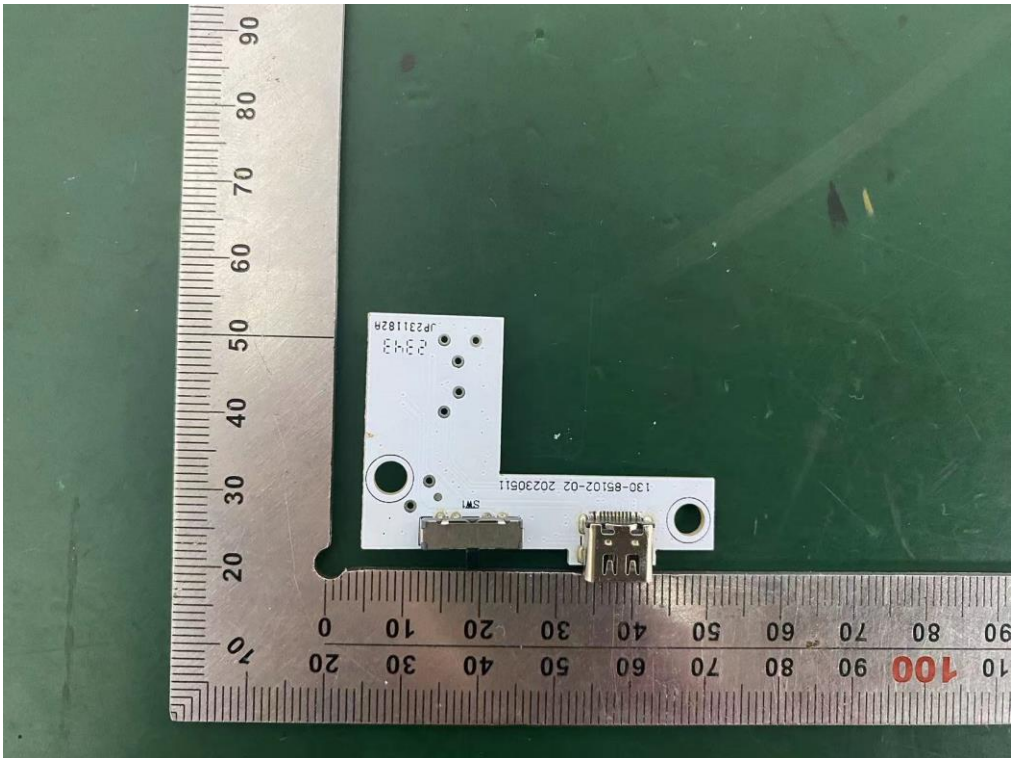




### Internal Photos M/N: R75Pro

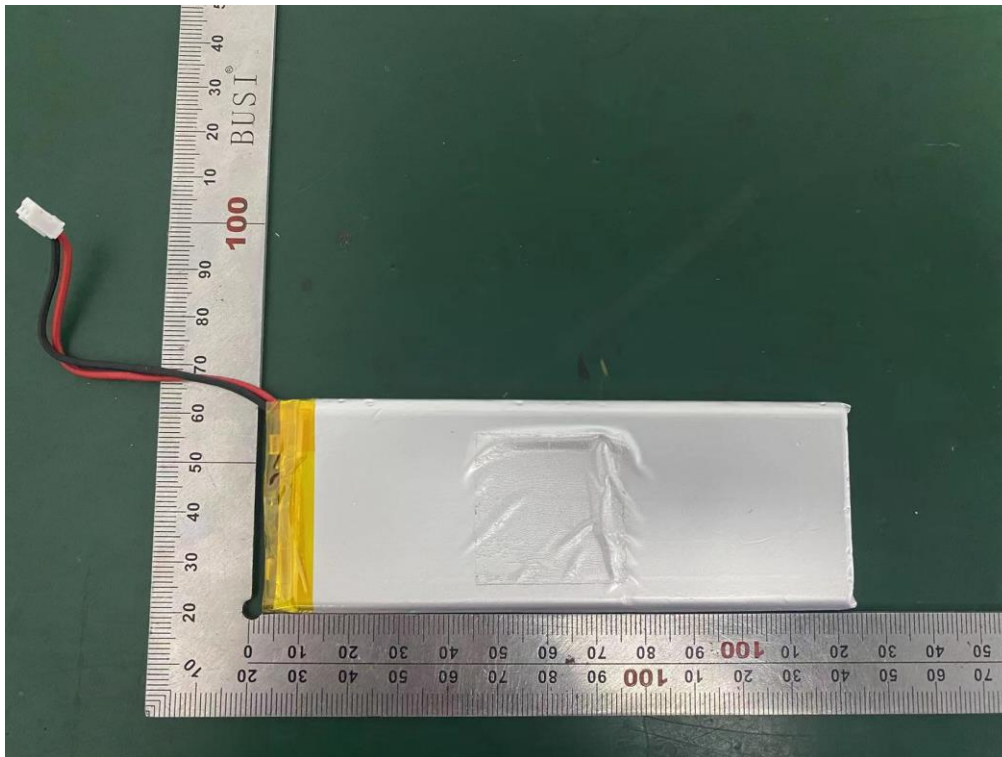
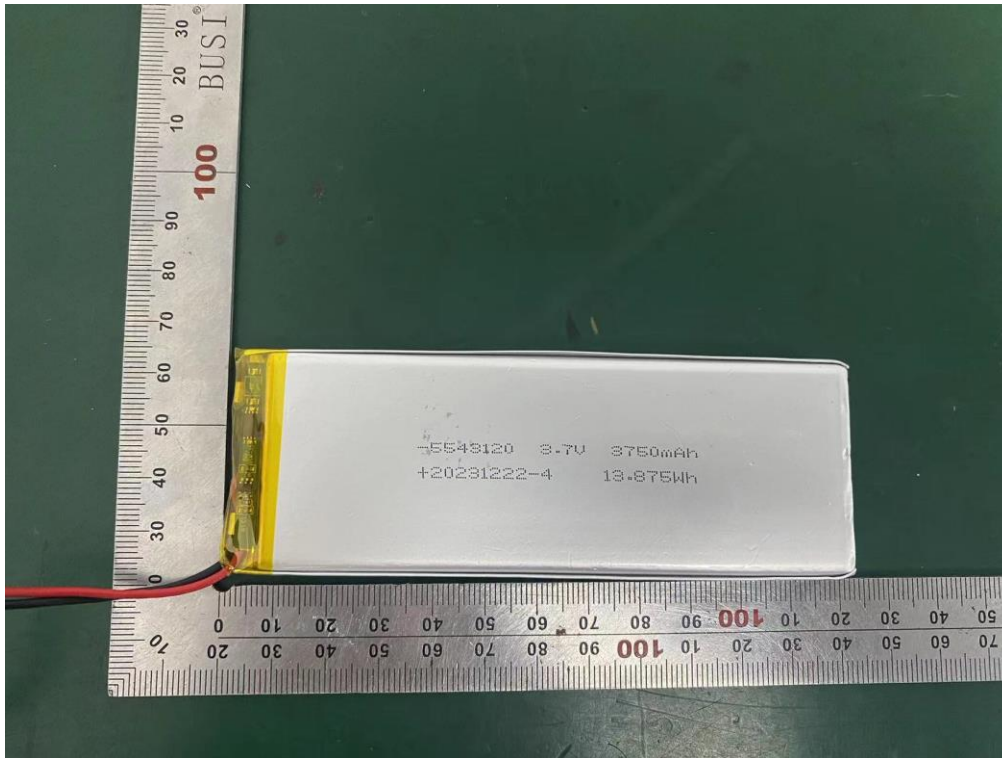


**Internal Photos**  
M/N: R75Pro



### Internal Photos

M/N: R75Pro



End of Test Report