

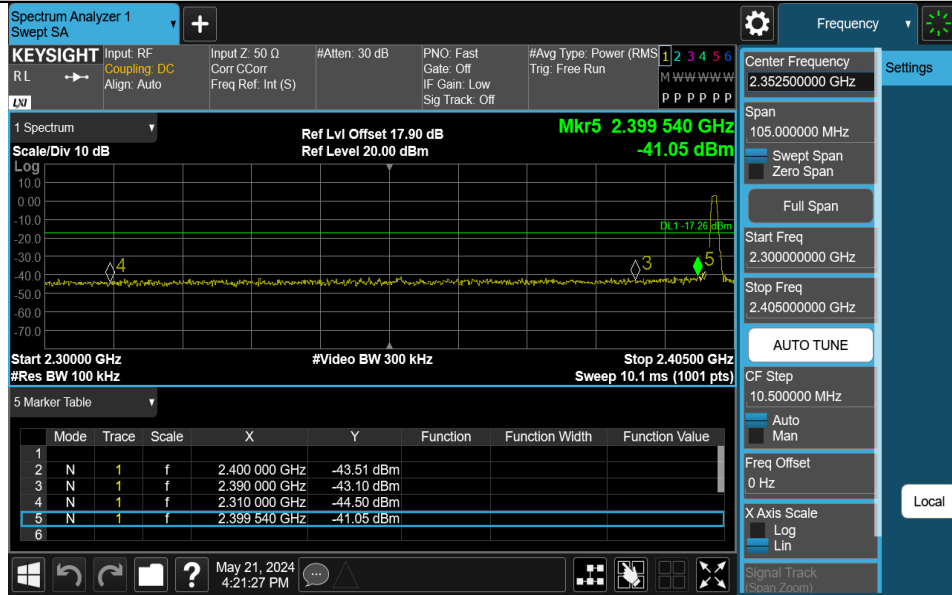
Appendix E: Band edge measurements

Test Result

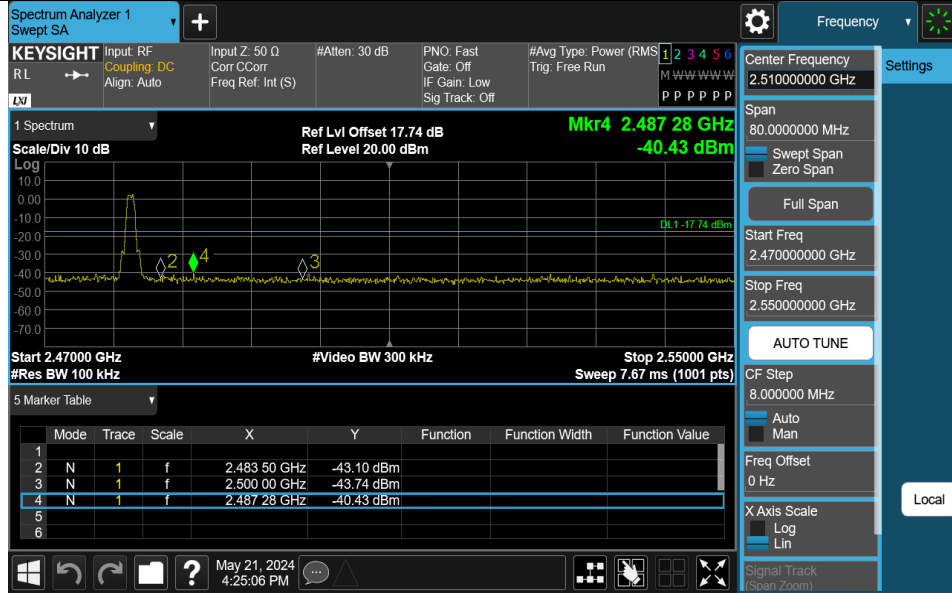
Test Mode	Antenna	ChName	Frequency[MHz]	RefLevel[dBm]	Result[dBm]	Limit[dBm]	Verdict
BLE_1M	Ant1	Low	2402	2.74	-41.06	≤ -17.26	PASS
BLE_1M	Ant1	High	2480	2.26	-40.43	≤ -17.74	PASS
BLE_2M	Ant1	Low	2402	0.99	-30.92	≤ -19.01	PASS
BLE_2M	Ant1	High	2480	0.49	-41.17	≤ -19.51	PASS

Test Graphs

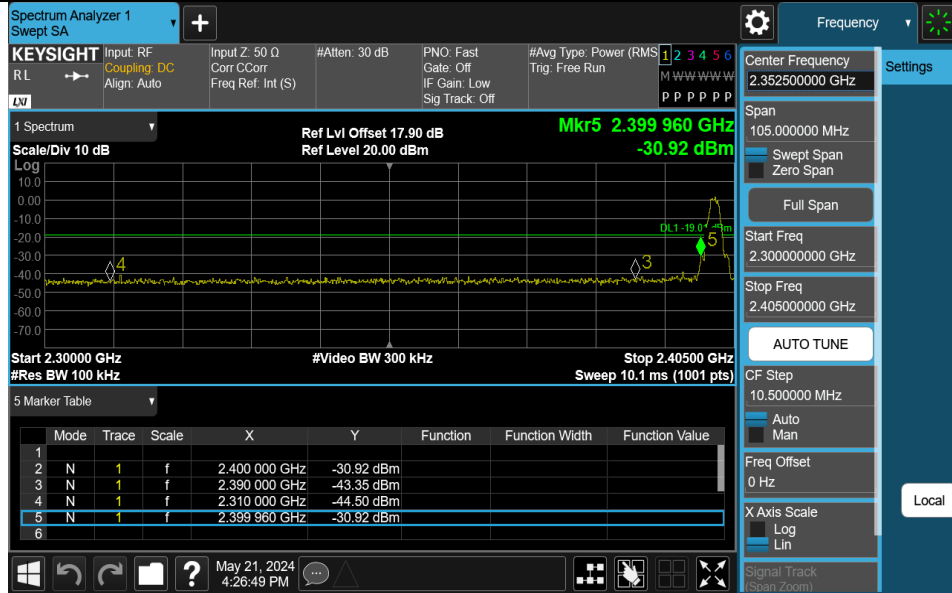
BLE_1M-Ant1-2402-PASS



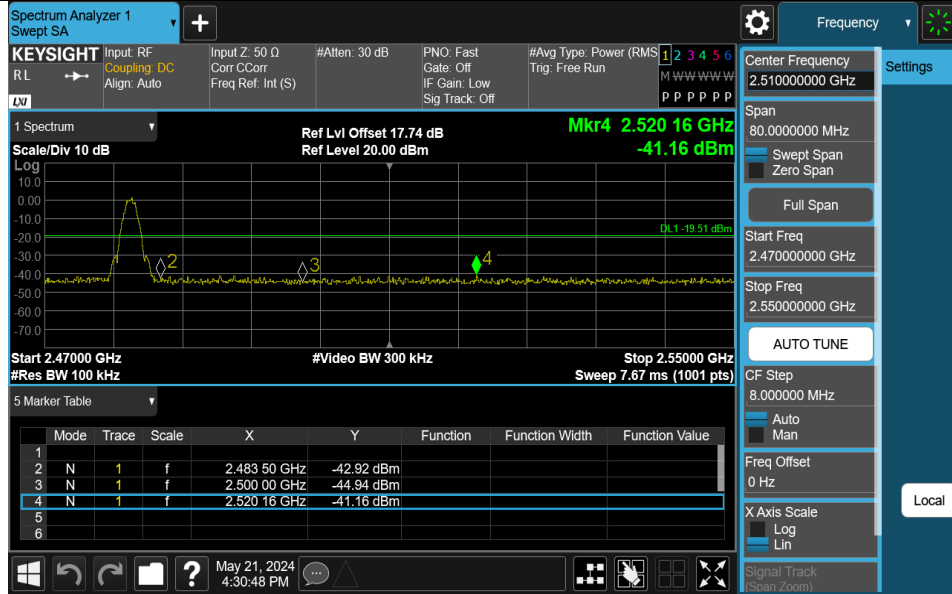
BLE_1M-Ant1-2480-PASS



BLE_2M-Ant1-2402-PASS



BLE_2M-Ant1-2480-PASS

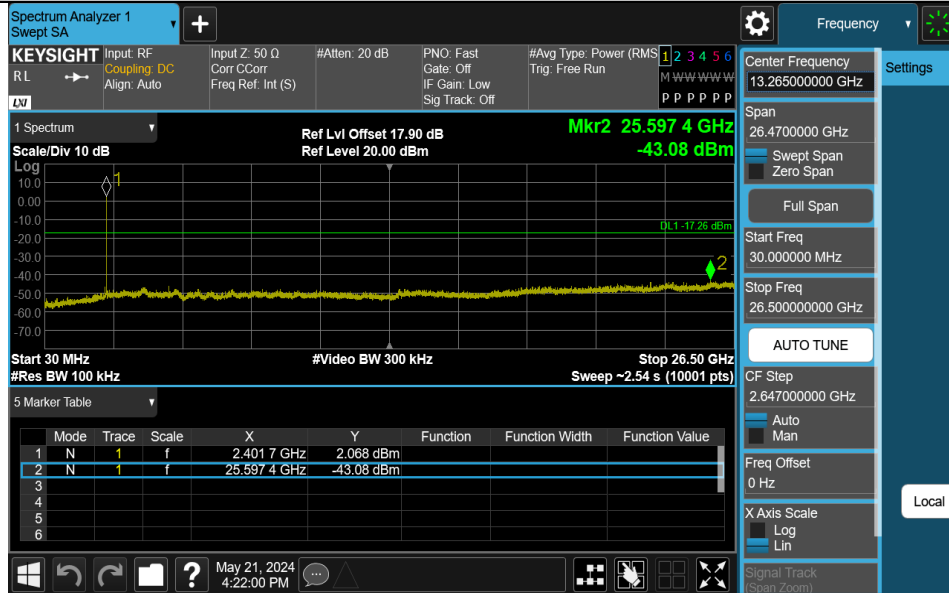


**Appendix F: Conducted Spurious Emission
Test Result**

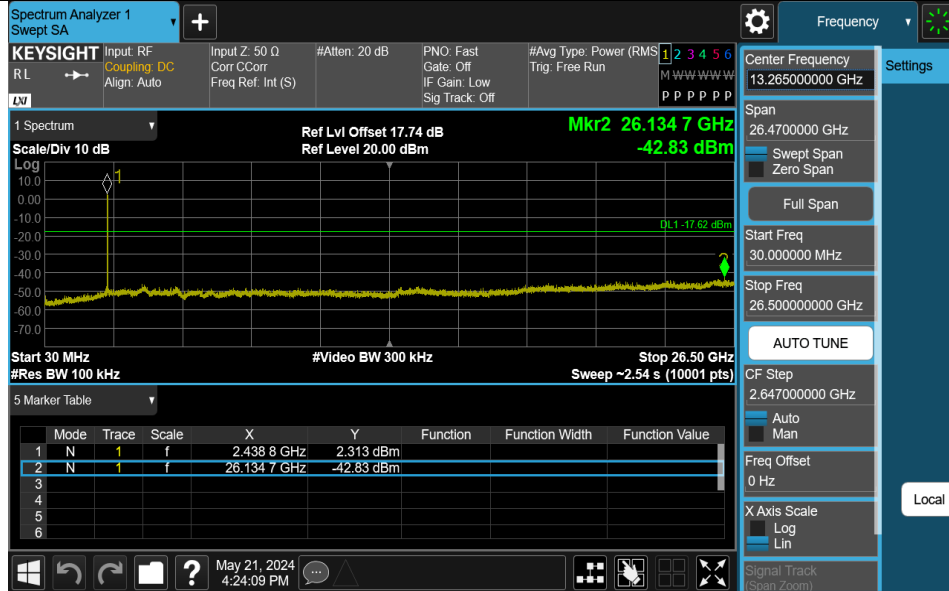
Test Mode	Antenna	Frequency[MHz]	FreqRange [MHz]	RefLevel [dBm]	Result[dBm]	Limit[dBm]	Verdict
BLE_1M	Ant1	2402	30~26500	2.74	-43.08	≤-17.26	PASS
BLE_1M	Ant1	2440	30~26500	2.38	-42.84	≤-17.62	PASS
BLE_1M	Ant1	2480	30~26500	2.26	-42.68	≤-17.74	PASS
BLE_2M	Ant1	2402	30~26500	0.99	-43.66	≤-19.01	PASS
BLE_2M	Ant1	2440	30~26500	0.64	-42.99	≤-19.36	PASS
BLE_2M	Ant1	2480	30~26500	0.49	-42.92	≤-19.51	PASS

Test Graphs

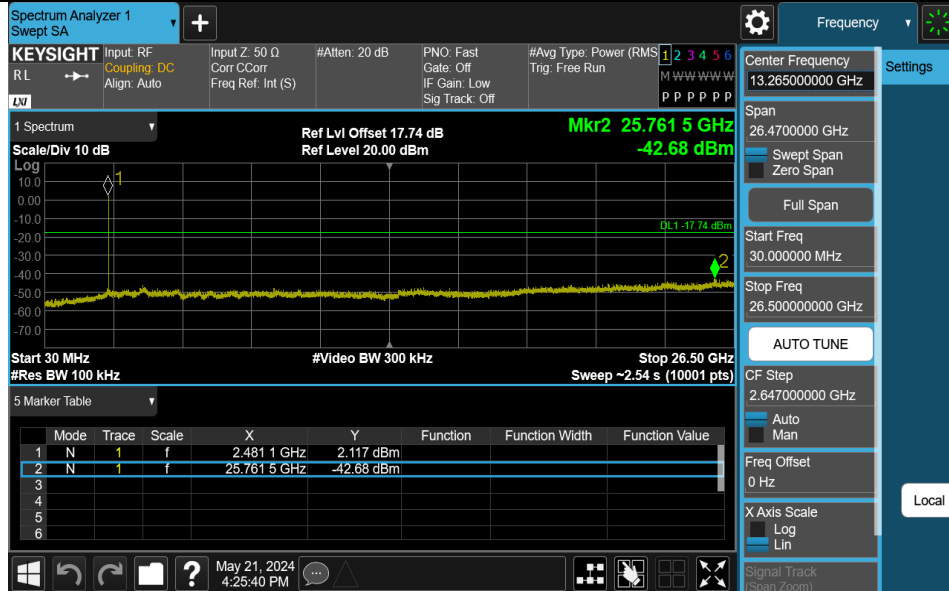
BLE_1M-Ant1-2402-30~26500-PASS



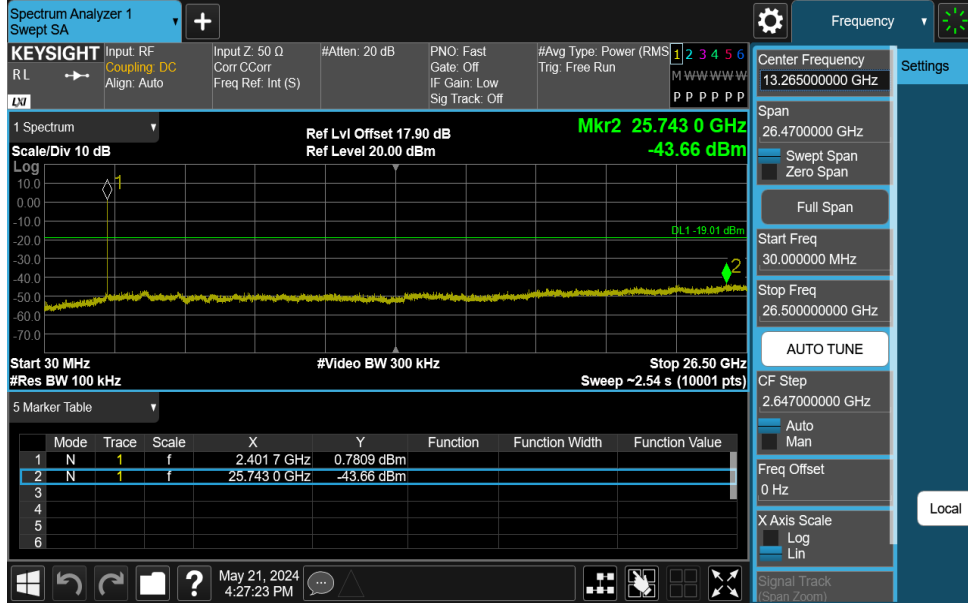
BLE_1M-Ant1-2440-30~26500-PASS



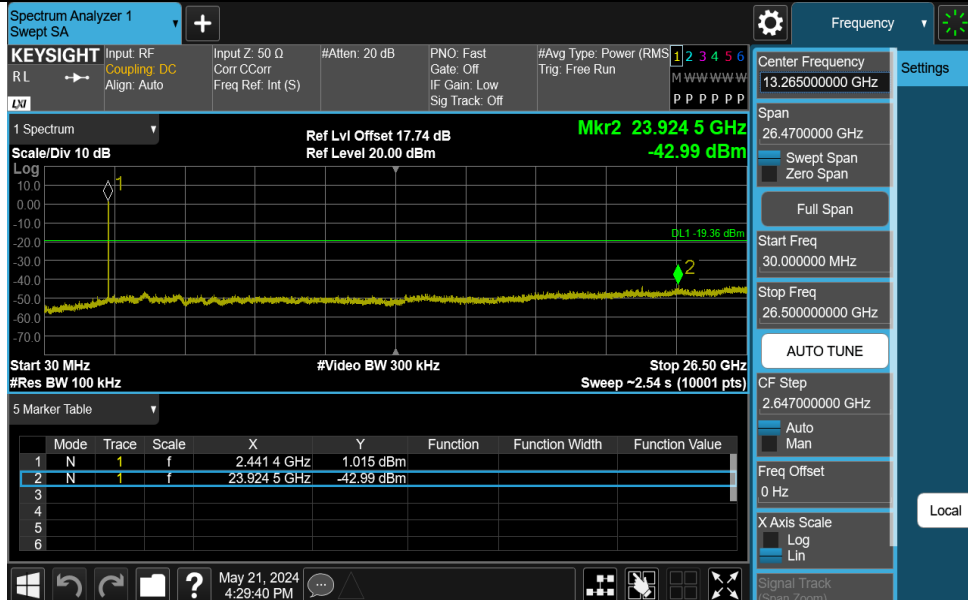
BLE_1M-Ant1-2480-30~26500-PASS



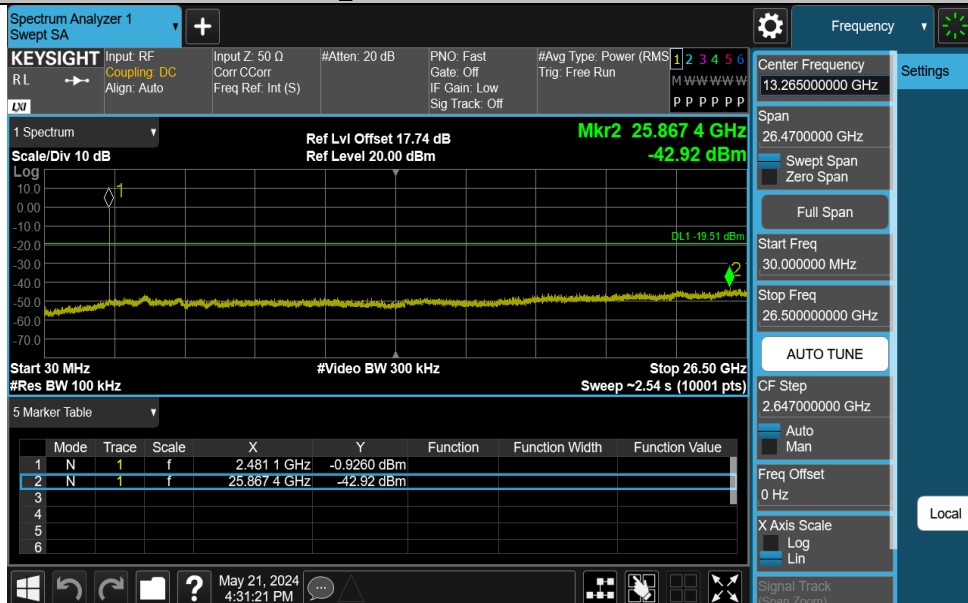
BLE_2M-Ant1-2402-30~26500-PASS



BLE_2M-Ant1-2440-30~26500-PASS



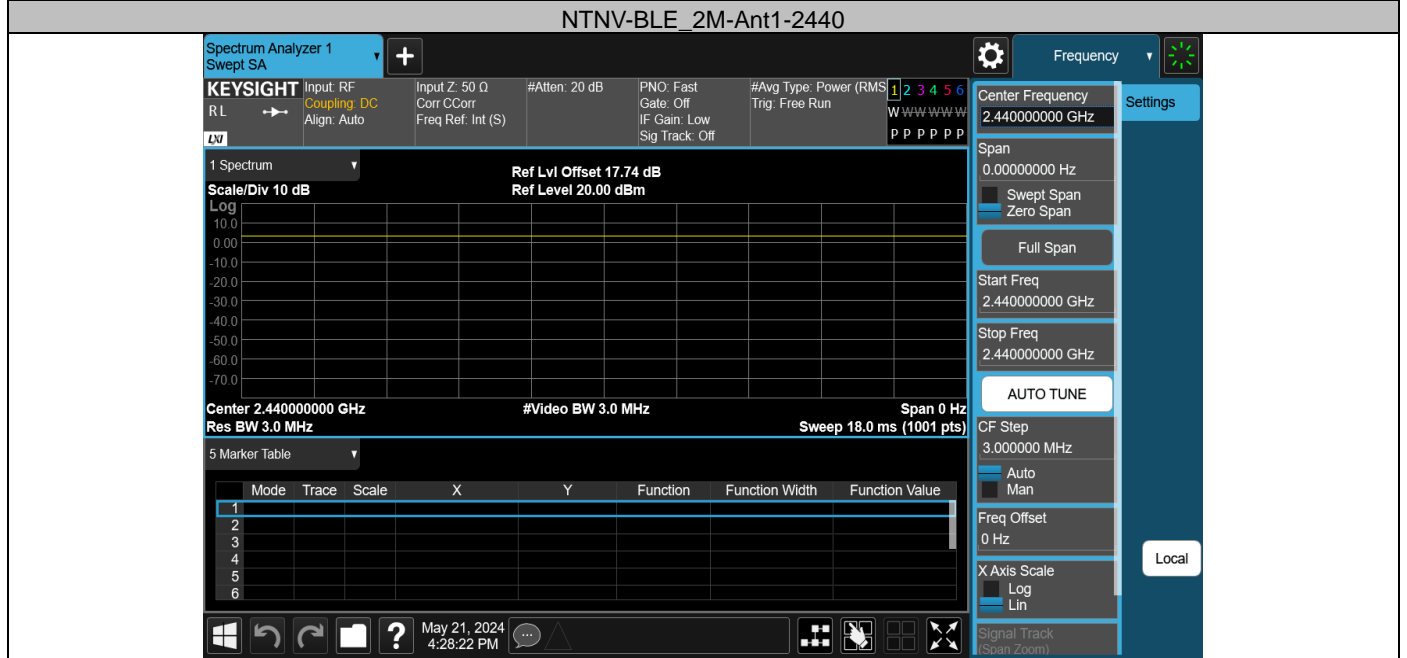
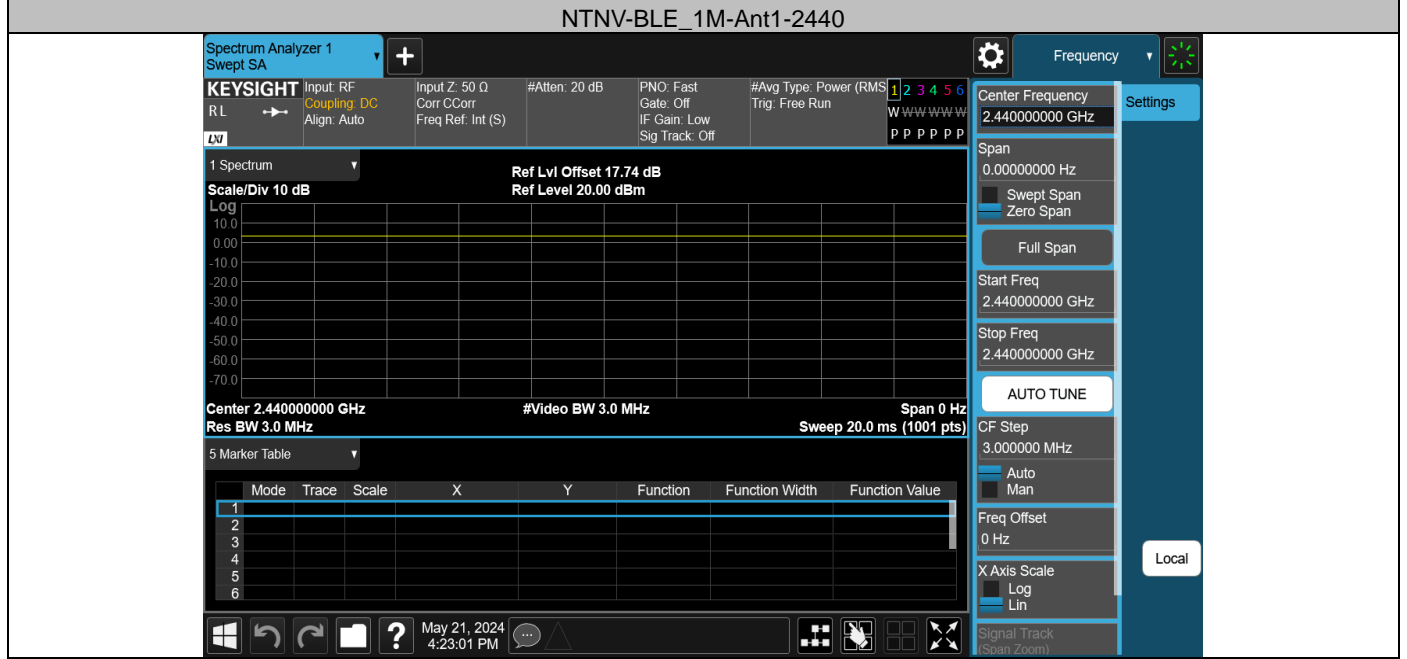
BLE_2M-Ant1-2480-30~26500-PASS



Appendix G: Duty Cycle Test Result

Test Mode	Antenna	Frequency[MHz]	ON Time [ms]	Period [ms]	Duty Cycle [%]	Duty Cycle Factor[dB]
BLE_1M	Ant1	2440	15.00	15.00	100.00	0.00
BLE_2M	Ant1	2440	18.00	18.00	100.00	0.00

Test Graphs

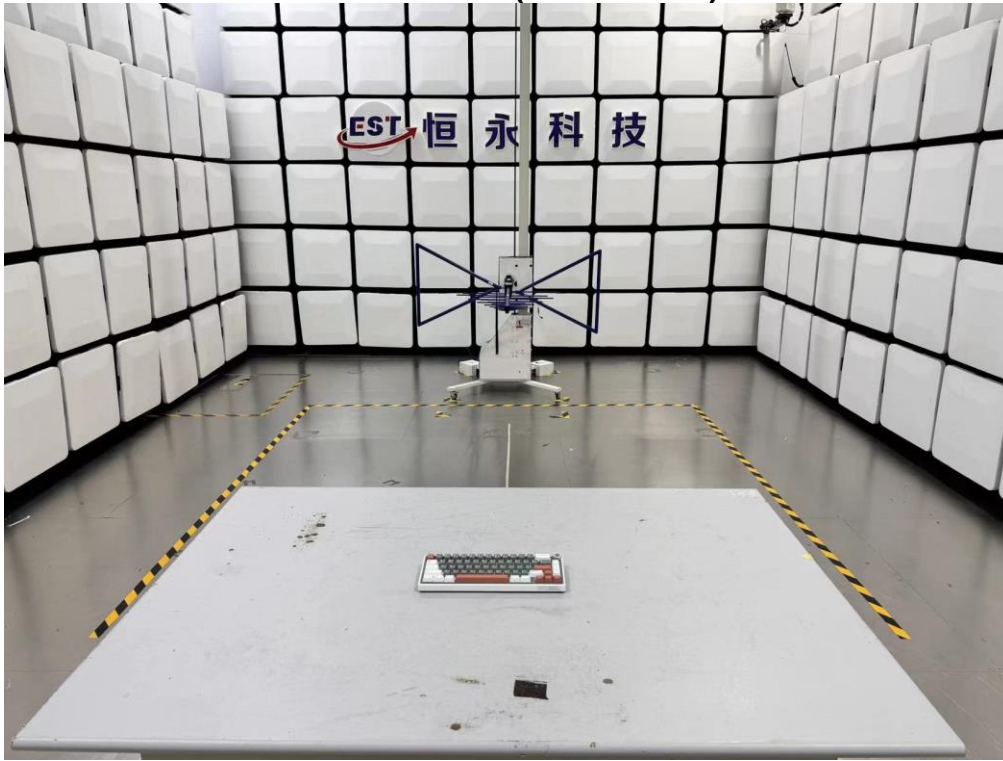


12. TEST SETUP PHOTO

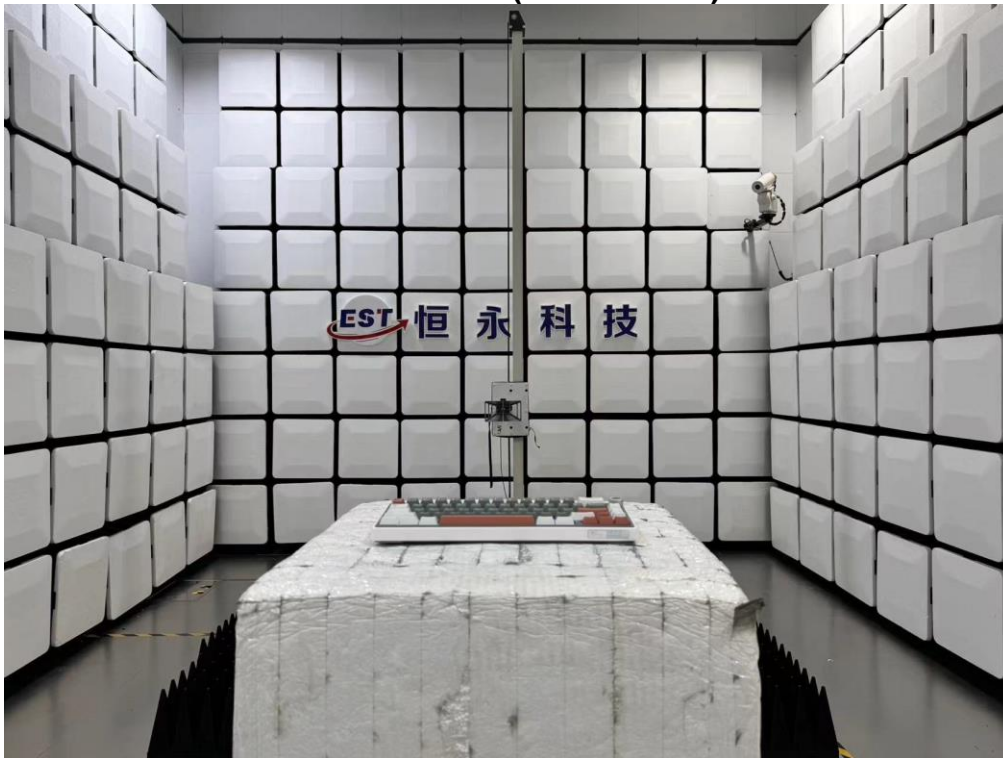
Conducted Test



Radiated Test (Below 1GHz)

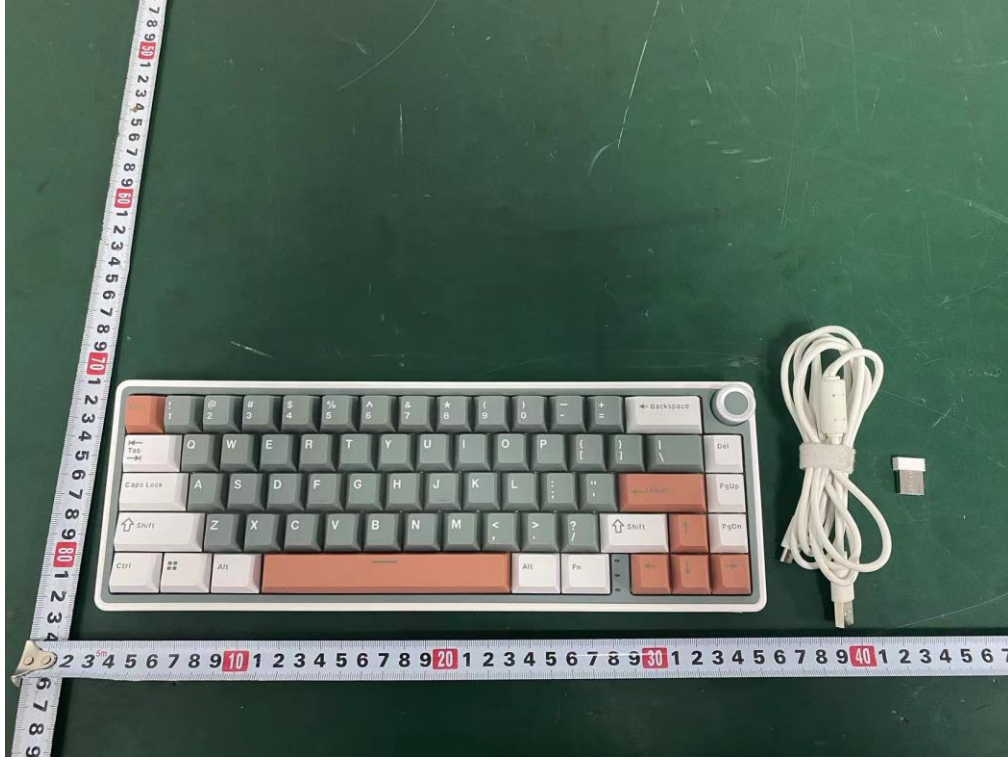


Radiated Test (Above 1GHz)

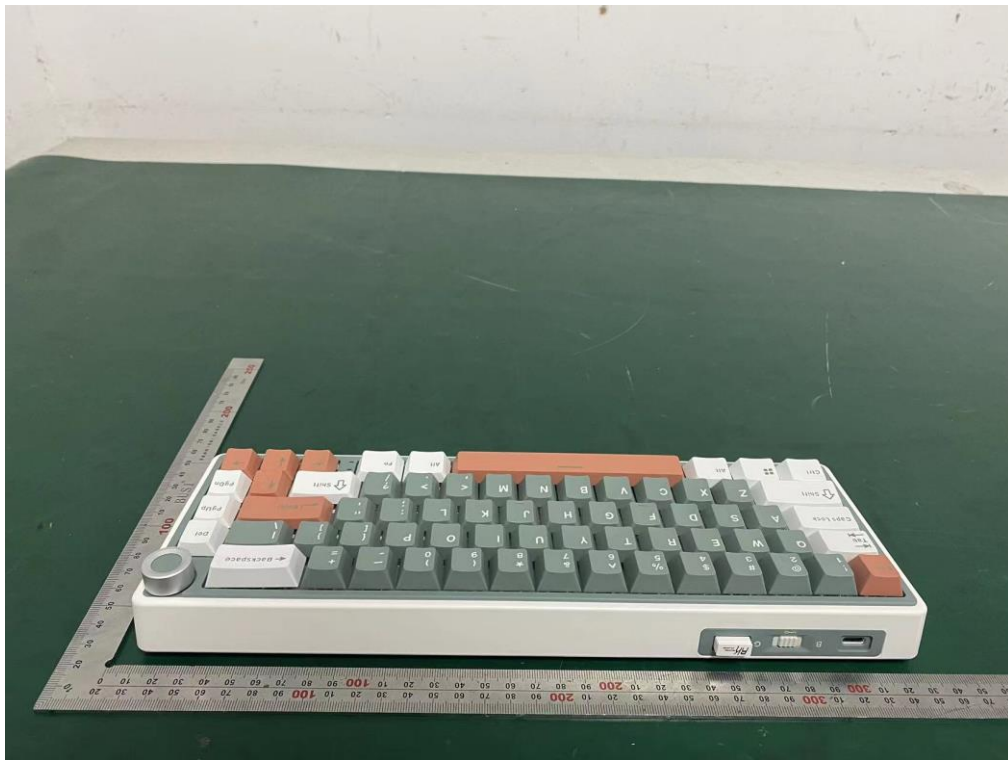


13. EUT PHOTO

External Photos
M/N: R65



External Photos M/N: R65



External Photos
M/N: R65

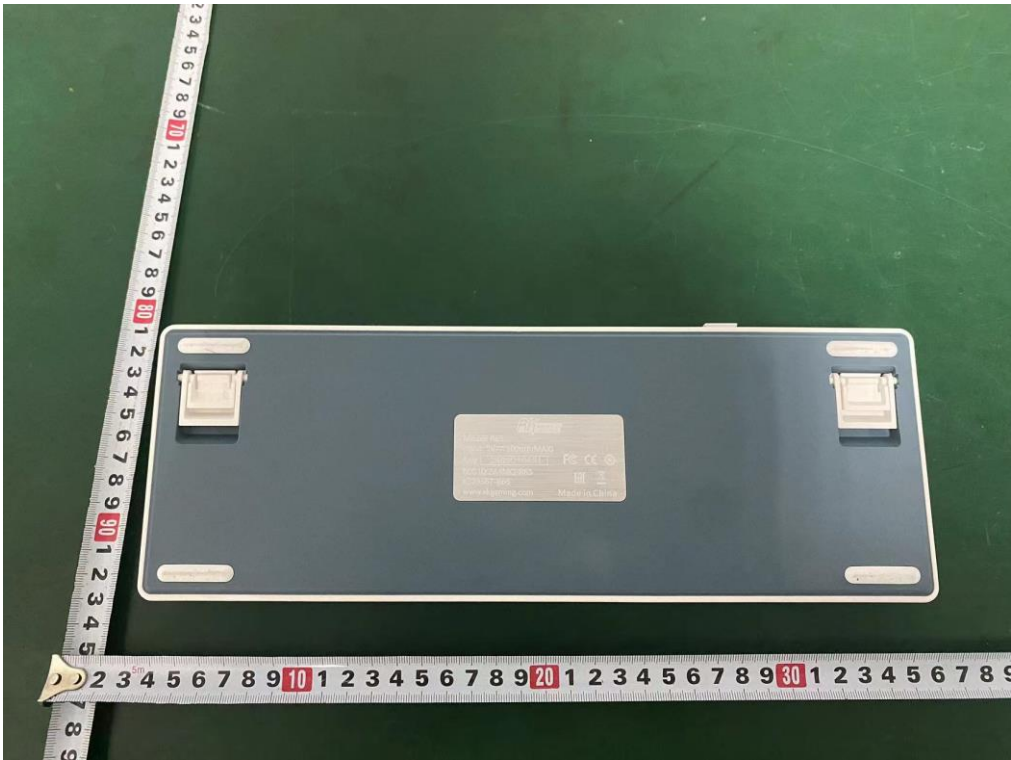


External Photos
M/N: R65

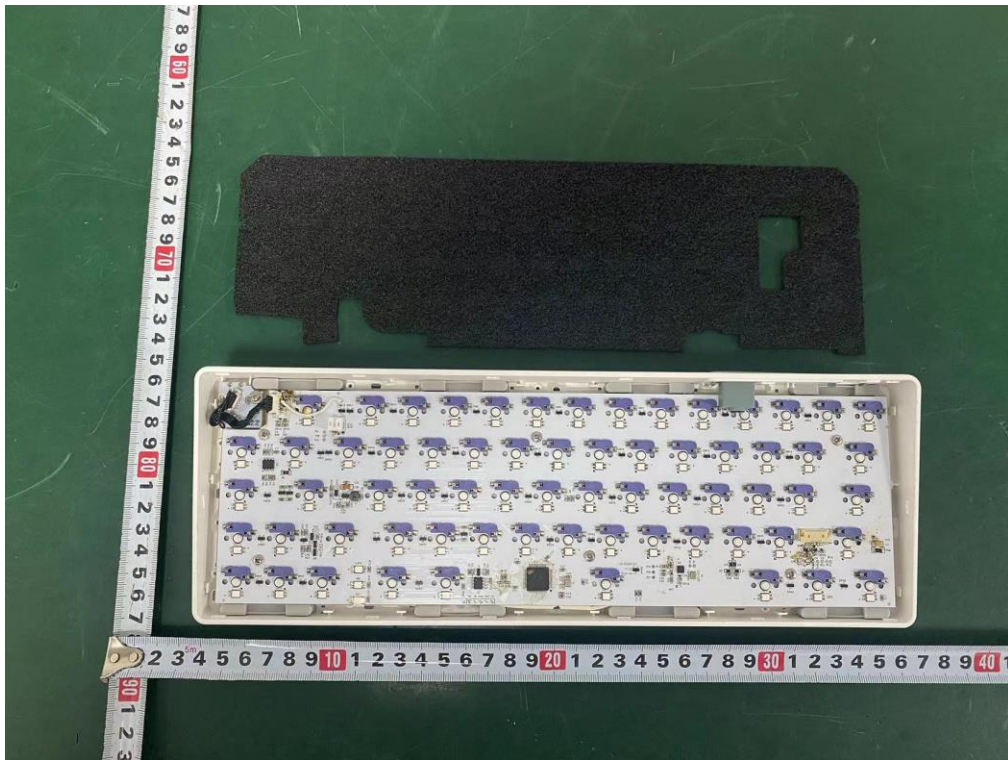
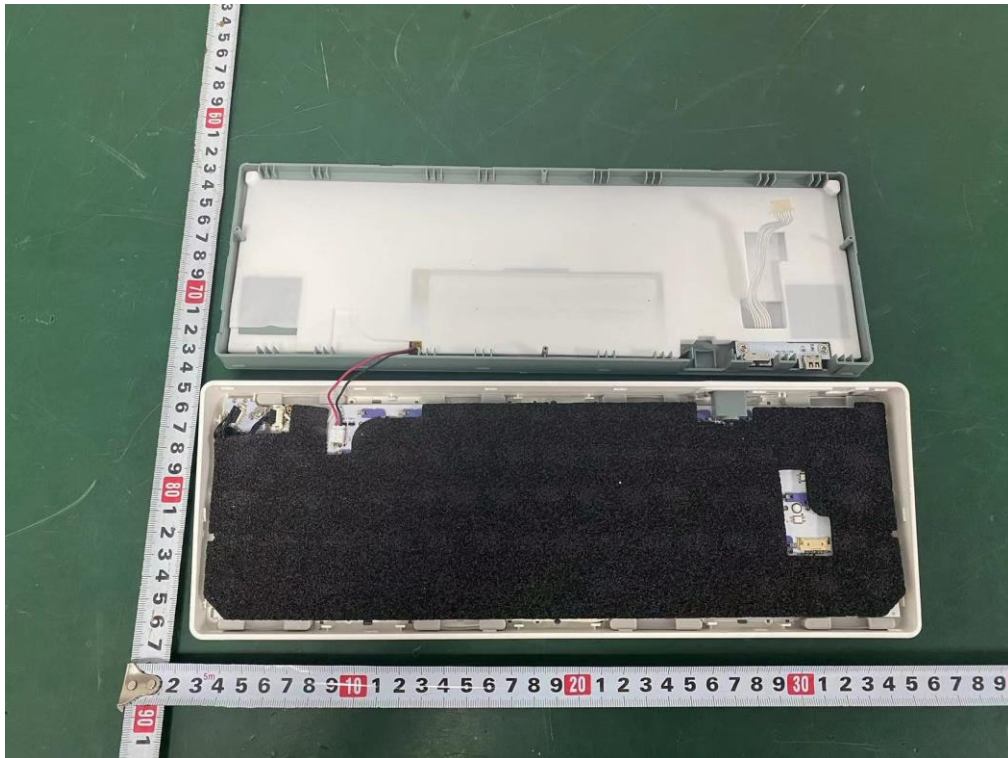


External Photos

M/N: R65

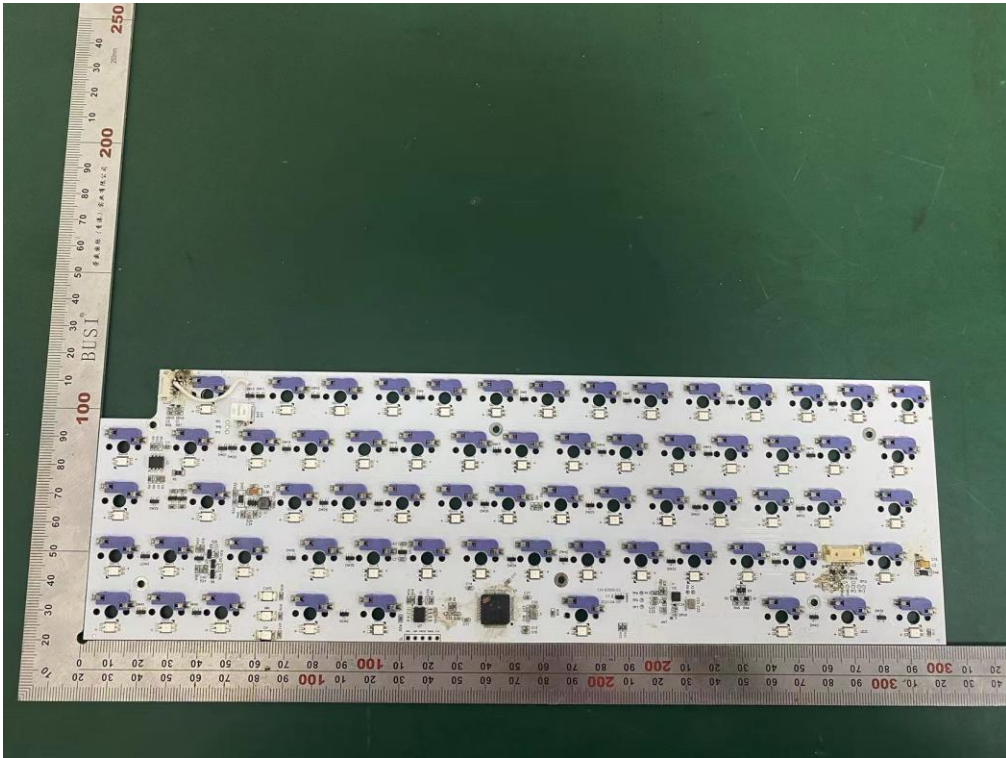
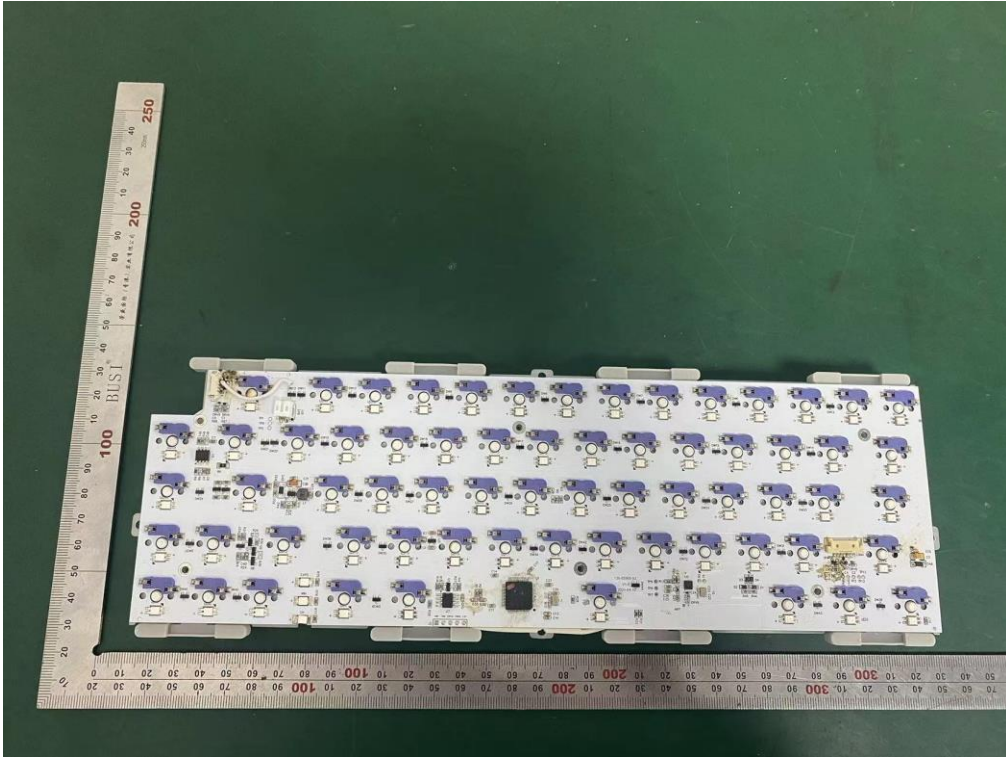


Internal Photos
M/N: R65

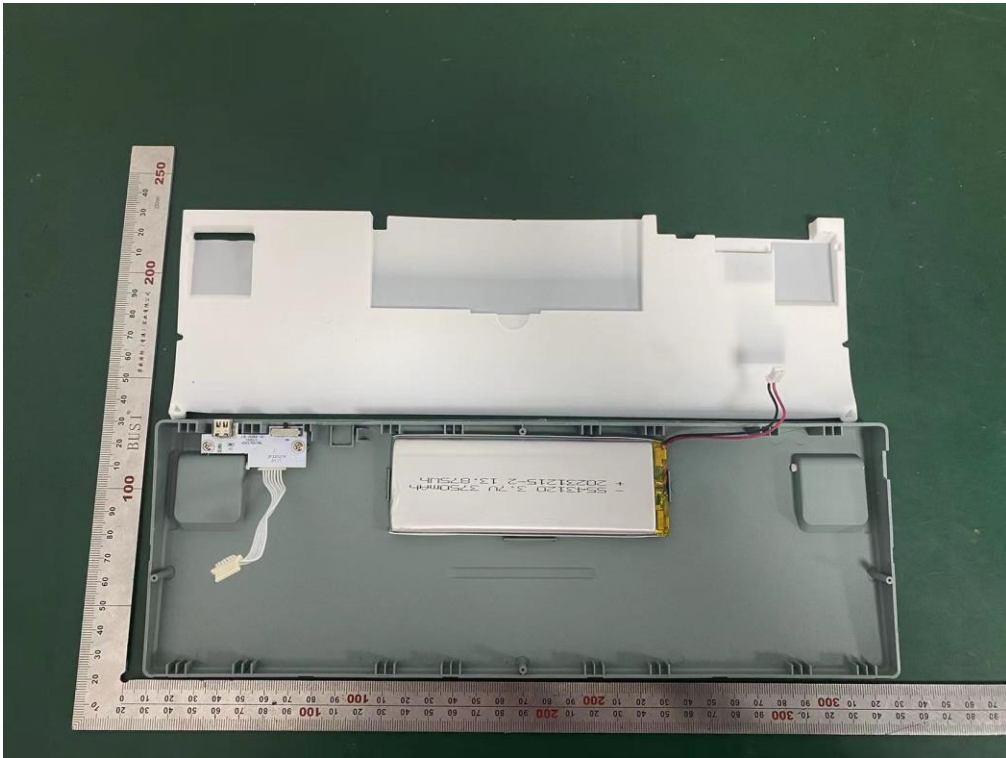
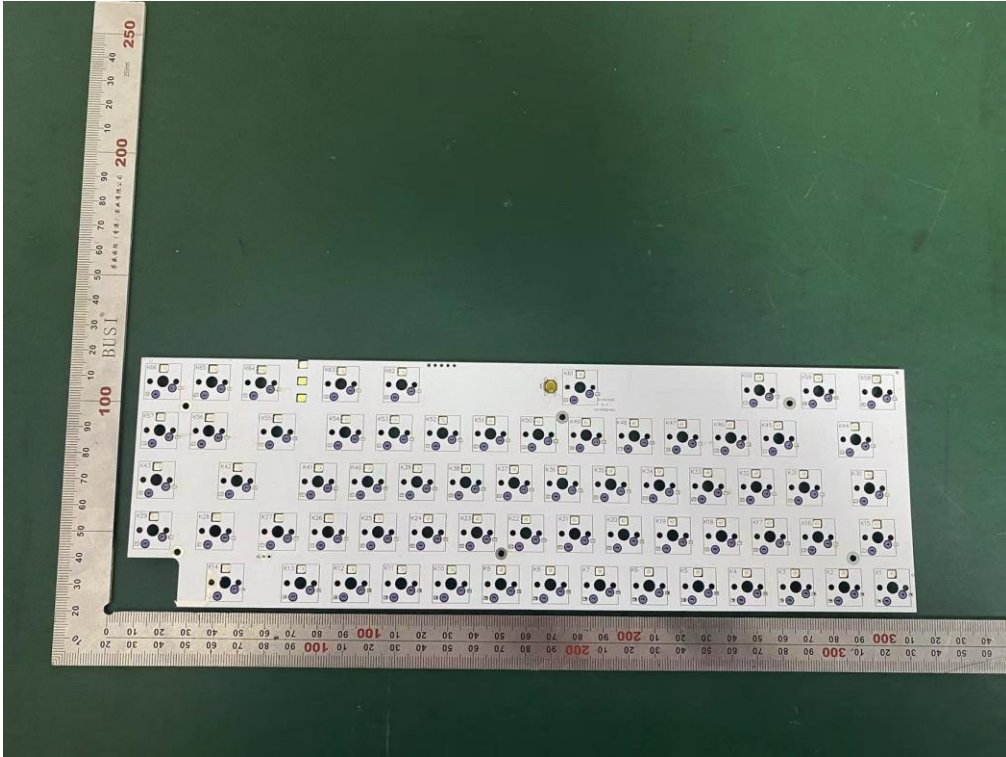


Internal Photos

M/N: R65

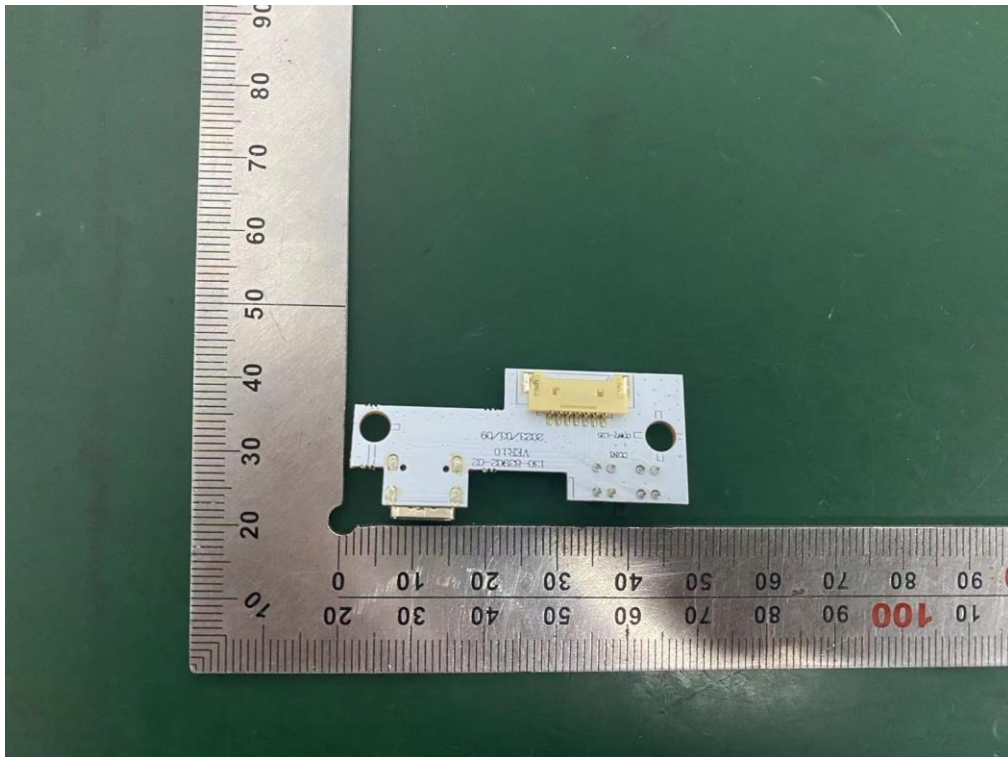
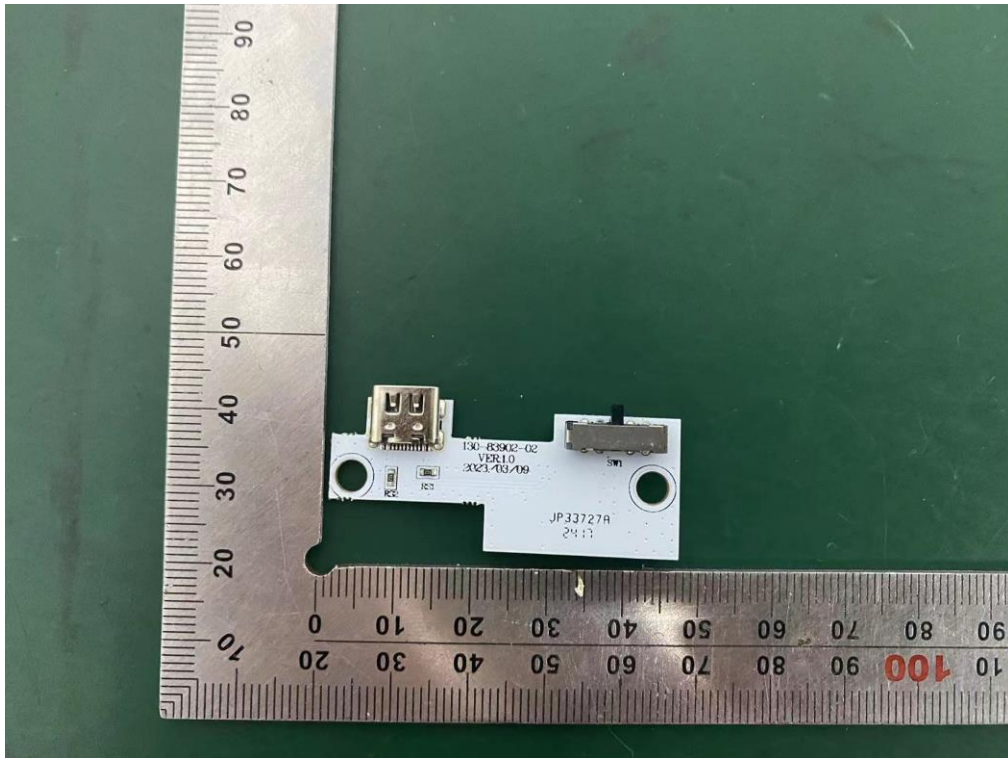


Internal Photos M/N: R65



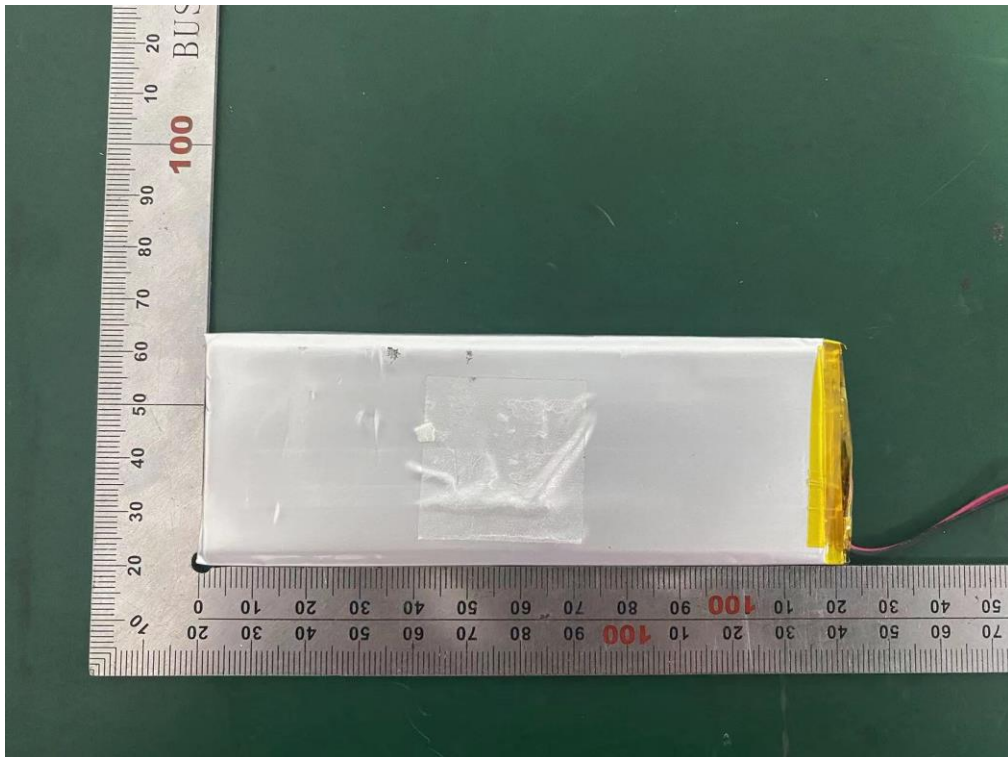
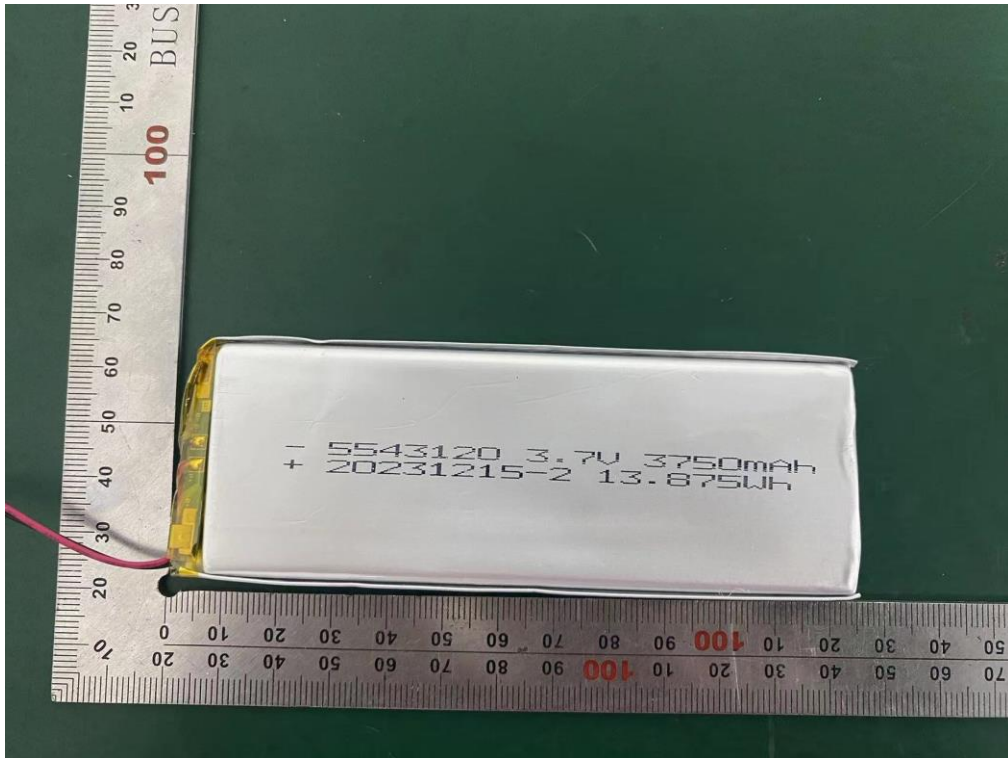
Internal Photos

M/N: R65



Internal Photos

M/N: R65



End of Test Report