

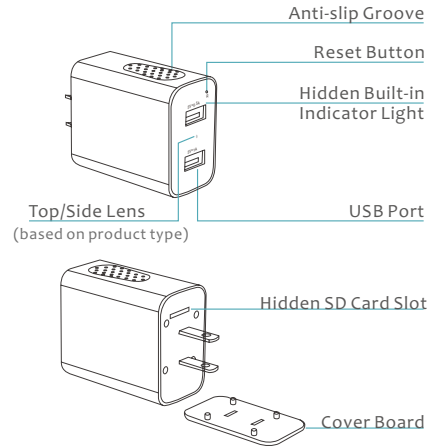


User Manual

WWW.LUOHECAM.COM

1 ▶

Getting to know WIFI Camera

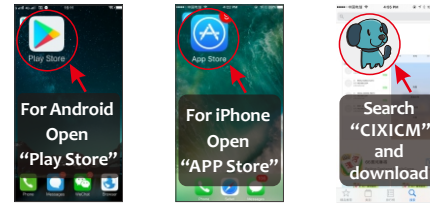


Indicator light:
If blue light stays on, the camera is connected to wifi.
If blue light flashes, the camera is not connected to wifi.
If red light stays on, the sd card is recognized.
If red light flashes, the sd card is not recognized.

2 ▶

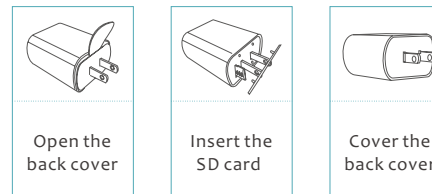
How do I download the APP ?

Enter the APP store of your Phone search for "CIXICM" and download the APP



Note: This camera doesn't support login web page or computer
When using the App, Please allow "CIXICM" access to location/notification/local network for the APP to work properly

How do I insert the SD card

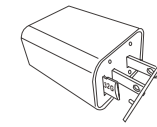


Please format the SD card on computer before inserting.

3 ▶

How to save the recorded video?

If you have inserted sd card into camera, the recorded video will automatically be saved in sd card. (maximum support 128G; the micro sd card is not included with this product)



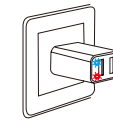
- * Please select a high-speed memory card;
- * The product cannot save recorded video without a memory card.
- * In loop recording mode, the camera automatically save a video per 10 minutes. In motion detection mode, the camera records a 2 minutes video after motion detected.

How do I start up the camera ?

Plug the camera in outlet, and it will start up.

8 seconds after the power is connected, the blue and red indicator light will both be on or flash, and the camera will start up.

After 1 minute, the red and blue indicators will go out and the product will automatically enter recording mode.



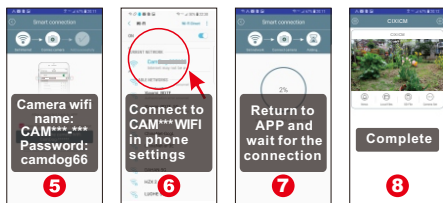
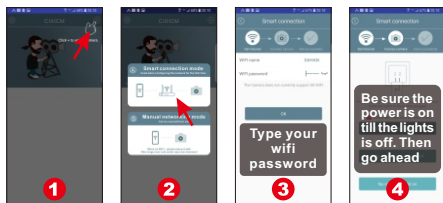
- In the case of inserting a memory card, the red indicator will stay on and go out after 1 minute.
- In the absence of a memory card, the red indicator light will flash for 1 minute and then go out.

4 ▶

How do I connect to the Internet ?

1. Please connect your (home/office...) WIFI in your phone's settings first.
 2. Open the CIXICM APP, click "+" to choose smart connection mode.
- And then follow tips to complete the WIFI configuration.

NOTE:The Camera does not currently support 5G WIFI

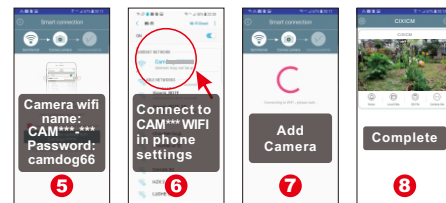
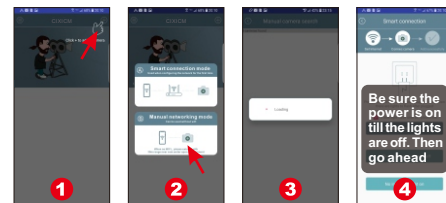


5 ▶

How to connect mobile phone to the camera without internet?

Open the CIXICM APP, Click the "+" to select the manual networking mode.
And then Follow tips to add the camera to the APP list.

Camera WIFI name: CAM***.*****



6 ▶

About charging

Heating will occur when charging a mobile phone, which is a normal phenomenon.

Note: Please do not use this product to charge 2 mobile phones at the same time. If there is any blue or blue screen during the charging process, unplug the camera and wait for the temperature to return to normal.

Operating Temperature: -10°C-25°C
Temperature rise is normal when charging devices on the product



Accessory

Card Reader, Cover Board Removal Tool, User Manual.

if you have any issue, please feel free to contact us. We have a strong team and we are here to serve you.

For your better experience, please put the camera within 20 feet from the wireless router and make sure no barriers in between.

7 ▶

FQA

How to reset camera ?

- There are two ways for resetting.
- 1. Open APP, Follow "Camera Set"-"Restore factory settings"-"OK", the red and blue lights will flashes 5 times and go off, the camera is reset, and then the camera will automatically restarts after 2 minutes.
- 2. Use a pin to click the small hole with "R" icon on the case. The red and blue lights will flashes 5 times and go off, the camera is reset. then the camera will automatically restart after 2 minutes.

Can I log this camera in web page/computer?

Sorry, this camera only works with IOS and Android mobile phone.

How do I set the time ?

There is no need to set the time. It will automatically switch to the time on your phone after connected.

How do I read videos stored on the micro sd Card ?

Remove the micro sd card and use a card reader to connect to your computer, and then read the videos.

How do I play recorded videos ?

Please play videos with Media Player, VLC or other players.

Can I put the camera under sunlight?

Please do not let the camera lens face sunlight or other light beam, as it will cause the screen to become unclear. In severe cases, the product will be damaged.

If the power is suddenly cut off, can the camera still keep the recorded video ?

Sudden power loss may affect the playback of the last recorded video but will not affect other videos saved on the SD card.

What if the camera becomes hot when charging the phone ?

Try not to charge devices on the camera during video recording. What if the picture is stuck or delayed ?

Depending on the network, the picture may become stuck or delayed. Such phenomena are related to the network.

8 ▶

This device complies with part 15 of the FCC Rules. Operation is subject to the following two conditions: (1) This device may not cause harmful interference, and (2) this device must accept any interference received, including interference that may cause undesired operation.

Any Changes or modifications not expressly approved by the party responsible for compliance could void the user's authority to operate the equipment.

Note: This equipment has been tested and found to comply with the limits for a Class B digital device, pursuant to part 15 of the FCC Rules. These limits are designed to provide reasonable protection against harmful interference in a residential installation. This equipment generates uses and can radiate radio frequency energy and, if not installed and used in accordance with the instructions, may cause harmful interference to radio communications. However, there is no guarantee that interference will not occur in a particular installation. If this equipment does cause harmful interference to radio or television reception, which can be determined by turning the equipment off and on, the user is encouraged to try to correct the interference by one or more of the following measures:

- Reorient or relocate the receiving antenna.
- Increase the separation between the equipment and receiver.
- Connect the equipment into an outlet on a circuit different from that to which the receiver is connected.
- Consult the dealer or an experienced radio/TV technician for help.

This equipment complies with FCC radiation exposure limits set forth for an uncontrolled environment. This equipment should be installed and operated with minimum distance 20cm between the radiator & your body.