

PN-W32

尺寸: 70 * 105mm

105克铜版纸

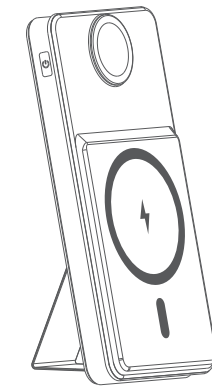
折页

彩色双面印刷

风琴折

LATIMERIA

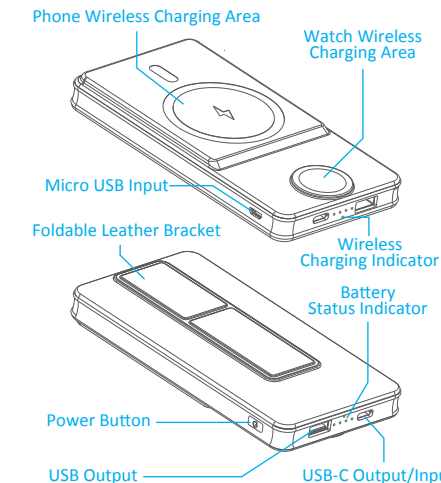
10000mAh
Magnetic Portable Power Bank



PN-W32
User Manual

Thank you for using our product. To provide an easy user experience, we have provided detailed information about the product and instructions for use. Please read the instructions carefully before using this product so that you can use it correctly.

1. Product Details



2. Product Parameters

Micro USB Input	DC 5V/2.4A
USB-C Input	DC 5V/2.4A
USB-C Output	DC 5V/3A
USB Output	DC 5V/3A (Max)
Battery Capacity	10000mAh
Wireless Charging Output	2.5W (Watch); 5W (Phone)

3. Product Features

1. Exclusive design, fashionable and beautiful.
2. Original A-class polymer battery provides safety and stability.
3. Wireless output, suitable for all iPhone with magnetic suction.
4. Large-capacity design, worry-free travel life.

4. Package Includes

- 1 * 2 in 1 Power Bank
- 1 * USB-C Charging Cable
- 1 * Velvet Storage Bag
- 1 * User Manual

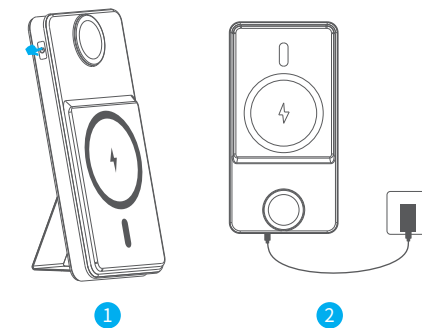
5. Instructions:

1) Turn on/off

Press the power button to turn on the power bank, the LED battery indicator lights up, if there is no charging device connected, the power bank will automatically shut down after 30 seconds. Press the power button twice to shut down the power bank.

2) Charging the power bank

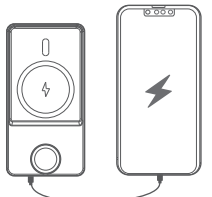
Plug the USB-C cable or the Micro-USB cable into the power bank, and the other end into the port of the charger. The LED battery indicator will flash when charging, and the LED battery indicator will stay on when fully charged.



3) Charging the power bank

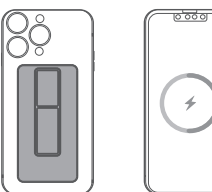
*Cable charging

Plug into your device, then press the power button to turn on the power bank, and the LED battery indicator lights up.



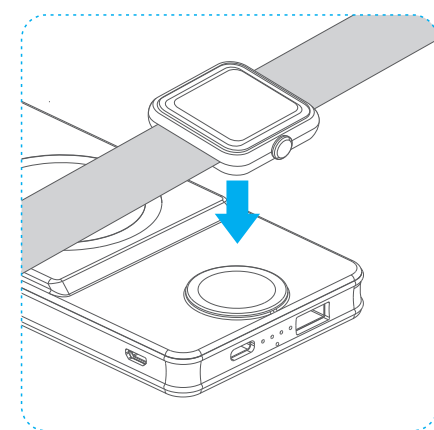
*Wireless charging

Attach your phone to the wireless charging area of the power bank, then press the power button to charge your phone. The magnetic function is only compatible with iPhone 12 series and later.



4) Charge your watch

Place your Apple watch on the watch charger, and press the power button to charge. The watch charger is compatible with all Apple Watch models.

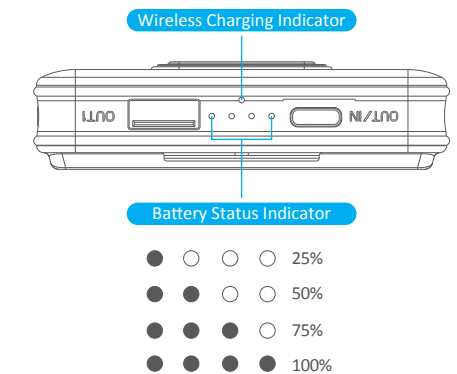


5) Wireless Charging Indicator light status

Blue light: Watch charging
Green light: Wireless charging
Blue/Green light flash: Foreign object detection alarm

Power Indicator light status

Smart Indicators show the power status as 25% -50% -75% 100%



6. Product Maintenance

To ensure the maximum efficiency of this product, please note the following:

1. Keep away from wet corrosive substances.
2. Do not use chemicals to clean this product.
3. When the product is not used for a long time, please charge it every six months.

Tips

1. Not compatible with non-magnetic phone cases.
2. Magnetic function is only compatible with iPhone 12 series and later.
3. The watch charger is compatible with all Apple Watch models.
4. When the portable charger is charging or discharging, some heat may be generated due to the energy loss during the transmission process, which is a normal phenomenon.

7. Warning

1. This power bank is suitable for DC 5V/3A charging devices. Use of a device beyond this specification may cause damage to this product.
2. Please do not disassemble or modify the power bank.
3. Keep away from fire and keep dry to prevent failures.
4. Please do not use the power bank at high temperatures (>45°C).

5. Please connect a device that conforms to the output specifications of this product.
6. If you see any bulging, swelling, leakage, or other abnormality from the power bank, stop using it immediately.

1. Every LATIMERIA Product is provided with 12 months of warranty and lifetime technical support.
2. If you have any problems with our products or services, please contact our dedicated customer service at uslatimeria@gmail.com. We usually get back to you within 24 hours during business days.

FCC Statement

Changes or modifications not expressly approved by the party responsible for compliance could void the user authority to operate the product. NOTE: This equipment has been tested and found to comply with the limits for a wireless power charger, pursuant to Part 18 of the FCC Rules. These limits are designed to provide reasonable protection against harmful interference in a residential installation. This equipment generates, uses and can radiate radio frequency energy and, if not installed and used in accordance with the instructions, may cause harmful interference to radio communications. However, there is no guarantee that interference will not occur in a particular installation. If this equipment does cause harmful interference to radio or television reception, which can be determined by turning the equipment on and on, the user is encouraged to try to correct the interference by one or more of the following measures:

- Reorient or relocate the receiving antenna.
- Increase the separation between the equipment and receiver.
- Connect the equipment into an outlet on a circuit different from that to which the receiver is connected.
- Consult the dealer or an experienced radio/TV technician for help.