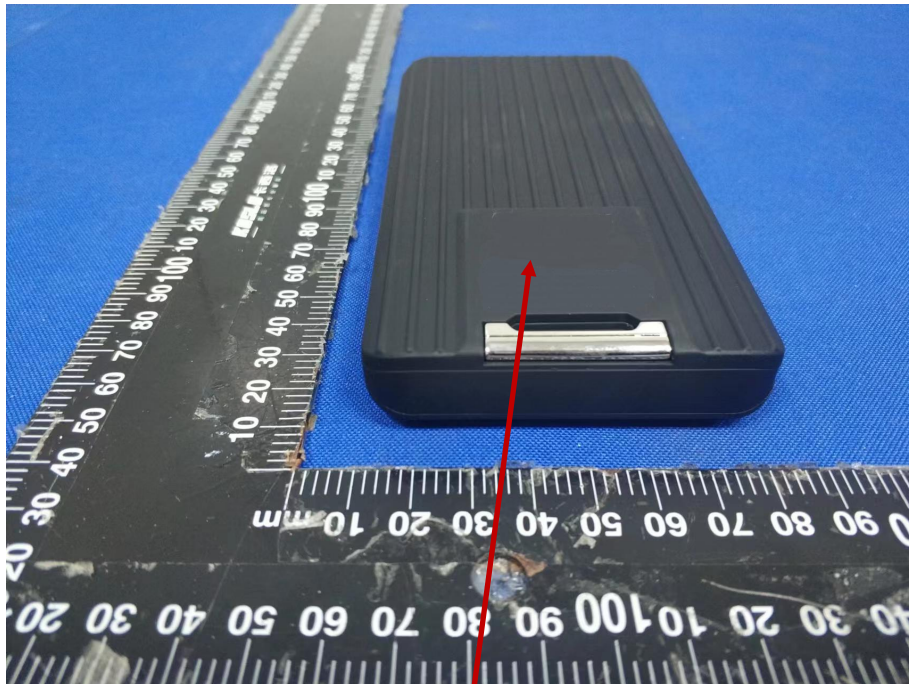


Lable:



Magnetic Wireless Power Bank

FCC ID:2A4LH-PN-W28

Capacity:10000mAh /3.7V/37Wh

Type-C Input: DC 5V/2.4A 9V/2A 12V/1.5A

Type-C Output:DC 5V/2.4A 9V/2A 12V/1.5A

Wireless Output:5W 7.5W 10W    Made in China

