



RTANT

东莞市安特通信有限公司

Rtant Communications Co., Ltd

# 天线调试&测试报告

Antenna Commissioning & Test Report

客户：瑞格尔

项目：B2F

天线工程师：李湖南

日期：2024-4-5

版本：V1.0

项目负责人：姜磊15899911229



# 目录

一. 项目调试简介

二. 实验室测试环境及设备

三. 天线匹配电路

四. 暗室坐标标示

五. 天线摆放位置

六. 无源数据

七. 有源数据

八. 联系方式



RTANT



# 项目调试简介

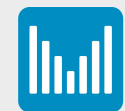


RTANT

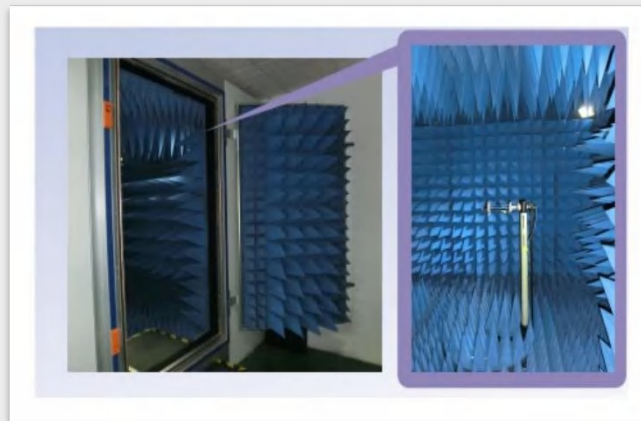
整机类型				
天线种类及频段信息	天线种类	频段信息	天线形式	匹配改动
	WIFI/BT	2400-2500MHz/5150-5850MHz		否
天线描述	WIFI/BT天线 φ1.13 灰色 L=100MM 一代端子&端子口朝下			
天线材质	FPC Antenna			



# 实验室测试环境及设备



RTANT



测试项目	测试设备
S11、S12、VSWR、LOSS	网络分析仪E5071B、E8753D
Efficiency、Gain、3D Radiation Pattern	Satimo SG16暗室、台湾十大7*4*3暗室、E5071B、二代人头
TRP、TIS	Satimo SG16暗室、台湾十大暗室、CMW500、二代人头

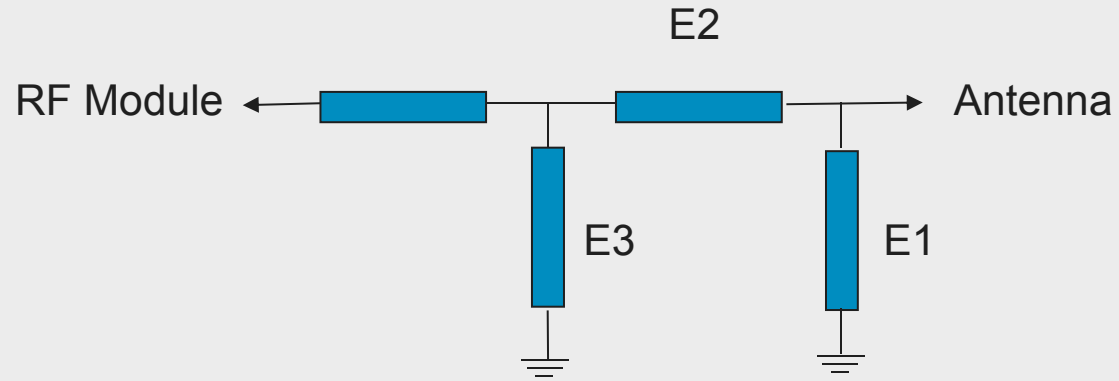
备注：本项目的调试&测试用的设备标示为蓝色



# 天线匹配电路



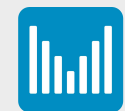
RTANT



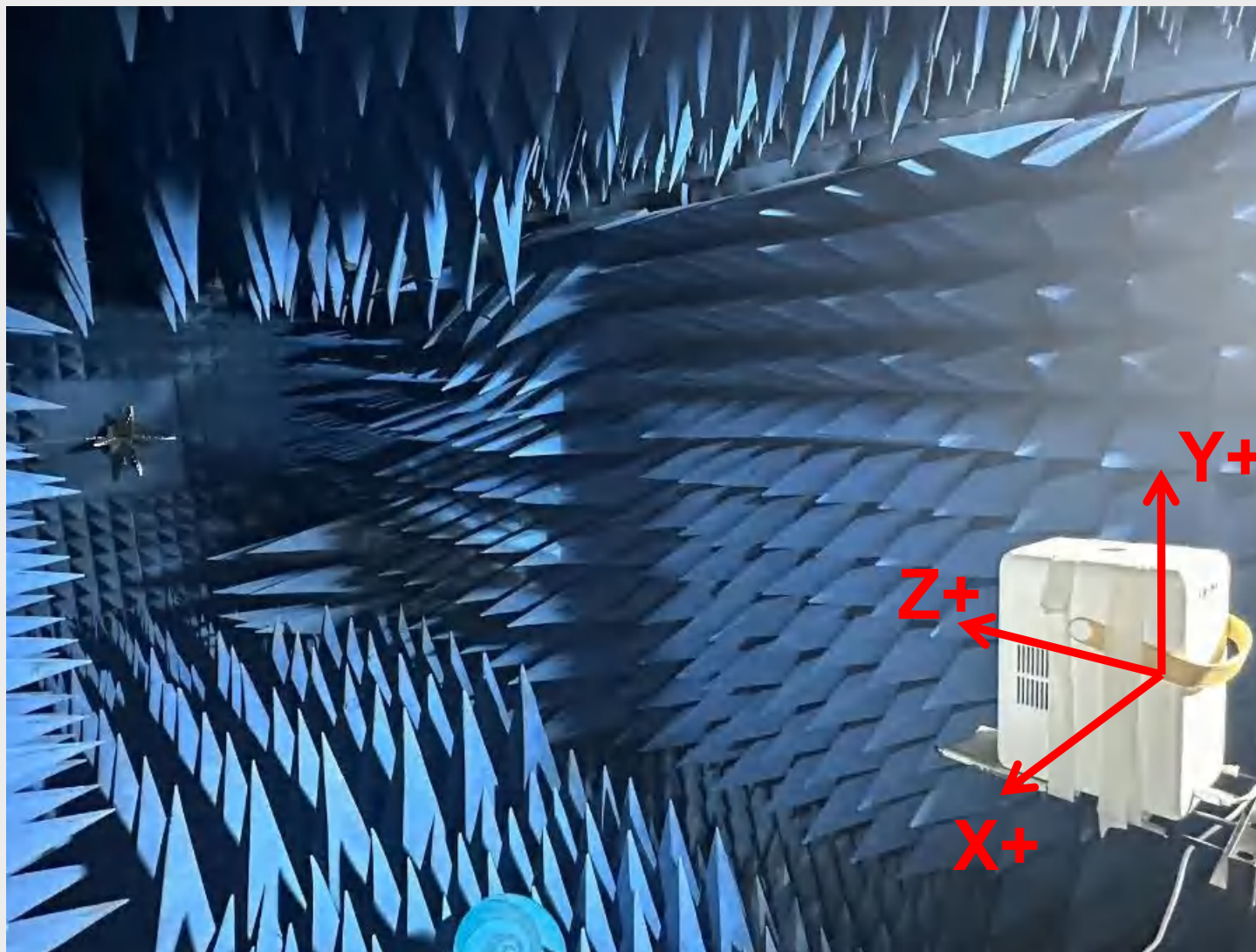
	Element	Value
	E1	无
	E2	0欧
	E3	无



## 四. 暗室坐标标示

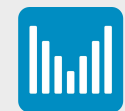


RTANT

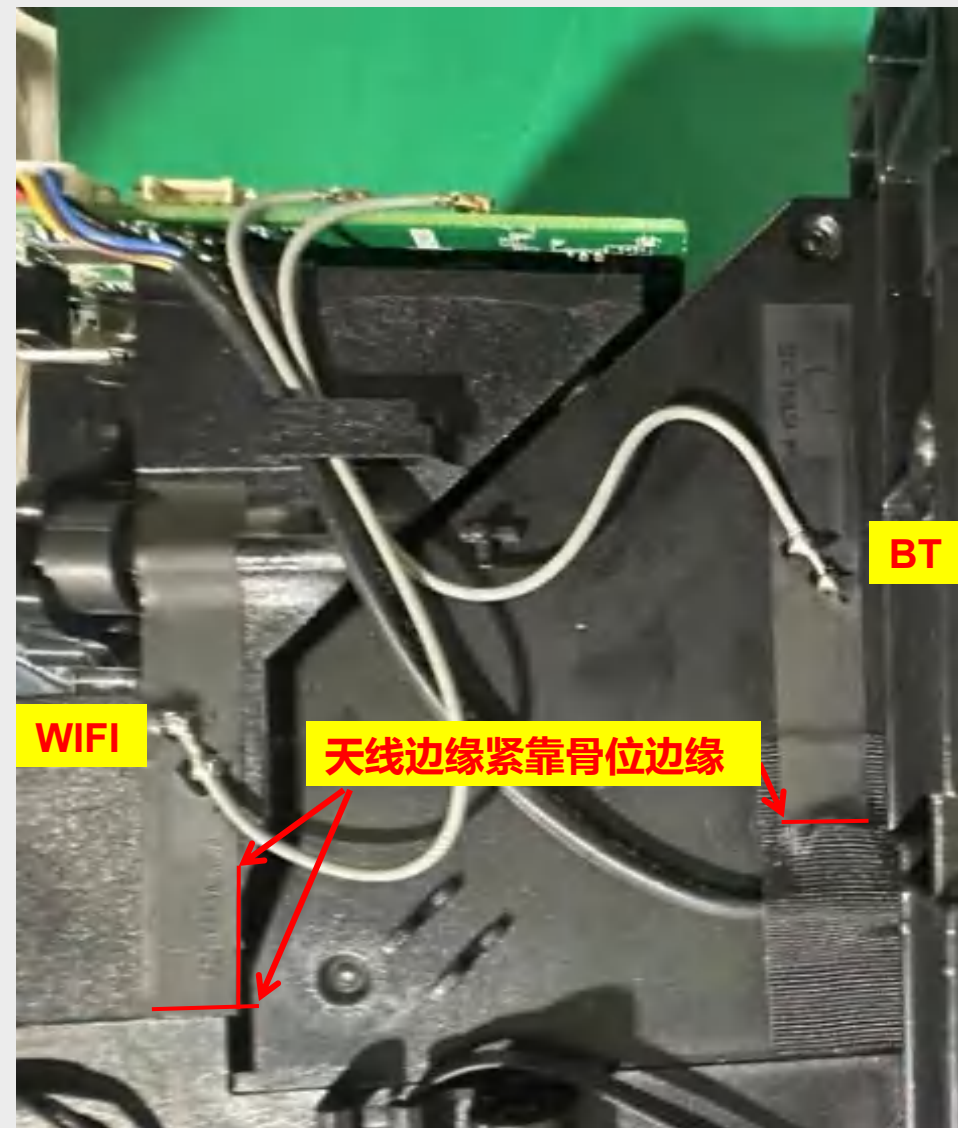
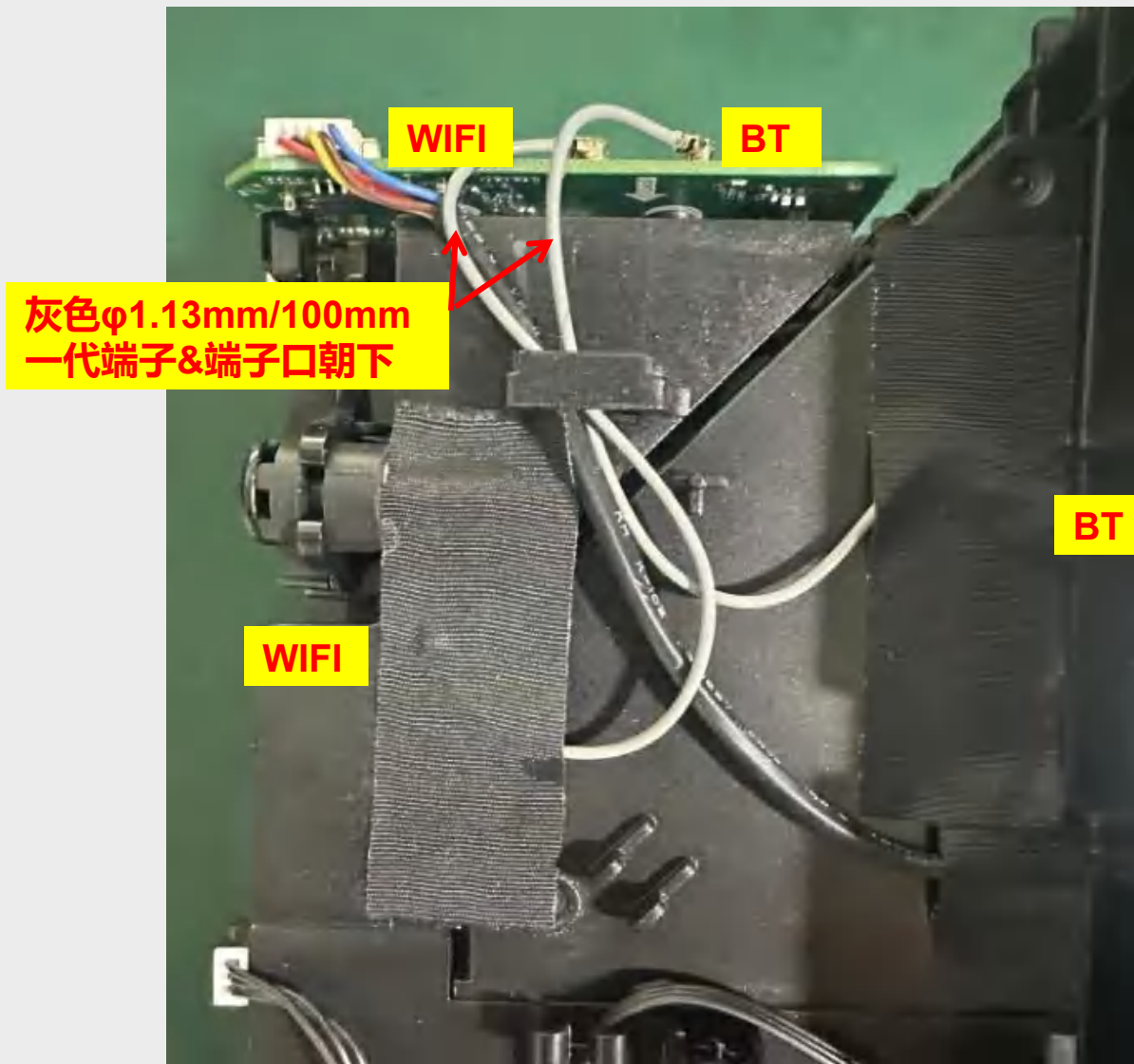


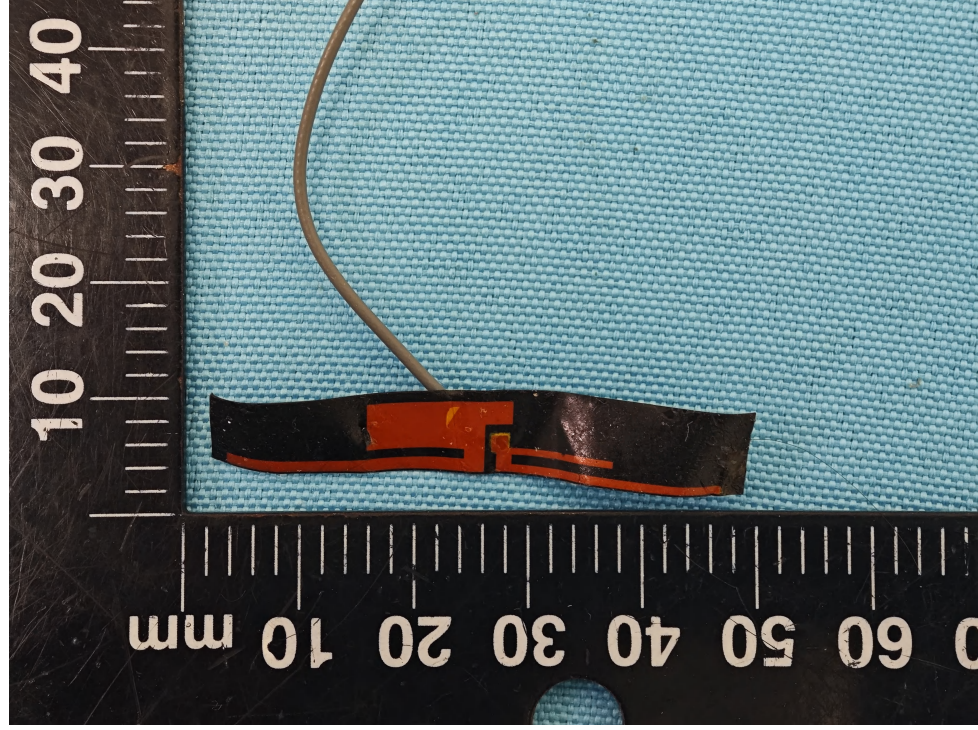
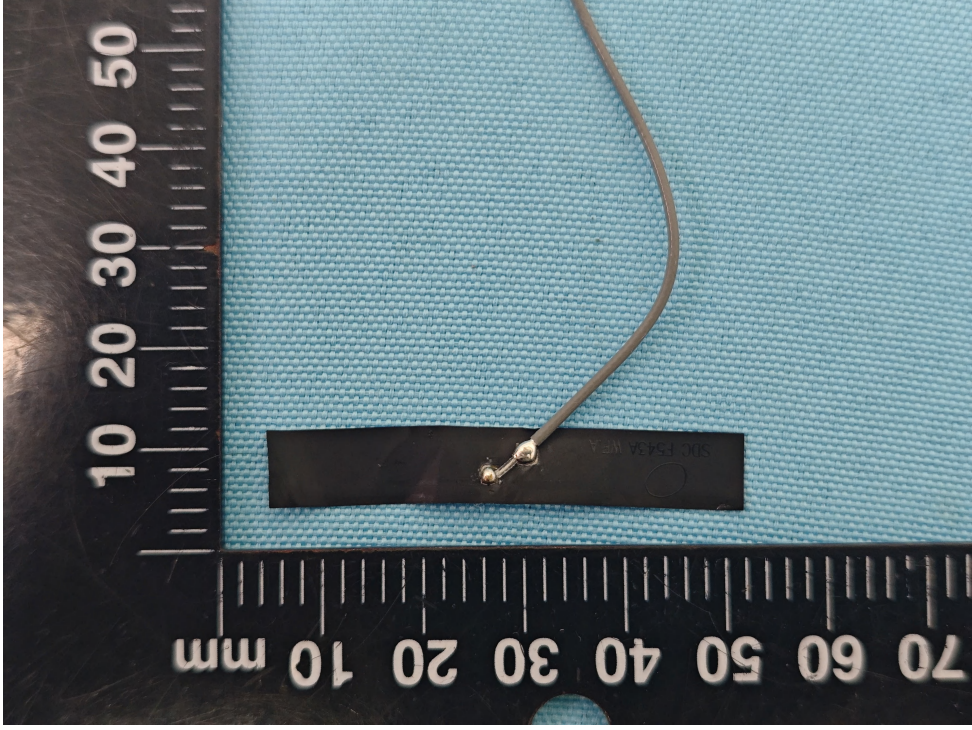


## 五. 天线摆放位置



RTANT



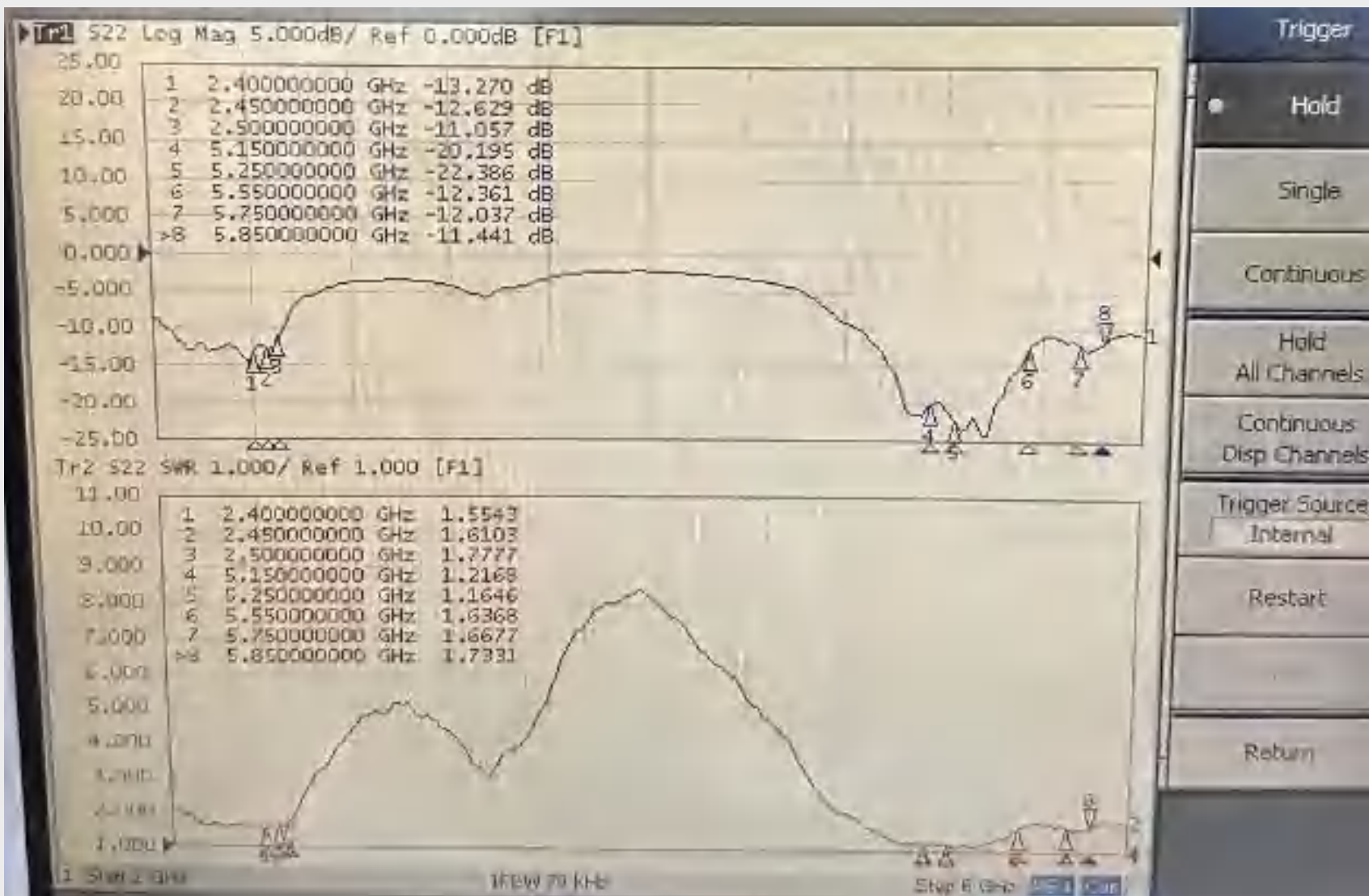






# 六. 无源数据

## R-LOSS.VSWR (WIFI)



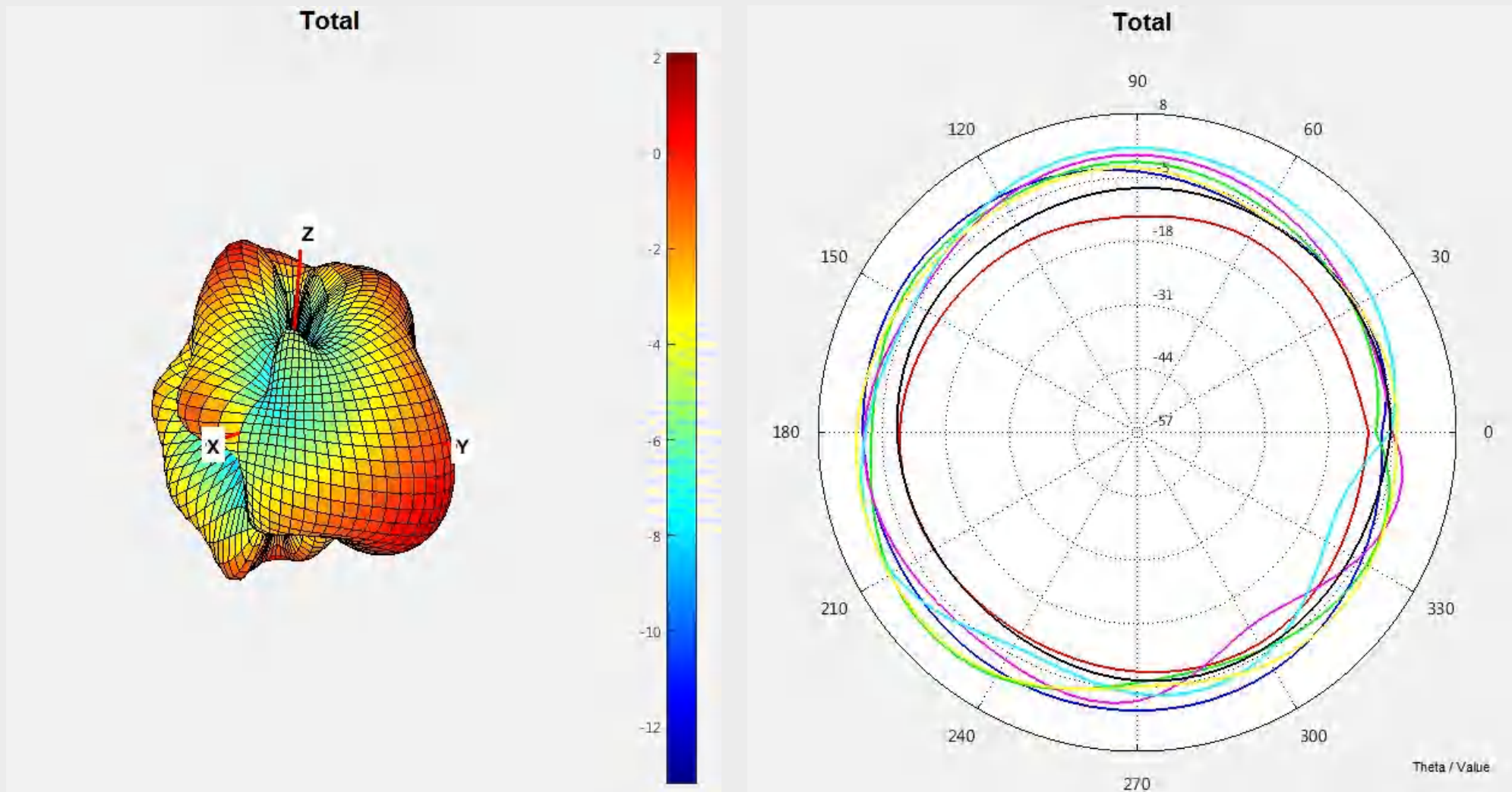
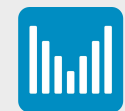


## Effi / Gain (WIFI)

Frequency	Efficiency (%)	Gain (dBi)	Frequency	Efficiency (%)	Gain (dBi)
2.4GHz	56.45	1.22	5.15GHz	49.75	3.1
2.41GHz	56.9	1.49	5.2GHz	52.39	3.25
2.42GHz	57.95	1.52	5.25GHz	50.61	2.74
2.43GHz	55.33	1.34	5.3GHz	53.31	2.92
2.44GHz	57.13	1.48	5.35GHz	49.52	2.75
2.45GHz	57.01	1.18	5.4GHz	48.67	2.63
2.46GHz	56.98	1.28	5.45GHz	49.2	3.4
2.47GHz	58.88	1.2	5.5GHz	46.83	3.53
2.48GHz	56.09	0.86	5.55GHz	55.05	3.18
2.49GHz	54.32	1.19	5.6GHz	55.22	2.62
2.5GHz	53.4	1.32	5.65GHz	53.72	3.15
			5.7GHz	56.88	2.56
			5.75GHz	55.09	2.43
			5.8GHz	52.37	1.08
			5.85GHz	54.22	1.33

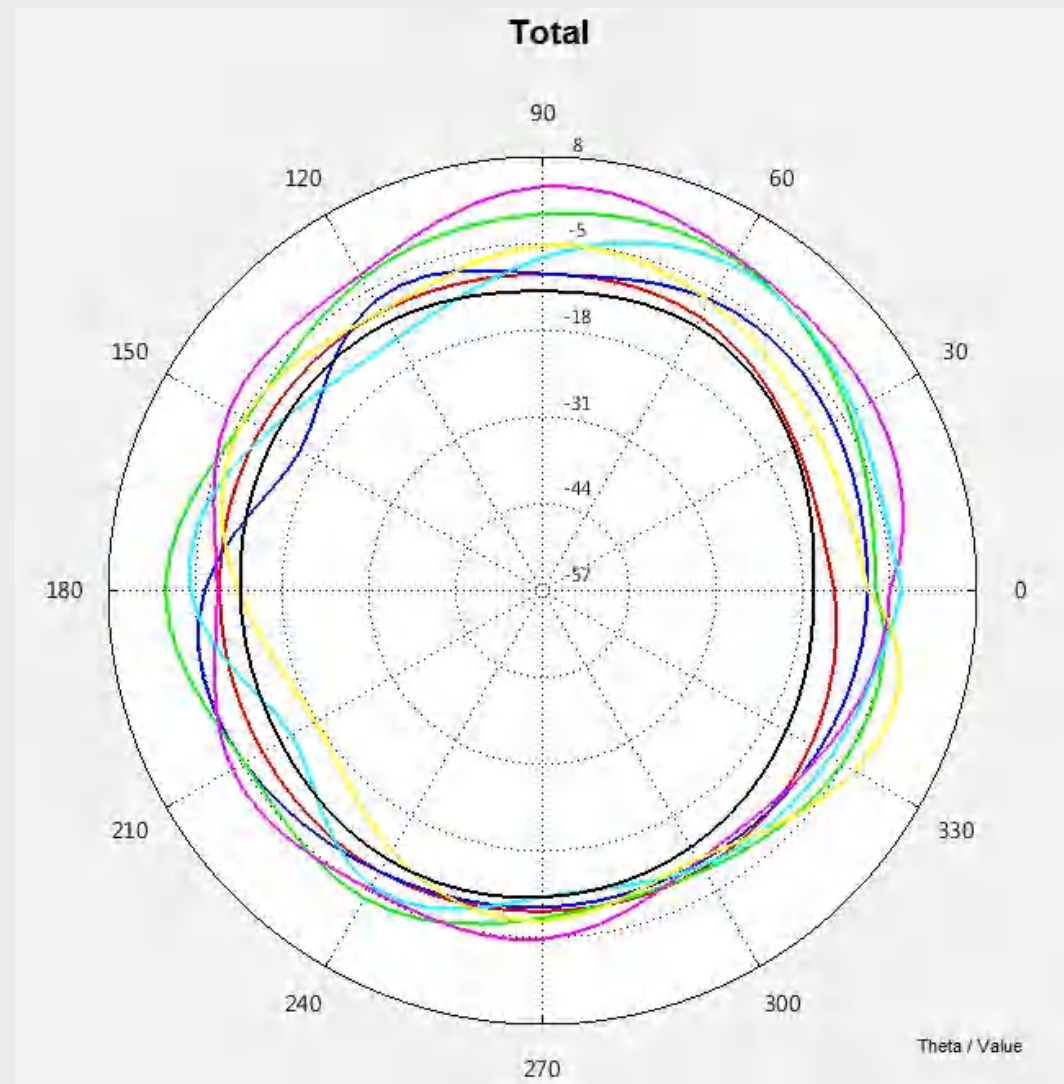
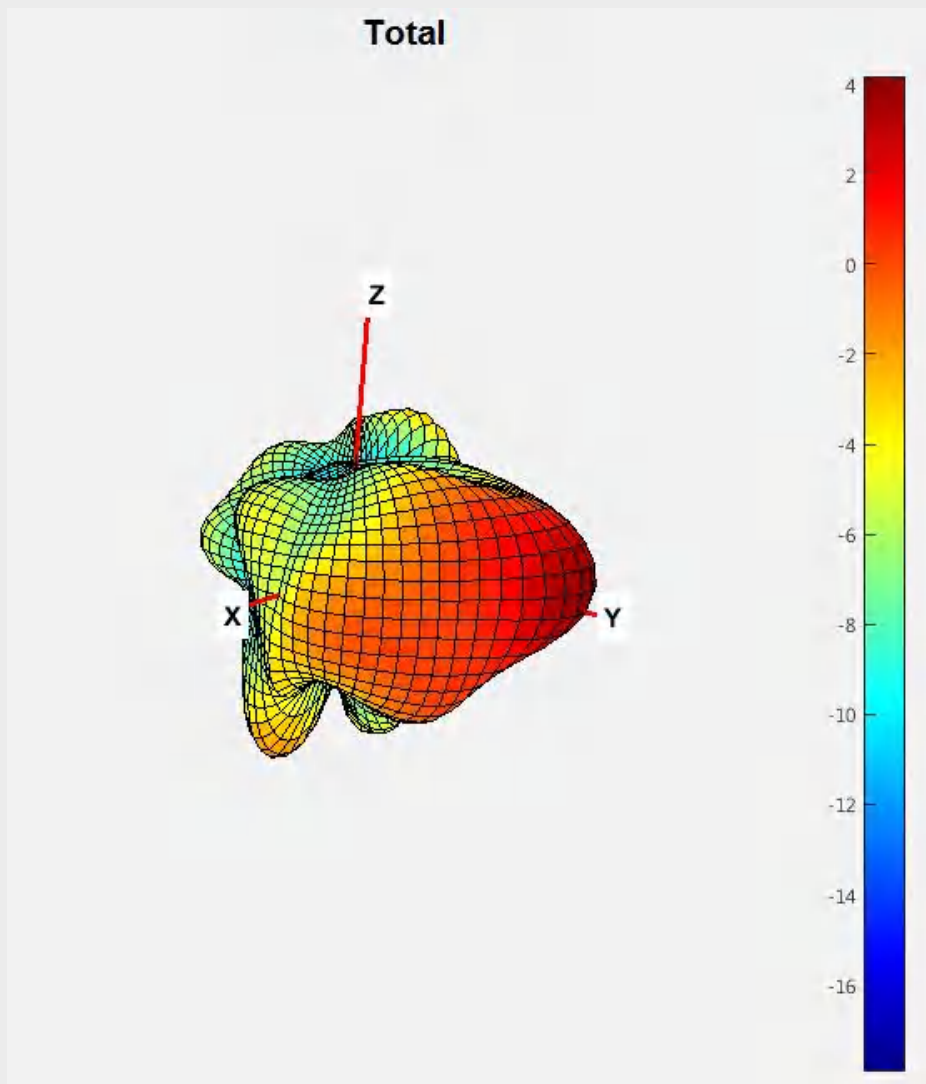
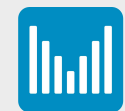


# 苹果图 (WIFI 2450MHz)





# 苹果图 (WIFI 5500MHz)



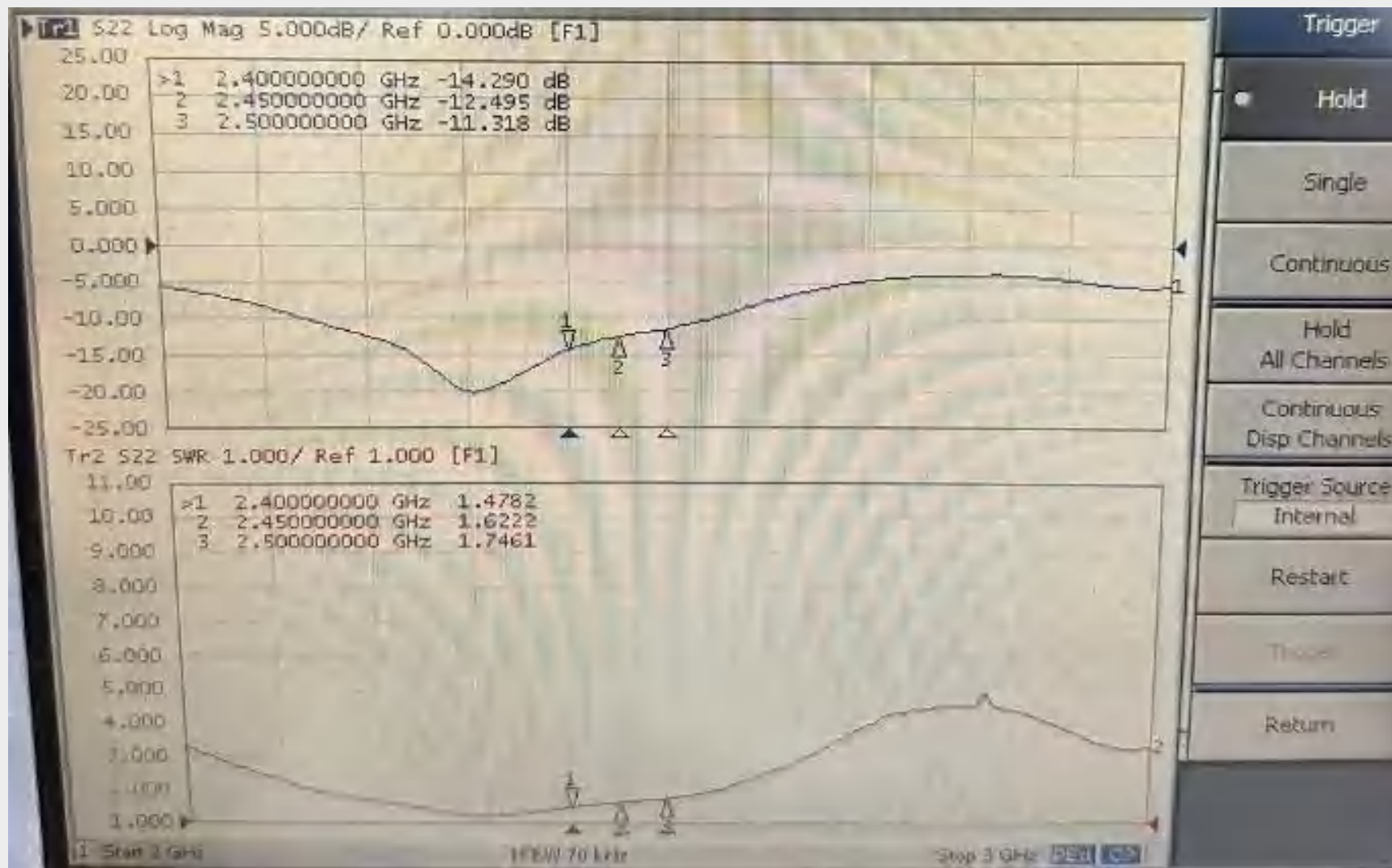


无源数据

# R-LOSS.VSWR (BT)



RTANT





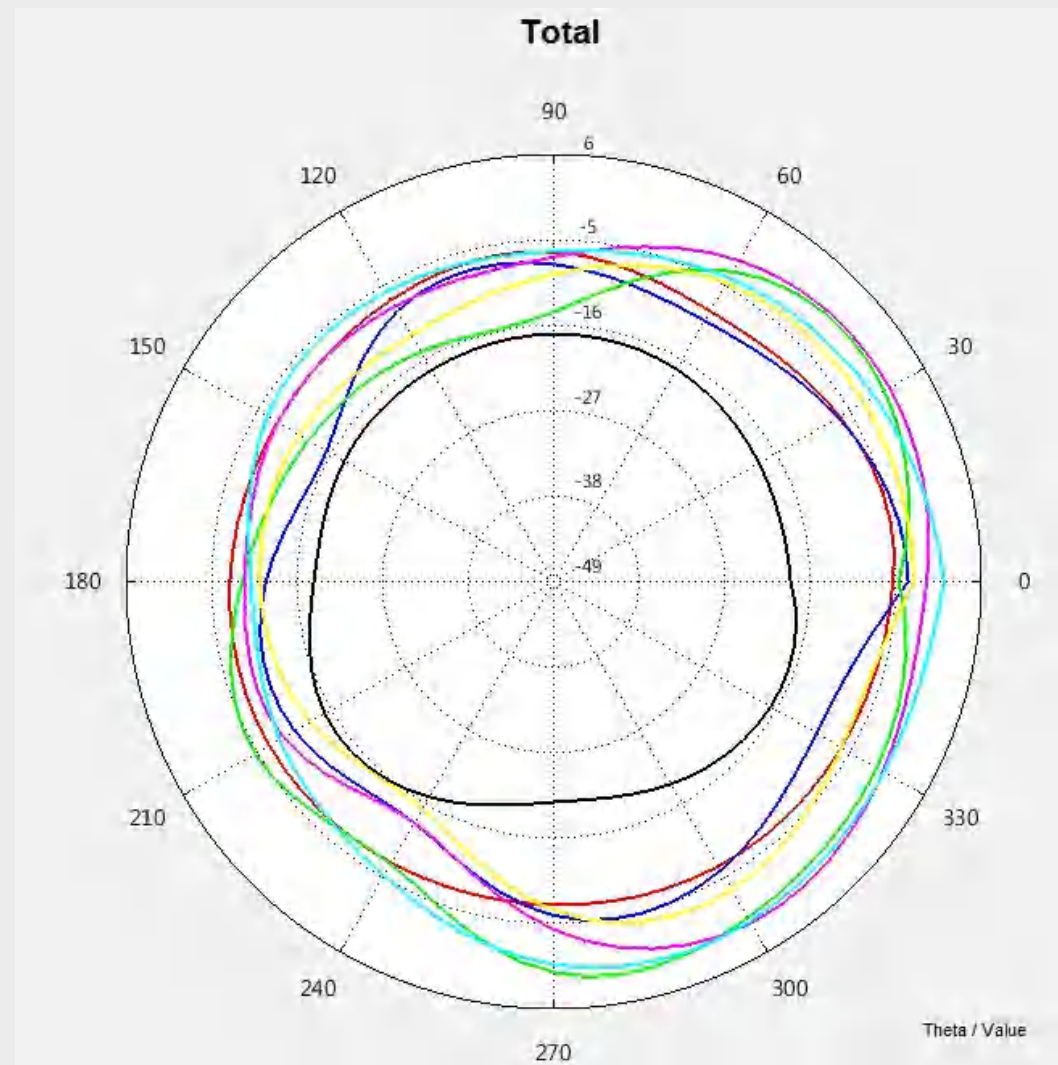
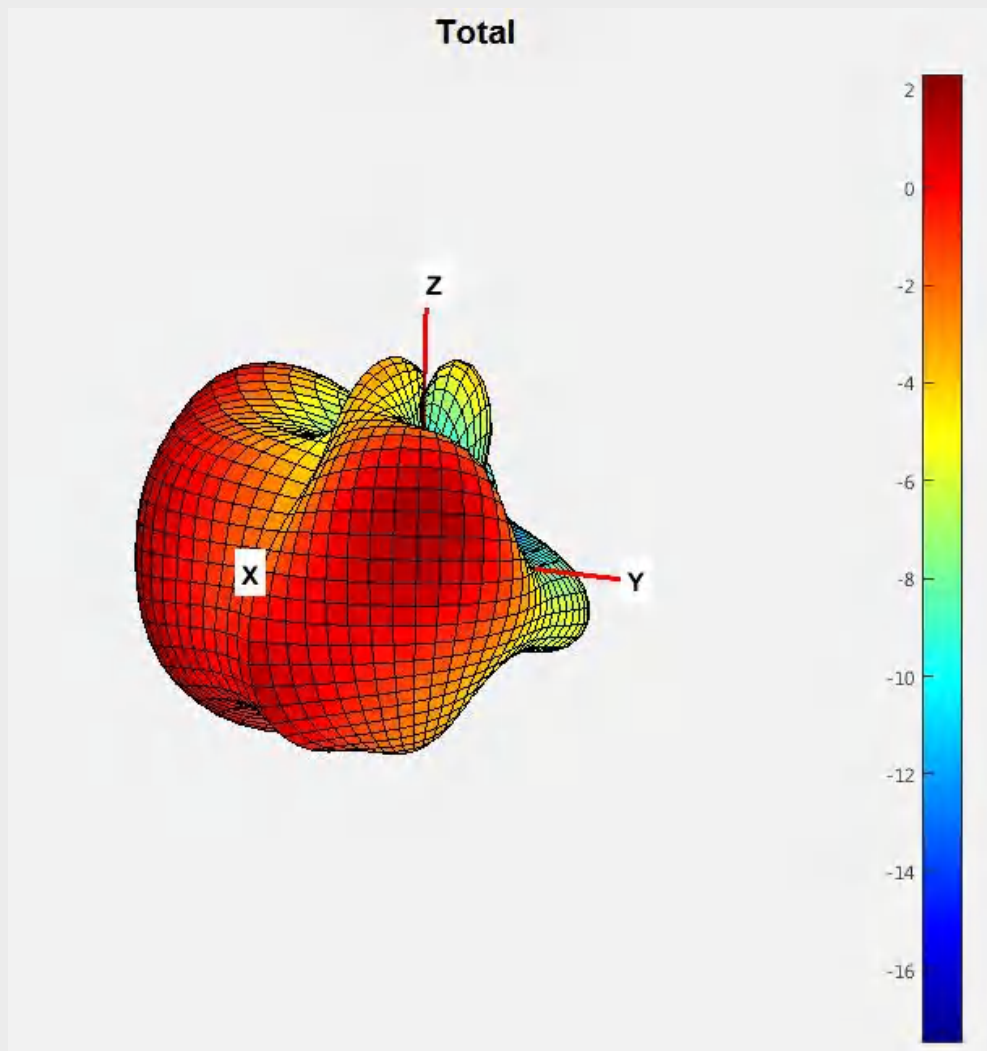
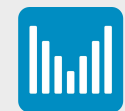
## Effi / Gain (BT)



Frequency	Efficiency (%)	Gain (dBi)
2.4GHz	52.55	2.47
2.41GHz	52.7	2.44
2.42GHz	55.07	2.18
2.43GHz	54.08	1.98
2.44GHz	55.8	1.99
2.45GHz	55.48	1.76
2.46GHz	54.58	1.99
2.47GHz	56.57	2.07
2.48GHz	56.29	2.04
2.49GHz	53.73	2.48
2.5GHz	52.02	2.78



# 苹果图 (BT 2450MHz)



## 六. 有源数据



TEST DATA FOR RADIATED TESTING						
Band	模式 Mode	信道 Channel	速率 (Mbps)	TRP	速率 (Mbps)	TIS
2.4G	802.11b	1	11M	15.27	11M	-80.67
		6		15.57		-80.96
		13		15.86		-80.73
5.8G	802.11a	36	6M	15.67	54M	-75.62
		149		16.04		-76.12
		165		15.82		-75.84



## 联系方式

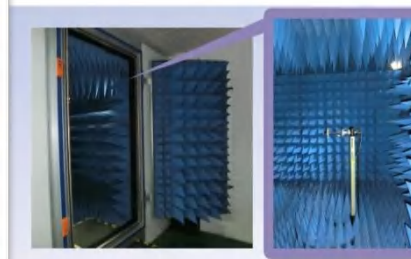
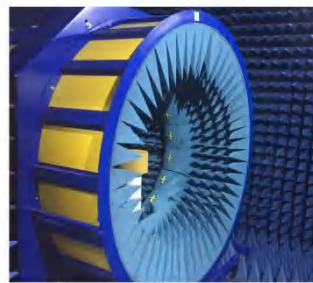


成立  
11年

专注  
无线

设计  
研发

制造



更多了解 <http://www.rtant.com>

联系方式 - 姜磊

Mob: 15899911229 Email: [jl@rtant.com](mailto:jl@rtant.com)

东莞 (厚街) - 上海 (浦东新区)



**RTANT**

**Thank you for your trust in Rtant**