

***SEALIGHT™***

For more information and FAQs, please refer to the FAQ of the App.

***SEALIGHT™***

***UNDERGLOW***  
***AMBIENT LED STRIP***

User Manual

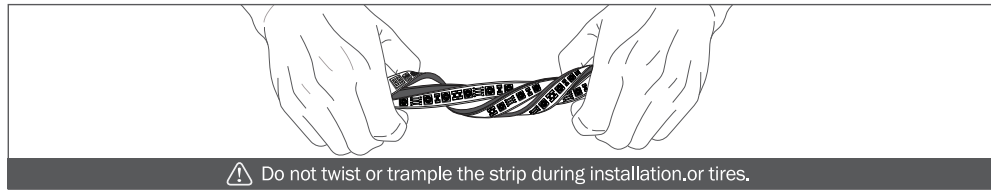
Model: SL9CIL19200

## PRODUCT DESCRIPTION

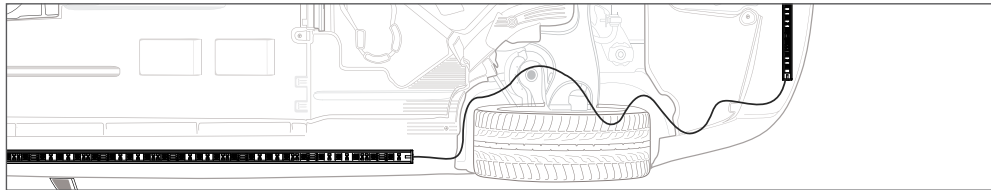
Thank you very much for purchasing SEALIGHT. This is an RGB Underglow ambient LED strip. With the APP that comes with the product, users are able to get colors they want.

## RESTRICTIONS AND GUIDELINES

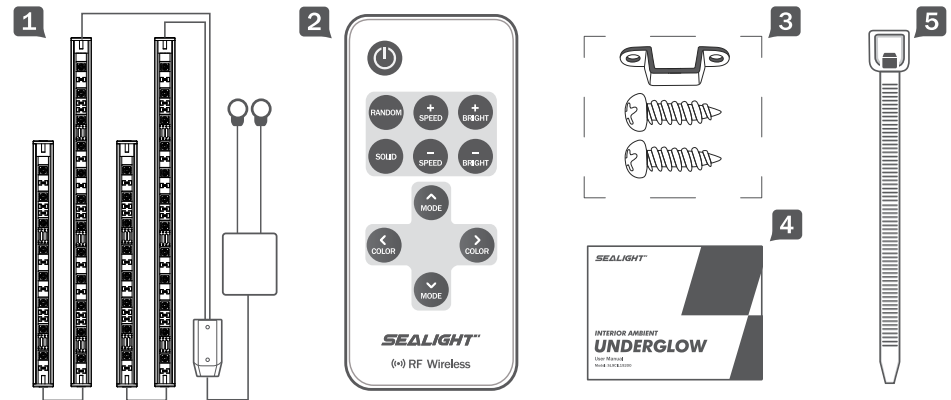
1. Do not install the Underglow ambient LED strip near water or in a corrosive location.
2. Do not twist or trample the strip during installation.



3. Bind the LED strip securely to prevent them from being trapped in the crankshaft or tires



## BEFORE INSTALLATION



1. LED strip \*4

2. Remote control \*1

3. Screw kit \*16

4. Manual \*1

5. Cable tie \*16



## DOWNLOAD APP

Download and install the App from App store (for iOS) or Google Play (for Android).  
Tip: The App is compatible with the following phone systems: iOS 9.0 and above, Android 5.0 and above.



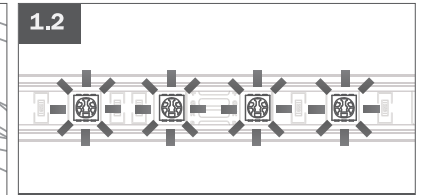
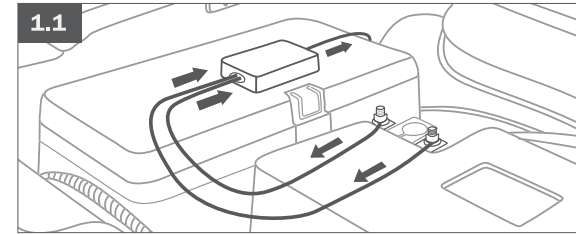
## CONNECT WITH THE APP

1. Turn on the Bluetooth on your phone and make sure the LED strip is powered on.
2. Turn on the App and tap the "+" icon.
3. Select the device from the device list.



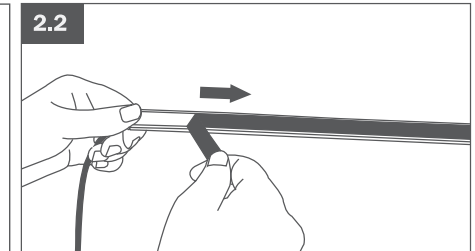
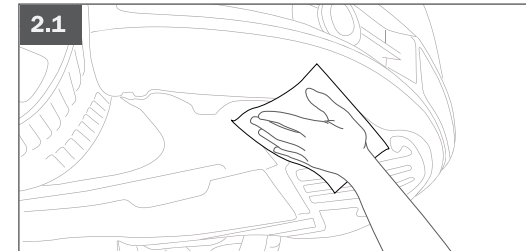
## STEPS

1. Before installation, power on the LED strip and try to adjust the light using the App.

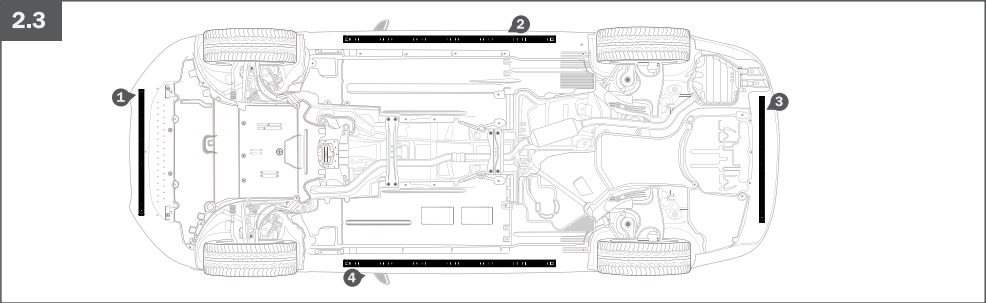


Try to adjust the light using the App

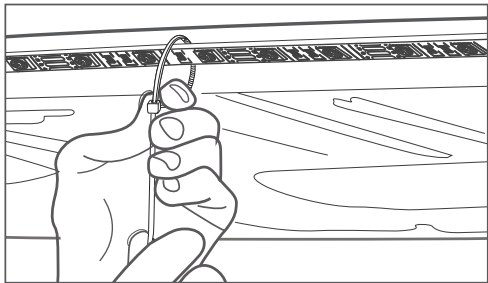
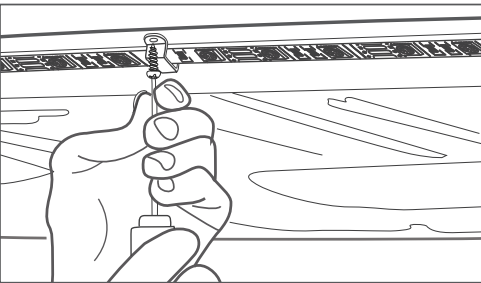
2. Clean the surface where the LED strip is to be installed and wait until it is dry. Remove the red protective film and paste it on the clean, dry surface.



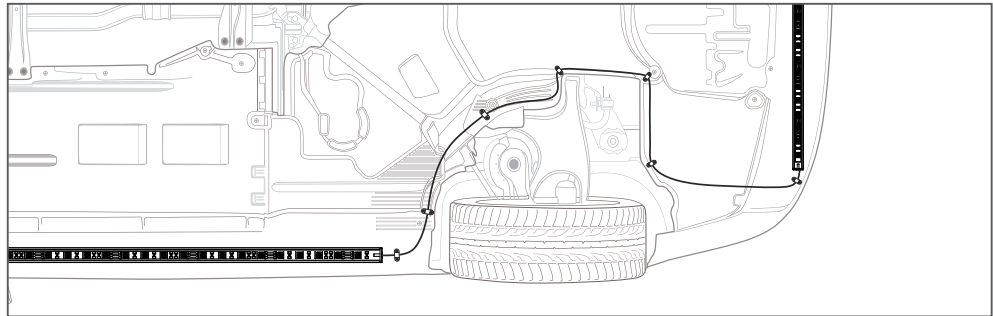
2.3



3. Secure the LED strip with the matching parts.

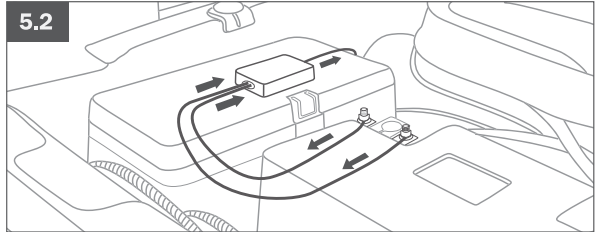
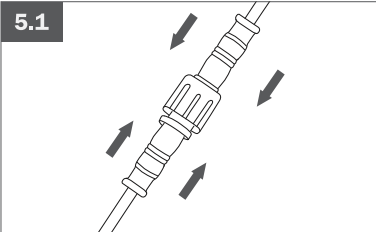


4. Bind the lights securely to prevent them from being trapped in the crankshaft or tires.

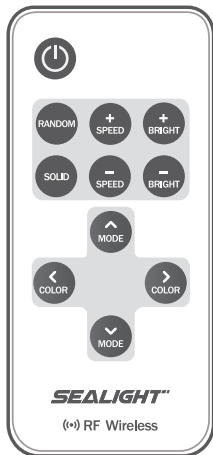


5.1 Bind the lights securely to prevent them from being trapped in the crankshaft or tires

5.2 Connect the LED Strip to the box and turn on it.



## CONTROLLED VIA THE REMOTE CONTROL



| Buttons         | Functions                           |
|-----------------|-------------------------------------|
|                 | Shut down, restore factory settings |
| RANDOM          | Random switch                       |
| SOLID           | Keep it on                          |
| SPEED+/SPEED-   | Switching speed                     |
| BRIGHT+/BRIGHT- | Brightness increase and decrease    |
| COLOR+/COLOR-   | Switch color                        |
| MODE+/MODE-     | Switch light mode                   |

## FAQS

**The light is not on:** Check whether the light is properly wired and the interface is tightly inserted.

### Bluetooth connection fails:

1. Make sure your Bluetooth is turned on;
2. Incompatibility. In this case please replace your mobile Phone or update your mobile Phone system;
3. Keep the LED strip within 2 m to your Phone;
4. If the problems persist, contact our after-sales services.

## PRODUCT SPECIFICATIONS

|                       |                              |
|-----------------------|------------------------------|
| Power supply mode     | Car battery                  |
| Voltage               | 12 - 18V                     |
| Waterproof rating     | IP67                         |
| Control mode          | APP + remote controller (RF) |
| operating temperature | -40~85 °C                    |



## **FCC STATEMENT BT**

**NOTE:** This equipment has been tested and found to comply with the limits for a Class B digital device, pursuant to part 15 of the FCC Rules. These limits are designed to provide reasonable protection against harmful interference in a residential installation. This equipment generates uses and can radiate radio frequency energy and, if not installed and used in accordance with the instructions, may cause harmful interference to radio communications. However, there is no guarantee that interference will not occur in a particular installation. If this equipment does cause harmful interference to radio or television reception, which can be determined by turning the equipment off and on, the user is encouraged to try to correct the interference by one or more of the following measures:

- Reorient or relocate the receiving antenna.
- Increase the separation between the equipment and receiver.
- Connect the equipment into an outlet on a circuit different from that to which the receiver is connected.
- Consult the dealer or an experienced radio/TV technician for help

Changes or modifications not expressly approved by the party responsible for compliance could void the user's authority to operate the equipment.

This device complies with Part 15 of the FCC Rules. Operation is subject to the following two conditions:

- (1) this device may not cause harmful interference, and
- (2) this device must accept any interference received, including interference that may cause undesired operation.



## **CUSTOMER SERVICE**

**Phone Number: 1(805)538-4353**

**Office Hours: Mon-Fri 9 am -5pm(PST)**

**E-Mail: [support@sealight-led.com](mailto:support@sealight-led.com)**

**Website: <https://sealight-led.com/>**

**MADE IN CHINA**