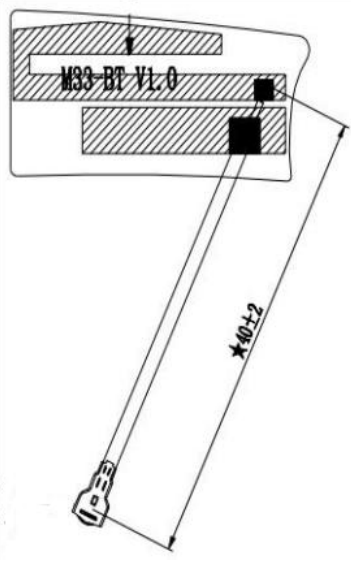
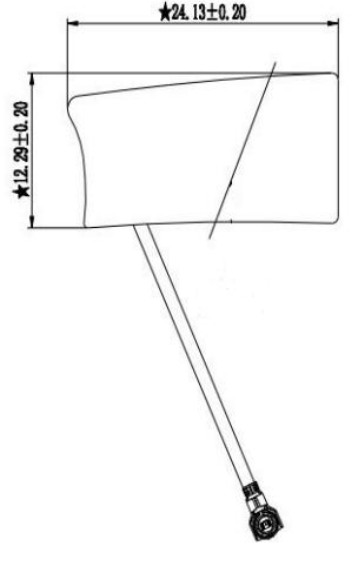


Manufacturer information: Shenzhen Lanqi Chuangfa Technology Co., Ltd.

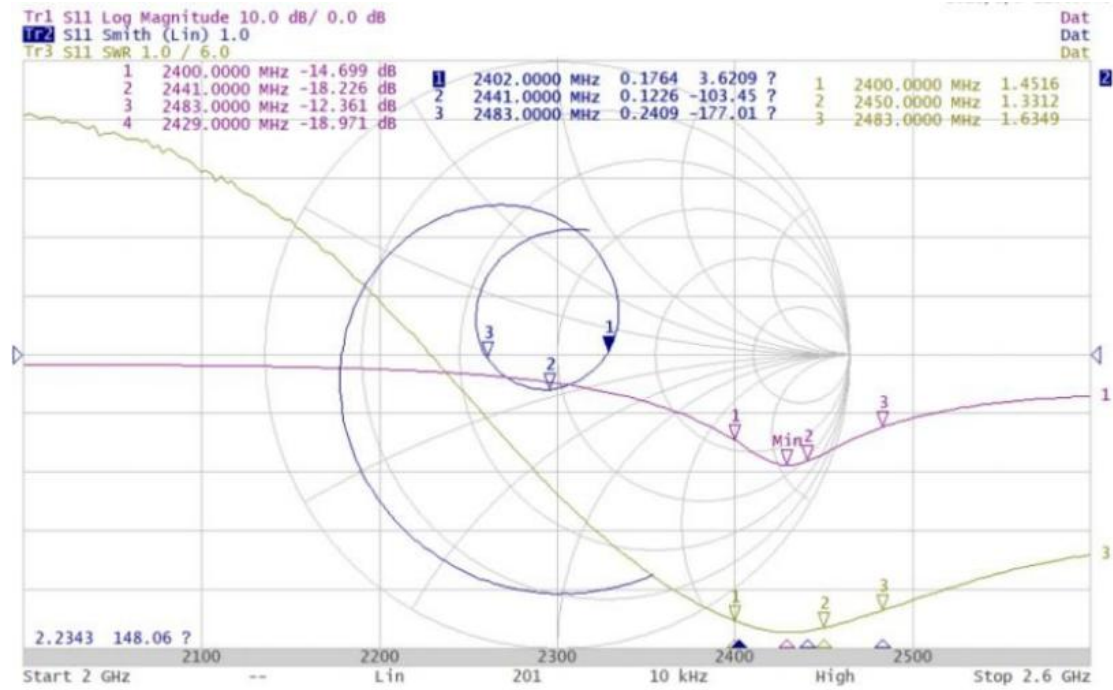
Test condition-

1. S Parameter measurement.
2. Equipment: Network analyzer(Agilent E5071C),Microwave darkroom,CMW500.
3. Item: Impedance , Return loss , VSWR , Efficiency , Gain , Radiation field pattern , Sensitivity , Power , Frequency offset , Active data TRP TIS.

Test item		Detection result
Specification	25um Copper	OK
Material	One-and-half	OK
Material	Gummed paper	OK
Electroplate	Antioxidant	OK
Appearance	Matte black	OK

Test point	Specification	Detection result
Appearance	24.13mm*12.29mm	OK
Goldfinger	2.8mm*2.6mm 1.5mm*1.5mm	OK
Drawing	 <p>The drawing shows a perspective view of the test item. It is a rectangular component with a length of 24.13 ± 0.20 mm and a width of 12.29 ± 0.20 mm. The component has a central rectangular area with a hatched pattern, labeled "M33-BT-VL-0". A dimension of 40 ± 2 mm is shown for the length of the component's body. The drawing also shows a connector at the bottom.</p>	 <p>The drawing shows a perspective view of the test item, similar to the one in the previous drawing. It is a rectangular component with a length of 24.13 ± 0.20 mm and a width of 12.29 ± 0.20 mm. The drawing also shows a connector at the bottom.</p>

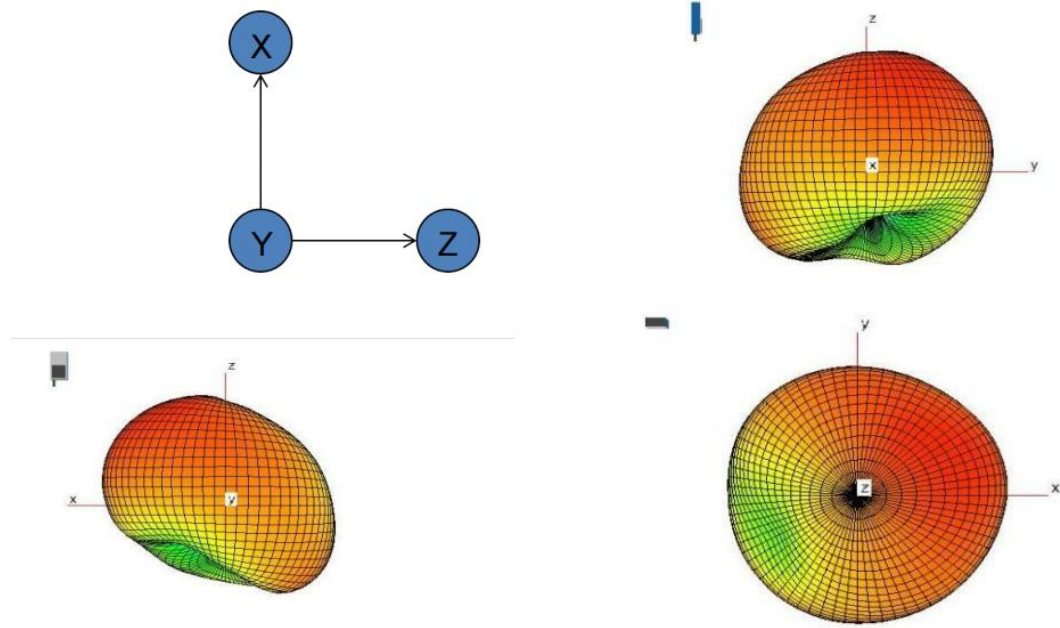
Debugging waveform-



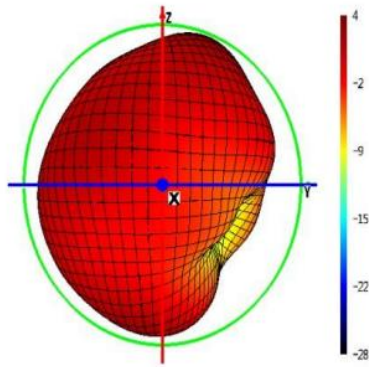
Complete free field test			
	Channe1	TRP Power(dBm)	TIS Sensitivity(dBm)
Complete machine	CH 0	7.04	-90.55
	CH 39	7.16	-91.33
	CH78	7.37	-91.22

Complete head test			
	Channe1	TRP Power(dBm)	TIS Sensitivity(dBm)
Complete machine	CH 0	2.18	-85.35
	CH 39	2.84	-85.92
	CH78	3.02	-85.78

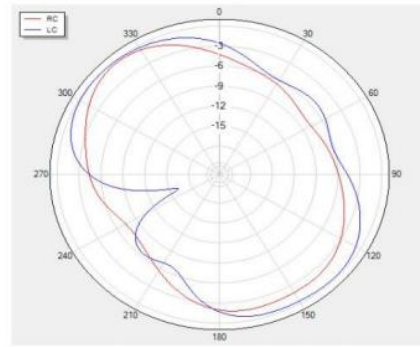
Micro dark room free to walk around-



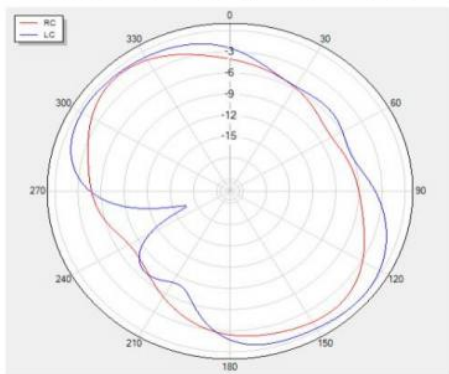
Measurement of antenna efficiency field pattern in microwave darkroom-



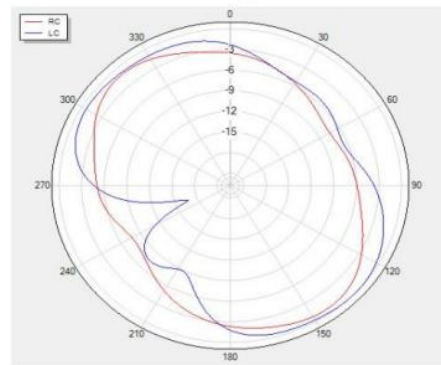
Theta=90 freq=2400MHz



Theta=90 freq=2450MHz



Theta=90 freq=2480MHz



Gain&Efficiency			
Frequency(MHz)	Gain(dBi)	Efficiency(dB)	Efficiency(%)
2400	3.49	-1.51	69.00
2410	3.03	-1.73	64.50
2420	3.70	-1.39	71.42
2430	3.64	-1.53	68.52
2440	3.00	-1.63	66.56
2450	3.51	-1.45	70.09
2460	3.56	-1.54	68.21
2470	3.33	-1.46	69.93
2480	3.78	-1.26	64.09
2490	3.21	-1.69	65.36
2500	3.52	-1.74	62.44