



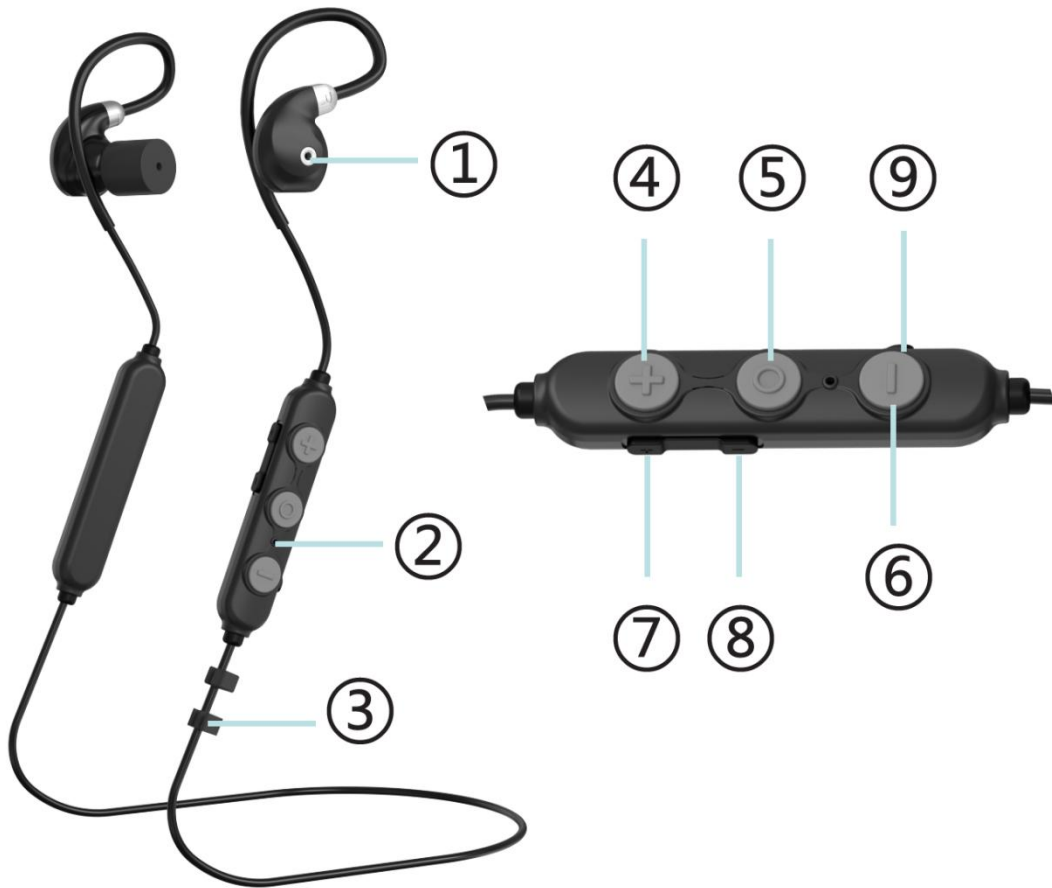
EARMOR[®]

M200T

IN-EAR BLUETOOTH HEARING PROTECTION

Congratulations and thanks for your choosing EARMOR®
EARMOR® Hearing Protectors designed to protect users from harmful noise.

Overview



- ① Microphone
- ② Indicator light
- ③ Adjustable bush
- ④ Music volume up
- ⑤ Multi-function button (MFB)
- ⑥ Music volume down
- ⑦ Aware volume up
- ⑧ Aware volume down
- ⑨ Type-C charging port

Material: Plastics + rubber

Description

EARMOR® M200T is an in-ear noise-canceling headset designed for protecting hearing in noisy environments. It helps you clearly hear the ambient sounds around you and maintain good communication. The headset adopts an in-ear hook and neck hanging design, making it more stable to wear and not easily take off. With a stretchable cable, it effectively avoids tangling. Featured Bluetooth, it allows you freely listen to music and answer/reject calls even in a noise-canceling mode. The multi-function button design allows you to easily adjust the volume of music, switch between tracks, answer, hang up, or reject calls.

Safety information

Please read, understand, and follow all safety information in these instructions prior to using the communication headset. Retain these instructions for future reference.

OPERATION INSTRUCTIONS

Power ON/OFF

POWER ON: Press and hold MFB(⑤) for 2 seconds

POWER OFF: Press and hold MFB(⑤) for 5 seconds

Ambient listening mode

Double-click the MFB(⑤) to switch the ambient listening modes. When cycling to the next mode, the device will play voice prompt saying the mode name.

Ambient listening operation:

Aware volume up: Click the Aware volume up(⑦)

Aware volume down: Click the Aware volume down(⑧)

Bluetooth Mode

- Click the MFB(⑤) to enter the Bluetooth pairing mode when powered on, the indicator light(②) flashes red and blue alternately
- The unit Bluetooth pairing name is M200T
- You will hear the prompt after Bluetooth connected successfully
- The unit will connect back the last device automatically
- If no connection with a paired device. The unit will switch off after 2 hours

Reset

When the earbuds are not functioning properly, please follow step:

- Press and hold Music volume up(④) and Music volume down(⑥) for 5 seconds when the earbuds is turned on, the indicator light(②) flashes red and blue alternately

Music operation

Play/pause: Click the MFB(⑤)

Previous track: Double-click the Music volume up(④)

Next track: Double-click the Music volume down(⑥)

Music volume up: Click the Music volume up(④)

Music volume down: Click the Music volume down(⑥)

Phone calls operation

Answer call: Click the MFB(5)

End call: Click the MFB(5)

Reject call: Press and hold MFB(5) for 2 seconds

Voice assistant

Press and hold MFB(5) for 1 second

FCC WARNING

This device complies with part 15 of the FCC Rules. Operation is subject to the following two conditions: (1) This device may not cause harmful interference, and (2) this device must accept any interference received, including interference that may cause undesired operation.

Note: This equipment has been tested and found to comply with the limits for a Class B digital device, pursuant to part 15 of the FCC Rules. These limits are designed to provide reasonable protection against harmful interference in a residential installation. This equipment generates, uses and can radiate radio frequency energy and, if not installed and used in accordance with the instructions, may cause harmful interference to radio communications. However, there is no guarantee that interference will not occur in a particular installation. If this equipment does cause harmful interference to radio or television reception, which can be determined by turning the equipment off and on, the user is encouraged to try to correct the interference by one or more of the following measures:

- Reorient or relocate the receiving antenna.
- Increase the separation between the equipment and receiver.
- Connect the equipment into an outlet on a circuit different from that to which the receiver is connected.
- Consult the dealer or an experienced radio/TV technician for help.

Note: The Grantee is not responsible for any changes or modifications not expressly approved by the party responsible for compliance. such modifications could void the user's authority to operate the equipment.

The device has been evaluated to meet general RF exposure requirement.

The device can be used in portable exposure condition without restriction.

AUDIO INPUT LEVEL

The audio level in the hearing protector is dependent on the audio input level. To prevent harmful noise levels, the hearing protector audio levels is limited to 82dB when connected to a Personal Music Player (PMP). If the hearing protector is connected to a PMP or other device with very high output level ,it is the user's responsibility to set the audio input level to a safe level.

WARRANTY

EARMOR® M300A is warranted to be free of defects in material and workmanship for a period of 1 year from the date of original purchase.

The warranty is nullified in all of the following situations:

1. The product(s) is/are broken down, reconstructed and/or modified by unauthorized parties.
2. The product(s) is/are damaged through improper use.

Production date: see the packaging



CE²⁷⁹⁷ EN352 FC RoHS Bluetooth®



OPSMEN® Tech Co., Ltd.

Tel: +86 20 81179170

Fax: +86 20 81179171

E-mail: info@earmor.com / cs@earmor.com / cs@opsmen.com

Add: Room 601, Building A, No.94 Liwan Road, Liwan District, Guangzhou, Guangdong Province, China