

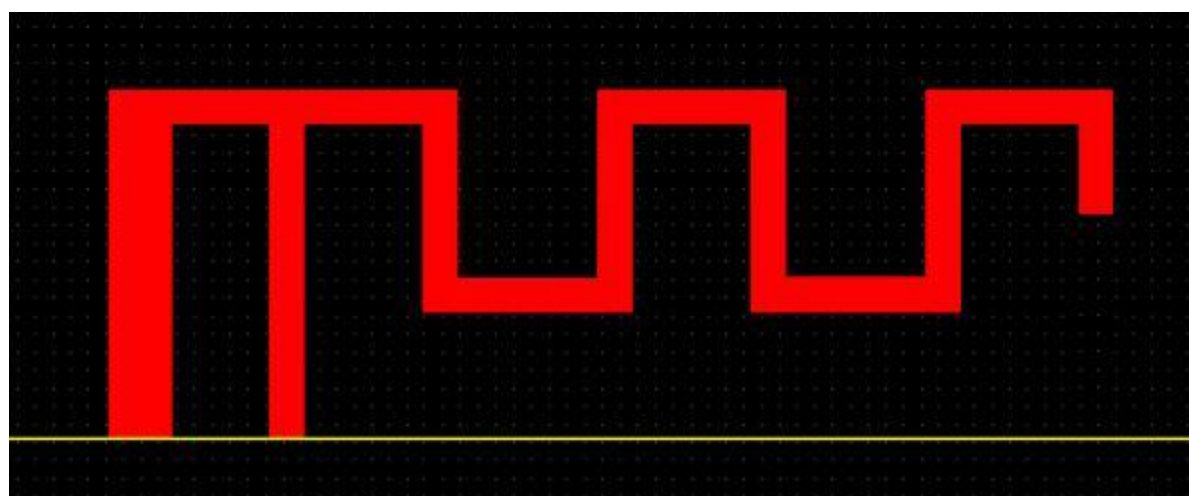
Product specification

Quick Reference Date

Product Name	Antenna module on the system board	
Frequenc Range	2400 ~ 2500MHz	
Ant. Port Input Pwr. (dBm)	0 (Typ. BT class 2 output power)	
Tot. Rad. Pwr. (dBm)	-1.2 (Input pwr - loss pwr)	
Peak EIRP(dBm)	1.2	
Directivity (dBi)	1 (all direction antenna)	
Efficiency (dB)	6 0.2 %	
Gain (dBi)	1.68 (Peak Gain XY-plane)	
Maximum Power (dBm)	1.7 (XY-plane)	
Minimum Power (dBm)	-4(XY-plane)	
Avg. Power (dBm)	-0.5(XY-plane)	
Input Impendence(ohm)	50	
Polarization Type	V ertical & Horizontal	
V . S .W .R	< 1.4	
Manufacture	ZHUHAI JIELI TECHNOLOGY CO.,LTD	
Adress	Building 9, Jinshi Garden, No. 107 Shihua West Road, Xiangzhou District, Zhuhai City, Guangdong Province, China	

All the technical data and information contained herein are subject to change without prior notice

Antenna Layout & module on the system board

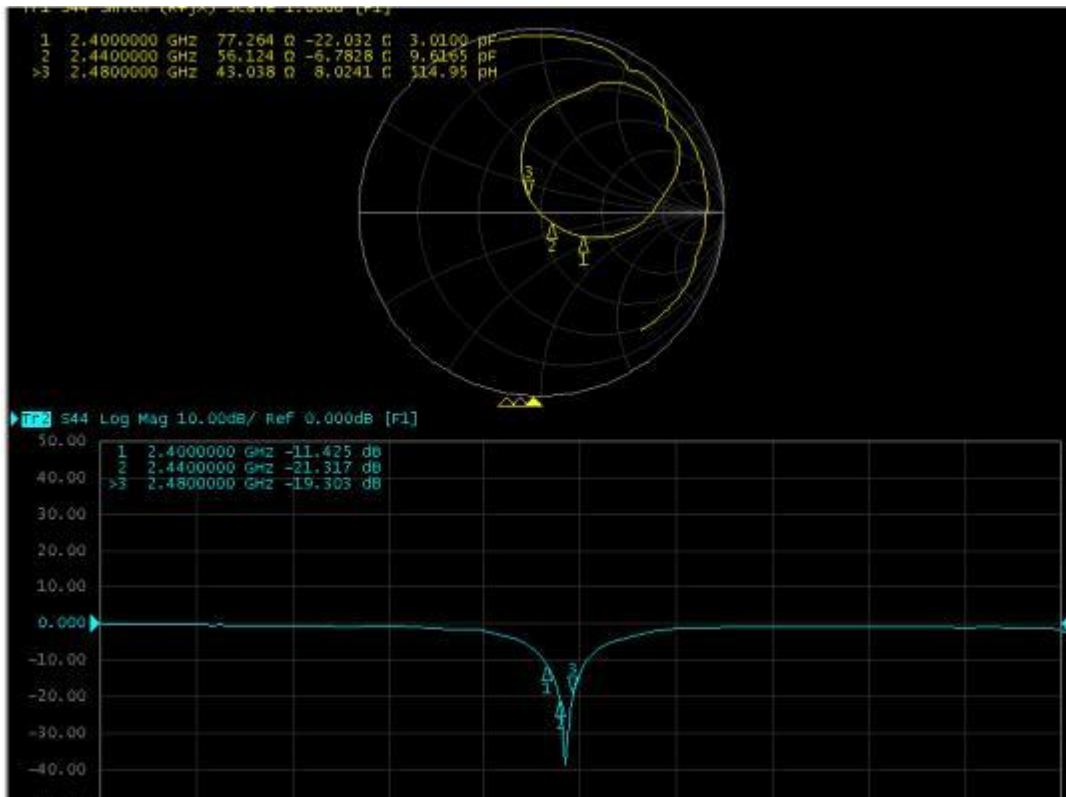


Antenna Gain

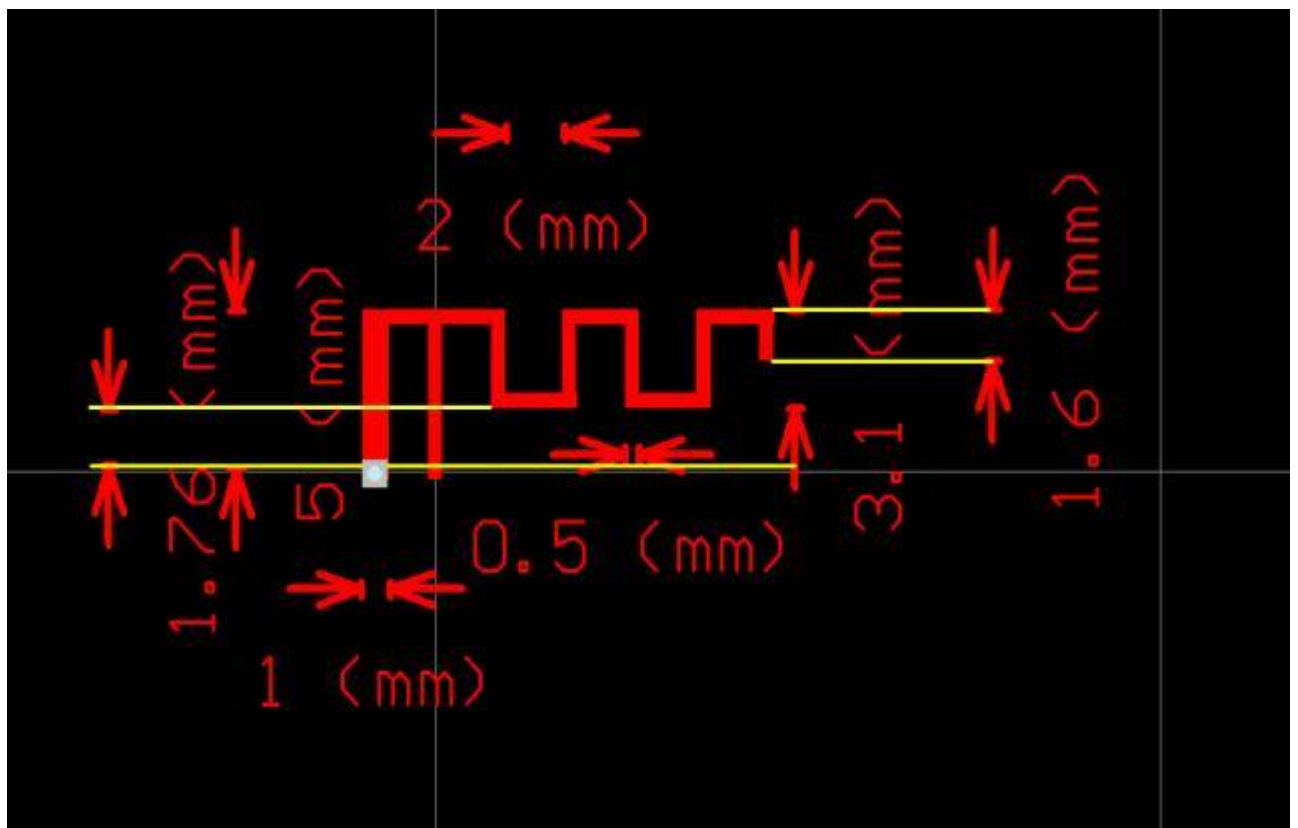
Gain Table

Unit in dBi @2.44GHz	XY-plane		XZ-plane		YZ-plane		Efficiency
	Peak	Avg.	Peak	Avg.	Peak	Avg.	
Module Board	1.35	-0.5	1.68	-3.6	1.11	-3.0	6 0.2 %

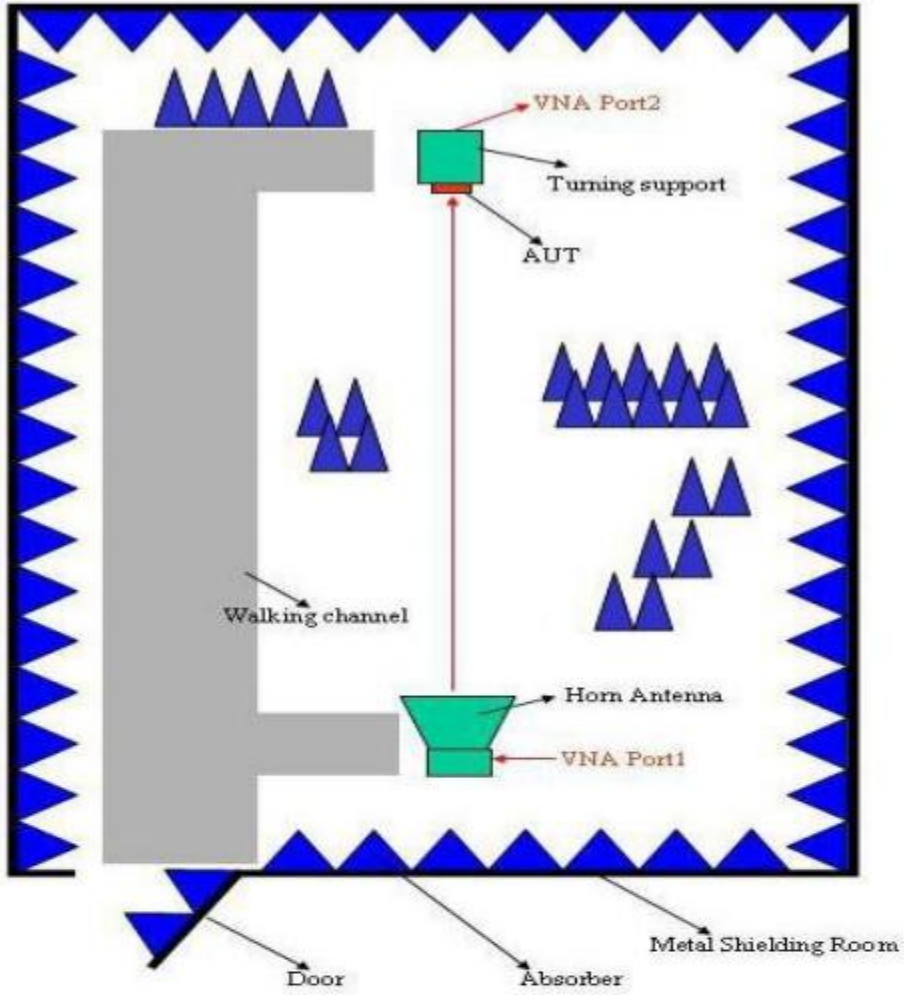
Return Loss



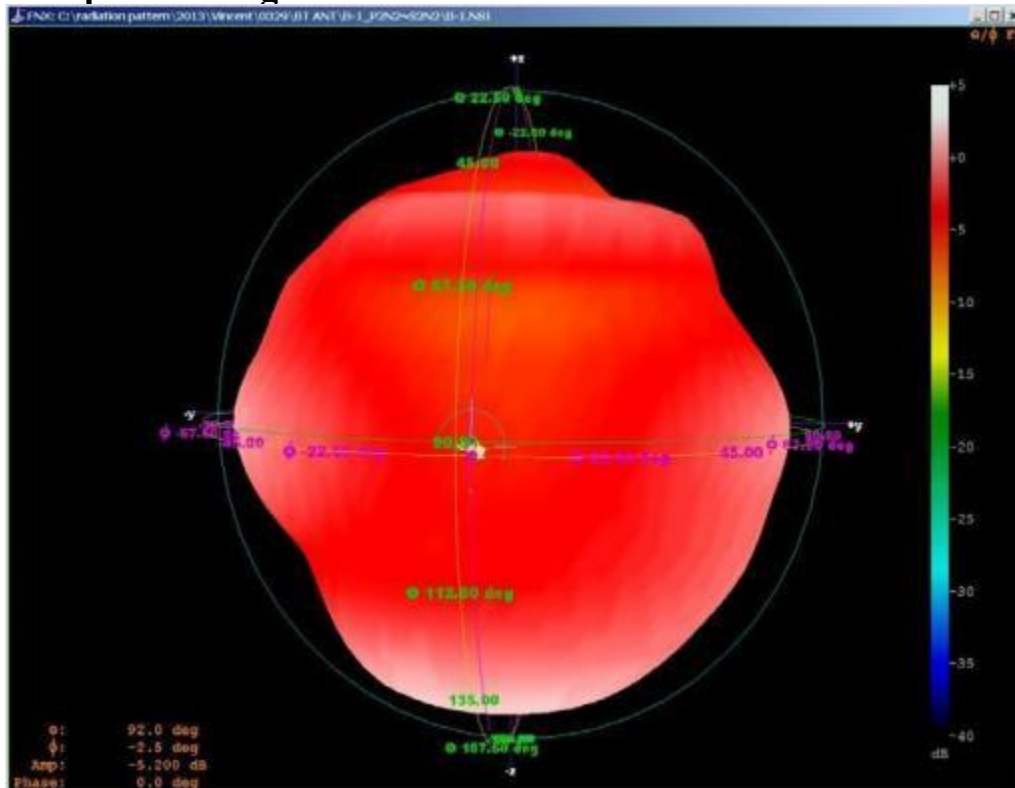
PIFA



The Environment of Antenna Radiation Pattern

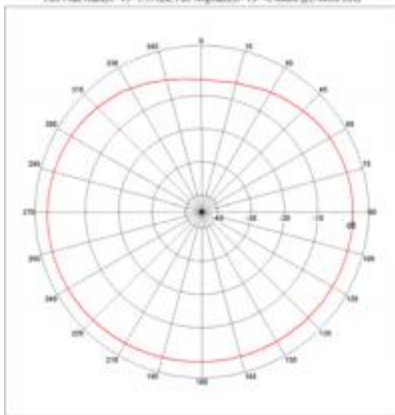


3D radiation pattern diagram



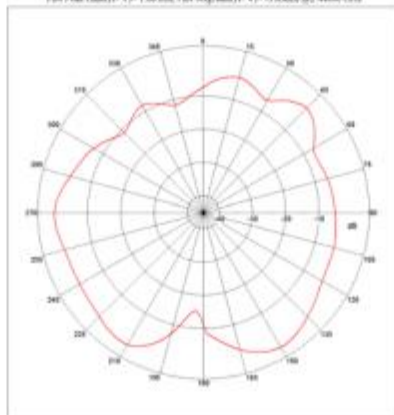
XY-plane

Far-field Power Distribution(H+V) on X-Y Plane
 Plot Peak Gain(H+V): 1.15 dB, Plot AvgGain(H+V): -0.46dB (2.4400 GHz)



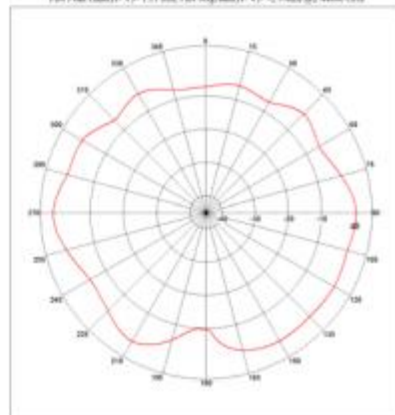
XZ-plane

Far-field Power Distribution(H+V) on X-Z Plane
 Plot Peak Gain(H+V): 1.26 dB, Plot AvgGain(H+V): -0.20dB (2.4400 GHz)



YZ-plane

Far-field Power Distribution(H+V) on Y-Z Plane
 Plot Peak Gain(H+V): 1.11 dB, Plot AvgGain(H+V): -0.76dB (2.4400 GHz)



EUT Photo

