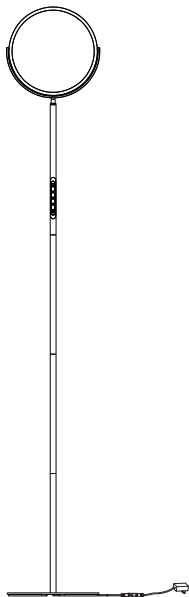


edishinē

LED Floor Lamp

SPU: HFLAA1A

[User Manual]



Please pay attention to the warning signs
Read the instructions with caution before operating
and keep it properly

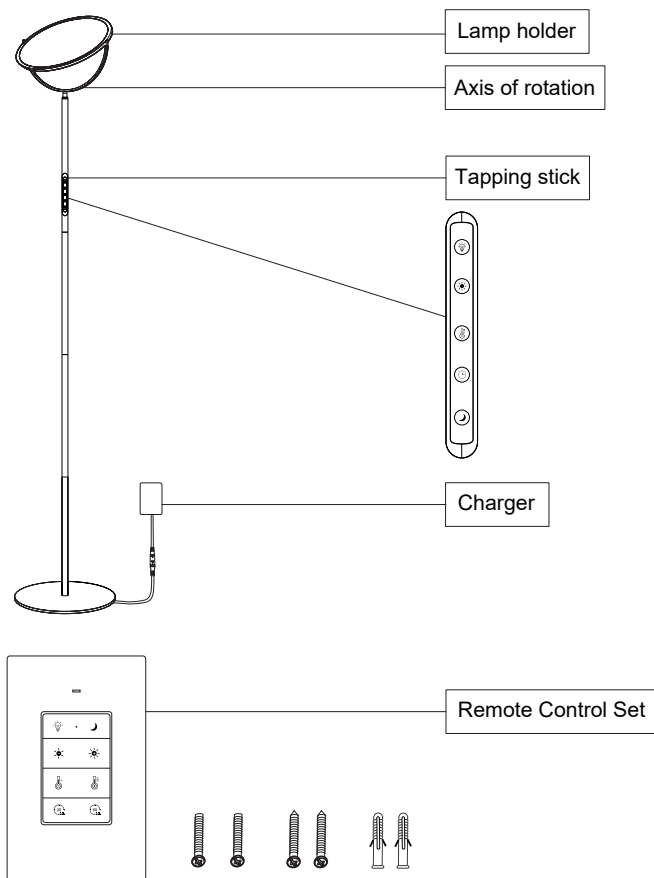
Package Contents

- 1x LED Floor Lamp
- 1x Remote Control Set
- 1x Power Adapter
- 1x User Manual
- 1x Quick Start Guide

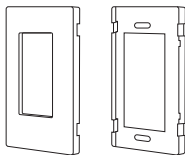
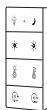
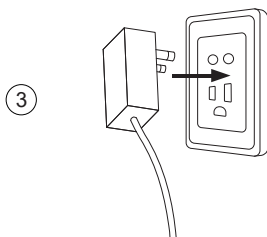
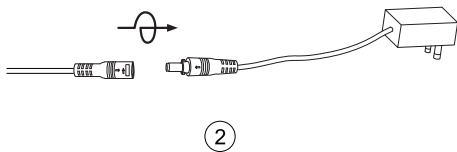
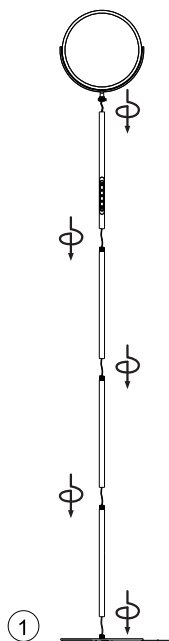
Specifications

Input	AC 100–240V 50/ 60Hz
Output	DC 30V/ 1.2A
Power Consumption	28W
Luminous Flux	2500lm
SDCM	≤6
Color Rendering Index	>80Ra
Brightness Mode	5%/ 25%/ 50%/ 75%/ 100%
Color Temperature	2700K/ 4000K/ 5000K/ 6500K
LED Type	SMD2835
Material	Steel, PC, Pmma
Weight	4.28kg / 9.44 lb
Dimension	D305 x H1925mm / 12.0" x 75.78"

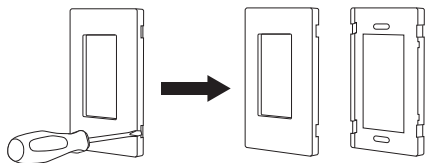
Product Diagram



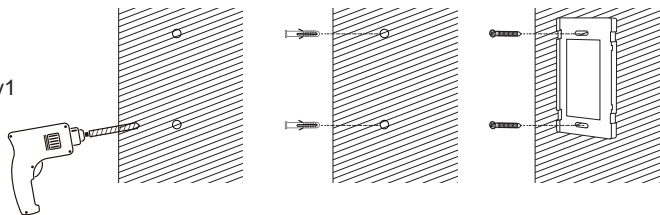
Product Assembly



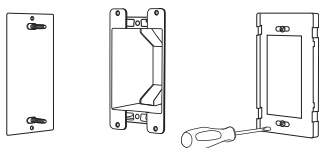
④



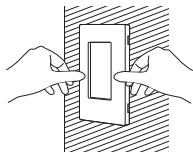
Way1



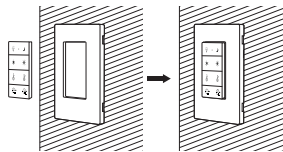
Way2



⑤



⑥

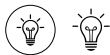
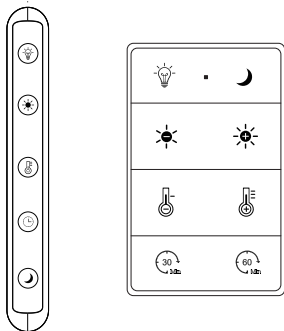


⑦



⑧

Control instructions



Turn ON/OFF

Tap the tapping stick to turn on the LED lamp after plugging in the power.
Tap the again with your hand to turn off the LED lamp.



Turn ON / OFF night light

Tap the tapping stick to turn on the Warm colors with low brightness night light, tap the again with your hand to turn off.



Adjusting the Brightness

When the LED is on, click this position to adjust the brightness to 5%/ 25%/ 50%/ 75%/ 100%.



Color Temperature Mode

Pressing the "Color Temperature Button" will switch between 2700K/4000K/5000K/6500K.





Timed Lights Off

When the LED lamp is on, Tap the button, when the "Clock Indicator" lights up the right half circle and a full circle, indicating the countdown 30 minutes / 60 minutes to turn off the light.

Note:

When the remote control does not work

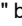

By default the lamp fixture and remote are complete paired. If not, please unplug the fixture from the charger, and within 30s of re-powering up after complete power off, the remote control long press the "  " button for 5s until the "  " indicator light on the touch control panel of the fixture blinks twice to completely the pairing.

Multiple product pairings

If you buy more than one fixture, you can use the matching one remote control to control more than one fixture at the same time, or the same fixture can be paired using several different remotes. Follow point 1 to disconnect the charger first, then power it up within 30s and use the remote to complete the pairing.

The maximum number of fixture and remote pairs is 10. When this number is exceeded, new pairs will overwrite the earliest pairing relationship in order.

How to disconnect the fixture from the remote control

If you want to release the connection between the remote control and the lamps, refer to point 1, unplug the charger first, after completely disconnecting the power, re-power on, long press the "  " button on the remote control for 5s within 30s, when "  " on the body of the lamp flashes twice, it means that the remote control and the lamps have been released from the control connection.

Product Care

1. Do not repair disassemble or modify under any circumstances;
2. Do not place near any heat source or heat source or in direct sunlight;
3. Do not place on uneven, unsecured desk or table;
4. Use ONLY the supplied AC power adapter;
5. Do not use the appliance with frayed or damaged electrical cords;
6. Do not touch an electrical appliance with wet hands or when liquids are present;
7. Please keep the lamp and all appliances dry and clean;
8. Unplug the adapter when the lamp is not used;
9. Power off before cleaning;
10. Clean the lamp only with a soft dry cloth;
11. Never overload electrical circuits as it may cause electrical shock or fire;
12. If the remote connection fails, please watch the user manual carefully or contact after-sales customer service, we will reply within 24 hours.

Safety Information

WARNING: This device complies with Part 15 of the FCC Rules. Operation is subject to the following two conditions: (1) This device may not cause harmful interference, and (2) This device must accept any interference received, including interference that may cause undesired operation.

CAUTION: Changes or modifications not expressly approved by the party responsible for compliance could void the user's authority to operate the equipment.

NOTE: This equipment has been tested and found to comply with the limits for a Class B digital device, pursuant to Part 15 of the FCC Rules. These limits are designed to provide reasonable protection against harmful interference in a residential installation. This equipment generates, uses, and can radiate radio frequency energy and, if not installed and used in accordance with the instructions, may cause harmful interference to radio communications. However, there is no guarantee that interference will not occur in a particular installation. If this equipment does cause harmful interference to radio or television reception, which can be determined by

turning the equipment off and on, the user is encouraged to try to correct the interference by one more of the following measures:

- Reorient or relocate the receiving antenna.
- Increase the distance between the equipment and receiver.
- Connect the equipment into an outlet on a circuit different from that to which the receiver is connected.
- Consult the dealer or an experienced radio/TV technician for help.

FCC Radiation Exposure Statement:

This equipment complies with FCC radiation exposure limits set forth for an uncontrolled environment.

ISED Warning:

This device complies with Innovation, Science, and Economic Development Canada licence-exempt RSS standard(s). Operation is subject to the following two conditions:

- (1) this device may not cause interference, and
- (2) this device must accept any interference, including interference that may cause undesired operation of the device.

Le présent appareil est conforme aux CNR d'Innovation, Sciences et Développement économique Canada applicables aux appareils radio exempts de licence. L'exploitation est autorisée aux deux conditions suivantes :

- (1) l'appareil ne doit pas produire de brouillage, et
- (2) l'utilisateur de l'appareil doit accepter tout brouillage radioélectrique subi, même si le brouillage est susceptible d'en compromettre le fonctionnement.

The device is compliance with RF exposure guidelines, users can obtain Canadian information on RF exposure and compliance.

Le présent appareil est conforme

Après examen de ce matériel aux conformité ou aux limites d'intensité de champ RF, les utilisateurs peuvent sur l'exposition aux radiofréquences et la conformité and compliance d'acquérir les informations correspondantes.

One Year Limited Warranty

Supported by our professional R&D team and QC team, we provide One Year Warranty for materials and workmanship from the purchase date.

Please note that the warranty does not cover damage caused by personal misuse or improper installation.

Please attach your Order ID and Name so that our dedicated customer service team can help you better.

