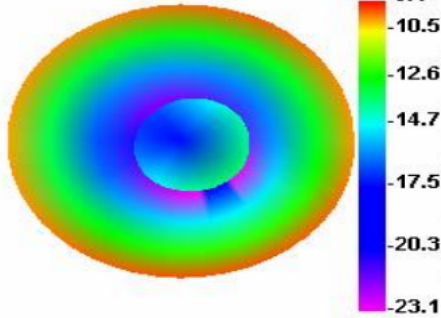
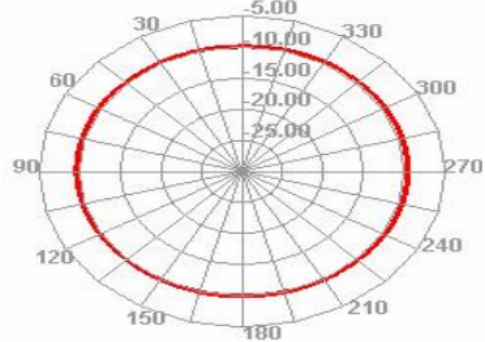


Antenna lobe diagram:

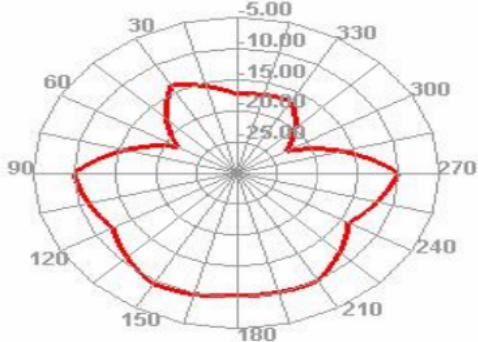
800.000MHz



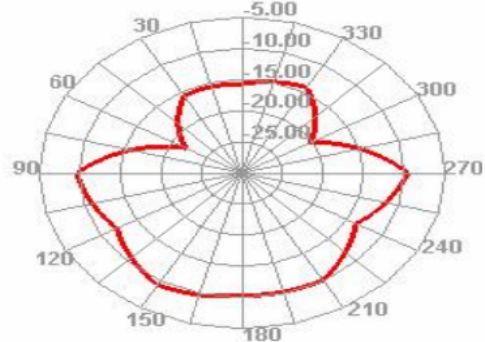
800.000MHz H



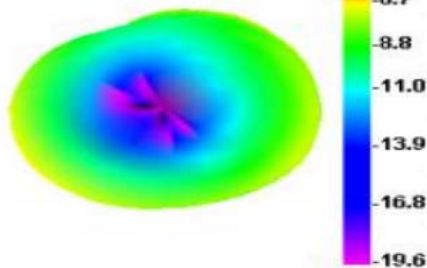
800.000MHz E1



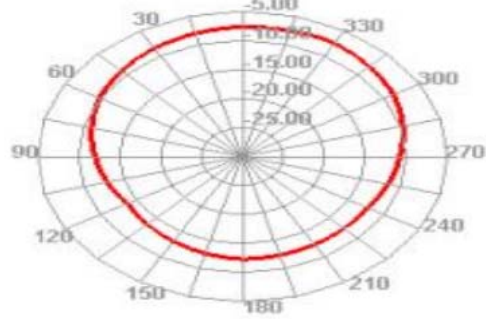
800.000MHz E2



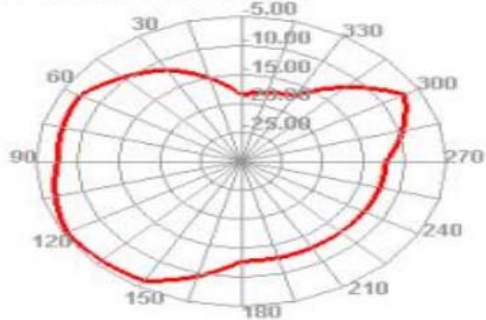
1700.000MHz



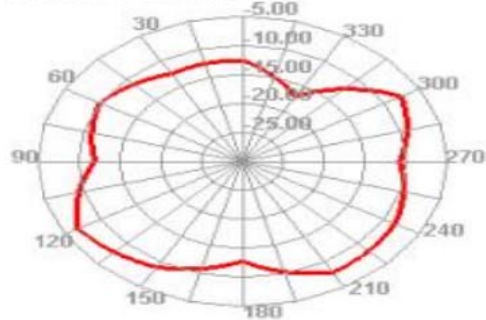
1700.000MHz H



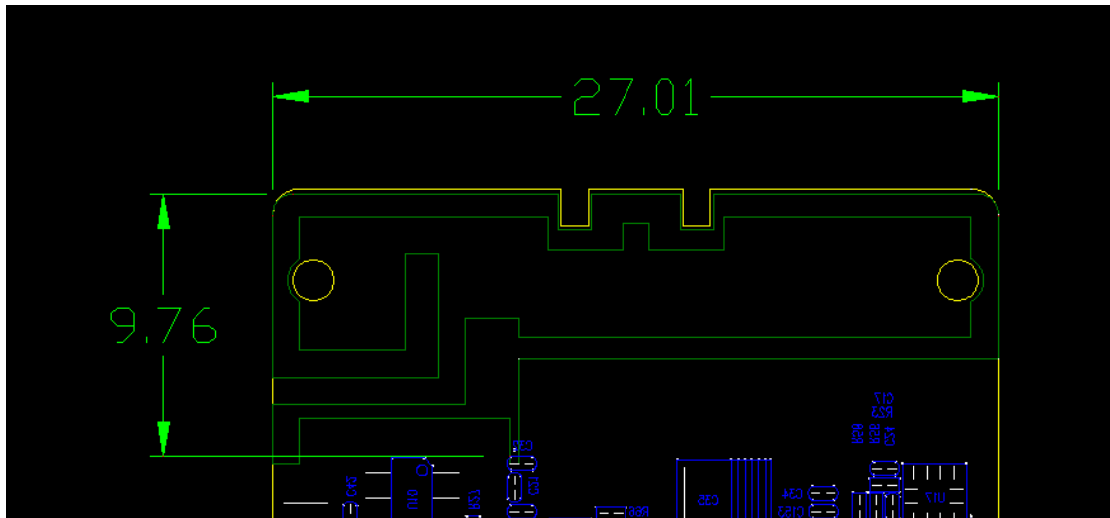
1700.000MHz E1



1700.000MHz E2



Antennadimension:



Antennasupplier: Suzhou G-star electronic tech Co.Ltd

Antennamodel: LW2G-4/5

Antenna Gain:

Frequency ID	1	2	3	4	5	6	7	8
Frequency (MHz)	820.0	840.0	860.0	880.0	900.0	920.0	940.0	960.0
Efficiency (dBi)	-3.70	-2.05	-2.02	-3.12	-3.44	-3.59	-3.72	-3.80
Gain (dBi)	0.32	0.39	0.78	0.86	0.70	0.59	0.42	0.68
Efficiency (%)	42.67%	44.15%	46.93%	48.77%	45.26%	43.73%	42.51%	41.64%

Frequency ID	1	2	3	4	5	6	7	8
Frequency (MHz)	1710.0	1750.0	1790.0	1830.0	1870.0	1910.0	1950.0	1990.0
Efficiency (dBi)	-3.35	-3.22	-3.12	-2.88	-2.83	-2.16	-3.14	-3.34
Gain (dBi)	0.67	0.72	0.95	1.11	1.31	1.07	1.02	1.14
Efficiency (%)	46.19%	47.62%	48.73%	51.55%	52.11%	49.25%	48.58%	46.39%

Test Eivroment:



