



SPECIFICATION FOR APPROVAL

File No. 2021111901
 Revision 1.0

北科视频

CUSTOMER: _____

2300-W1011D-01

CUSTOMER NO: _____

2.4GHz-5.8GHz Antenna L=100MM

PART NAME: _____

SL186P.300046.P01

SUPPLIER NO: _____

Date:

Q'TY:

PCS

| CUSTOMER APPROVED BY | | |
|----------------------|-------|------------|
| APPROVAL | CHIEF | SUPERVISOR |
| | | |

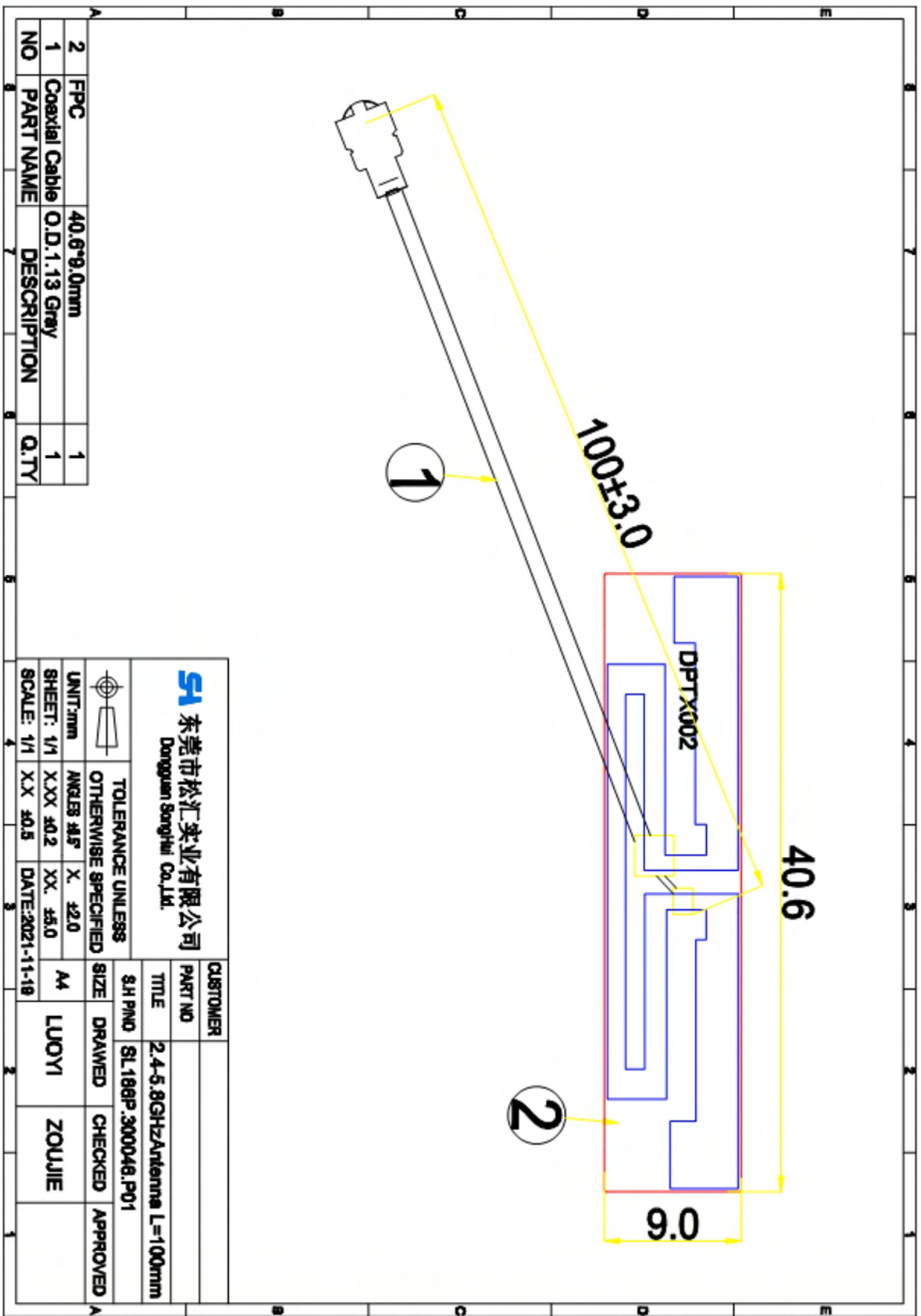
| SUPPLIER SIGNATURE | | |
|--------------------|---------------|--------------|
| APPROVAL | CHECK | DESIGN |
| sunny | ZouJie | LuoYi |



Acknowledgment item list

| NO. | (Contents) | (Number of Page) | (Page Code) |
|-----|--------------|---------------------|----------------|
| 1 | Spec Cover | 1 | 1 |
| 2 | Spec Item | 1 | 2 |
| 3 | Drawing | 1 | 3 |
| 4 | Test Reports | 1 | 4 |
| 5 | S Parameter | 1 | 5 |
| 6 | Gain Test | 1 | 6 |
| 7 | Gain Test | 1 | 7 |
| 8 | | | |
| 9 | | | |
| 10 | - | - | - |
| 11 | - | - | - |
| 12 | - | - | - |

add: No. 26, Foxin Juxiang 2nd Road, Dalang Town, Dongguan
City: 0769-82226176 fax: 0769-82226175



| NO | PART NAME | DESCRIPTION | Q.TY |
|----|---------------|---------------|------|
| 2 | FPC | 40.6*9.0mm | 1 |
| 1 | Coaxial Cable | O.D.1.13 Gray | 1 |

| | | | | | |
|--------------------------------------|---------------------|--|-----------------|----------|----------|
| | | 东莞市松汇实业有限公司 Dongguan Songhui Co., Ltd. | | CUSTOMER | |
| TOLERANCE UNLESS OTHERWISE SPECIFIED | | ANGLE: 45° | | PART NO | |
| UNIT:mm | OTHERWISE SPECIFIED | X. ±2.0 | XX ±5.0 | TITLE | |
| SHEET: 1/1 | SCALE: 1/1 | XX ±0.5 | DATE:2021-11-19 | 3.H PWD | |
| SIZE | | SIZE | DRAWN | CHECKED | APPROVED |
| A4 | | LUOYI | ZOUJIE | | |
| 2.4-5.8GHzAntenna L=100mm | | SL189P-300046.P01 | | | |

add: No. 26, Foxin Juxiang 2nd Road, Dalang Town, Dongguan
City: 0769-82226176 fax: 0769-82226175



Test Reports

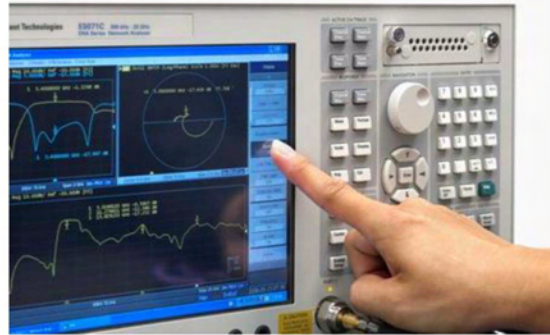
| Electrical Properties | |
|------------------------------|------------------------------|
| Frequency | 2.4-5.8GHz |
| Impedance | 50 Ohm Nominal |
| V.S.W.R | 1.92 : 1 Max |
| Return Loss | -10 dB Max |
| Radiation | Omni-directional |
| Gain (Peak) | 2.4GHz (3.5dBi) 5GHz(4.7dBi) |
| Cable Loss | 3.2dB / m Max @ 2450 MHz |
| Polarization | Linear, Vertical |
| Admitted Power | 1 W |
| Connector | MHF1 |
| Physical Properties | |
| Antenna Material | FPC |
| Cable Type | O.D. 1.13mm // L= 100mm |
| Operating Temp. | -10 ~ +60 °C |
| Storage Temp. | -10 ~ +70 °C |
| Cable Color | GRAY |

add: No. 26, Foxin Juxiang 2nd Road, Dalang Town, Dongguan
City: 0769-82226176 fax: 0769-82226175



S Parameter Test

Agilent E5071C



1 Active Ch/Trace 2 Response 3 Stimulus 4 Mkr/Analysis 5 Instr State

▶ Tr1 S33 SWR 1.000/ Ref 1.000 [F1]

| | | | |
|----|-------------|-----|--------|
| 1 | 2.400000000 | GHz | 1.1661 |
| 2 | 2.450000000 | GHz | 1.1857 |
| 3 | 2.500000000 | GHz | 1.5171 |
| 4 | 5.150000000 | GHz | 1.2712 |
| 5 | 5.500000000 | GHz | 1.2235 |
| >6 | 5.850000000 | GHz | 1.0465 |

11.000
10.000
9.000
8.000
7.000
6.000
5.000
4.000
3.000
2.000
1.000

Format

SWR

Log Mag

Phase

Group Delay

Smith ▶

Polar ▶

Lin Mag

• SWR

Real

Imaginary

1 Start 2 GHz

IFBW 70 kHz

Stop 6.2 GHz

Cor !

Meas

Stop

ExtRef

Ready

Svc

2019-11-24 09:46

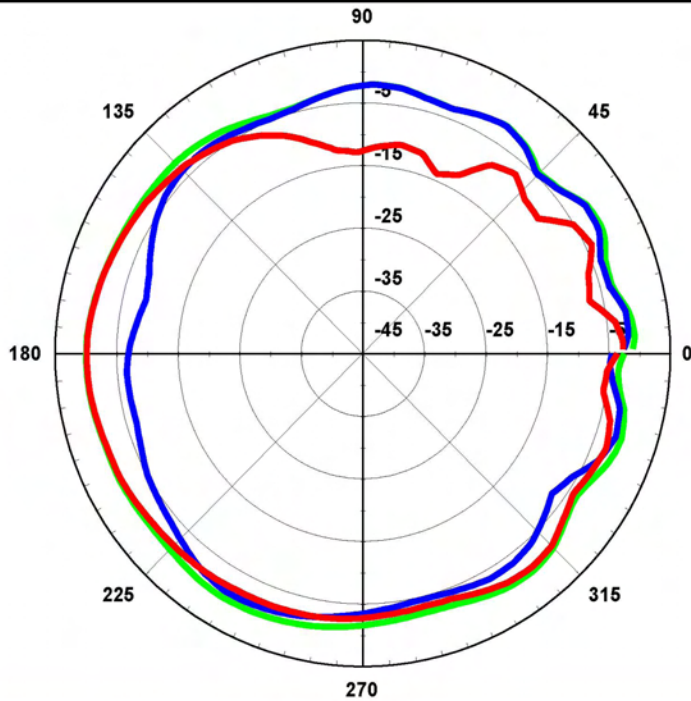
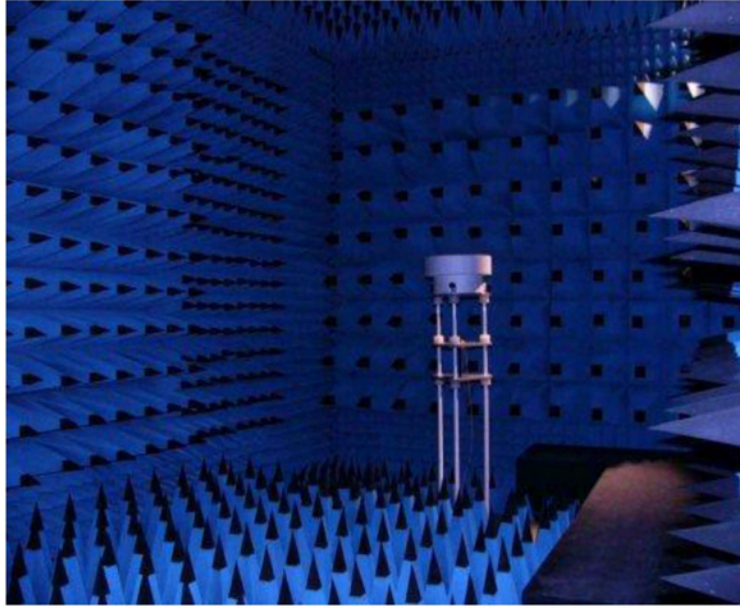
add: No. 26, Foxin Juxiang 2nd Road, Dalang Town, Dongguan
City: 0769-82226176 fax: 0769-82226175



增益测试

Gain Test

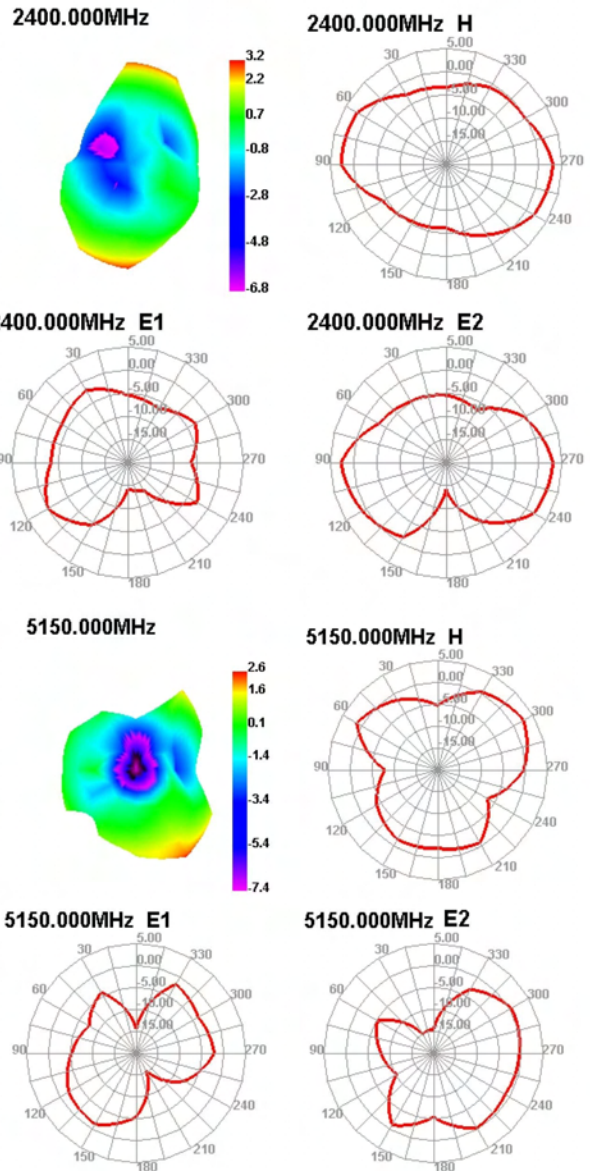
*Antenna
Radiation
Pattern
VS
Gain*



add: No. 26, Foxin Juxiang 2nd Road, Dalang Town, Dongguan
City: 0769-82226176 fax: 0769-82226175

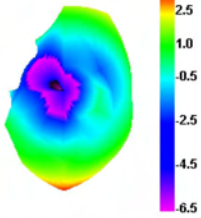
| Freq (MHz) | Effi (%) | Gain (dBi) |
|------------|----------|------------|
| 2400 | 71.08 | 3.20 |
| 2410 | 71.26 | 3.28 |
| 2420 | 69.01 | 3.23 |
| 2430 | 70.83 | 3.49 |
| 2440 | 67.33 | 3.41 |
| 2450 | 68.61 | 3.50 |
| 2460 | 63.87 | 3.14 |
| 2470 | 61.53 | 2.74 |
| 2480 | 62.87 | 2.54 |
| 2490 | 68.06 | 2.77 |
| 2500 | 65.54 | 2.70 |

| Freq (MHz) | Effi (%) | Gain (dBi) |
|------------|----------|------------|
| 5150 | 55.88 | 2.60 |
| 5200 | 51.65 | 2.47 |
| 5250 | 51.61 | 2.39 |
| 5300 | 53.79 | 2.60 |
| 5350 | 66.51 | 2.99 |
| 5400 | 72.23 | 3.75 |
| 5450 | 70.19 | 2.59 |
| 5500 | 58.55 | 1.80 |
| 5550 | 58.05 | 1.95 |
| 5600 | 61.17 | 2.99 |
| 5650 | 66.96 | 3.41 |
| 5700 | 73.22 | 3.79 |
| 5750 | 77.19 | 4.55 |
| 5800 | 73.27 | 4.56 |
| 5850 | 65.81 | 4.70 |

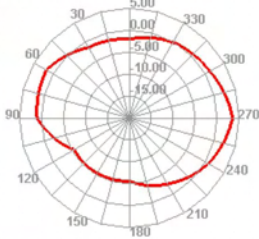




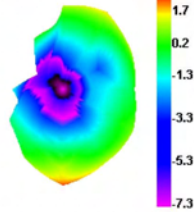
2450.000MHz



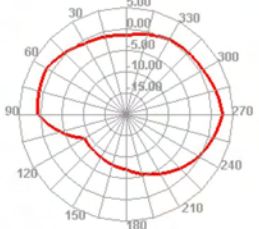
2450.000MHz H



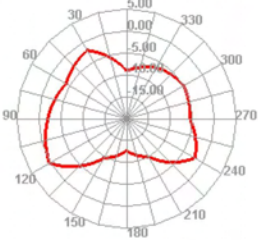
2500.000MHz



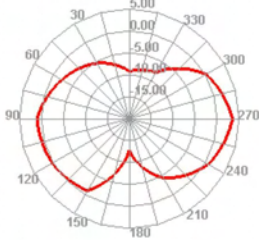
2500.000MHz H



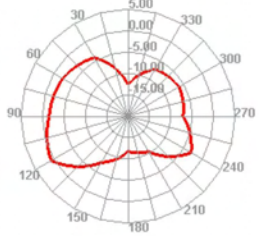
2450.000MHz E1



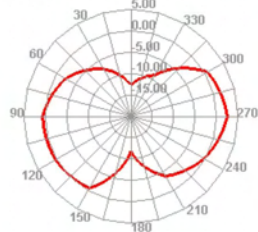
2450.000MHz E2



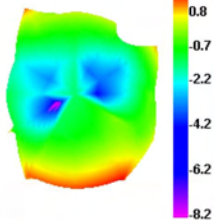
2500.000MHz E1



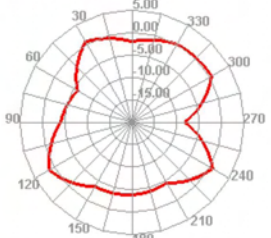
2500.000MHz E2



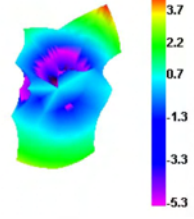
5500.000MHz



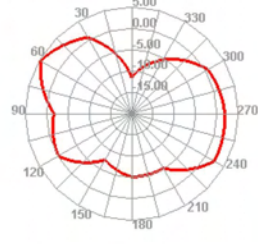
5500.000MHz H



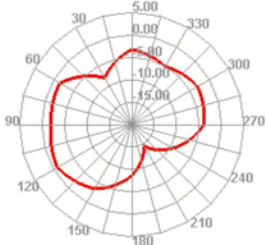
5850.000MHz



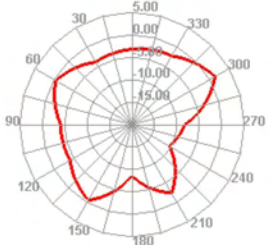
5850.000MHz H



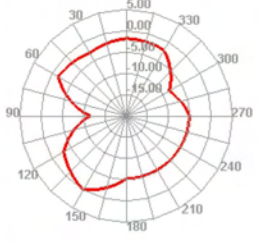
5500.000MHz E1



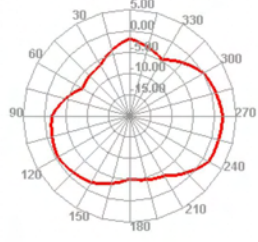
5500.000MHz E2



5850.000MHz E1



5850.000MHz E2



Actual Antenna Photo

