

01_WLAN2.4GHz_802.11b 1Mbps_Bottom Face_0mm_Ch11

Communication System: WLAN 2.4GHz; Frequency: 2462.000

Medium: HSL. Medium parameters used: $f = 2462.000$ MHz; $\sigma = 1.87$ S/m; $\epsilon_r = 39.1$

Ambient Temperature: 23.5°C; Liquid Temperature: 22.5°C

DASY6 Configuration:

- Probe: EX3DV4 - SN7630; ConvF(7.32, 7.39, 7.01); Calibrated: 2023-06-02
- Sensor-Surface: 1.4 mm
- Electronics: DAE4 Sn1649; Calibrated: 2023-04-24
- Phantom: Twin-SAM V8.0 (30deg probe tilt); Serial: 2024
- Measurement Software: 16.2.4.2448

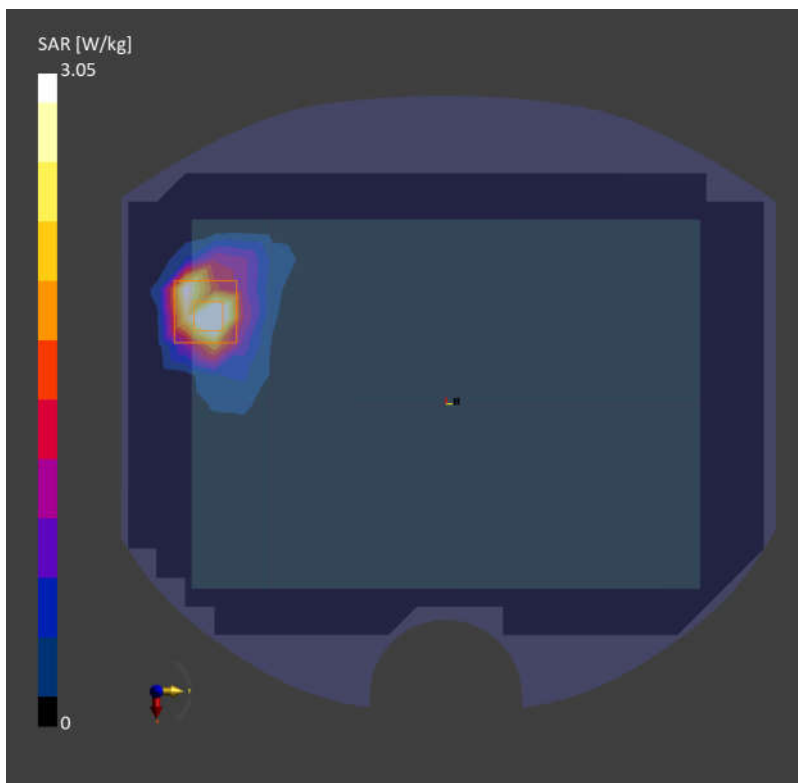
Area Scan (160.0 mm x 220.0 mm): Measurement Grid: 10.0 mm x 10.0 mm

SAR (1g) = 2.90 W/kg; SAR (10g) = 1.27 W/kg;

Zoom Scan (30.0 mm x 30.0 mm x 30.0 mm): Measurement Grid: 5.0 mm x 5.0 mm x 1.5 mm

Power Drift = -0.05 dB

SAR (1g) = 3.05 W/kg; SAR (10g) = 1.22 W/kg;



02_Bluetooth_1Mbps_Bottom Face_0mm_Ch39

Communication System: ISM 2.4 GHz Band; Frequency: 2441.000

Medium: HSL. Medium parameters used: $f = 2441.000$ MHz; $\sigma = 1.84$ S/m; $\epsilon_r = 39.1$

Ambient Temperature: 23.5°C; Liquid Temperature: 22.5°C

DASY6 Configuration:

- Probe: EX3DV4 - SN7630; ConvF(7.32, 7.39, 7.01); Calibrated: 2023-06-02
- Sensor-Surface: 1.4 mm
- Electronics: DAE4 Sn1649; Calibrated: 2023-04-24
- Phantom: Twin-SAM V8.0 (30deg probe tilt); Serial: 2024
- Measurement Software: 16.2.4.2448

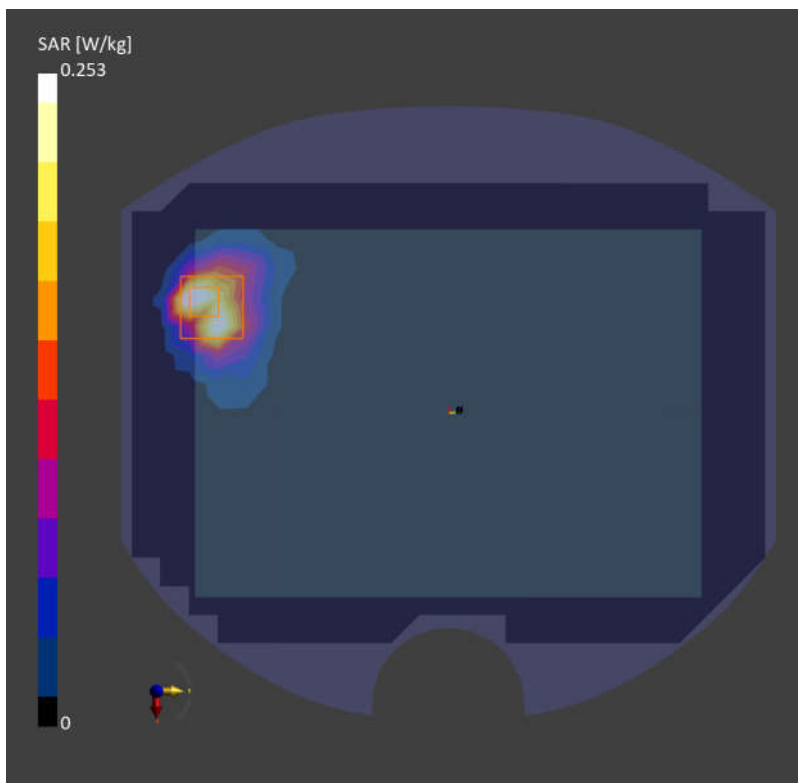
Area Scan (160.0 mm x 220.0 mm): Measurement Grid: 10.0 mm x 10.0 mm

SAR (1g) = 0.216 W/kg; SAR (10g) = 0.101 W/kg;

Zoom Scan (30.0 mm x 30.0 mm x 30.0 mm): Measurement Grid: 5.0 mm x 5.0 mm x 1.5 mm

Power Drift = -0.07 dB

SAR (1g) = 0.253 W/kg; SAR (10g) = 0.102 W/kg;



03_WLAN5GHz_802.11n-HT40 MCS0_Edge 3_0mm_Ch54

Communication System: WLAN 5GHz; Frequency: 5270.000

Medium: HSL. Medium parameters used: $f= 5270.000$ MHz; $\sigma= 4.59$ S/m; $\epsilon_r = 34.9$

Ambient Temperature: 23.5°C; Liquid Temperature: 22.5°C

DASY6 Configuration:

- Probe: EX3DV4 - SN7630; ConvF(5.98, 6.03, 5.81); Calibrated: 2023-06-02
- Sensor-Surface: 1.4 mm
- Electronics: DAE4 Sn1649; Calibrated: 2023-04-24
- Phantom: Twin-SAM V8.0 (30deg probe tilt); Serial: 2024
- Measurement Software: 16.2.4.2448

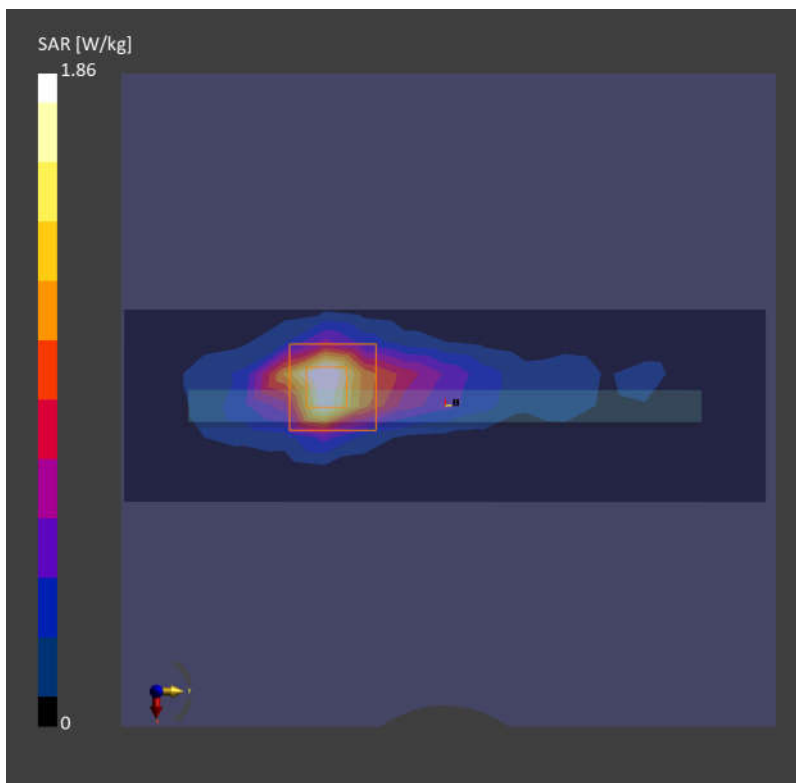
Area Scan (48.0 mm x 160.0 mm): Measurement Grid: 10.0 mm x 10.0 mm

SAR (1g) = 1.50 W/kg; SAR (10g) = 0.484 W/kg;

Zoom Scan (24.0 mm x 22.0 mm x 22.0 mm): Measurement Grid: 4.0 mm x 4.0 mm x 1.4 mm

Power Drift = -0.03 dB

SAR (1g) = 1.86 W/kg; SAR (10g) = 0.556 W/kg;



04_WLAN5GHz_802.11n-HT40 MCS0_Edge 3_0mm_Ch126

Communication System: WLAN 5GHz; Frequency: 5630.000

Medium: HSL. Medium parameters used: $f= 5630.000$ MHz; $\sigma= 4.98$ S/m; $\epsilon_r = 34.3$

Ambient Temperature: 23.5°C; Liquid Temperature: 22.5°C

DASY6 Configuration:

- Probe: EX3DV4 - SN7630; ConvF(5.0, 5.05, 4.85); Calibrated: 2023-06-02
- Sensor-Surface: 1.4 mm
- Electronics: DAE4 Sn1649; Calibrated: 2023-04-24
- Phantom: Twin-SAM V8.0 (30deg probe tilt); Serial: 2024
- Measurement Software: 16.2.4.2448

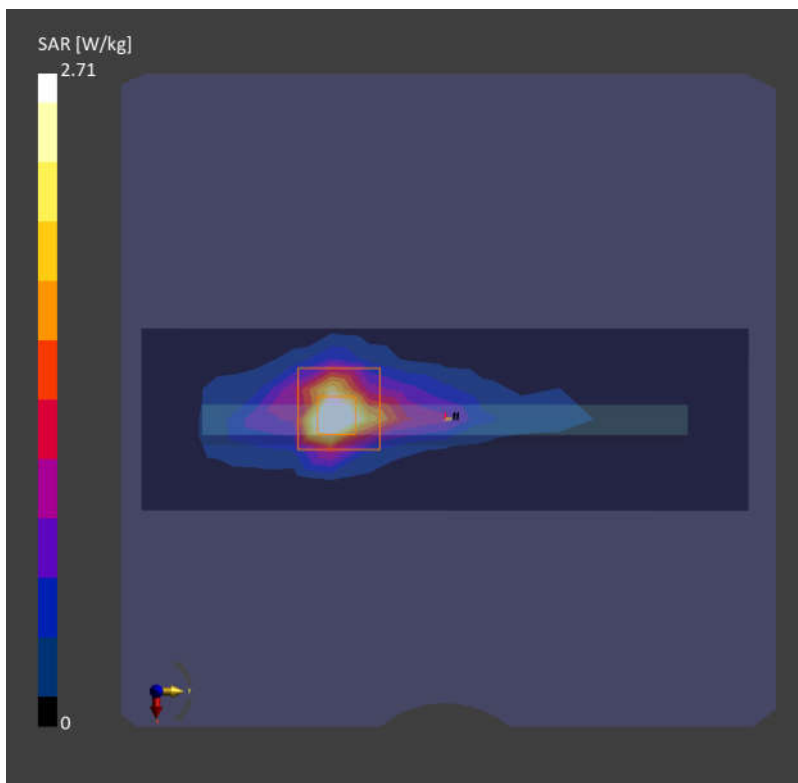
Area Scan (48.0 mm x 160.0 mm): Measurement Grid: 10.0 mm x 10.0 mm

SAR (1g) = 2.30 W/kg; SAR (10g) = 0.677 W/kg;

Zoom Scan (24.0 mm x 22.0 mm x 22.0 mm): Measurement Grid: 4.0 mm x 4.0 mm x 1.4 mm

Power Drift = -0.05 dB

SAR (1g) = 2.71 W/kg; SAR (10g) = 0.769 W/kg;



05_WLAN5GHz_802.11n-HT40 MCS0_Edge 3_0mm_Ch159

Communication System: WLAN 5GHz; Frequency: 5795.000

Medium: HSL. Medium parameters used: $f= 5795.000$ MHz; $\sigma= 5.17$ S/m; $\epsilon_r = 34.0$

Ambient Temperature: 23.5°C; Liquid Temperature: 22.5°C

DASY6 Configuration:

- Probe: EX3DV4 - SN7630; ConvF(5.31, 5.35, 5.18); Calibrated: 2023-06-02
- Sensor-Surface: 1.4 mm
- Electronics: DAE4 Sn1649; Calibrated: 2023-04-24
- Phantom: Twin-SAM V8.0 (30deg probe tilt); Serial: 2024
- Measurement Software: 16.2.4.2448

Area Scan (48.0 mm x 160.0 mm): Measurement Grid: 10.0 mm x 10.0 mm

SAR (1g) = 2.15 W/kg; SAR (10g) = 0.627 W/kg;

Zoom Scan (24.0 mm x 22.0 mm x 22.0 mm): Measurement Grid: 4.0 mm x 4.0 mm x 1.4 mm

Power Drift = 0.04 dB

SAR (1g) = 2.67 W/kg; SAR (10g) = 0.737 W/kg;

