

# Antenna Specification

## Frequency Range of operation

- Wi-Fi: 2.4 to 2.48 GHz and 5.15 to 5.85 GHz
- Bluetooth (2.4 GHz): 2.4 to 2.48 GHz

## Antenna Types:

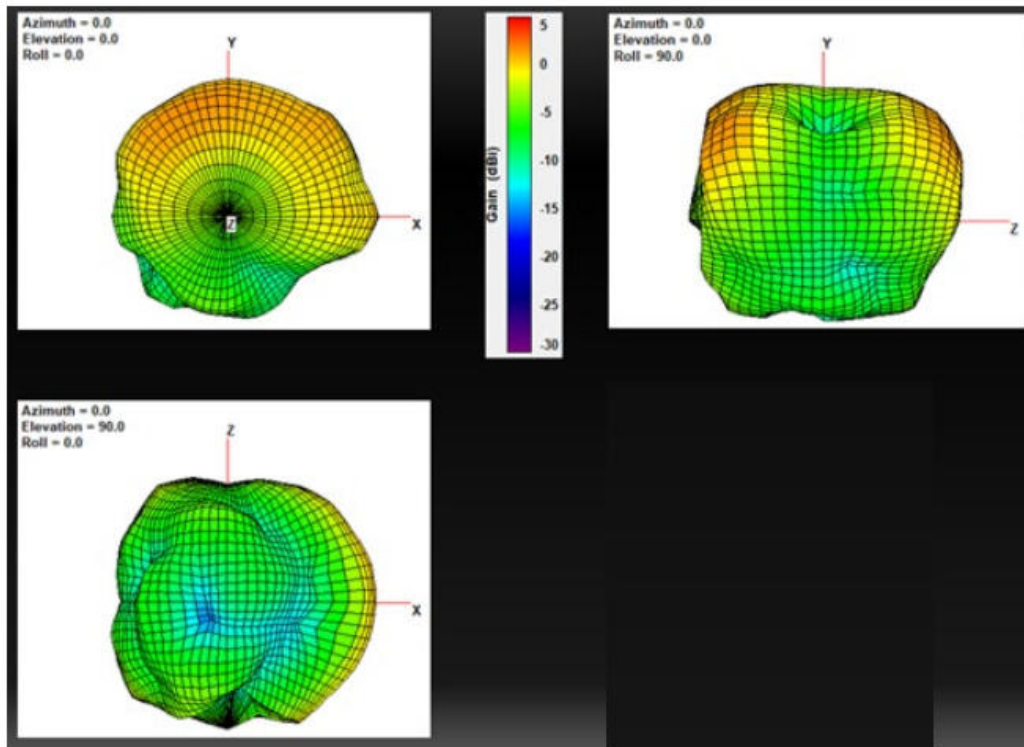
- 2.4 GHz: PIFA (PCB Antenna, ANT0)
- 5 GHz: Monopole (PCB Antenna, ANT1)

## Peak Antenna Gain:

Band	Peak Gain (dbi)	
	Ant0	Ant1
	PIFA	Monopole
BT/Wi-Fi at 2.4 GHz	3.72	-
Band 1 (5150-5250 MHz)	-	4.37
Band 2 (5250-5350 MHz)	-	4.40
Band 3 (5470-5725 MHz)	-	4.96
Band 4 (5725-5850 MHz)	-	4.96

# Antenna Pattern

## 2.4 GHz (ANT0)



## 5 GHz (ANT1)

