

System Check_Head_2450MHz

DUT: D2450V2-SN:1040

Communication System: ; Frequency: 2450.0

Medium: HSL. Medium parameters used: $f= 2450.0$ MHz; $\sigma= 1.78$ S/m; $\epsilon_r = 40.6$

Ambient Temperature: 23.2°C; Liquid Temperature: 22.7°C

DASY6 Configuration:

- Probe: EX3DV4 - SN7764; ConvF(8.25, 8.25, 8.25); Calibrated: 2022-09-30
- Sensor-Surface: 1.4 mm
- Electronics: DAE4 Sn1279; Calibrated: 2022-10-26
- Phantom: ELI V8.0 (20deg probe tilt); Serial: 2151
- Measurement Software: cDASY6 V6.6.0.13926

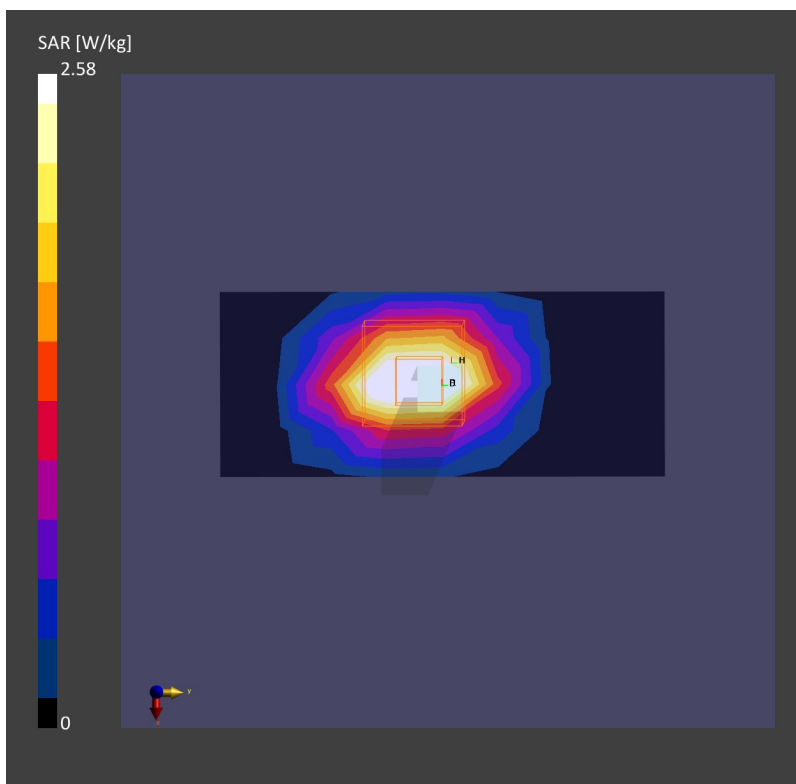
Area Scan (40.0 mm x 96.0 mm): Measurement Grid: 12.0 mm x 12.0 mm

SAR (1g) = 2.41 W/kg; SAR (10g) = 1.03 W/kg;

Zoom Scan (30.0 mm x 30.0 mm x 30.0 mm): Measurement Grid: 5.0 mm x 5.0 mm x 5.0 mm

Power Drift = -0.03 dB

SAR (1g) = 2.58 W/kg; SAR (10g) = 1.20 W/kg;



System Check_Head_5250MHz

DUT: D5GHzV2-SN:1113

Communication System: ; Frequency: 5250.0

Medium: HSL. Medium parameters used: $f= 5250.0$ MHz; $\sigma= 4.69$ S/m; $\epsilon_r = 35.7$

Ambient Temperature: 23.1°C; Liquid Temperature: 22.9°C

DASY6 Configuration:

- Probe: EX3DV4 - SN7764; ConvF(5.65, 5.65, 5.65); Calibrated: 2022-09-30
- Sensor-Surface: 1.4 mm
- Electronics: DAE4 Sn1279; Calibrated: 2022-10-26
- Phantom: ELI V8.0 (20deg probe tilt); Serial: 2151
- Measurement Software: cDASY6 V6.6.0.13926

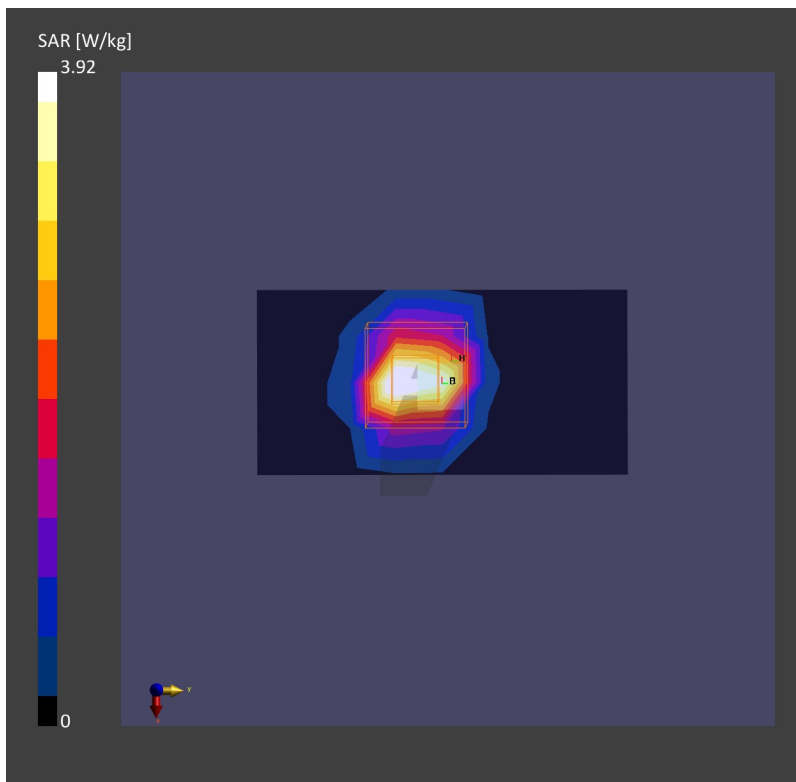
Area Scan (40.0 mm x 80.0 mm): Measurement Grid: 10.0 mm x 10.0 mm

SAR (1g) = 3.55 W/kg; SAR (10g) = 1.02 W/kg;

Zoom Scan (24.0 mm x 24.0 mm x 22.0 mm): Measurement Grid: 4.0 mm x 4.0 mm x 1.4 mm

Power Drift = -0.09 dB

SAR (1g) = 3.92 W/kg; SAR (10g) = 1.11 W/kg;



System Check_Head_5600MHz

DUT: D5GHzV2-SN:1113

Communication System: ; Frequency: 5600.0

Medium: HSL. Medium parameters used: $f= 5600.0$ MHz; $\sigma= 5.11$ S/m; $\epsilon_r = 35.1$

Ambient Temperature: 23.2°C; Liquid Temperature: 22.8°C

DASY6 Configuration:

- Probe: EX3DV4 - SN7764; ConvF(4.9, 4.9, 4.9); Calibrated: 2022-09-30
- Sensor-Surface: 1.4 mm
- Electronics: DAE4 Sn1279; Calibrated: 2022-10-26
- Phantom: ELI V8.0 (20deg probe tilt); Serial: 2151
- Measurement Software: cDASY6 V6.6.0.13926

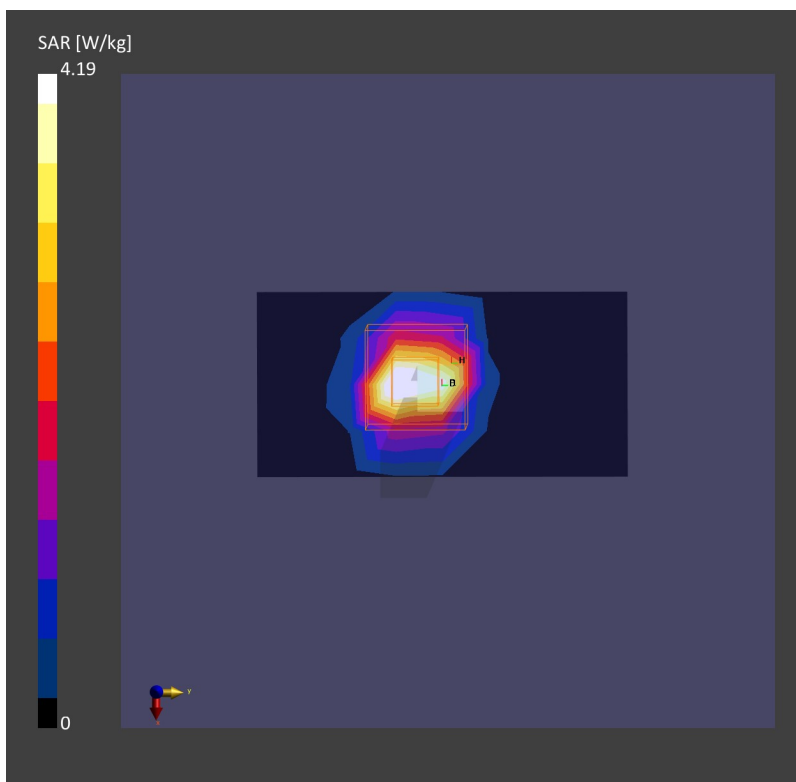
Area Scan (40.0 mm x 80.0 mm): Measurement Grid: 10.0 mm x 10.0 mm

SAR (1g) = 3.93 W/kg; SAR (10g) = 1.11 W/kg;

Zoom Scan (24.0 mm x 24.0 mm x 22.0 mm): Measurement Grid: 4.0 mm x 4.0 mm x 1.4 mm

Power Drift = -0.02 dB

SAR (1g) = 4.19 W/kg; SAR (10g) = 1.17 W/kg;



System Check_Head_5750MHz

DUT: D5GHzV2-SN:1113

Communication System: ; Frequency: 5750.0

Medium: HSL. Medium parameters used: $f= 5750.0$ MHz; $\sigma= 5.28$ S/m; $\epsilon_r = 34.8$

Ambient Temperature: 23.3°C; Liquid Temperature: 22.8°C

DASY6 Configuration:

- Probe: EX3DV4 - SN7764; ConvF(5.1, 5.1, 5.1); Calibrated: 2022-09-30
- Sensor-Surface: 1.4 mm
- Electronics: DAE4 Sn1279; Calibrated: 2022-10-26
- Phantom: ELI V8.0 (20deg probe tilt); Serial: 2151
- Measurement Software: cDASY6 V6.6.0.13926

Area Scan (40.0 mm x 80.0 mm): Measurement Grid: 10.0 mm x 10.0 mm

SAR (1g) = 3.66 W/kg; SAR (10g) = 1.00 W/kg;

Zoom Scan (24.0 mm x 24.0 mm x 22.0 mm): Measurement Grid: 4.0 mm x 4.0 mm x 1.4 mm

Power Drift = 0.06 dB

SAR (1g) = 3.89 W/kg; SAR (10g) = 1.12 W/kg;

