

#01_Bluetooth_1Mbps_Left inner surface_0mm_Ch78

Communication System: Bluetooth; Frequency: 2480 MHz; Duty Cycle: 1:1.299

Medium: HSL_2450_220923 Medium parameters used: $f = 2480$ MHz; $\sigma = 1.875$ S/m; $\epsilon_r = 39.443$; $\rho = 1000$ kg/m³

Ambient Temperature : 23.6 °C ; Liquid Temperature : 22.6 °C

DASY5 Configuration:

- Probe: EX3DV4 - SN3976; ConvF(7.85, 7.85, 7.85) @ 2480 MHz; Calibrated: 2022/1/27
- Sensor-Surface: 1.4mm (Mechanical Surface Detection)
- Electronics: DAE4 Sn1707; Calibrated: 2022/1/12
- Phantom: SAM_Left; Type: SAM; Serial: 1796
- Measurement SW: DASY52, Version 52.10 (4); SEMCAD X Version 14.6.14 (7501)

Area Scan (51x101x1): Interpolated grid: dx=1.200 mm, dy=1.200 mm

Maximum value of SAR (interpolated) = 0.522 W/kg

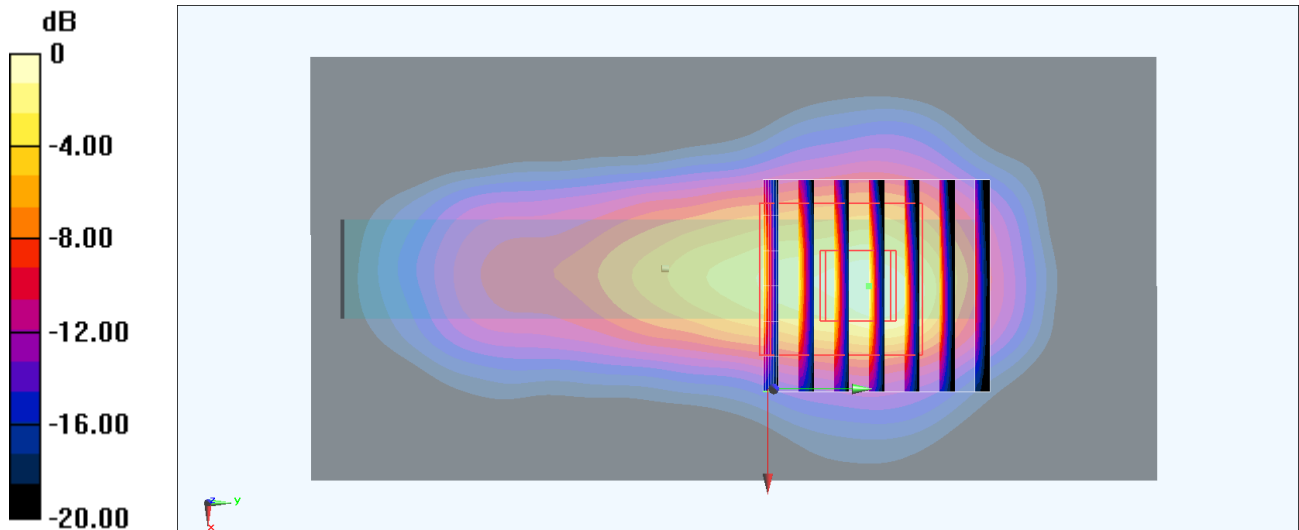
Zoom Scan (7x7x7)/Cube 0: Measurement grid: dx=5mm, dy=5mm, dz=5mm

Reference Value = 13.55 V/m; Power Drift = -0.04 dB

Peak SAR (extrapolated) = 0.653 W/kg

SAR(1 g) = 0.257 W/kg; SAR(10 g) = 0.101 W/kg

Maximum value of SAR (measured) = 0.515 W/kg



0 dB = 0.522 W/kg = -2.82 dBW/kg