

## Antenna Report

### Frequency range:

BT Antenna:

- BLE: 2.4 to 2.48 GHz

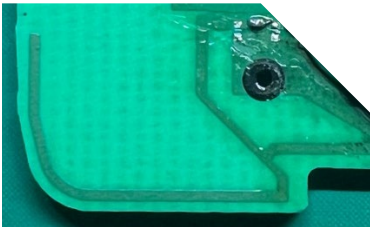
### Antenna Types:

BLE antenna: PCB IFA antenna

### Antenna Gain:

M hz	Peak Gain
2400	2.69
2410	3.18
2420	3.55
2430	3.27
2440	3.21
2450	3.45
2460	3.48
2470	3.54
2480	3.63

### Antenna Structure:



## BLE antenna

### Measurement Test Method:

Solder pigtailed on feeding point of antenna and measure passive antenna performance by VNA and OTA chamber system.

**Test equipment:** Agilent E5071C

**Test chamber:** GOERTEK

**Address:** No. 268 Dongfang Road, Kuiwen District, Weifang City, Shandong Province, China

**Chamber info:** ETS\_AMS8500

**Calibration info:** Agilent E5071C\_2023/01/05

**Test engineer:** Liuxing

## Software for Measurement:

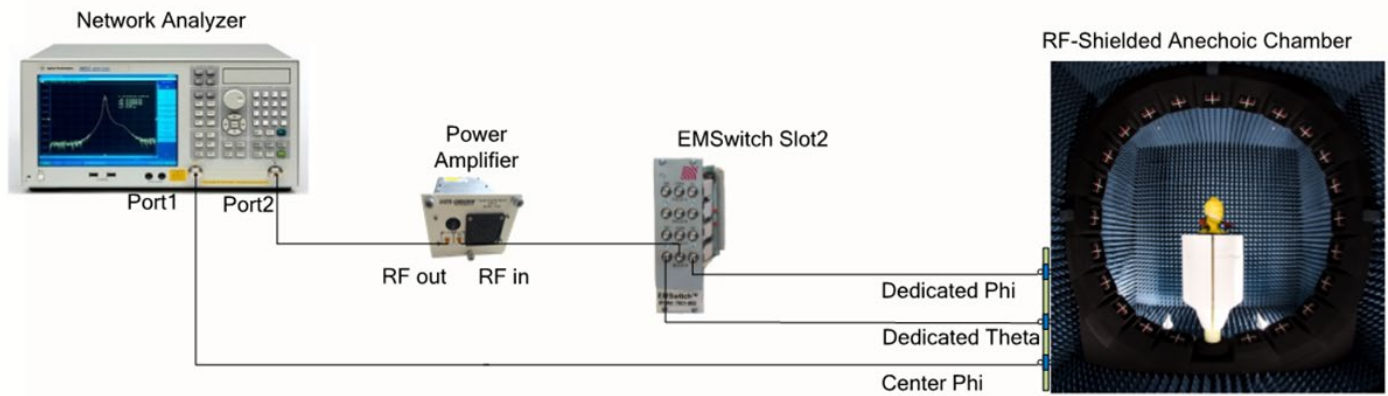
EMQuest

## Test Set-up:

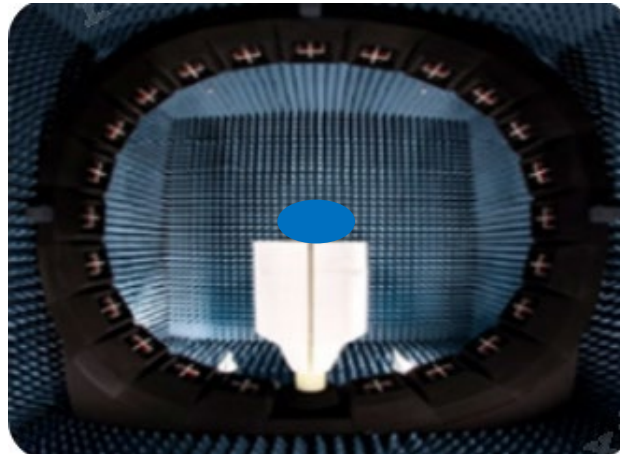
1. Set up the device on the turn table and connect the pigtailed to the RF cable.
2. Measure the 3D passive performance according to the following coordinate axis.

Turntable – Phi: 0-165°, step size: 15°, clockwise rotation

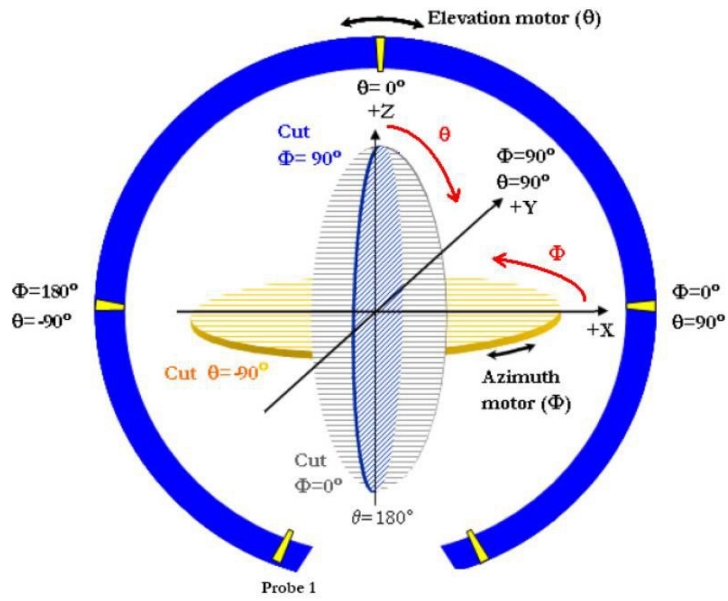
Please see separate test set-up exhibit for setup photographs



The position of the product in the chamber

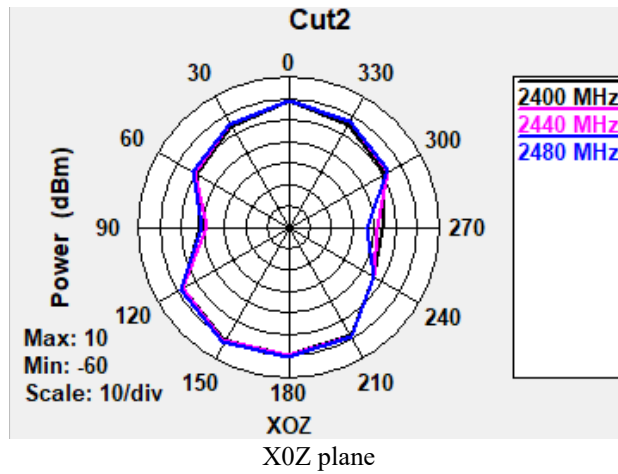
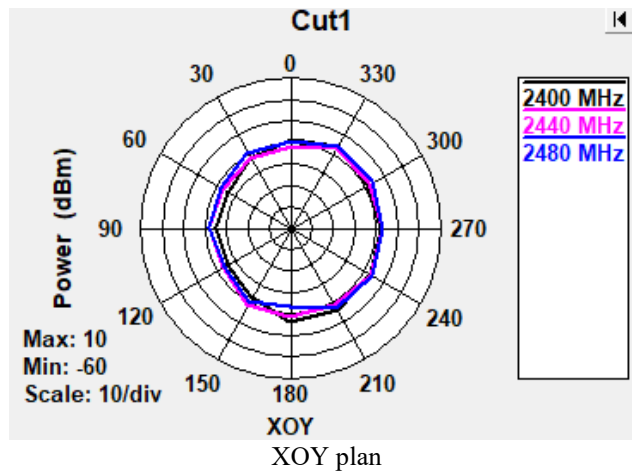


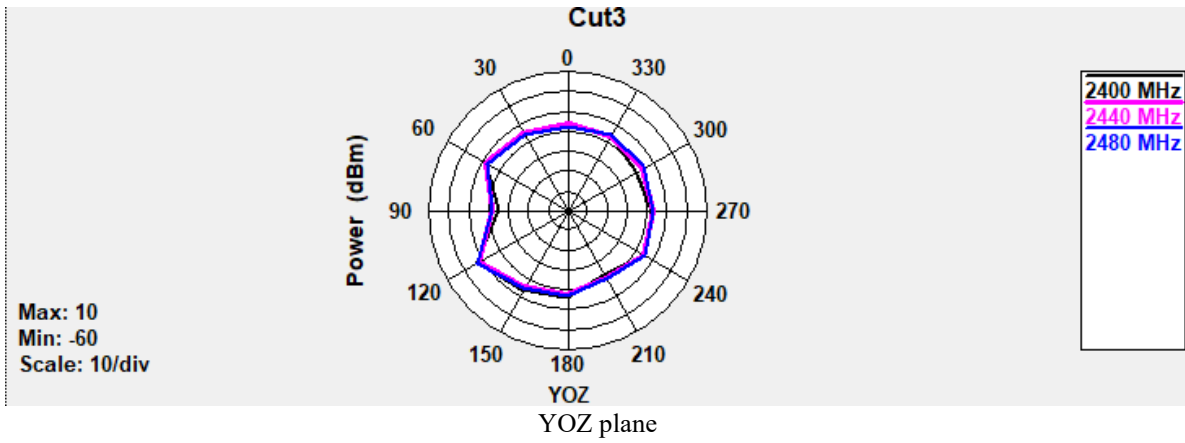
Antenna Radiated Pattern Orientation:



**BLE Antenna**

**2D**





3D (2440MHz)

