

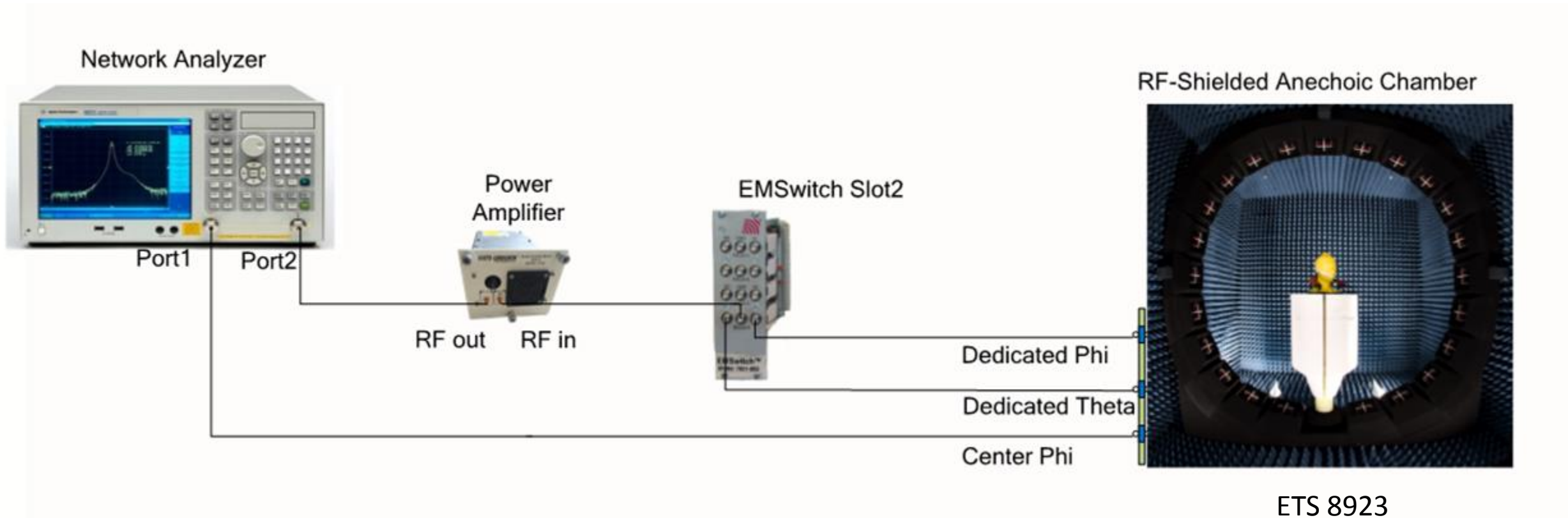
Frequency range and operation:

Bluetooth Antenna: 2.4 to 2.48GHz

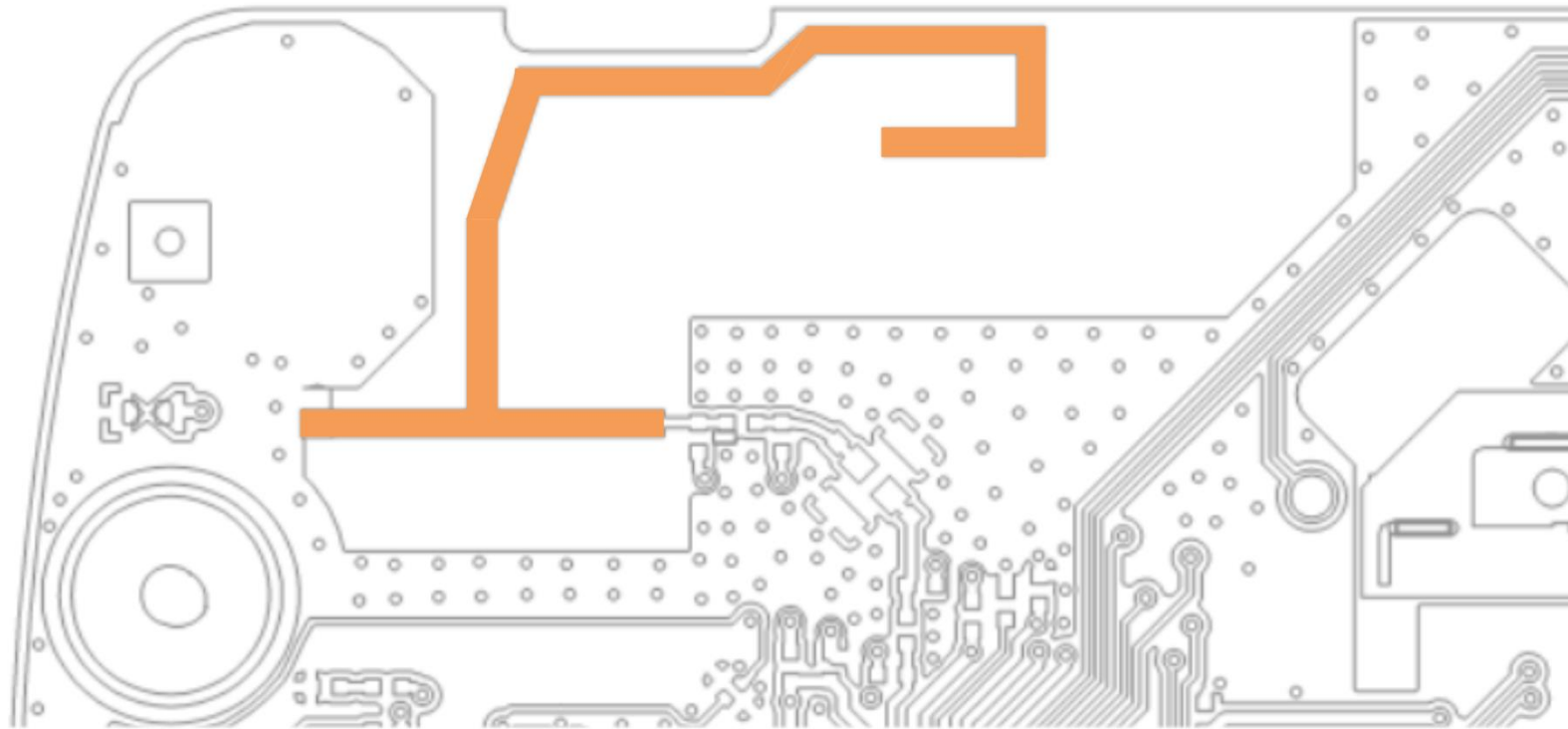
Antenna type:

Bluetooth Antenna : PCB Inv F type

OTA equipment



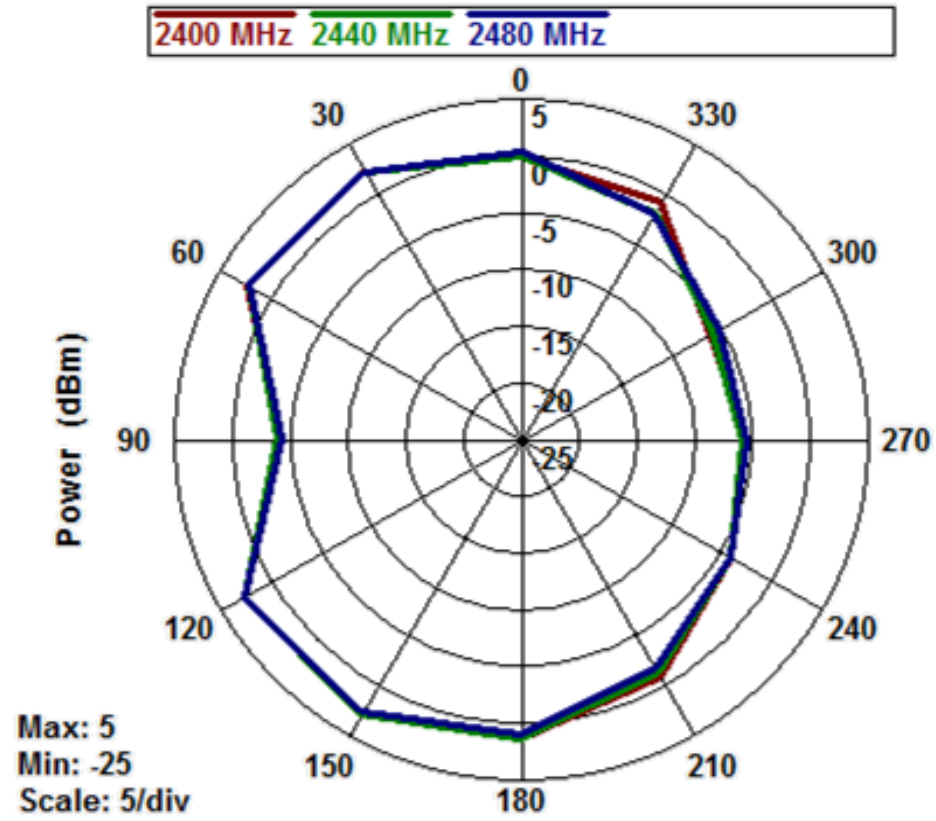
Antenna structure



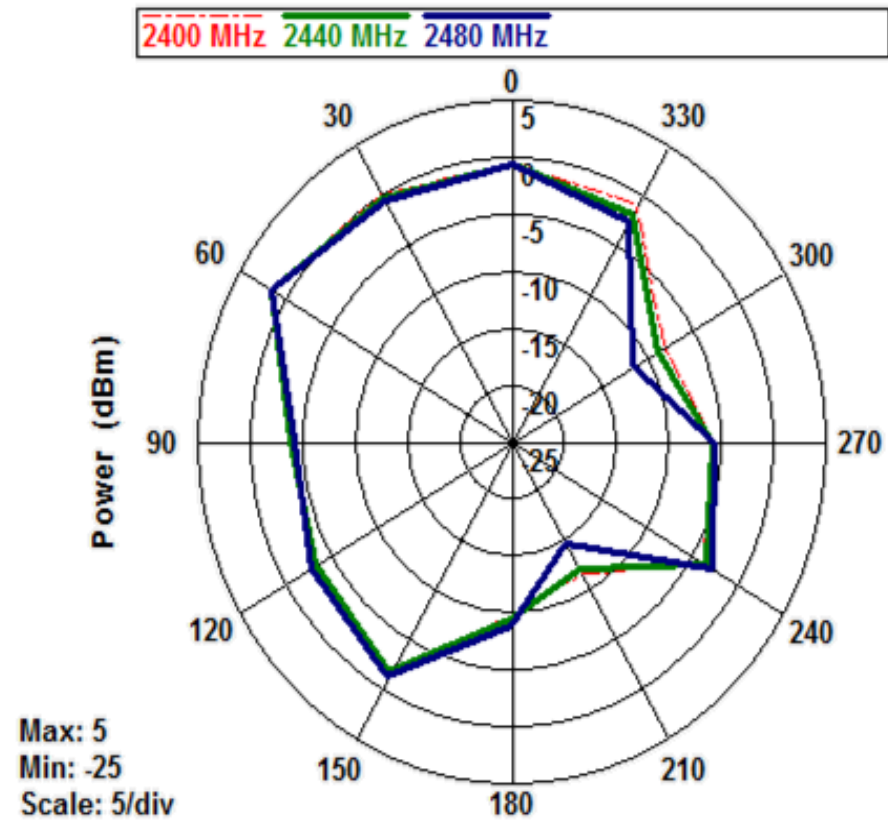
Antenna Peak Gain

MHz	Peak Gain
2400	3.00
2410	3.17
2420	3.03
2430	2.97
2440	3.08
2450	3.12
2460	2.96
2470	2.96
2480	2.85

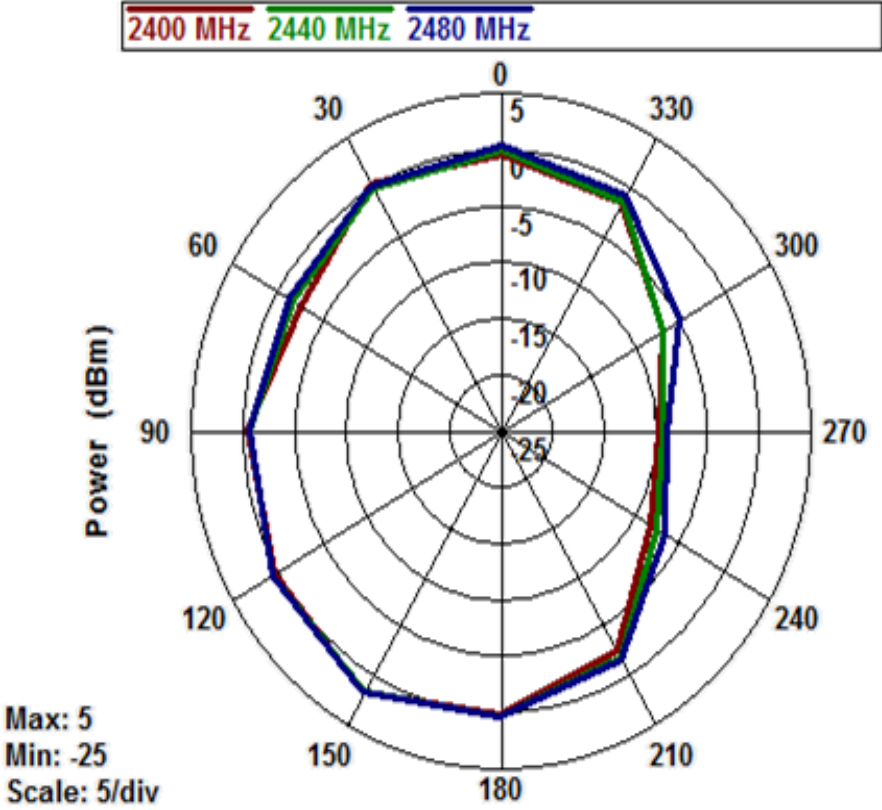
XY Axis



XZ Axis



YZ Axis



3D

