芯海科技  
CHIPSEA

# 蓝牙天线规格 (Model: CSM92F25)

## Bluetooth antenna specification

深圳市芯海科技有限公司

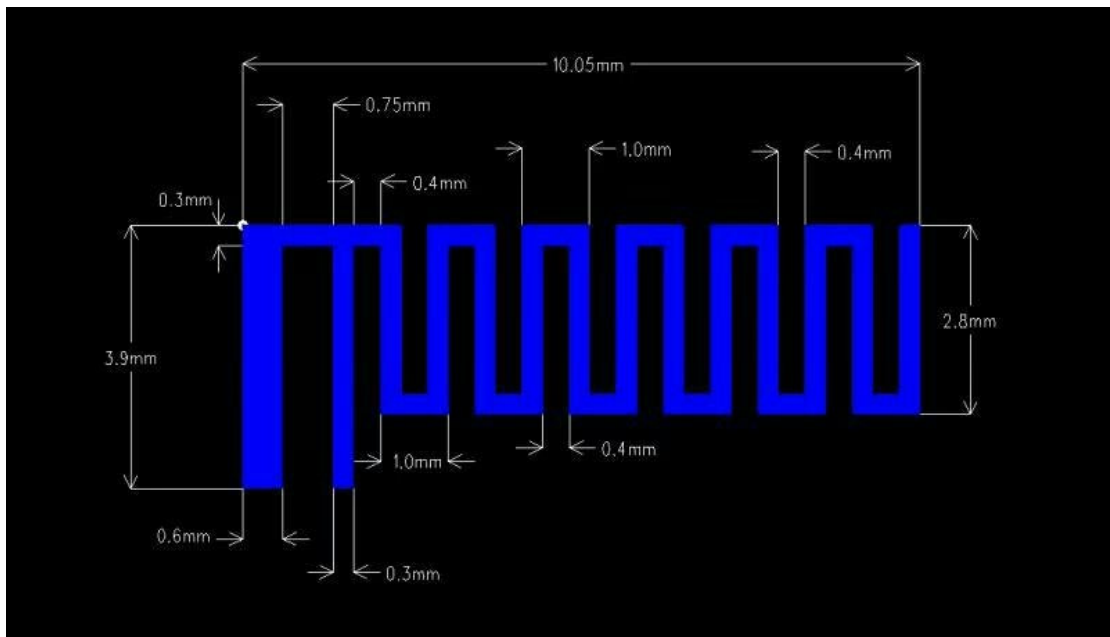
Chipsea Technologies (Shenzhen) Corp.

9F, Block A, Garden City Digital Building, No.1  
079 Nanhai Road, Nanshan District, Shenzhen,  
China

## 1: Antenna Description

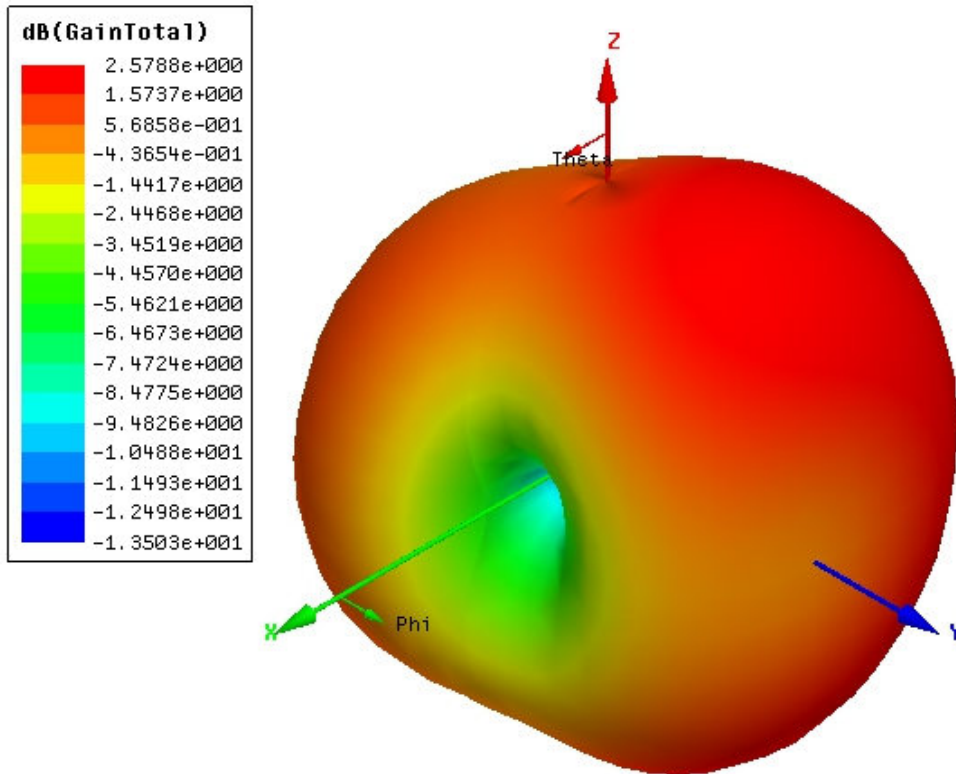
Antenna Type	Microtrip Antenna
Antenna peak gain	2.6dBi
Frequency range	2.402GHz~2.480GHz
Connect type	Direct Connect

## 2: Antenna picture on the PCB board



## 3: Antenna radiation of 3D polar

Solution frequency at 2.44G



### 3: Antenne radiation pattern

