

深圳旭航通讯科技有限公司

Shenzhen Xuhang Communication
Technology Co., Ltd

Antenna specification

客户 CUSTOMER	Defigo AS
客户料号 CUSTOMER NO.	
供方品名 PART NAME	WIFI ANTENNA
规格名称 SUPPLIER NO.	XH240008-B

客户确认 CUSTOMER APPROVED BY		
检验 APPROVAL	审核 CHIEF	批准 SUPERVISOR

设计 DESIGN	审核 CHECK	批准 APPROVAL
Luo	Robert	SHANG

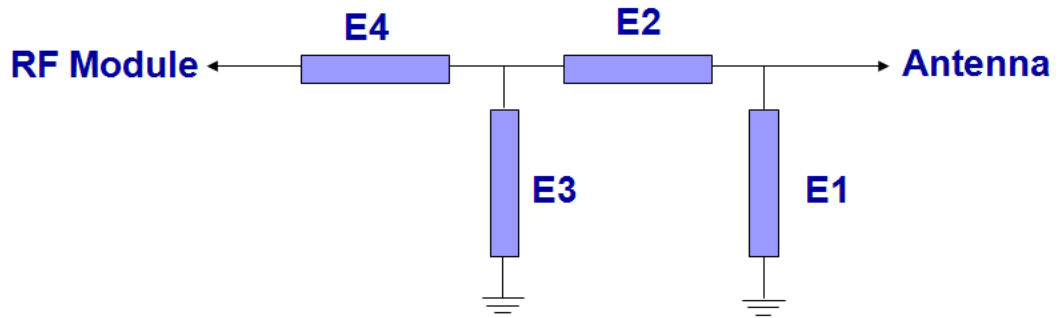
Date: February 24, 2024

TEST REPORTS

频率 Frequency	WIFI(2400~2500MHz; 5150~5850MHz)
阻抗 Impedance	50 Ohm Nominal
驻波比 V.S.W.R	≤2.0
回波损耗 Return Loss	-10dB Max
辐射 Radiation	Omni-directional
增益 Gain(Peak)	2.4G;1.98dBi 5G;3.04dBi
极化方式 Polarization	Linear,Vertical
功率 Admitted Power	1W
连接器 Connector	I-PEX I
Physical Properties	
天线材质 Antenna Material	FPC
线材类型 Cable Type	O.D.1.13mm
工作温度 Operating Temp.	-10-+60℃
存储温度 Storage Temp.	-10-+70℃
线材颜色 Cable Color	CSM81P-B;Gray

匹配电路

Matching Circuits

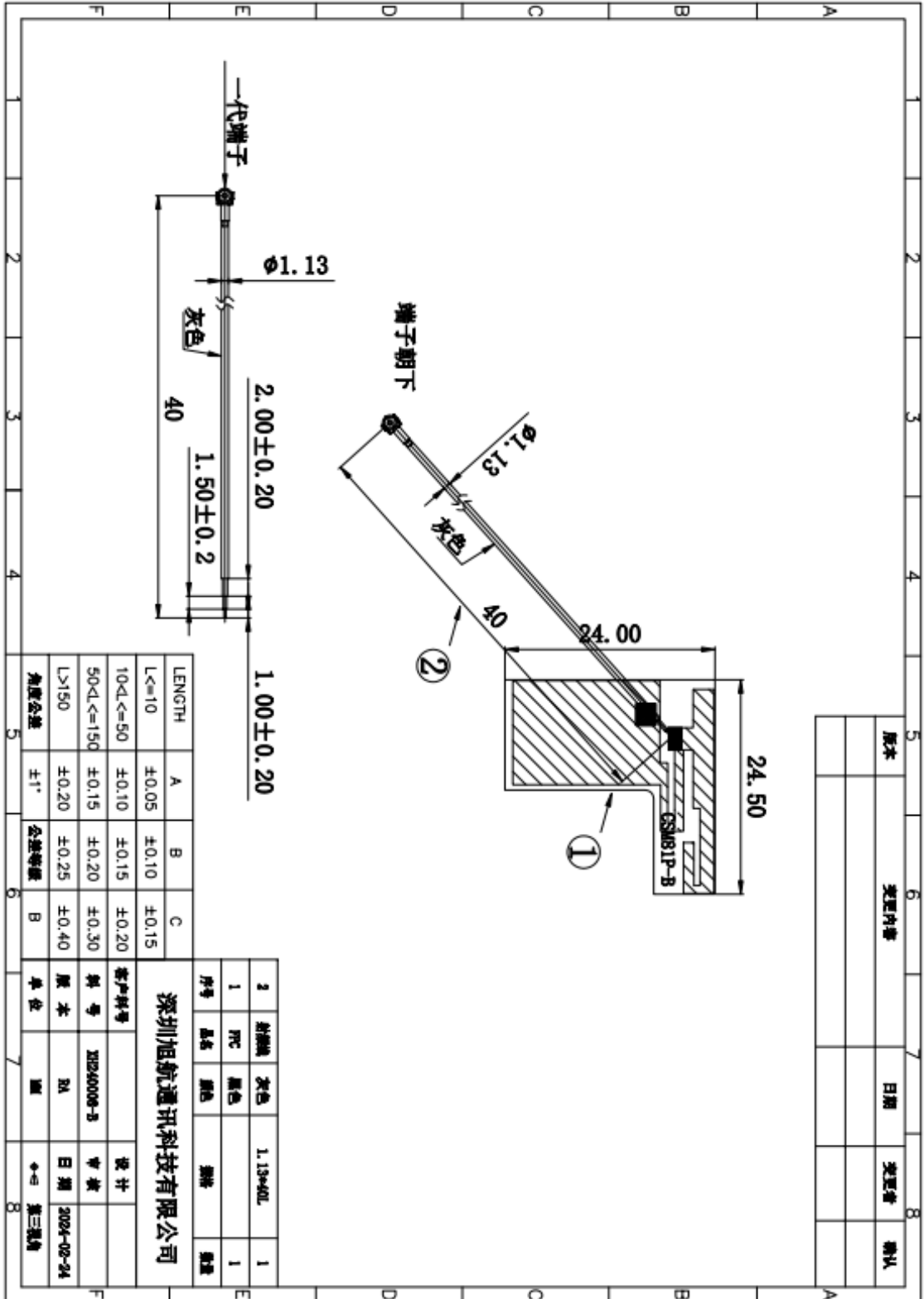


Element	Value	Vender
E1(0402)		
E2(0402)	0Ω	
E3(0402)		
E4(0402)	0Ω	

原匹配电路无修改

The original matching circuit has not been modified

工程图 DRAWING



版本	变更内容	日期	变更者	确认

LENGTH	A	B	C
$L \leq 10$	± 0.05	± 0.10	± 0.15
$10 < L \leq 50$	± 0.10	± 0.15	± 0.20
$50 < L \leq 150$	± 0.15	± 0.20	± 0.30
$L > 150$	± 0.20	± 0.25	± 0.40
角度公差	$\pm 1''$	公差等级	B

序号	品名	规格	数量
2	引线	灰色	1.13*40L
1	PC	黑色	1

深圳旭航通讯科技有限公司

客户料号	设计
料号	审核
版本	日期
2A	2024-02-24
单位	第三层楼

测试数据

Test Data

2.4G

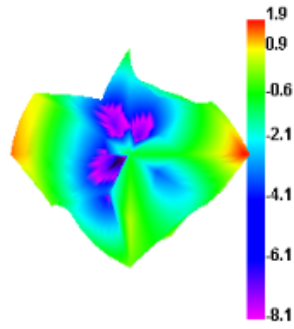
Freq (MHz)	Effi (%)	Gain (dBi)
2400	57.67	1.92
2410	54.23	1.56
2420	59.22	1.98
2430	53.42	1.57
2440	51.85	1.52
2450	47.95	1.27
2460	45.8	1.21
2470	51.77	1.72
2480	44.8	1.25
2490	54.97	1.94
2500	49.54	1.31

5G

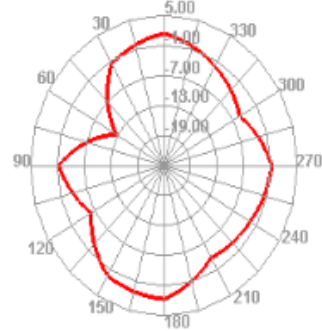
Freq (MHz)	Effi (%)	Gain (dBi)
5150	45.85	3.04

3D 方向图

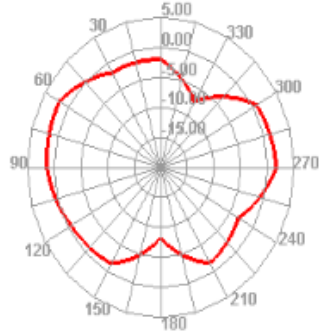
2400.000MHz



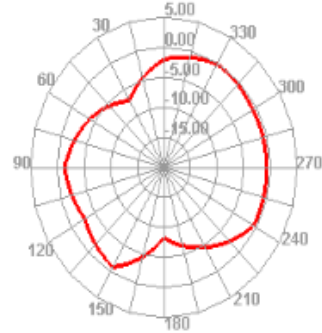
2400.000MHz H



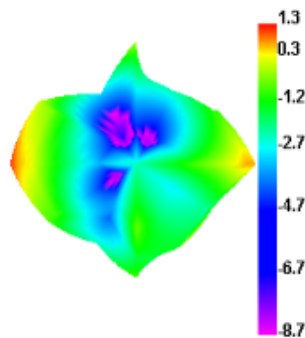
2400.000MHz E1



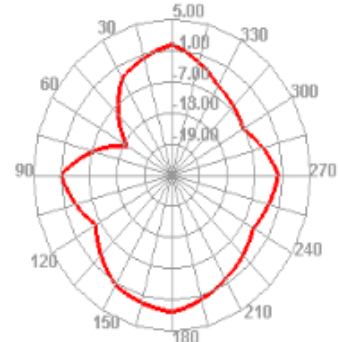
2400.000MHz E2



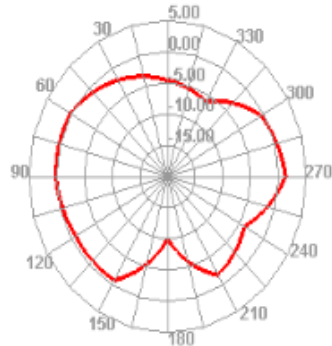
2450.000MHz



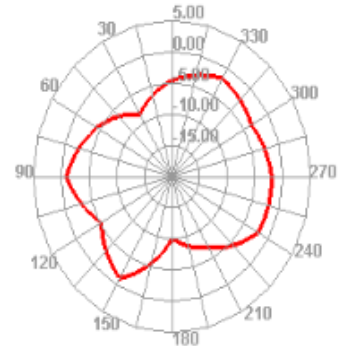
2450.000MHz H



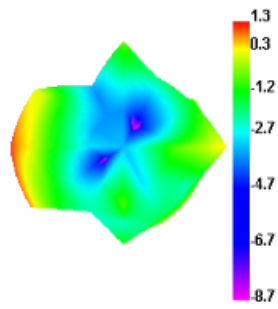
2450.000MHz E1



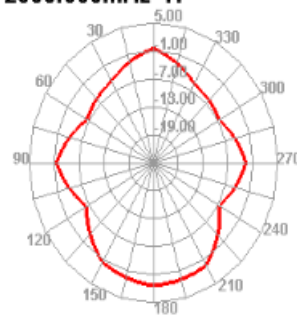
2450.000MHz E2



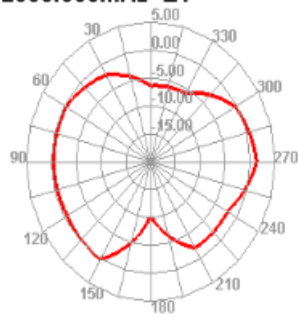
2500.000MHz



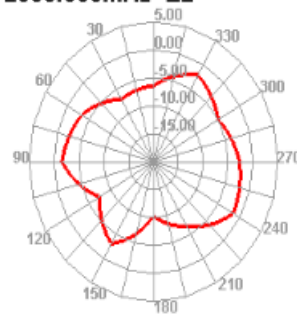
2500.000MHz H



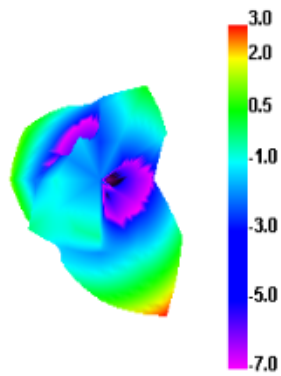
2500.000MHz E1



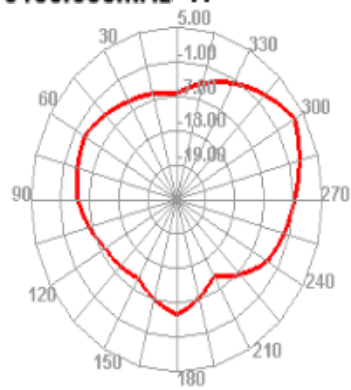
2500.000MHz E2



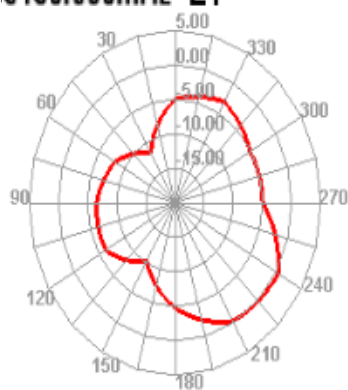
5150.000MHz



5150.000MHz H



5150.000MHz E1



5150.000MHz E2

