

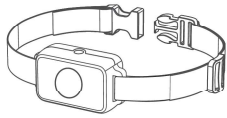
REMOTE DOG TRAINING COLLAR

USER MANUAL

GE-G22



This is a humane teaching device for your dog to correct bad behavior and train obedience. Do not use it as a punishment & do not overuse it on your pets.



NOTE Please read the user guide carefully before using the product and keep the manual properly.

support@haoteful.com

Please Page Right

GE-G22

Specifications

Product Name	Dog Training Collar
Product Mode	GE-G22
Material	ABS+Nylon
Remote Range	2600FT/867YD
Remote Control Frequency	433MHz FSK
Receiver Sensitivity	-110dbm 9.6K
Battery Type	Lithium-ion
Battery Capacity	Remote: 500mAh, 1.85Wh Receiver: 350mAh, 1.11Wh
Charging Voltage	TYPE-C 5V/1A
Full Charging Time	1.2H
Continuous Working Time	6H
Working Time	Remote: 30 days Receiver: 15 days
Waterproof Rating	Remote: NOT waterproof Receiver: IPX7 waterproof
Working Temperature	0-40 C/32-104F
Relative Humidity	20%-90%
Compatibility	Most Breeds and Sizes of Dogs >6 months old 7-25in neck perimeter 8lbs-120 lbs

Design by Haoteful and Manufactured in China

Contents

Important Safety Information	1
What's in The Box	2
About the Remote	3
About the Collar	4
How to Operate	5
Main Features	6
FAQ	7
General Training Tips	8 9
Certification Statements	10 11

Important Safety Information

Warning and Caution

Warning

- 1.This product is only designed for training. Punishment or cruelty is prohibited.
- 2.Do not use it on aggressive dogs because they may have overreaction to cause hurt/injury to their owner or others. If you are unsure whether you can train your dog with our product, please consult professional veterinarian or certified trainer.
- 3.It is not a toy. Keep the product out of reach of children. Only responsible family members can use it.

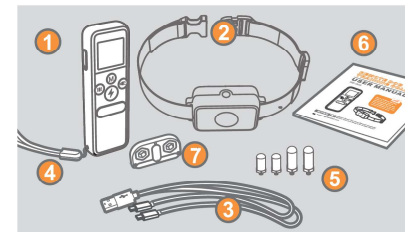
Caution

- 1.Please use the product when your pet is under control in a safe area.
- 2.Please use the product only on healthy dogs.
- 3.Your dogs should be at least 6 months old. Your pet should be able to recognize basic obedience commands such as "Sit" or "Stay".
- 4.Please wear the collar on your dog properly. Wearing too loose may cause bad contact while too tight may cause injury to the dog's neck skin.
- 5.Please do not wear the collar more than 10 hours a day for your dogs.
- 6.If it is too big worn for a long time, please adjust the position or take the collar off every 2 hours.
- 7.Please check the neck skin condition every day to avoid rash/sores in time. If signs of skin discomfort are found on the dog's neck, please stop using it and consult the veterinarian if needed.
- 8.Please do not tie another dog leash to the receiver collar.
- 9.When the collar is on, do not directly touch the contact probes with your body.
- 10.When the product is not used for a long time, please charge it every 90 days.
- 11.Please charge in time when it is in low power to avoid irreparable damage caused by over-discharge of the battery.

What's in The Box

Package Contents

Components Name



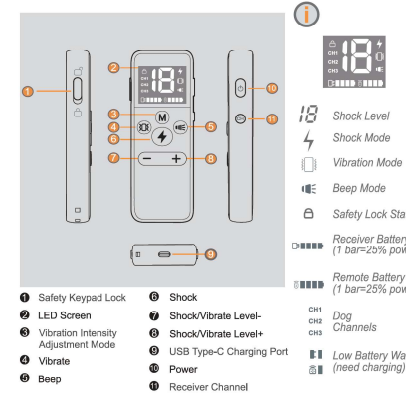
1. Training Remote
2. Training Receiver (Collar)
3. Type C USB Charging Cable
4. Wrist Strap
5. Long and Short E-Shock Probes
6. User Manual
7. Test Unit & Probe Driver

* The shorter E-Shock probe has been assembled on the collar.

About the Remote

Introduction of Components

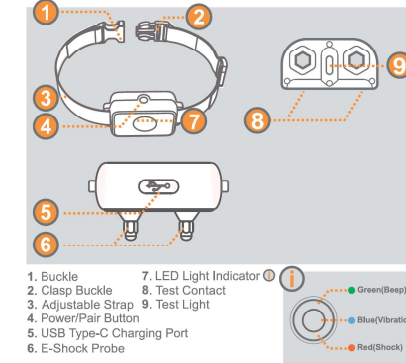
Training Remote



About the Collar

Introduction of Components

Training Receiver



How to Operate

Operation Steps

Operation Steps

1. Turn on/off the remote: long press the power button for 2s.
2. Turn on/off the receiver: long press the power button for 2s.
3. Dog selection: Press the button to cycle among 1-2-3 channels. The default channel for 1-receiver package is channel 1.
4. Beep training: Press the button, the receiver will star beeping, long press it and the receiver will continuously beep for at most 15s.
5. Vibration training: Press the button, the receiver will star vibrating, long press it and the receiver will continuously vibrate for at most 45s.
6. Shock training: Press the button, the receiver will release electricity shock 1 time, long press it and the receiver will continuously release electricity shock for at most 4s. (note: 0 means the shock is shut down)

CUSTOMER SUPPORT

support@haoteful.com
www.haoteful.com

SUPPORT HOURS

Monday - Friday
9:00 am - 6:00 pm



Operation Video

Main Features

Main Features Introduction

3 Safe & Effective Training Modes

- Beep Mode:** the tone is loud enough and the volume is fixed
- Vibration Mode:** adjustable intensity with 1-8 levels
- Shock Mode:** adjustable intensity with 0-18 levels

Main Features

- 1.Easy Use: Independent large buttons, small size remote, one-hand operation.
- 2.Soft & Skin-friendly: Soft & Durable Nylon Strap + Easy Clasp Buckle.
- 3.Wide Remote Range: The remote control distance range is up to 2600FT (the maximum effective range in barrier-free area).
- 4.Support 3 Channels: You can train 3 dogs at the same time with 1 remote. (Note: additional receiver collars need to be ordered separately.)
- 5.Large Display Screen: The led screen is large enough and all information you need is clearly visible even in the sunshine.
- 6.Dual Battery Life Display: Battery information of both the remote and the receiver can look clearly on the display.
- 7.Safety Keypad Lock: Avoid mis-operation or accidental signal. Say goodbye to unexpected harm to your pet.
- 8.IPX7 100% Waterproof Receiver Collar: but the remote is NOT waterproof.
- 9.Rechargeable: rechargeable via the included USB Type-C charging cable by your PC/laptop/power bank. Time for Battery Fully Charged: 1-2 Hours. (Note: Power adapter is not included in the package.)
- 10.Long Battery Life: Remote: 30 days; Receiver: 15 days (in full charge status)

FAQ

Frequently Asked Questions

FAQ

- Q: Is the static stimulation safe for my pet?**
A: While the stimulation is unpleasant, it is harmless to your pet.
- Q: Why doesn't the pet respond when operating the remote control?**
A: There may be two reasons. First, beep and vibration are not enough to stimulate the pet; second, the collar is loose, and the strap needs to be tightened to make the contacts touch the skin.
- Q: Once my pet is trained and has been obeying my commands, will he have to continue to wear the training collar?**
A: Probably not. They may need to wear the training collar from time to time for reinforcement.
- Q: Why do many similar products cause a more serious sores on the dog's neck?**
A: This phenomenon is not caused by E-Shock current, but a kind of "pressure necrosis". The reason is that wearing the collar for a long time or even using the receiver collar as a matching collar, causes the receiver probes to compress or wear the skin for a long time, eventually leading to a severe sores. Please follow the wearing time requirements of the instructions and other related warnings.

General Training Tips

Find the Best Stimulation Level for Your Pet

Training Tips

Important: Always start at the lowest level and work your way up.

- This set has 1 tone, 8 vibration levels and 18 Shock levels, which allows you to choose proper level for your pet. Please begin the training with sound and vibrating setting and the shock mode should always be the last to use. And please always start from the lowest level and slowly work your way up until the dog has a response. In most cases, vibration or shock level 1-7 will be adequate for training. Once you wear the collar on your pet, find the "response level", which is the stimulation level that your dog begins to notice and it should not make your pet uncomfortable.
- Follow the steps below to find your pet's response shock level:
NOTE: 1. Please make sure the collar presses snugly on your dog's neck. Both of the prongs must make full contact with the dog's neck to form an electrical circuit. 2.Make sure the collar is fully charged and turned on. 3.Please check the shock mode with the included test light tool to ensure the shock function can work.
 1. Choose level 1 and long press shock button for 2-3 seconds. A slight change in your pet's behavior, such as looking around in curiosity, scratching at his collar, or flicking his ears, indicates this is the proper level for him/her.
 2. If your pet has no reaction, repeat step 1 several times before increasing to higher level.
 3. Increase to level 2 and long press Shock button for 2-3 seconds.
 4. If your pet still has no reaction, repeat several times before moving up to the next level.
 5. Work your way up on the Shock levels until your pet gives response.

General Training Tips

Find the Best Stimulation Level for Your Pet

Training skill

1. Please use the device in a safe and relatively quiet environment to increase training effect and avoid temptation and distraction.
2. Please combine with oral language and gesture during training.
3. Please comfort your pet when he/she is uncomfortable during training.
4. Along with Reward (a treat/a hearty rub/praise) as soon as your baby obey the command, which is helpful for good behavior reinforcement and you will get quick results. It will make your pet connect the collar with good things.
5. The training time should not be too long. Please carefully control the time of static stimulation. If the pet feels uncomfortable(hiding or acting fearfully), you may decrease the level or stop use it.



Certification Statements



This device complies with Part 15 of the FCC Rules. Operation is subject to the following two conditions:
(1) This device may not cause harmful interference, and
(2) This device must accept any interference received, including interference that may cause undesired operation.

Warning: Changes or modifications not expressly approved by the party responsible for compliance could void the user's authority to operate the equipment.
Notes: This equipment has been tested and found to comply with the limits for a Class B digital device, pursuant to Part 15 of the FCC Rules. These limits are designed to provide reasonable protection against harmful interference in a residential installation. This equipment generates uses and can radiate radio frequency energy and, if not installed and used in accordance with the instructions, may cause harmful interference to radio communications. However, there is no guarantee that interference will not occur in a particular installation. If this equipment does cause harmful interference to radio or television reception, which can be determined by turning the equipment off and on, the user is encouraged to try to correct the interference by one or more of the following measures:

- Reorient or relocate the receiving antenna.
- Increase the separation between the equipment and receiver.
- Connect the equipment into an outlet on a circuit different

Certification Statements



from that to which the receiver is connected.
• Consult the dealer or an experienced radio/TV technician for help.



The company declares under its own responsibility that this product complies with the basic requirements of CE (2014/30/EU) and RoHS (2011/65/EU). Without the approval of our company or the distributor, unauthorized changes or modifications to the equipment may violate the CE regulations, may cause the user to lose the right to operate the equipment, and invalidate the warranty.



Recycling Information&Battery Disposal
Please observe the regulations for electronic and electrical devices to be disposed of in the respective country. In some countries or regions this device must be recycled. If this device is no longer required, it must not be disposed of with normal municipal waste. Separate collection of spent batteries is required in many regions; check the regulations in your area before discarding spent batteries. For more recycling information, please refer to local regulations.