

PTM-603 Instruction Manual

Please read the manual carefully before using the product

Basic parameters

Product name: smart water dispenser

Product model: PTM-603

Product color: transparent white

Overall storage size: 176*176*141.8mm

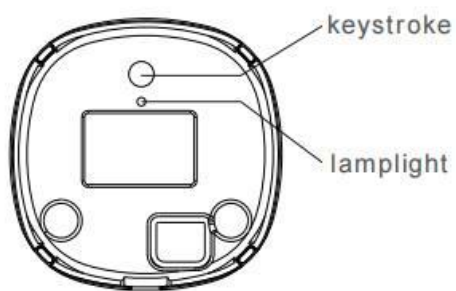
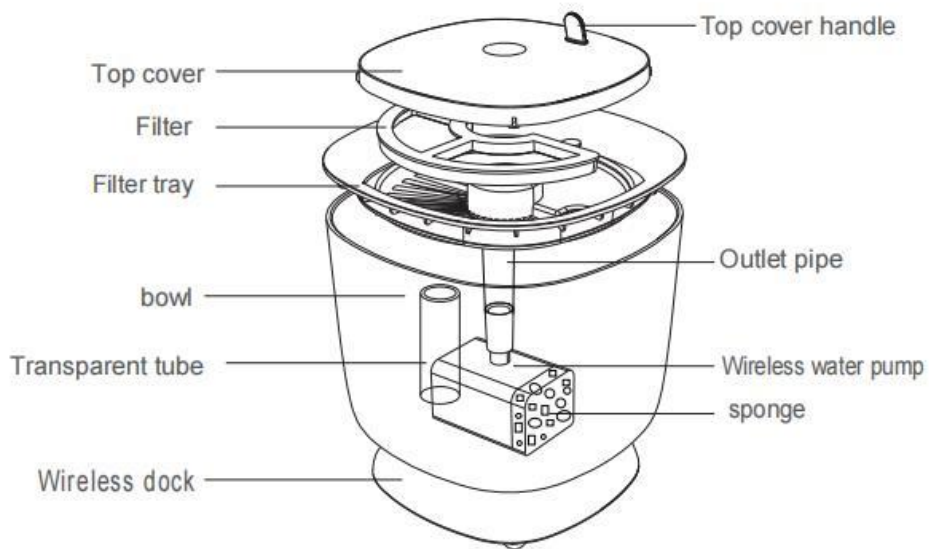
Capacity: 2L

Material: ABS

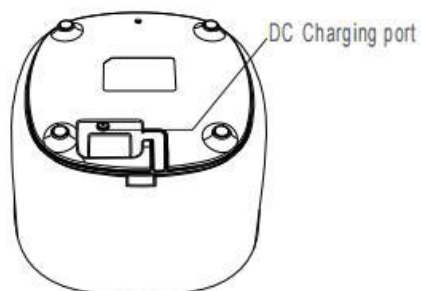
Input:5V/1A

product description

Product introduction



Schematic of the wireless dock panel



Schematic of the base panel

packing list

Water dispenser host * 1

Wireless Water Pump* 1

Filter element* 1

Charging cable* 1

Filter sponge* 1

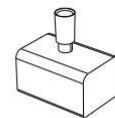
Instruction Manual* 1

Small brush* 1

Packing list



Water dispenser body*1



Wireless pump*1



Filter element*1



Charging cable*1



Filter sponge*1



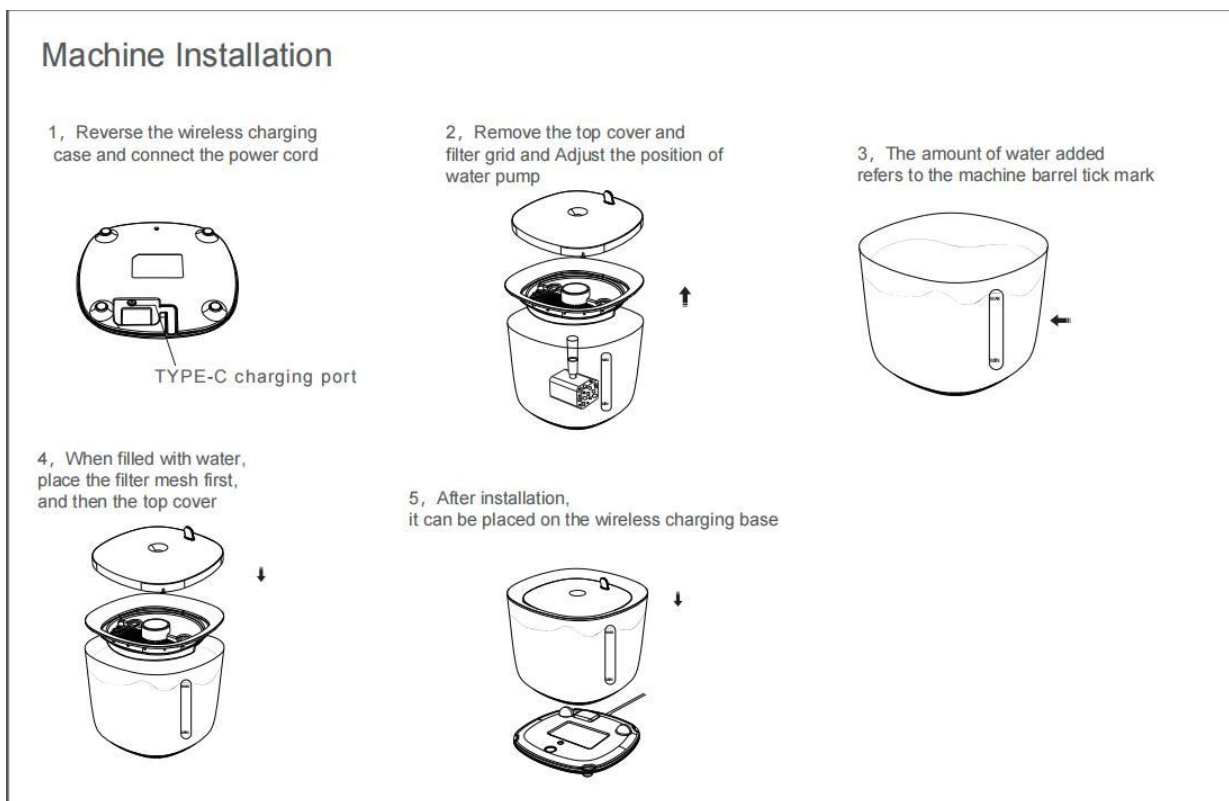
Instructions*1



Small brush *1

Whole machine installation

- 1 , Reverse the wireless charging bottom cover and connect the power cable
- 2 , Remove the top cover and filter grid and adjust the position of the pump
- 3 , The amount of water added refers to the scale line of the machine's large barrel
- 4 , After filling with water, put the filter grid first, then the top cover
- 5 , After installation, it can be placed on the wireless charging base for use



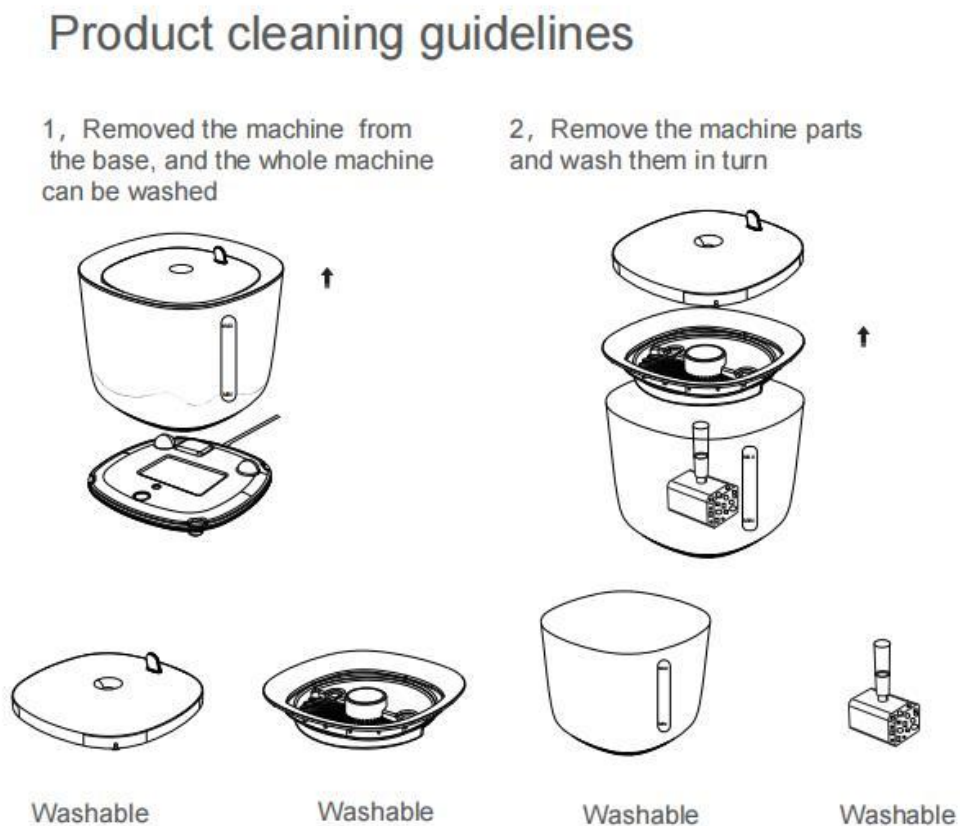
Product usage guidelines

- 1 , Take out the machine, after the whole machine is installed, it can be used after placing the wireless charging base (the default green light of the machine is always on when the power is turned on for the first time and continues to water out mode)
- 2 , The single-machine base button switches the light selection (green light is always on - colorful always - no light) the water outlet mode is still continuous water outlet

- 3 , Double-click the base button to switch the light selection (green light breathing - colorful breathing - no light) the water outlet mode becomes intermittent water outlet (3 minutes on and 3 minutes off)
- 4 , After adjusting the mode, it can be used normally.

Product Cleaning Guidelines

- 1 , The machine is removed from the base, and the whole machine is washable



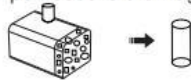
- 2 , Take out the machine parts and wash them in sequence

Pump Cleaning Guidelines

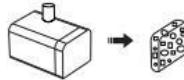
- 1 , Remove the water pump from the water dispenser bucket and pull out the drainage tube
- 2 , Take out the filter sponge
- 3 , Open the water pump filter box along the gap
- 4 , Remove the water pump impeller cover
- 5 , Use a small tool to remove the water pump impeller
- 6 , Carefully clean every part

Pump cleaning Procedure

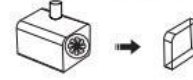
1, Remove the pump from the water dispenser bucket and pull out the drainage tube



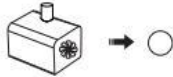
2, Remove the filter sponge



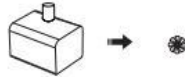
3, Open the water pump filter box through the gap



4, Remove the pump impeller cover



5, Remove the pump impeller with a gadget



6, Clean each area carefully .

safety warning

- 1 , Recommended for pets over 3 months old
- 2 , Do not touch the power supply unit of the device with wet hands.
- 3 , recommended to be used indoors, do not place in humid environments such as outdoor and bathroom, avoid direct sunlight , humidity, and keep away from fire sources .

4 , Please use the original power adapter, otherwise the equipment will be damaged or unable to work. Do not use damaged power cords or plugs.

5 , When unplugging the power supply unit, please hold the adapter with your hand to unplug it, do not drag the power cord. Use a safety low-voltage adapter rated for this equipment.

6 , Do not immerse the wireless charging base in water or any other liquid for use. After the base is wet, please wipe the surface dry before continuing to use it.

7 , 60 ° in the bucket .

8 , To prevent pets from falling over, it is recommended to use against the wall

9 , Children under the age of 8 are not allowed to use this equipment, and children are not allowed to clean and maintain the equipment without adult supervision!

This device is different from toys, and minors must use this device under parental supervision. Be sure to prevent children from playing with the device as a toy.

10 , If the device fails to work properly due to being dropped, bumped, damaged, placed outdoors, or flooded, please stop using it immediately.

11 , Except for maintenance personnel, please do not disassemble and repair the product, otherwise all warranty and service rights will be lost

12 , Please do not place coins, keys and other metal parts in the wireless base transmitting area, it will cause the machine to malfunction.

Device Indicator Description

- 1 , The machine intermittently discharges water (3 minutes off, 3 minutes on): the green light is breathing and flashing
- 2 , The machine continues to water: the green light is always on
- 3 , The machine intermittently discharges water (stop for 3 minutes, open for 3 minutes): the colorful lights are breathing and flashing
- 4 , The machine continuously discharges water: the colorful lights are always on
- 5 , The machine can also turn off the light during intermittent and continuous water discharge.
- 6 , The machine is short of water: the red light flashes
- 7 , The pump is not placed in the position or the position of the pump is shifted: the red light flashes

Machine Troubleshooting Guide

A:red light flashing

- 1 , Check that the pump is properly seated in the groove of the sink
- 2 , Check whether there are foreign objects between the bottom of the pump and the bucket, and whether there are foreign objects between the bucket and the base
- 3 , Check if the amount of water is sufficient, if not, please add water
- 4 , Check if a compliant adapter is used

B : The red light is bad and the green light is always on or the colorful light is always on,

but the water pump is not running

- 1 , Please check whether the pump impeller is blocked, if it is blocked, please clean it
- 2 , Check if the amount of water is sufficient, if not, please add water

C: The indicator light is off, and the water pump is not running

- 1 , Please check if the power supply is connected
- 2 , Please check whether the pump impeller is blocked, if it is blocked, please clean it
- 3 , Check if the amount of water is sufficient, if not, please add water

D: The water volume of the pump is small

- 1 , Please check whether the water outlet of the equipment is installed properly
- 2 , Please check if the sponge is blocked, clean or replace the sponge
- 3 , Check for hair entering the pump, clean the pump impeller

E : The water pump has noise

- 1 , Please check whether the water outlet of the equipment is installed properly
- 2 , Check if the amount of water is sufficient, if not, please add water
- 3 , Check for hair entering the pump, clean the pump impeller

F : The water pump is sometimes out of water and sometimes out of water

- 1 , Check if the amount of water is sufficient, if not, please add water
- 2 , Please check whether to use intermittent water mode, double-click the button to switch to normal mode (continuous water mode)
- 3 , Check whether the pump is correctly placed in the groove of the sink, check whether there is any foreign matter between the bottom of the pump and the bucket, and whether there is any foreign matter between the bucket and the base

G : There is overflow sound

1 , Please check if the filter protection bag is removed

2 , Check if the filter element is blocked by foreign objects, please clean or replace the
filter element

FCC Warning Statement

Changes or modifications not expressly approved by the party responsible for compliance could void the user's authority to operate the equipment. This equipment has been tested and found to comply with the limits for a Class B digital device, pursuant to Part 15 of the FCC Rules. These limits are designed to provide reasonable protection against harmful interference in a residential installation. This equipment generates uses and can radiate radio frequency energy and, if not installed and used in accordance with the instructions, may cause harmful interference to radio communications. However, there is no guarantee that interference will not occur in a particular installation. If this equipment does cause harmful interference to radio or television reception, which can be determined by turning the equipment off and on, the user is encouraged to try to correct the interference by one or more of the following measures:

- Reorient or relocate the receiving antenna.
- Increase the separation between the equipment and receiver.
- Connect the equipment into an outlet on a circuit different from that to which the receiver is connected.
- Consult the dealer or an experienced radio/TV technician for help.