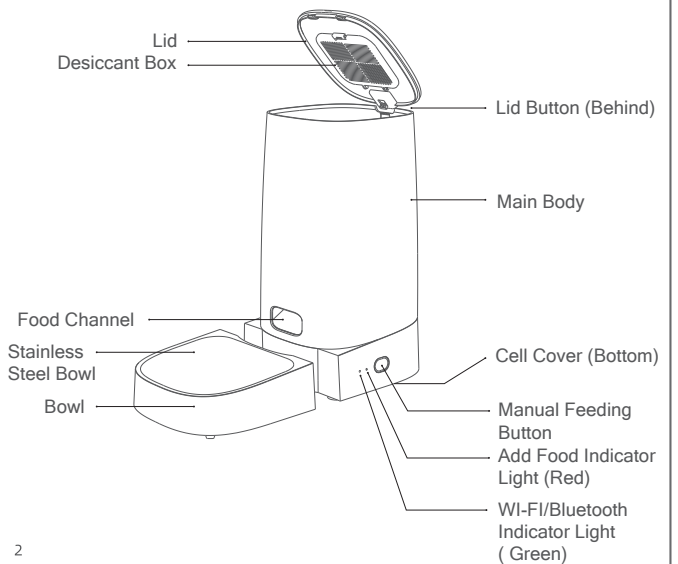


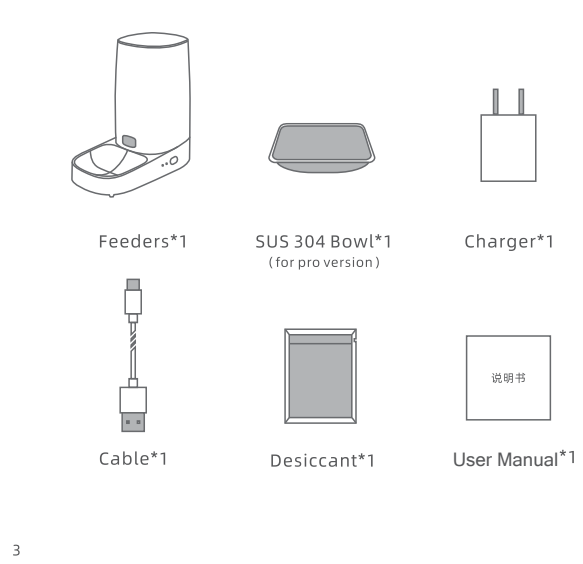
USER MANUAL

Please read carefully before using

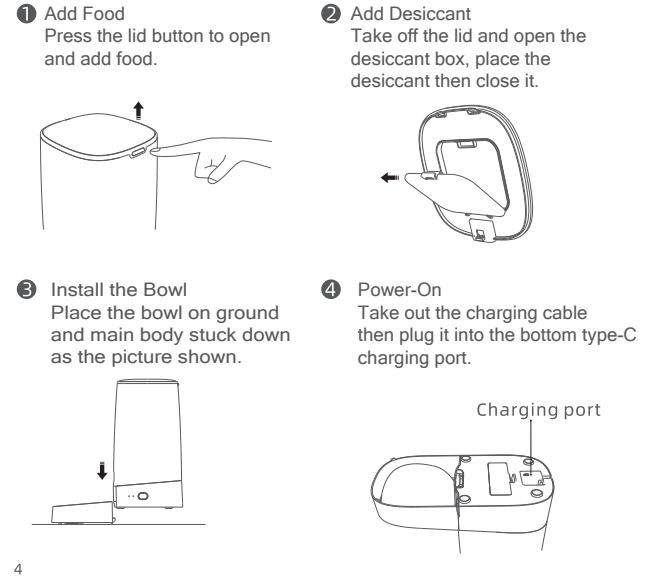
Product introduction



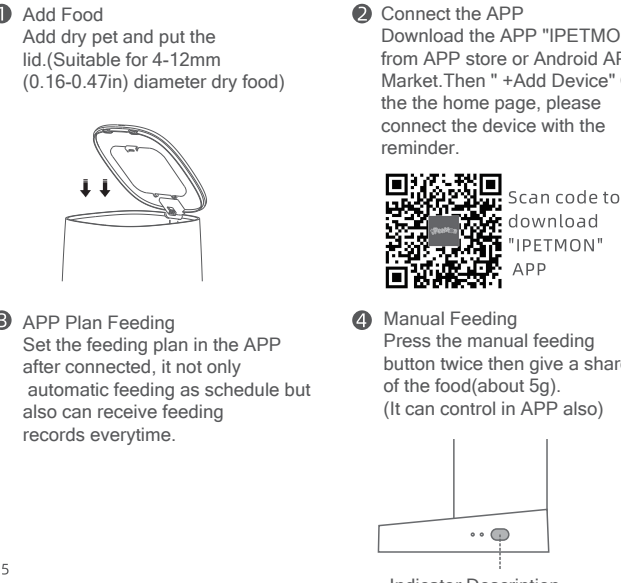
Packing list



Installation instructions



Using the Steps



Indicator Description

Indicator Name	Indicator Status	Equipment State
WIFI/Bluetooth Indicator Light	Green light slow flash	Equipment offline
	Green light quick flash	Connected
	Green Light stays on	Waiting for the connection
Remaining food Indicator Light	Red light quick flash	lack of food
	Both lights flash	Equipment abnormal
	Red light out	Enough food

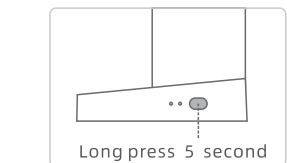
Basic parameters

product name	Automatic Pet Feeder
Model	PTM-001(wifi) PTM-002(bt)
Color	White
Size	335 x 330 x 177MM
Capacity	4L
Weight	1310g
Material	ABS /SUS 304/PC
Input arameters	5V/1A DC
Connection ode	WI-FI / BT

Attention

- 1.It is not recommended for pets less than three months old.
- 2.It is recommended to use the product indoors, keep away from direct sunlight and fire source.
- 3.Use the original power adapter. Otherwise, the device may be damaged or cannot work.
- 4.This product is strictly prohibited to soak in water.
- 5.In order to prevent pets from falling over the product, it is recommended to place it in the corner or against the wall.
- 6.Children e should use under adult guidance.
- 7.Do not soak the desiccant in water. If damaged, do not continue to use it.
- 8.If you move or stop using the product, please unplug the power cord and remove the bottom battery.
- 9.Except for the maintenance personnel, do not disassemble and repair the product to avoid accidental injury.

Hold the feed button for 5 Sec., the wifi/bluetooth indicator flash quickly then reset succeeds.



This device complies with Part 15 of the FCC Rules. Operation is subject to the following two conditions: (1) this device may not cause harmful interference, and (2) this device must accept any interference received, including interference that may cause undesired operation

NOTE: This equipment has been tested and found to comply with the limits for a Class B digital device, pursuant to Part 15 of the FCC Rules. These limits are designed to provide reasonable protection against harmful interference in a residential installation. This equipment generates, uses and can radiate radio frequency energy and, if not installed and used in accordance with the instructions, may cause harmful interference to radio communications. However, there is no guarantee that interference will not occur in a particular installation.

If this equipment does cause harmful interference to radio or television reception, which can be determined by turning the equipment off and on, the user is encouraged to try to correct the interference by one or more of the following measures:

- Reorient or relocate the receiving antenna.
- Increase the separation between the equipment and receiver.
- Connect the equipment into an outlet on a circuit different from that to which the receiver is connected.
- Consult the dealer or an experienced radio/TV technician for help.

Warning: changes or modifications not expressly approved by the party responsible for compliance could void the user's authority to operate the equipment

Radiation Exposure Statement

This equipment complies with FCC radiation exposure limits set forth for an uncontrolled environment.

This equipment should be installed and operated with minimum distance 20cm between the radiator and your body.