

VSBB100 Quick Start Guide

Safety information

⚡ Removing the cover of the set-back box may lead to a severe electric shock.

This set-back box has been manufactured to meet international safety standards. However, safety precautions must be followed to ensure the safe and reliable operation of the device.

Please take note of the following guidelines to avoid the risk of an electric shock:

This device operates with an electrical power supply in the range of 100 to 240V AC, 50/60 Hz. Use a standard AC wall outlet; a DC power source cannot be used. Remember that contact with a 110/240 Volt AC power supply can be lethal.

Ensure that all electrical connections are properly made before connecting the device to the power supply (the mains). Always unplug the device before connecting or disconnecting any cables.

Whenever you connect the device to the power supply (the mains), always connect the power lead to the power input connector on the rear panel of the device before you connect the power socket to the wall outlet.

Whenever you disconnect the device from the power supply (the mains), always remove the power socket from the wall outlet before you remove the other end of the lead from the power input connector on the rear panel of the device.

Batteries shall not be exposed to excessive heat such as sunshine, fire etc.

Be extremely careful if this device is in contact with water. Immediately disconnect the power socket if possible.

This device shall not be exposed to dripping or splashing and no objects filled with liquids shall be placed on the device.

Where the mains plug or an appliance coupler is used as the disconnect device, the disconnect device shall remain readily operable.

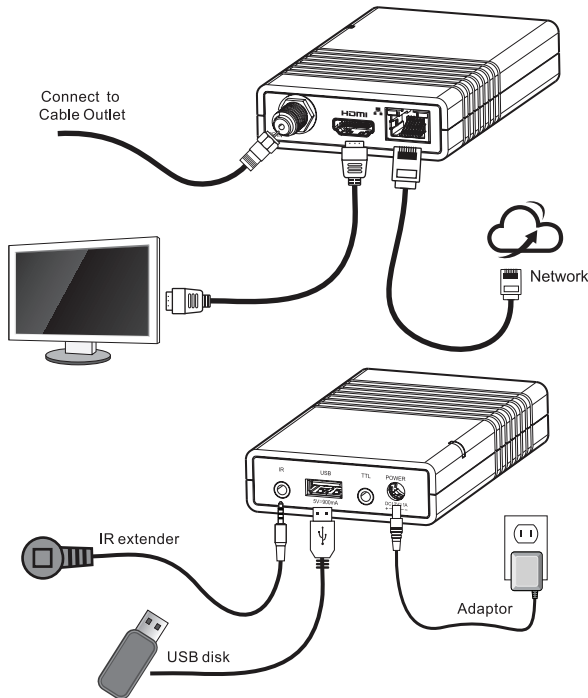
DO:

- ✓ Unplug the device and have it checked by a qualified technician if anything falls into the casing.
- ✓ Allow adequate air circulation to prevent internal heat buildup.

DO NOT:

- ✗ Expose the device to extreme temperatures, direct sun light or high humidity.
- ✗ Place any object on top of the device in order to facilitate air circulation.
- ✗ Place the device on fabric furnishings, carpets or other flammable materialst.
- ✗ Place the device next to a radiator or any heat source and make sure that the air vents are not covered.

Connection



Step 1: Connect the cable to the "RF IN" connector on the side of set-back box using an F-type connector.

Step 2: Connect the VSBB100 set-back box and your TV by using the HDMI cable (supplied with VSBB100).

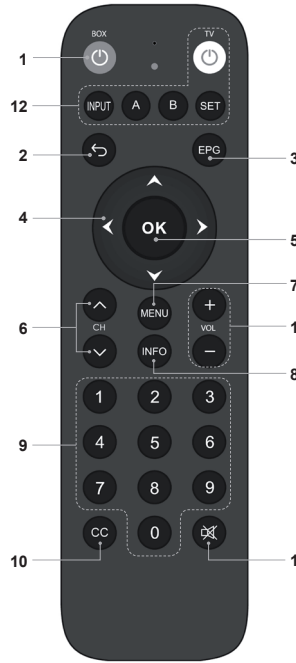
Step 3: Remove the battery cover from the remote control and insert the 2 x AAA batteries provided with the VSBB100 set-back box into the battery compartment.

Step 4: Connect the supplied power adaptor to the "DC IN" on the VSBB100 set-back box and plug the adaptor in the wall socket. Turn your TV ON. You will see the light indicator appeared on the box of VSBB100. TV will display startup screen and first installation menu on the screen.

Step 5: Follow on-screen instructions to set up the set-back box.



Remote control



1. **POWER** – puts SBB into standby mode. To switch off SBB please disconnect the adapter from power supply.
2. **BACK** – returns to the previous channel.
3. **EPG** – displays electronic program guide (EPG).
4. **▲ ▼ ◀ ▶** – navigates up and down, left and right, selects submenus.
5. **OK** – moves to the additional menu of the selected item or confirms selected parameter. Press to display channel list for quick navigation in the program view mode.
6. **CH+ and CH-** – switch between channels.
7. **MENU** – displays main menu or returns one step back in the submenu.
8. **INFO** – displays channel information and allows to see information on the following two programs.
9. **Numeric keys (0...9)** – select channels in the program view mode and input numbers in the menu.
10. **CC** – enables closed captions.
11. **MUTE** – mutes the volume. Press this key again to restore the volume.
12. **Learning buttons for TV** – the function of learning buttons can be defined as you want to control television via the learning function.

Remote Control Learning Function for TV Mode:

1. Press **SET** button on the SBB remote control for 3 seconds until the learning indicator lights up steady red.
2. Press one of the following learning buttons on the SBB remote control: **TV, INPUT, A, B, VOL+, VOL-**. If the red learning indicator starts flashing, the selected button on the remote control is ready to be programmed.
3. Place the SBB remote control and the TV remote control facing each other with a distance of 3-5mm.
4. Long-press the required button on your TV remote control. Once the learning indicator changes from flashing to steady red light, release the TV remote button.
5. If the learning process was successful, the red learning indicator light will flash three time and will then become steady red. You can repeat step 4 to program other TV remote control buttons.
6. Repeat steps 1-5 if the SBB remote control does not learn successfully.
7. After learning is complete, press **SET** button on the SBB remote control. The red light will disappear and the SBB remote control will exit learning mode.

This device complies with Part 15 of the FCC Rules. Operation is subject to the following two conditions:

- (1) this device may not cause harmful interference, and
- (2) this device must accept any interference received, including interference that may cause undesired operation.

Changes or modifications not expressly approved by the party responsible for compliance could void the user's authority to operate the equipment.

NOTE: THE MANUFACTURER IS NOT RESPONSIBLE FOR ANY RADIO OR TV INTERFERENCE CAUSED BY UNAUTHORIZED MODIFICATIONS TO THIS EQUIPMENT. SUCH MODIFICATIONS COULD VOID THE USER'S AUTHORITY TO OPERATE THE EQUIPMENT.

NOTE: This equipment has been tested and found to comply with the limits for a Class B digital device, pursuant to part 15 of the FCC Rules. These limits are designed to provide reasonable protection against harmful interference in a residential installation. This equipment generates, uses and can radiate radio frequency energy and, if not installed and used in accordance with the instructions, may cause harmful interference to radio communications. However, there is no guarantee that interference will not occur in a particular installation. If this equipment does cause harmful interference to radio or television reception, which can be determined by turning the equipment off and on, the user is encouraged to try to correct the interference by one or more of the following measures:

- Reorient or relocate the receiving antenna.
- Increase the separation between the equipment and receiver.
- Connect the equipment into an outlet on a circuit different from that to which the receiver is connected.
- Consult the dealer or an experienced radio/TV technician for help.

This equipment complies with FCC/ISED RF radiation exposure limits set forth for an uncontrolled environment. This device and its antenna must not be co-located or operating in conjunction with any other antenna or transmitter. To comply with FCC/ISED RF exposure compliance requirements, this grant is applicable to only Mobile Configurations. The antennas used for this transmitter must be installed to provide a separation distance of at least 20 cm from all persons and must not be co-located or operating in conjunction with any other antenna or transmitter.

This device contains licence-exempt transmitter(s)/receiver(s) that comply with Innovation, Science and Economic Development Canada's licence-exempt RSS(s). Operation is subject to the following two conditions:

1. This device may not cause interference.
2. This device must accept any interference, including interference that may cause undesired operation of the device.

Le présent appareil est conforme aux CNR d'Industrie Canada applicables aux appareils radio exempts de licence. L'exploitation est autorisée aux deux conditions suivantes :

- (1) l'appareil ne doit pas produire de brouillage, et
- (2) l'utilisateur de l'appareil doit accepter tout brouillage radioélectrique subi, même si le brouillage est susceptible d'en compromettre le fonctionnement.