

## Charge and Discharge

- It is recommended to charge it immediately after purchase. Charge the battery immediately when the remaining power is below 20% to maintain optimum performance and extend service life.
- When charging, the product will be initialized first, and all symbols on the display will light up. After the self-check, it will enter the charging mode, and the display will show "CH" for a long time(charging), "FU" means fully charged.
- Do not charge the product with its output.
- When discharging, the current remaining time of discharge will be displayed, and the remaining time will be automatically adjusted according to the load. After the battery is discharged, the screen will automatically turn off.
- Do not fully discharge the internal battery as it may affect battery life.
- When the warning symbol of high and low temperature protection appears on the display, please stop using it and shut it down immediately.

## AC Output

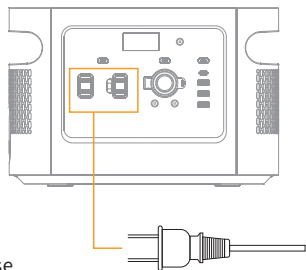
Press and hold the AC power switch to turn on or off the AC power socket

1. Connect the AC powered device to the AC socket (make sure the powered device is turned off before inserting the plug into the AC socket).
2. Press and hold the AC power switch to turn on the AC power outlet, and the display will show AC output.
3. After use, long press the AC power switch, turn off the AC power socket, and unplug the device from the AC power socket.

\* When AC output of the product is not used, please turn off the AC power switch to save energy.

### Notice:

- The AC voltage standards and socket specifications are different in different countries or regions. Please make sure that this product conforms to the specifications of the electrical equipment before use.
- Do not connect other AC power sources to the product's AC outlet.
- Do not put the plug of adapter into the product's AC outlet to charge itself.
- When the AC output is short-circuited or the power of the load appliance exceeds the AC output power, the protection function of the product will be activated. Please remove the short-circuit or remove the electrical equipment, and then restart the machine to restore the AC output function.



## DC Output

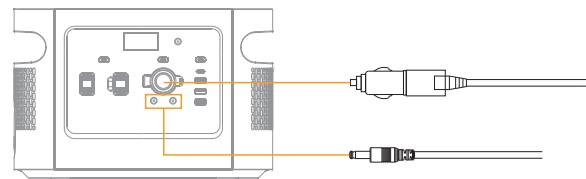
Press the DC switch to turn on or off the DC output

DC output port:

1. Insert the DC plug of the electrical device into the DC output port of this product, then press the DC switch to turn on the DC output, and the display screen will show DC output.
2. After use, press the DC switch to turn off the DC output, and pull the plug of electrical device out of the DC output port.

Car charging port:

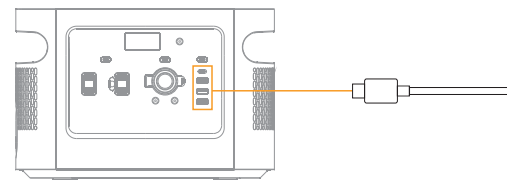
1. Insert the car charger plug into the car charger port, press the DC switch to turn on the DC output, and the display screen will show DC output.
2. After use, press the DC switch to turn off the DC output, and pull the plug of electrical device out of the car charger port.



## USB Output

Press the USB switch to turn on or off the USB output

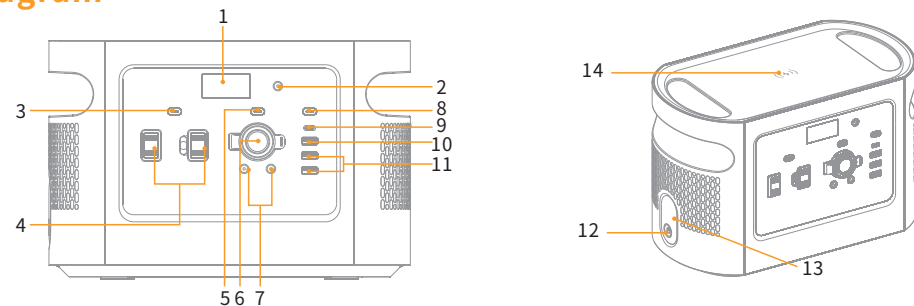
1. Insert the USB cable plug into the USB-A port or USB-C port of the product, then press the USB switch to turn on the USB output, and the display screen will show USB output.
2. After use, press the USB switch to turn off the USB output, and pull the USB cable plug out of the USB-A or USB-C output port.



## Specification

Basic Parameters	Name	Portable Power Station			
	Model No.	QE01A(KR)	QE01B(KR)	QE02A(KR)	QE02B(KR)
	Capacity of Li-ion battery pack	500Wh, 14.8V, 33.8Ah	448Wh, 16V, 28Ah	1065.6Wh, 22.2V, 48Ah	1008Wh, 22.4V, 45Ah
	Size	306×171×202(mm)		413×203×232(mm)	
	Net Weight	≈4.8Kg	≈5.6Kg	≈9.1Kg	≈10.2Kg
Input	DC Charging	12V~30V=3.42A 65W(Max)		12V~30V=7A 182W(Max)	
	USB-C Charging	5V=3.0A/9V=3.0A/12V=3.0A/15V=3.0A/20V=3.25A 65W(Max)			
AC Output*2	Rated Voltage	230V/50Hz(Pure sine wave)			
	Rated Power	Totle 500W(Max)	Totle 600W(Max)	Totle 1000W(Max)	Totle 1200W(Max)
DC Output	USB-A*3	USB-A1:5V=3.0A/9V=2.0A/12V=1.5A 18W(Max), USB-A2 & USB-A3:5V=2.4A 12W(Max)			
	USB-C	5V=3.0A/9V=3.0A/12V=3.0A/15V=3.0A/20V=3.25A 65W(Max)			
	5525*2	12~16.8V=7~10A, Total 120W(Max)	13~18V=7~10A, Total 130W(Max)	13.6V=10A, Total 136W(Max)	
	Car Charger				
LED Light	2W				
Battery Parameters	Cycle Time	800 times	3000 times	800 times	3000 times
	Safety Protection	High temperature protection, low temperature protection, overvoltage protection, undervoltage protection, overload protection, short circuit protection and overcurrent protection			
Operating Environment	Charging Temperature	0°C~40°C			
	Discharging Temperature	-10°C~40°C			

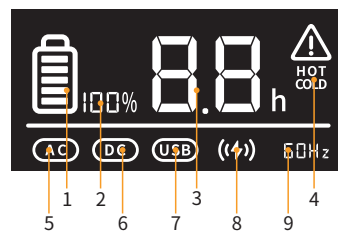
## Product Diagram



\* The AC power socket, AC output voltage and frequency of this product will be changed due to different countries or regions, please refer to the actual product!

- |                      |                     |  |                       |
|----------------------|---------------------|--|-----------------------|
| 1. Display screen    | 5. DC switch        | 9. USB-C                                 | 13. LED lighting      |
| 2. DC charging port  | 6. Car charger port | 10. USB-A 1                              | 14. Wireless charging |
| 3. AC power switch   | 7. DC output port*2 | 11. USB-A 2 & USB-A 3                    |                       |
| 4. AC power socket*2 | 8. USB switch       | 12. LED switch (one button to power off) |                       |

## Display Screen



- |   |                               |
|---|-------------------------------|
| 1. Battery level/Charge status                      | 6. DC output                  |
| 2. Remaining power                                  | 7. USB output                 |
| 3. Discharge remaining time/Charge/Discharge status | 8. Wireless charging output   |
| 4. High and low temperature protection warning      | 9. AC output frequency (60Hz) |
| 5. AC output  |                               |

Note: a. Please turn off the display screen in time if the product is not in use;  
b. Press and hold the LED switch to turn off with one button.

## Specification

	Name	Portable Power Station				
	Model No.	QE01A(JP)	QE01B(JP)	QE02A(JP)	QE02B(JP)	
Basic Parameters	Capacity of Li-ion battery pack	500Wh, 14.8V, 33.8Ah	448Wh, 16V, 28Ah	1065.6Wh, 22.2V, 48Ah	1008Wh, 22.4V, 45Ah	
	Size	306×171×202(mm)		413×203×232(mm)		
	Net Weight	≈4.8Kg	≈5.6Kg	≈9.1Kg	≈10.2Kg	
	Input	DC Charging	12V~30V=3.42A 65W(Max)		12V~30V=7A 182W(Max)	
		USB-C Charging	5V=3.0A/9V=3.0A/12V=3.0A/15V=3.0A/20V=3.25A 65W(Max)			
AC Output*2	Rated Voltage	100V~50/60Hz(Pure sine wave)				
	Rated Power	Totle 500W(Max)	Totle 600W(Max)	Totle 1000W(Max)	Totle 1200W(Max)	
DC Output	USB-A*3	USB-A1:5V=3.0A/9V=2.0A/12V=1.5A 18W(Max), USB-A2 & USB-A3:5V=2.4A 12W(Max)				
	USB-C	5V=3.0A/9V=3.0A/12V=3.0A/15V=3.0A/20V=3.25A 65W(Max)				
	5525*2	12~16.8V=7~10A, Total 120W(Max)	13~18V=7~10A, Total 130W(Max)	13.6V=10A, Total 136W(Max)		
	Car Charger					
	Wireless charging	5V=1.0A/9V=1.0A 10W(Max)				
	LED Light	2W				
Battery Parameters	Cycle Time	800 times	3000 times	800 times	3000 times	
	Safety Protection	High temperature protection, low temperature protection, overvoltage protection, undervoltage protection, overload protection, short circuit protection and overcurrent protection				
Operating Environment	Charging Temperature	0°C~40°C, 32°F~104°F				
	Discharging Temperature	-10°C~40°C, 14°F~104°F				

## Specification

	Name	Portable Power Station				
	Model No.	QE01A(EU)	QE01B(EU)	QE02A(EU)	QE02B(EU)	
Basic Parameters	Capacity of Li-ion battery pack	500Wh, 14.8V, 33.8Ah	448Wh, 16V, 28Ah	1065.6Wh, 22.2V, 48Ah	1008Wh, 22.4V, 45Ah	
	Size	306×171×202(mm)		413×203×232(mm)		
	Net Weight	≈4.8Kg	≈5.6Kg	≈9.1Kg	≈10.2Kg	
	Input	DC Charging	12V~30V=3.42A 65W(Max)		12V~30V=7A 182W(Max)	
		USB-C Charging	5V=3.0A/9V=3.0A/12V=3.0A/15V=3.0A/20V=3.25A 65W(Max)			
AC Output*2	Rated Voltage	230V/50Hz(Pure sine wave)				
	Rated Power	Totle 500W(Max)	Totle 600W(Max)	Totle 1000W(Max)	Totle 1200W(Max)	
DC Output	USB-A*3	USB-A1:5V=3.0A/9V=2.0A/12V=1.5A 18W(Max), USB-A2 & USB-A3:5V=2.4A 12W(Max)				
	USB-C	5V=3.0A/9V=3.0A/12V=3.0A/15V=3.0A/20V=3.25A 65W(Max)				
	5525*2	12~16.8V=7~10A, Total 120W(Max)	13~18V=7~10A, Total 130W(Max)	13.6V=10A, Total 136W(Max)		
	Car Charger					
	Wireless charging	5V=1.0A/9V=1.0A 10W(Max)				
	LED Light	2W				
Battery Parameters	Cycle Time	800 times	3000 times	800 times	3000 times	
	Safety Protection	High temperature protection, low temperature protection, overvoltage protection, undervoltage protection, overload protection, short circuit protection and overcurrent protection				
Operating Environment	Charging Temperature	0°C~40°C				
	Discharging Temperature	-10°C~40°C				

## Disclaimer

Before using the product, please read the instruction manual of this product and make sure to use it correctly after fully understanding it. After reading, please keep the manual properly for future reference. If you do not operate this product correctly, you could cause serious injury to yourself or others, or result in damage to the product and property. Once you start to use this product, you are deemed to have understood, recognized and accepted all the terms and contents of this manual. Users undertake to be responsible for their own actions and all consequences arising therefrom. The manufacturer is not responsible for all losses caused by the user's failure to use the product in accordance with the User Manual.

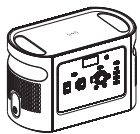
In compliance with relevant laws and regulations, the manufacturer has the final right to interpret this manual and all related documents of this product.

Subject to update, revision or discontinuation without notice.

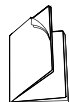
## Product Overview

Thank you very much for using our portable power station product. In the design of this product, a multi-level safety mechanism is adopted, and the product safety and reliability are fully guaranteed. It has multi-port AC output and DC output functions, which can meet the power supply needs of mobile phones, notebook computers, cameras, TV sets, various chargers, game consoles, DVD players, small electrical tools and other equipments, and built-in LED lighting.

## Packing List



Power station



User manual



Adapter

## Specification

Basic Parameters	Name	Portable Power Station			
	Model No.	QE01A(US)	QE01B(US)	QE02A(US)	QE02B(US)
	Capacity of Li-ion battery pack	500Wh, 14.8V, 33.8Ah	448Wh, 16V, 28Ah	1065.6Wh, 22.2V, 48Ah	1008Wh, 22.4V, 45Ah
	Size	306×171×202(mm)		413×203×232(mm)	
	Net Weight	≈4.8Kg	≈5.6Kg	≈9.1Kg	≈10.2Kg
Input	DC Charging	12V~30V=3.42A 65W(Max)		12V~30V=7A 182W(Max)	
	USB-C Charging	5V=3.0A/9V=3.0A/12V=3.0A/15V=3.0A/20V=3.25A 65W(Max)			
AC Output*2	Rated Voltage	110V/60Hz(Pure sine wave)			
	Rated Power	Totle 500W(Max)	Totle 600W(Max)	Totle 1000W(Max)	Totle 1200W(Max)
DC Output	USB-A*3	USB-A1:5V=3.0A/9V=2.0A/12V=1.5A 18W(Max),USB-A2 & USB-A3:5V=2.4A 12W(Max)			
	USB-C	5V=3.0A/9V=3.0A/12V=3.0A/15V=3.0A/20V=3.25A 65W(Max)			
	5525*2	12~16.8V=7~10A, Total 120W(Max)	13~18V=7~10A, Total 130W(Max)	13.6V=10A, Total 136W(Max)	
	Car Charger				
	Wireless charging	5V=1.0A/9V=1.0A 10W(Max)			
	LED Light	2W			
Battery Parameters	Cycle Time	800 times	3000 times	800 times	3000 times
	Safety Protection	High temperature protection, low temperature protection, overvoltage protection, undervoltage protection, overload protection, short circuit protection and overcurrent protection			
Operating Environment	Charging Temperature	0°C~40°C, 32°F~104°F			
	Discharging Temperature	-10°C~40°C, 14°F~104°F			