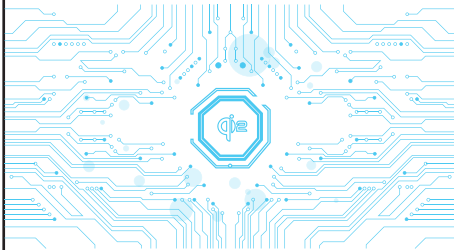


# Instructions Product manual



## ⚡ Power bank function description

- View remaining power  
Click the switch button, the battery digital display on the screen lights up, and the number shows the battery.
- View charging features:  
Click the switch button to turn on the mobile power level digital display display the current battery level, when the input current to shift. When the dynamic power supply is charging, the digital display beats, stops pulsating when fully charged, and displays a green lightning sign indicating that it is in Fast charging state. When it is detected that a device is charging, the digital display digital pulse until the power is exhausted, digital display The number goes out.
- Switching function  
Click the switch button to start the wireless function; Double click the switch to stop working. □

## 📖 Precautions

- \*Please charge the battery at least once every 3 months if it does not be used for a long time. During the use of this device, it will be slightly hot, but it is normal.
- \*Always keep the product dry and do not use chemical agents for cleaning and scrubbing. Please protect our environment, recycle this device at the designated location.
- \*Children or persons who are not equipped to use this device alone must use this device under the supervision of an adult.
- \*Do not bump, disassemble, pierce, crush, or expose this device to moisture.
- \*Do not apply this power bank to devices that do not meet the output parameter requirements, it may cause malfunction or fire.
- \*Please charge this product with a charger approved by the local safety standards in case of danger or damage.

## ? FAQ

- ★When the power bank cannot be charged:
  - Please check whether the power adapter is suitable, the connector used, and whether the converter is normal.
  - It's recommended to choose a suitable power adapter for charging.
- ★When the power bank cannot charge other devices:
  - The power bank is too low, please charge it before using it.
  - If the internal circuit of the power bank is faulty, please contact the after-sales service department of the local dealer for help.



Strong magnetic



Smart chip



Safety protection



Digital Display

Made In China



## 🔍 User guide

- Can be used as a magnetic wireless mobile power supply, compatible with Apple 12 and above series mobile phones.
- It can be used as a universal wireless charging mobile power supply, compatible with mobile phones that support Qi2 wireless charging protocol.
- It can be used as a portable and compact mobile power supply, supporting more than 99% of mobile phone charging.
- Can be used as a wireless charge, put on the desktop, with the charge.
- It can be used as a mobile phone stand, put horizontally and vertically for free vision.

## 📄 Packaging List

- Mobile power\*1
- Manual\*1
- Type-C charging cable\*1

## ⚙️ Product Performance

- 15W wireless output, magnetic wireless fast charging
- 35W fast charge
- It can be charged and discharged at the same time, and the mobile phone and power bank can be quickly charged at the same time
- Battery display, showing the power level
- High-quality polymer batteries, safe and worry-free

## ⚠️ Warning



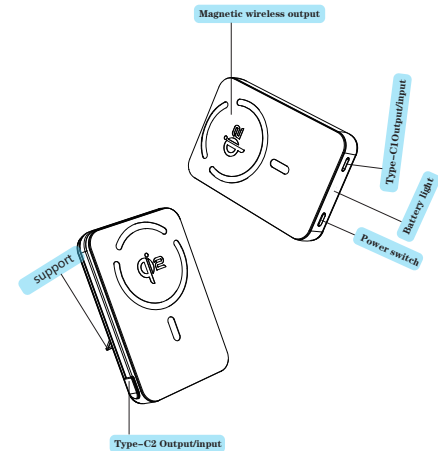
Prohibited from disassembling, impacting, squeezing, or putting in fire. If severe swelling occurs, do not continue use. Do not place in high-temperature environment. Prohibited from use after immersion in water.

## Remarks: Description of wireless charging functions

- \*Place the phone on the wireless charger, click the switch button to turn on the wireless charging function.
- \*When using the charger to charge the mobile power supply and using the wireless charging function to charge the device at the same time, only the ordinary 5W wireless Line charging function.
- \*During the charging process of the mobile power supply, in a fully charged state, since the charging protocol is switched to the 5V input state, it is turned on at this time. In wireless charging mode, only ordinary 5W charging can be performed. When you stop charging the power bank, it will restart automatically, and Wireless charging can enter fast charging mode.
- \*When using PD12V charger to charge the power bank, because this function does not support 12V power supply, wireless charging The function will be turned off.

## ☰ Specifications

Product name	power bank
Product model	M02A
Cell type	Lithium polymer cell
Type-C 1/2 port output	5V=3A/9V=3A/12V=2.92A 15V=2.33A/20V=1.75A (Max)
Type-C 1/2 port input	5V=3A/9V=3A/12V=2.5A 15V=2A/20V=1.5A (Max)
Wireless output	Qi2 15W (Max)
Product size	M02A:106.9*71*19.6±0.10mm
Product weight	M02A:About 238g
Executive standard	GB 4943.1-2022; GB 31241-2022



This device complies with part 15 of the FCC Rules. Operation is subject to the following two conditions: (1) This device may not cause harmful interference, and (2) this device must accept any interference received, including interference that may cause undesired operation.

Any Changes or modifications not expressly approved by the party responsible for compliance could void the user's authority to operate the equipment.

**Note:** This equipment has been tested and found to comply with the limits for a Class B digital device, pursuant to part 15 of the FCC Rules. These limits are designed to provide reasonable protection against harmful interference in a residential installation. This equipment generates uses and can radiate radio frequency energy and, if not installed and used in accordance with the instructions, may cause harmful interference to radio communications. However, there is no guarantee that interference will not occur in a particular installation. If this equipment does cause harmful interference to radio or television reception, which can be determined by turning the equipment off and on, the user is encouraged to try to correct the interference by one or more of the following measures:

- Reorient or relocate the receiving antenna.
- Increase the separation between the equipment and receiver.
- Connect the equipment into an outlet on a circuit different from that to which the receiver is connected.
- Consult the dealer or an experienced radio/TV technician for help.

FCC Radiation Exposure statement

The device has been evaluatec to meel general RF exposure requirement. The device can be used in porlable exposure condition without restriction.