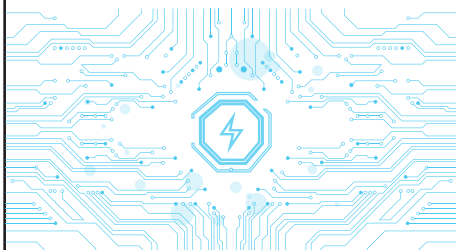


# Instructions

## Product manual



### ⚡ Power bank function description

1. Check the remaining battery  
Click the switch button, the digital display of the power in the screen is on, and the number corresponds to the displayed power.
2. Check the charging function:  
Click the switch button to turn on the mobile power digital display to display the current battery power. When the input current is used to charge the mobile power, the digital display will jump, and it will stop beating when fully charged, and a green lightning symbol will be displayed to indicate that it is in a fast charging state. When it is detected that a device is being charged, the digital display will jump until the power is exhausted and the digital display will turn off.
3. Switch function  
Click the switch button, the wireless function starts working; double-click the switch, stop working.
4. Stand use  
There are grooves on both sides of the OPEN word on the back of the product. When using it, drag the magnetic bracket above to make it at the upper end. Drag to the bottom side of the triangle to use the stand.

### 📖 Precautions

- \*Please charge the battery at least once every 3 months if it will not be used for a long time. During the use of this device, it will be slightly hot, but it is normal that it is not hot.
- \*Always keep the product dry and do not use chemical agents for cleaning and scrubbing. Please take care of the environment, recycle this device at the designated location, and do not dispose of it arbitrarily.
- \*Children or persons who are not equipped to use this device alone must use this device under the supervision of an adult.
- \*Do not bump, disassemble, pierce, crush, or expose this device to moisture.
- \*Do not apply this power bank to devices that do not meet the output parameter requirements, it may cause malfunction or fire.

### ❓ FAQ

- \*When the power bank cannot be charged:
- Please check whether the power adapter is suitable, the connector used, and whether the converter is normal.
- It is recommended to choose a suitable brand of power adapter for charging.
- \*When the power bank cannot charge other devices:
- The power bank is too low, please charge it before using it.
- If the internal circuit of the power bank is faulty, please contact the after-sales service department of the local dealer for help.



Made In China



### 📖 User guide

1. Can be used as a magnetic wireless power bank, compatible with Apple 12/13 series mobile phones.
2. Can be used as a universal wireless charging power bank, compatible with all mobile phones that support the Qi wireless charging protocol. Support wireless charging mobile phones such as OPPO, HUAWEI, Xiaomi, SAMSUNG.
3. Can be used as a portable and compact mobile power supply, supporting more than 99% of mobile phone charging.
4. It can be used as a wireless charger, put it on the desktop, and charge it whenever you put it.
5. Can be used as a mobile phone stand, Horizontal and vertical placement, free vision.

### 📦 Packaging List

- Power bank\*1
- Instruction manual \*1
- Charging cable\*1

### ⚙️ Product Performance

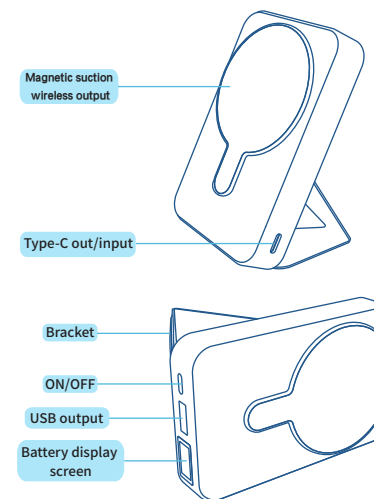
- 15W wireless output, magnetic wireless fast charging
- PD+QC2.2.5W fast charge
- It can be charged and discharged at the same time, and the mobile phone and power bank can be quickly charged at the same time
- LED digital display power screen, accurate display of power
- High-quality polymer batteries, safe and worry-free

### 📝 Remarks: Description of wireless charging functions

- \*Place the phone on the wireless charger, click the switch button to turn on the wireless charging function.
- \*When using the charger to charge the mobile power supply and using the wireless charging function to charge the device at the same time, only the ordinary 5W wirelessLine charging function.
- \*During the charging process of the mobile power supply, in a fully charged state, since the charging protocol is switched to the 5V input state, it is turned on at this time. In wireless charging mode, only ordinary 5W charging can be performed. When you stop charging the power bank, it will restart automatically, and Wireless charging can enter fast charging mode.
- \*When using PD12V charger to charge the power bank, because this function does not support 12V power supply, wireless charging feature will be turned off.

### 📋 Specifications

Name	Magnetic wireless power bank E43B
Product model	E43B
Type of cell	Lithium polymer battery
Type-C output	DC5V=3A/9V=2.22A/12V=1.5A
Type-C input	DC4.5V=5A/5V=4.5A/5V=3A
USB output	9V=2A/12V=1.5A
Wireless output	5W/7.5W/10W/15W
Product Size	105*66.5*20.2±0.1mm
Executive standard	GB/T35590-2017
Operating temperature	-10°C-40°C



宽120mm 高110mm

#### FCC Statement

This device complies with part 15 of the FCC Rules. Operation is Subject To the following two conditions:

(1) This device may not cause harmful interference, and (2) this device must accept any interference received, including interference that may cause undesired operation. Changes or modifications not explicitly approved by the party responsible for compliance could void the user's authority to operate this equipment.

Note: this equipment has been tested and found to comply with the limits for a Class B digital device, pursuant to part 15 of the FCC Rules. These limits are designed to provide reasonable protection against harmful interference in a residential installation. This equipment generates, uses and candidate radio frequency energy and, if not installed and used in accordance with the instructions, may cause harmful interference to radio communications. However, there is no guarantee that interference will not occur in a particular installation. If this equipment does cause harmful interference to radio or television reception, which can be determined by turning the equipment off and on, the user is encouraged to try to correct the interference by one or more of the following measures:

- Reorient or relocate the receiving antenna.
- Increase the separation between the equipment and receiver.
- Connect the equipment into an outlet on a circuit different from that to which the receiver is connected.
- Consult the dealer or an experienced radio/TV technician for help.

The equipment complies with FCC radiation exposure limits set forth for an uncontrolled environment. During the operation of device a distance of 0 cm surrounding the device and 0 cm above the top surface of the device must be respected.

- Increase the separation between the equipment and any other radio device.
- Connect the equipment into an outlet on a circuit different from that to which the receiver is connected.