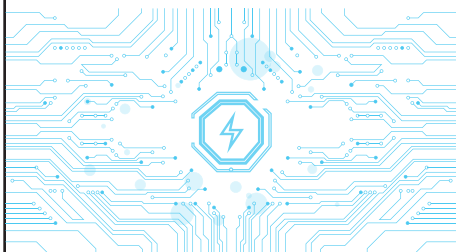


# Instructions



## ⚡ Power bank function description

1. Check remaining battery power  
Click the switch button, the digital display of the power in the screen will light up, and the number will display the power.
2. Check the charging function  
Click the switch button to turn on the digital display of the mobile power supply to display the current battery level. When the input current is used to charge the mobile power supply, the digital display will jump, and it will stop beating when fully charged. A green lightning symbol is displayed to indicate that it is in a fast charging state. When it is detected that a device is being charged, the digital display will jump until the battery is exhausted and the digital display will turn off.
3. Switch function  
Click the switch button, the wireless function starts working; double-click the switch, stop working.

## 📖 Matters needing attention

- \*Please charge the battery at least once every 3 months if it is not used for a long time.
- \*During the use of this device, it will be slightly hot, but it is normal that it is not hot.
- \*Please keep the product dry at all times, do not use chemical reagents for cleaning and scrubbing.
- \*Please take care of the environment, recycle this device at the designated location, and do not dispose of it at will.
- \*Children or people who do not have the ability to use this device alone must use this device under the supervision of an adult.
- \*Do not bump, disassemble, pierce, squeeze, or expose this device to moisture.
- \*Do not apply this power bank to devices that do not meet the output parameter requirements, it may cause malfunction or fire.

## ❓ FAQ

- \* It is recommended to choose a suitable brand of power adapter for charging.
- \*When the power bank cannot charge other devices:  
The power bank's power is too low, please charge it before using.  
If the internal circuit of the power bank is faulty, please contact the after-sales service department of the local dealer for help.

Made in China



## 👤 User guide

1. It can be used as a magnetic wireless mobile power supply, compatible with Apple 12/13 series mobile phones.
2. It can be used as a universal wireless charging power bank and is compatible with all mobile phones that support the Qi wireless charging protocol. Support wireless charging mobile phones such as OP, HW, XM, SAM.
3. It can be used as a portable and compact power bank, supporting more than 99% of mobile phone charging.
4. Can be used as a wireless charger, put it on the desktop, and charge it whenever you place it.

## 📄 Packaging List

- Power bank\*1
- Manual\*1
- Charging cable\*1

## ⚙️ Product performance

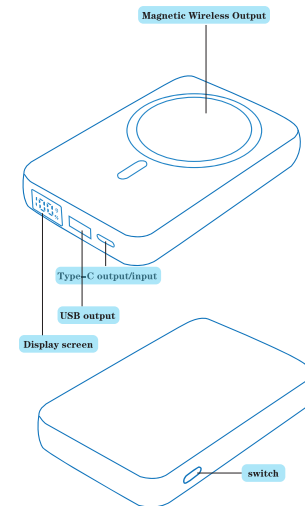
- 15W wireless output, magnetic wireless fast charging
- PD+QC2.5W fast charging
- It can be charged and discharged at the same time, and the mobile phone and power bank can be quickly charged at the same time
- LED digital display power screen, accurate display of power
- High-quality polymer batteries, safe and worry-free

### Remarks: Description of wireless charging functions

- \*Place the phone on the wireless charger, click the switch button to turn on the wireless charging function.
- \*When using the charger to charge the mobile power supply and using the wireless charging function to charge the device at the same time, only the ordinary 5W wireless charging function is available at this time.
- \*During the charging process of the mobile power supply, in a fully charged state, since the charging protocol is switched to the 5V input state, the wireless charging mode is turned on at this time, and only ordinary 5W charging can be performed. When you stop charging the power bank, it will restart automatically, and the wireless charging can enter the fast charging mode.
- \*When using PD12V charger to charge the power bank, because this function does not support 12V power supply, the wireless charging function will be turned off.

## 📋 Specification parameters

Product Name	Lithium polymer battery
Battery type	DC5V=3A/9V=2.25A/12V=1.5A
Type-c port output	DC5V=3A/9V=2.25A/12V=1.5A
Type-c port input	DC4.5V=5A/5V=4.5A/5V=3A
USB output	9V=2.25A/12V=1.5A
wireless output	5W/7.5W/10W/15W
Executive standard	GB/T35590-2017
Operating temperature	-10°C-40°C



宽120mm 高110mm

This device complies with part 15 of the FCC Rules. Operation is subject to the following two conditions: (1) This device may not cause harmful interference, and (2) this device must accept any interference received, including interference that may cause undesired operation.

Any Changes or modifications not expressly approved by the party responsible for compliance could void the user's authority to operate the equipment.

**Note:** This equipment has been tested and found to comply with the limits for a Class B digital device, pursuant to part 15 of the FCC Rules. These limits are designed to provide reasonable protection against harmful interference in a residential installation. This equipment generates uses and can radiate radio frequency energy and, if not installed and used in accordance with the instructions, may cause harmful interference to radio communications. However, there is no guarantee that interference will not occur in a particular installation. If this equipment does cause harmful interference to radio or television reception, which can be determined by turning the equipment off and on, the user is encouraged to try to correct the interference by one or more of the following measures:

- Reorient or relocate the receiving antenna.
- Increase the separation between the equipment and receiver.
- Connect the equipment into an outlet on a circuit different from that to which the receiver is connected.
- Consult the dealer or an experienced radio/TV technician for help.

This equipment complies with FCC radiation exposure limits set forth for an uncontrolled environment. This equipment should be installed and operated with minimum distance 0cm between the radiator & your body.